

m o o o i

## Zio Footstool

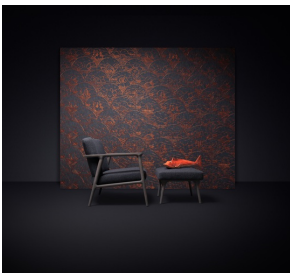
MARCEL WANDERS STUDIO



Providing the ultimate grace to your limbs, the Zio footstool by Marcel Wanders brings a touch of style along with its heavenly comfort. Feel free to kick off your shoes and rest your legs while reading the newspaper. It will be your silent aide on a lazy Sunday morning..

---

### *Detailing*

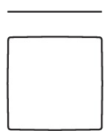


The Zio Footstool unites the strong, yet light look of natural stained oak with the beauty of organic shapes, finished off with straight modern cuts.

# Zio Footstool

## Dimensions

56cm | 22"



56cm | 22"



40cm | 15.7"



40cm | 15.7"

## Product

**WIDTH** 56cm | 22"

**HEIGHT** 40cm | 15.7"

**DEPTH** 56cm | 22"

**WEIGHT NETTO** 6.2kg | 13.67lbs

## Packaging

**WIDTH** 60cm | 23.6"

**HEIGHT** 43cm | 16.9"

**CUBAGE** 0.15m<sup>3</sup> | 5.47ft<sup>3</sup>

**LENGTH** 60cm | 23.6"

**WEIGHT** 7.7kg | 16.98lbs

## Technical

### ADDITIONAL

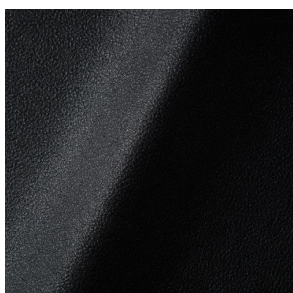
Frame available in different stain colours.

### MATERIAL

Solid oak frame, CMHR foam.

## Upholstery

*ABBRACCI* (available in 5 colours)



### COMPOSITION

100% PES

### ABRASION

30000 martindale  
lightfastness 3 - 4  
pilling 5

### FIRE RESISTANCE

BS 5852 - Ignition source  
0 (Cigarette)  
BS 5852 - Ignition source  
1 (Match flame equivalent)  
EN 1021-1 (Cigarette)  
EN 1021-2 (Match)  
TB 117-2013

*CANVAS 2 (available in 45 colours)*



**COMPOSITION**

90% WO, 10% PA

**ABRASION**

100000 martindale  
lightfastness 6  
pilling 4

**FIRE RESISTANCE**

BS 5852 - Ignition source  
1 (Match flame equivalent)  
BS 5852 - Ignition source  
0 (Cigarette)  
TB 117-2013  
EU Ecolabel

---

*DENIM (available in 3 colours)*



**COMPOSITION**

100% CO

**ABRASION**

70000 martindale  
lightfastness 4  
pilling 3 - 4

**FIRE RESISTANCE**

BS5852 part 1 on request  
US. Cal. Bull. 117-2013

---

*DIVINA 3 (available in 56 colours)*



**COMPOSITION**

100% WO

**ABRASION**

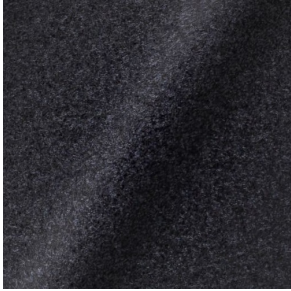
45000 martindale  
lightfastness 7  
pilling 3

**FIRE RESISTANCE**

BS 5852 - Ignition source  
0 (Cigarette)  
BS 5852 - Ignition source  
5 (Crib 5)  
BS 5852 - Ignition source  
1 (Match flame equivalent)  
EN 1021-1 (Cigarette)  
EN 1021-2 (Match)  
TB 117-2013  
EU Ecolabel

---

*DIVINA MD (available in 27 colours)*



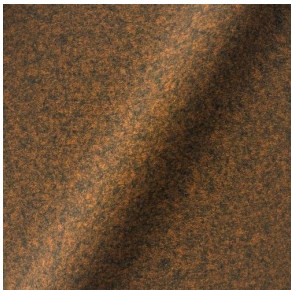
**COMPOSITION**  
100% WO

**ABRASION**  
45000 martindale  
lightfastness 6  
pilling 3

**FIRE RESISTANCE**  
BS 5852 - Ignition source  
0 (Cigarette)  
BS 5852 - Ignition source  
5 (Crib 5)  
BS 5852 - Ignition source  
1 (Match flame equivalent)  
EN 1021-1 (Cigarette)  
EN 1021-2 (Match)  
EU Ecolabel

---

*DIVINA MELANGE 3 (available in 60 colours)*



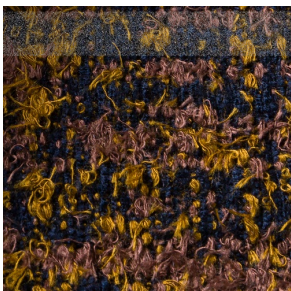
**COMPOSITION**  
100% WO

**ABRASION**  
45000 martindale  
lightfastness 6 - 7  
pilling 3

**FIRE RESISTANCE**  
BS 5852 - Ignition source  
0 (Cigarette)  
BS 5852 - Ignition source  
5 (Crib 5)  
BS 5852 - Ignition source  
1 (Match flame equivalent)  
EN 1021-1 (Cigarette)  
EN 1021-2 (Match)  
TB 117-2013  
EU Ecolabel

---

*Bearded Leopard (available in 3 colours)*



**COMPOSITION**  
77% CV, 15% PES, 7% CO,  
1% PA

**ABRASION**  
15000 martindale  
lightfastness 4 - 6  
pilling 4

**FIRE RESISTANCE**  
BS5852 part 1 on request  
US. Cal. Bull. 117-2013

*Bison (available in 1 colours)*



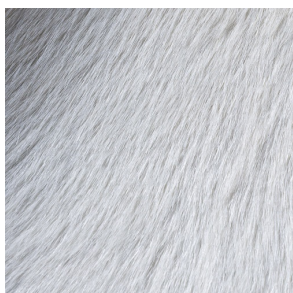
---

*Armoured Boar, Crackle (available in 1 colours)*



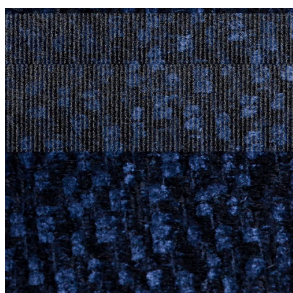
---

*Armoured Boar, Hairy (available in 1 colours)*



---

*Calligraphy Bird (available in 4 colours)*



**COMPOSITION**

64% CV, 21% PES, 15%  
CO

**ABRASION**

50000 martindale  
lightfastness 4 - 6  
pilling 5

**FIRE RESISTANCE**

BS5852 part 1 on request  
US. Cal. Bull. 117-2013

*Dodo Pavone (available in 3 colours)*



**COMPOSITION**  
12% CO, 88% PES

**ABRASION**  
40000 martindale  
lightfastness 5  
pilling 4 - 5

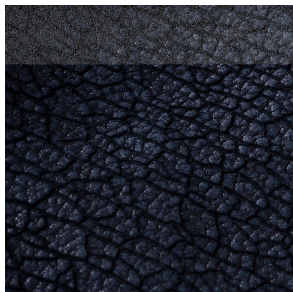
**FIRE RESISTANCE**  
BS5852 part 1 on request  
US. Cal. Bull. 117-2013

---

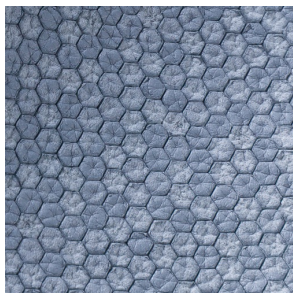
*Dwarf Rhino Buffed (available in 1 colours)*



*Dwarf Rhino, Crackle (available in 1 colours)*



*Flying Coral Fish (available in 1 colours)*





*Menagerie of Extinct Animals (available in 2 colours)*



**COMPOSITION**  
100% PES

**ABRASION**  
50000 martindale  
lightfastness 4 - 6  
pilling 5

**FIRE RESISTANCE**  
BS5852 part 1 on request  
US. Cal. Bull. 117-2013

---

*Rendezvous Tokyo Blue (available in 1 colours)*



**COMPOSITION**  
100% PES

**ABRASION**  
50000 martindale  
lightfastness 4 - 6  
pilling 5

**FIRE RESISTANCE**  
BS5852 part 1 on request  
US. Cal. Bull. 117-2013

---

*Blushing Sloth Melange Mohair (available in 1 colours)*



**COMPOSITION**  
85% WV, 15% WM

**ABRASION**  
15000 martindale  
lightfastness 4 - 6  
pilling 2 - 3

**FIRE RESISTANCE**  
BS5852 part 1 on request  
US. Cal. Bull. 117-2013

---

*Blushing Sloth Woolly Mohair (available in 1 colours)*



**COMPOSITION**  
24% PES, 15% PA, 8% CO,  
24% WM, 29% WV

**ABRASION**  
40000 martindale  
lightfastness 4 - 6  
pilling 3 - 4

**FIRE RESISTANCE**  
BS5852 part 1 on request  
US. Cal. Bull. 117-2013

---

*FIORD (available in 27 colours)*



**COMPOSITION**

92% WV, 8% PA

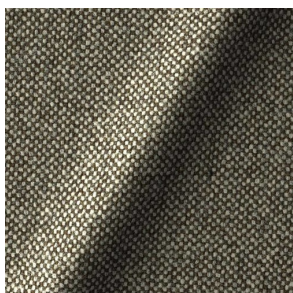
**ABRASION**

60000 martindale  
lightfastness 6  
pilling 4 - 5

**FIRE RESISTANCE**

EN 1021-1 (Cigarette)  
EN 1021-2 (Match)  
BS 5852 - Ignition source  
0 (Cigarette)  
BS 5852 - Ignition source  
1 (Match flame equivalent)

*HALLINGDAL 65 (available in 58 colours)*



**COMPOSITION**

30% CV, 70% WV

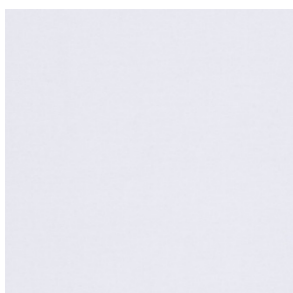
**ABRASION**

100000 martindale  
lightfastness 7  
pilling 3 - 4

**FIRE RESISTANCE**

BS 5852 - Ignition source  
0 (Cigarette)  
BS 5852 - Ignition source  
5 (Crib 5)  
BS 5852 - Ignition source  
1 (Match flame equivalent)  
EN 1021-1 (Cigarette)  
EN 1021-2 (Match)  
TB 117-2013  
EU Ecolabel

*HARALD 3 (available in 30 colours)*



**COMPOSITION**

100% CO

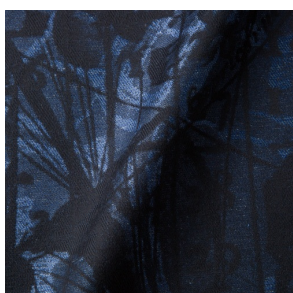
**ABRASION**

100000 martindale  
lightfastness 5  
pilling 4 - 5

**FIRE RESISTANCE**

EN 1021-1 (Cigarette)

*JACQUARD, ANDAZ (available in 1 colours)*



**COMPOSITION**

34% CO, 30% CV, 24%  
LI, 12% PA

**ABRASION**

25000 martindale  
lightfastness 4 - 6  
pilling 4 - 5

**FIRE RESISTANCE**

BS 5852 - Ignition source  
0 (Cigarette)  
BS 5852 - Ignition source  
1 (Match flame equivalent)  
EN 1021-1 (Cigarette)  
EN 1021-2 (Match)



---

*JACQUARD, FRESC (available in 1 colours)*



**COMPOSITION**

52% CV, 38% CO, 10% LI

**ABRASION**

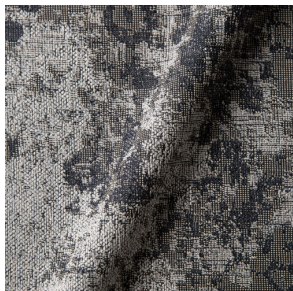
15000 martindale  
lightfastness 3 - 4  
pilling 2 - 3

**FIRE RESISTANCE**

BS 5852 - Ignition source  
0 (Cigarette)  
EN 1021-1 (Cigarette)  
EN 1021-2 (Match)

---

*JACQUARD, OLD (available in 2 colours)*



**COMPOSITION**

52% CV, 38% CO, 10% LI

**ABRASION**

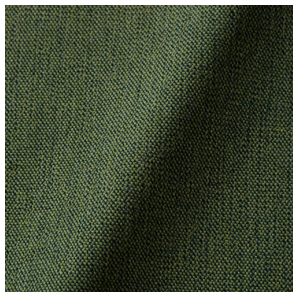
15000 martindale  
lightfastness 3 - 4  
pilling 2 - 3

**FIRE RESISTANCE**

BS 5852 - Ignition source  
0 (Cigarette)  
EN 1021-1 (Cigarette)  
EN 1021-2 (Match)

---

*JUSTO (available in 10 colours)*



**COMPOSITION**

15% CO, 35% PC, 10% PA,  
40% CV

**ABRASION**

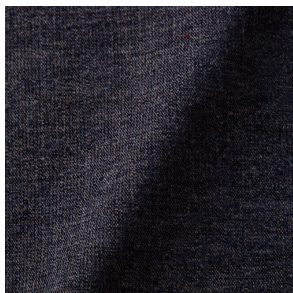
50000 martindale  
lightfastness 5  
pilling 4

**FIRE RESISTANCE**

EN 1021-1 (Cigarette)  
EN 1021-2 (Match)  
TB 117-2013

---

*LISCIO (available in 11 colours)*



**COMPOSITION**

35% WO, 35% CV, 21%  
CO, 9% PA

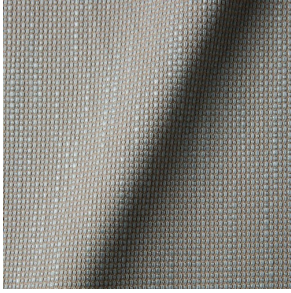
**ABRASION**

30000 martindale  
lightfastness 4 - 6  
pilling 4

**FIRE RESISTANCE**

TB 117-2013

*MACCHEDIL GREZZO (available in 10 colours)*



**COMPOSITION**

47% CO, 20% CV, 18%  
PA, 8% LI, 5% PC

**ABRASION**

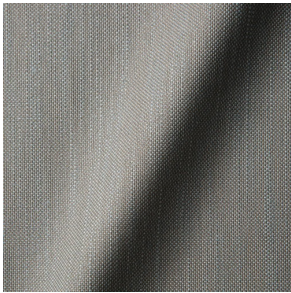
15000 martindale  
lightfastness 3 - 5  
pilling 4 - 5

**FIRE RESISTANCE**

BS5852 part 1 on request

---

*MACCHEDIL SOTTILE (available in 10 colours)*



**COMPOSITION**

49% CV, 24% PES, 21% LI,  
6% CO

**ABRASION**

20000 martindale  
lightfastness 3 - 5  
pilling 2 - 3

**FIRE RESISTANCE**

BS5852 part 1 on request

---

*MANGA (available in 4 colours)*



**COMPOSITION**

29% PES, 71% CO

**ABRASION**

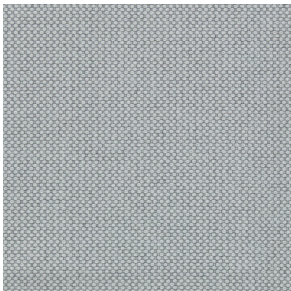
40000 martindale  
lightfastness 4 - 5

**FIRE RESISTANCE**

BS 5852 - Ignition source  
0 (Cigarette)  
BS 5852 - Ignition source  
1 (Match flame equivalent)

---

*MERIT (available in 43 colours)*



**COMPOSITION**

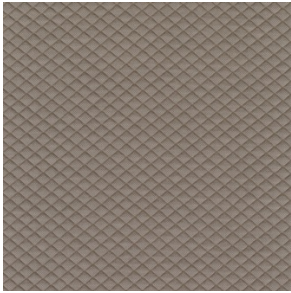
24% PES, 76%

**ABRASION**

85000 martindale  
lightfastness 7  
pilling 4

---

*MOSAIC 2 (available in 15 colours)*



**COMPOSITION**

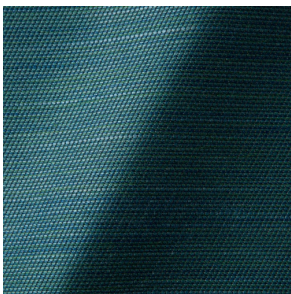
58% PES, 27% WV, 9% PA,  
6% EA

**ABRASION**

100000 martindale  
lightfastness 6 - 7  
pilling 4 - 5

---

*ORAY RAY (available in 15 colours)*



**COMPOSITION**

39% LI, 38% CV, 15% PE,  
8% CO

**ABRASION**

30000 martindale  
pilling 4 - 5

**FIRE RESISTANCE**

BS 5852 - Ignition source  
0 (Cigarette)  
BS 5852 - Ignition source  
1 (Match flame equivalent)  
TB 117-2013

---

*ORAY RONAN (available in 5 colours)*



**COMPOSITION**

39% LI, 38% CV, 15% PE,  
8% CO

**ABRASION**

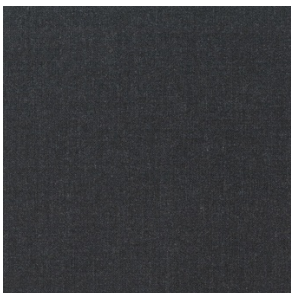
30000 martindale  
pilling 4 - 5

**FIRE RESISTANCE**

BS 5852 - Ignition source  
0 (Cigarette)  
BS 5852 - Ignition source  
1 (Match flame equivalent)  
TB 117-2013

---

*REMIX 3 (available in 53 colours)*



**COMPOSITION**

10% PA, 90% WV

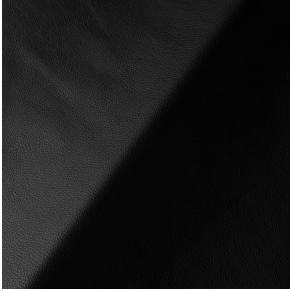
**ABRASION**

100000 martindale  
lightfastness 5  
pilling 4

**FIRE RESISTANCE**

BS5852 part 1  
US. Cal. Bull. 117-2013

*SAVANNE (available in 3 colours)*

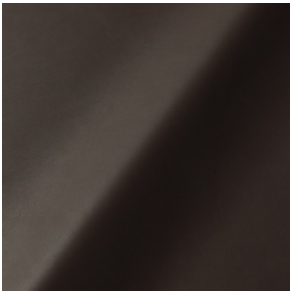


**FIRE RESISTANCE**

EN 1021-1 (Cigarette)  
EN 1021-2 (Match)  
TB 117-2013  
OEKO-TEX

---

*SHADE (available in 6 colours)*



**ABRASION**

lightfastness 3 - 4

**FIRE RESISTANCE**

EN 1021-1 (Cigarette)  
EN 1021-2 (Match)  
TB 117-2013

---

*SOLIS (available in 9 colours)*



**COMPOSITION**

60% WO, 30% PES, 2%  
PA, 3% PC

**ABRASION**

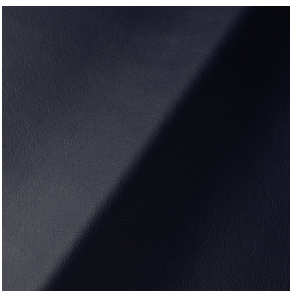
40000 martindale  
lightfastness 5  
pilling 3 - 4

**FIRE RESISTANCE**

EN 1021-1 (Cigarette)  
EN 1021-2 (Match)  
TB 117-2013

---

*SPECTRUM (available in 11 colours)*



**ABRASION**

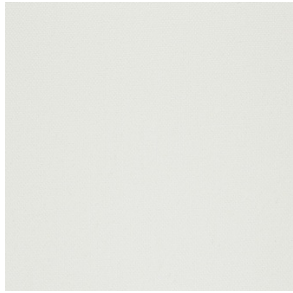
lightfastness 6 - 6

**FIRE RESISTANCE**

EN 1021-1 (Cigarette)  
EN 1021-2 (Match)  
TB 117-2013  
OEKO-TEX



*STEELCUT 2 (available in 37 colours)*



**COMPOSITION**

90% WV, 10% PA

**ABRASION**

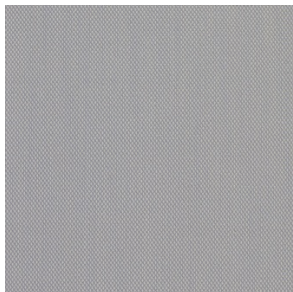
100000 martindale  
lightfastness 6  
pilling 3 - 4

**FIRE RESISTANCE**

BS 5852 - Ignition source  
0 (Cigarette)  
BS 5852 - Ignition source  
1 (Match flame equivalent)  
EN 1021-1 (Cigarette)  
EN 1021-2 (Match)  
TB 117-2013  
EU Ecolabel

---

*STEELCUT TRIO 3 (available in 54 colours)*



**COMPOSITION**

90% WV, 10% PA

**ABRASION**

100000 martindale  
lightfastness 5  
pilling 4

**FIRE RESISTANCE**

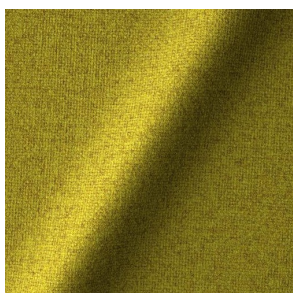
BS 5852 - Ignition source  
0 (Cigarette)  
BS 5852 - Ignition source  
1 (Match flame equivalent)  
EN 1021-1 (Cigarette)  
EN 1021-2 (Match)  
EU Ecolabel

---

*TARTANIC (available in 0 colours)*

---

*TONICA 2 (available in 39 colours)*



**COMPOSITION**

100% WV

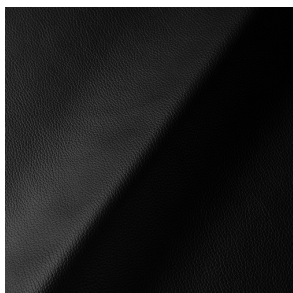
**ABRASION**

45000 martindale  
lightfastness 6 - 7  
pilling 4 - 5

**FIRE RESISTANCE**

EN 1021-1 (Cigarette)  
EN 1021-2 (Match)

*ULTRA (available in 6 colours)*



**ABRASION**

lightfastness 6 - 7

**FIRE RESISTANCE**

EN 1021-1 (Cigarette)  
EN 1021-2 (Match)  
TB 117-2013  
ANSI/BIFMA M7.1 (Total  
Volatile Organic  
Compounds)

---

*VESPER (available in 8 colours)*



**COMPOSITION**

10% CO, 40% LI, 10% PA,  
10% PES, 30% CV

**ABRASION**

40000 martindale  
lightfastness 5  
pilling 4

**FIRE RESISTANCE**

EN 1021-1 (Cigarette)  
EN 1021-2 (Match)  
TB 117-2013

---