

DATASHEET

Type: **WHISTLE**
Name: Pendant light
ID: US961
Designed by: Lucie Koldová



Download

Description

The Whistle collection is, quite literally, a living reference to the work of glassmakers, as inspiration for the design was taken from the blowpipe, which in Czech is known as a glassmaker's whistle. The lucid body of the piece traces the silhouette of a cone of light, and a distinct spotlight with hand-pressed metal shield constitutes its imaginary heart.

Tech. description

The light consists of a glass body, a steel wire and a power cable. The bottom contains a metal reflector with a GX53 light source socket. The fixture includes a metal ceiling canopy.

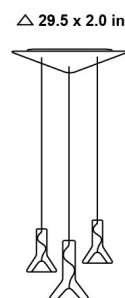


Colours options: https://brokis.sharepoint.com/:b:/s/brokis_sp/EQBvJ52xM8dPsOxu4BcnVHsBaJuMn1HMID7svf7_LffwRw

CONSTRUCTION SPECIFICATION

Weight: 43 lb
Construction material: glass, metal
Cord length [in]: 78.74 "
Mounting: Ceiling
Environment: Dry

DIMENSIONS [in]



ELECTRICAL SPECIFICATION

Input voltage [V]: 120 V
Frequency [Hz]: 60 Hz
Max. power [W]: 3 x 10 W LED
Coverage IP: 20
Socket: 3 x GX53
Light source: -

CERTIFICATIONS



BROKIS S.R.O.
ŠPANILOVA 1315/25
163 00 PRAHA 6 - ŘEPY
CZECH REPUBLIC

ORG ID 64940799
VAT ID CZ64940799
C 42174 MĚSTSKÝ SOUD
V PRAZE

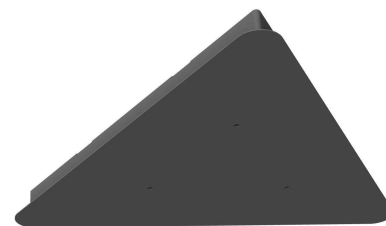
TEL +420 567 211 517
TECHNICAL@BROKIS.CZ
INFO@BROKIS.CZ
WWW.BROKIS.CZ

2023_01
PAGE 1

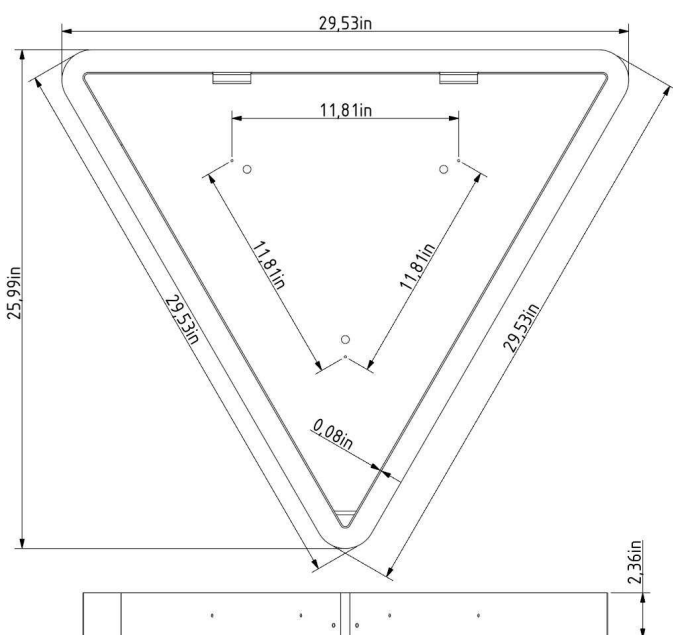


INNER FIXTURE

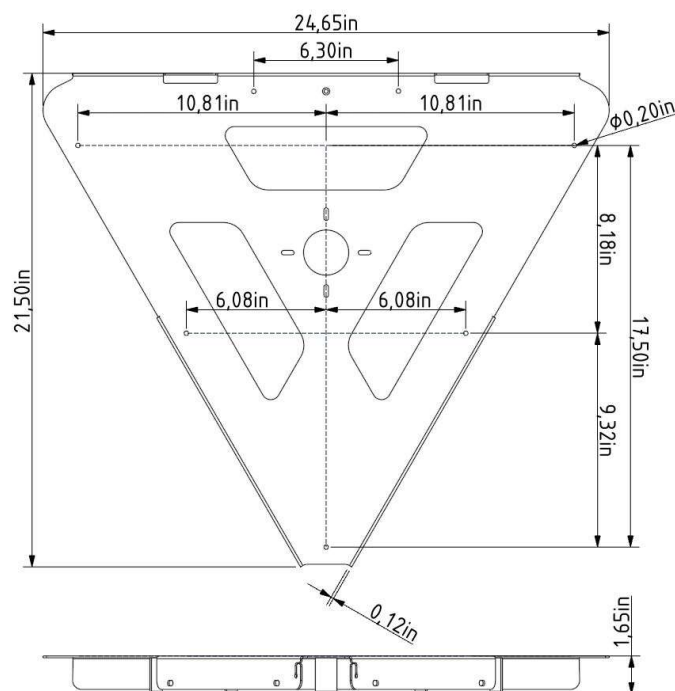
Dimensions l x w x h [in]	29.53 x 25.99 x 2.36
Weight [lb]	21 lb
Material	metal



Drawing



Hole placement



DATASHEET

Type: **WHISTLE**
Name: Pendant light
ID: US952
Designed by: Lucie Koldová



Download

Description

The Whistle collection is, quite literally, a living reference to the work of glassmakers, as inspiration for the design was taken from the blowpipe, which in Czech is known as a glassmaker's whistle. The lucid body of the piece traces the silhouette of a cone of light, and a distinct spotlight with hand-pressed metal shield constitutes its imaginary heart.



Tech. description

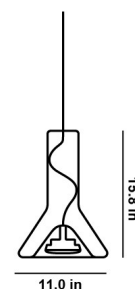
The light consists of a glass body, a steel wire and a power cable. The bottom contains a metal reflector with a GX53 light source socket. The fixture includes a metal ceiling canopy.

Colours options: https://brokis.sharepoint.com/:b/s/brokis_sp/EewBBXJs7w5Pv6XJ61aP2SABDKSKhbdCoWkk_mIFG_yrAQ

CONSTRUCTION SPECIFICATION

Weight: 7.9 lb
Construction material: glass, metal
Cord length [in]: 78.74 "
Mounting: Ceiling
Environment: Dry

DIMENSIONS [in]



ELECTRICAL SPECIFICATION

Input voltage [V]: 120 V
Frequency [Hz]: 60 Hz
Max. power [W]: 10 W LED
Coverage IP: 20
Socket: GX53
Light source: -

CERTIFICATIONS



BROKIS S.R.O.
ŠPANILOVA 1315/25
163 00 PRAHA 6 - ŘEPY
CZECH REPUBLIC

ORG ID 64940799
VAT ID CZ64940799
C 42174 MĚSTSKÝ SOUD
V PRAZE

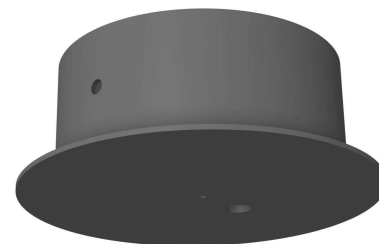
TEL +420 567 211 517
TECHNICAL@BROKIS.CZ
INFO@BROKIS.CZ
WWW.BROKIS.CZ

2023_01
PAGE 1

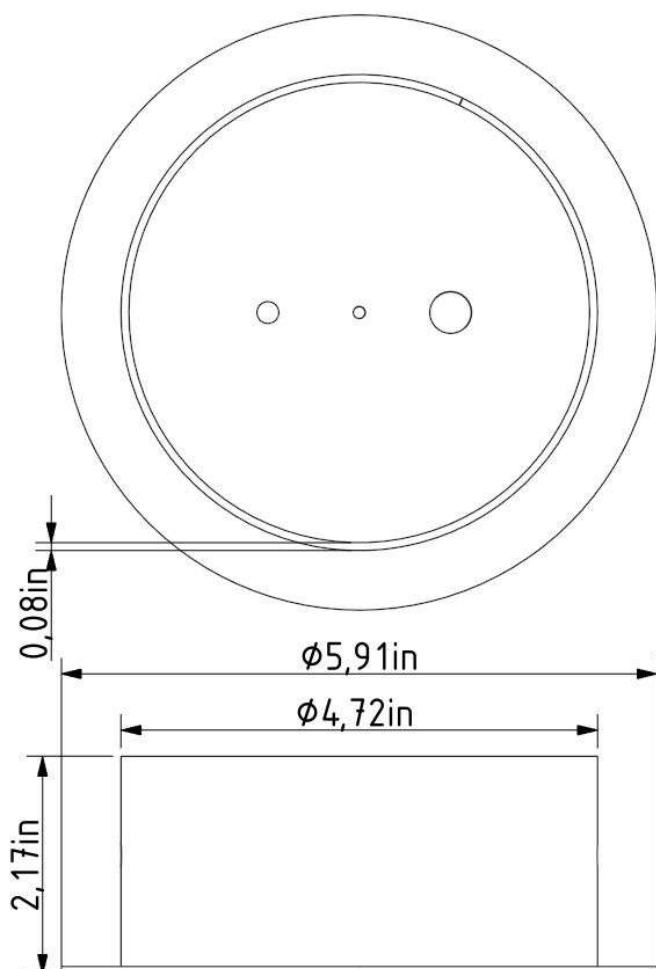


INNER FIXTURE

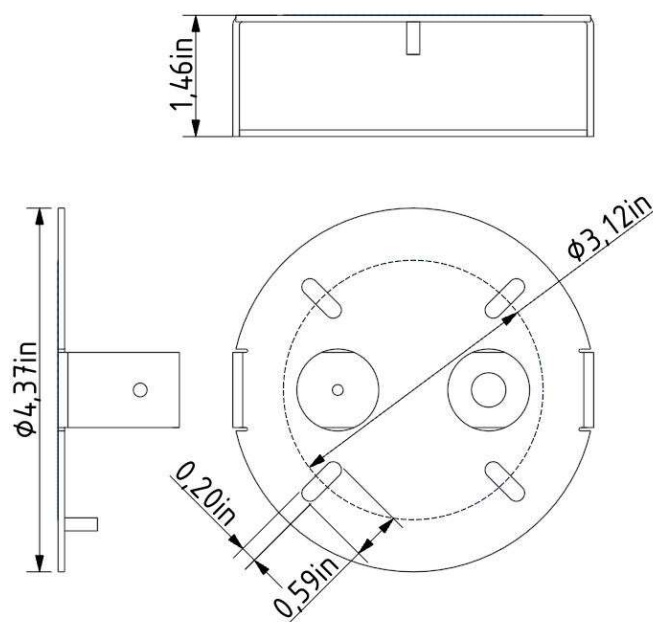
Dimensions O x w [in] 5.9 x 2.17
Weight [lb] 2 lb
Material metal



Drawing



Hole placement



DATASHEET

Type: **WHISTLE**
Name: Pendant light
ID: US953
Designed by: Lucie Koldová



Download

Description

The Whistle collection is, quite literally, a living reference to the work of glassmakers, as inspiration for the design was taken from the blowpipe, which in Czech is known as a glassmaker's whistle. The lucid body of the piece traces the silhouette of a cone of light, and a distinct spotlight with hand-pressed metal shield constitutes its imaginary heart.



Tech. description

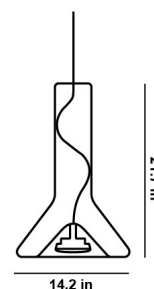
The light consists of a glass body, a steel wire and a power cable. The bottom contains a metal reflector with a GX53 light source socket. The fixture includes a metal ceiling canopy.

Colours options: https://brokis.sharepoint.com/:b:/s/brokis_sp/EaQcR1QhOh9BvadNnVjgNaEBOhf5E5csxGJMhEowFZkP5g

CONSTRUCTION SPECIFICATION

Weight: 12 lb
Construction material: glass, metal
Cord length [in]: 78.74 "
Mounting: Ceiling
Environment: Dry

DIMENSIONS [in]



ELECTRICAL SPECIFICATION

Input voltage [V]: 120 V
Frequency [Hz]: 60 Hz
Max. power [W]: 10 W LED
Coverage IP: 20
Socket: GX53
Light source: -

CERTIFICATIONS



BROKIS S.R.O.
ŠPANILOVA 1315/25
163 00 PRAHA 6 - ŘEPY
CZECH REPUBLIC

ORG ID 64940799
VAT ID CZ64940799
C 42174 MĚSTSKÝ SOUD
V PRAZE

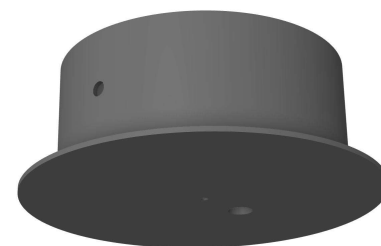
TEL +420 567 211 517
TECHNICAL@BROKIS.CZ
INFO@BROKIS.CZ
WWW.BROKIS.CZ

2023_01
PAGE 1

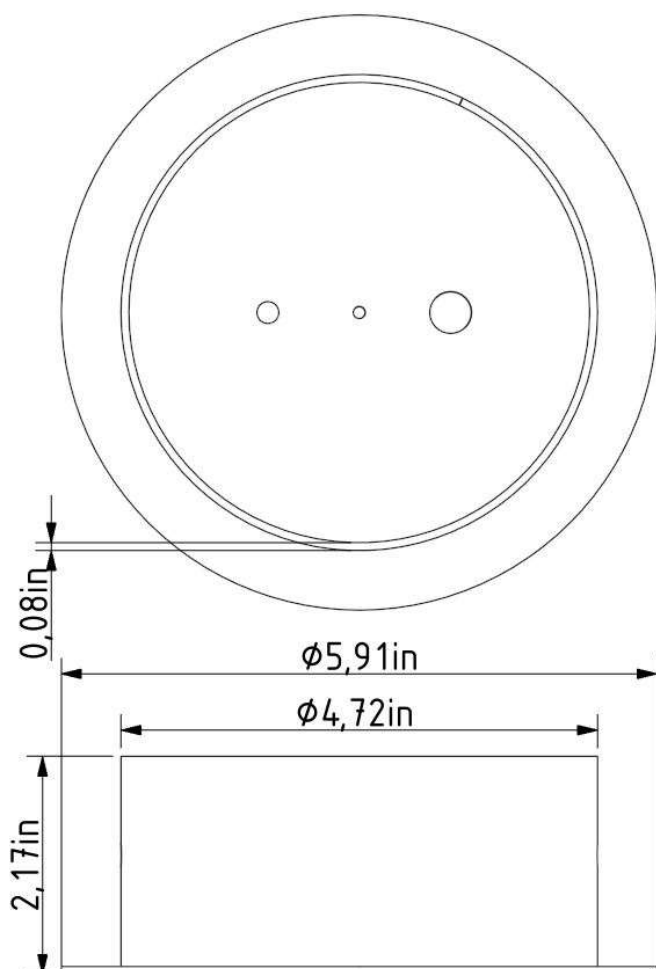


INNER FIXTURE

Dimensions O x w [in] 5.9 x 2.17
Weight [lb] 2 lb
Material metal



Drawing



Hole placement

