

MAD CHAIR

MARCEL WANDERS STUDIO (2014)



DESCRIPTION

Marcel Wanders's Mad Chair has an harmonic structure creating strong suggestions: the ideal of a design without any material boundaries of great impact.

Poliform

MAD CHAIR

MARCEL WANDERS STUDIO (2014)



TECHNICAL DESCRIPTION

TYOLOGY

armchair

STRUCTURE

flexible moulded polyurethane

PRE-COVER

polyester padding

COVER

stretched, removable in fabric and not removable in leather

LEGS

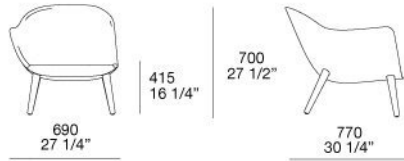
solid wood - painted metal

Poliform

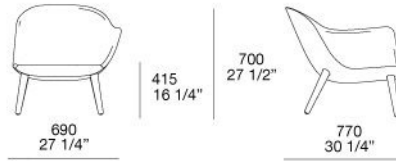
MAD CHAIR

MARCEL WANDERS STUDIO (2014)

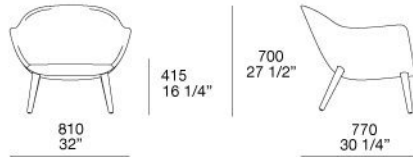
MAPL690X



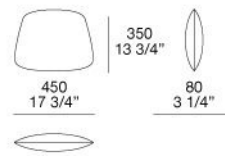
MAPL690Z



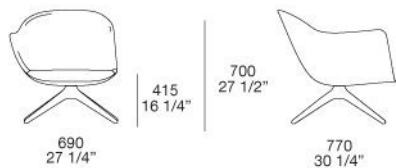
MAPL770N



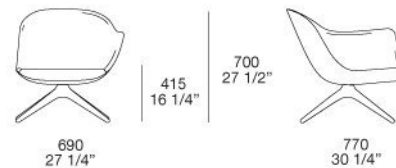
MAPR



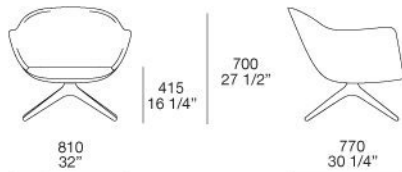
MAPN690X



MAPN690Z



MAPN810



Poliform

MAD CHAIR

FINISHINGS\LEGS\WOODS (2)



SPESSART
OAK

BLACK ELM

MAD CHAIR

FINISHINGS\SWIVEL BASE\ BROWN NICKEL MAT PAINTED (1)



BROWN
NICKEL MAT
PAINTED

MAD CHAIR

FINISHINGS\SWIVEL BASE\GLOSSY PAINTEDBROWN NICKEL (1)



GLOSSY
PAINTEDBRO
WN NICKEL

MAD CHAIR

FINISHINGS\COVER\FABRIC (38)



KUSHIRO

SENDAI

NAYORO

KITAMI

CHIOS

ARGO

CORINTO

ITACA



MILOS

OLIMPIA

ZANTE

SPARTA

ORLEANS

OXFORD

PERSIA

RABAT



HANNOVER

CORDOBA

CALEDONIA

ASPEN

ATLANTA

LIMA

SIVIGLIA

INDRA



LIPSI

CALEO

SKYROS

NAXOS

ERACLEA

ANTEA

MICENE

ARCADIA



LERO

SIRO

AGADIR

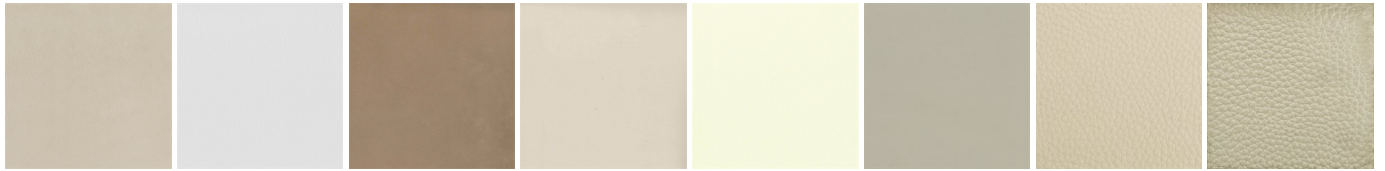
BREST

GLASGOW

NANCY

MAD CHAIR

FINISHINGS\COVER\LEATHER (8)



NABUK
LEATHER

PELLE
SPECIAL

AGED-
LOOKING
LEATHER

COLORS
LEATHER

SPRING
LEATHER

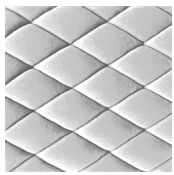
SOFT
LEATHER

LEATHER
SILK

DEEP

MAD CHAIR

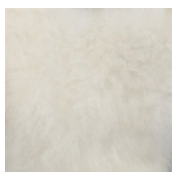
FINISHINGS\COVER\GIBSON (1)



GIBSON

MAD CHAIR

FINISHINGS\COVER\CASHMERE LEATHER (1)



CASHMERE