
Sophie Sofa

Federica Biasi
2019



Sophie Sofa

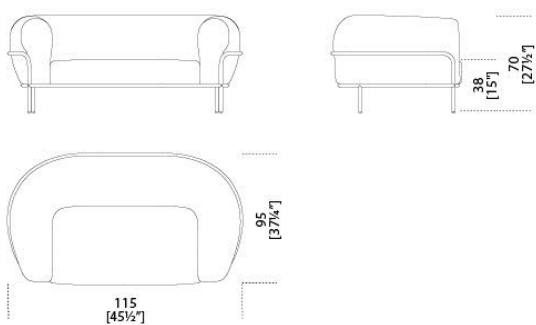
Federica Biagi, 2019

Divanetto con imbottitura in poliuretano espanso. Rivestimento in tessuto o pelle nei colori del campionario. Struttura in metallo laccato ottone satinato oppure grigio antracite.

Small sofa with foam polyurethane padding. Cover in fabric or leather, available as per samples. Metal structure in Satin brass or anthracite grey lacquered metal structure.

Dimensioni / Sizes
Cm (W x D x H)
170 x 95 x 70

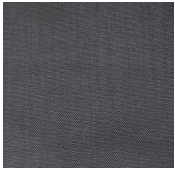
Inches (W x D x H)
67" x 37½" x 27¾"



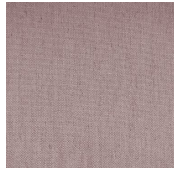
Sophie Sofa

Finiture / Finishes

Tessuto Cat.A / Fabric Cat.A



*Tiffany
anthracite 013
Tiffany
anthracite 013*



*Tiffany ash
pink 004
Tiffany ash
pink 004*



*Tiffany brick
007
Tiffany brick
007*



*Tiffany clay
003
Tiffany clay
003*



*Tiffany ochre
008
Tiffany ochre
008*



*Tiffany
peacock 014
Tiffany
peacock 014*

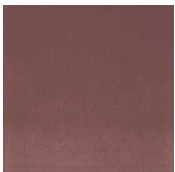


*Tiffany sand
011
Tiffany sand
011*



*Tiffany white
001
Tiffany white
001*

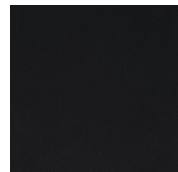
Velluto Cat.A / Velvet Cat.A



*Velvet ash pink
2703
Velvet ash pink
2703*



*Velvet blue 408
Velvet blue 408*



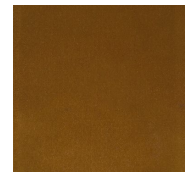
*Velvet ink
black 800
Velvet ink
black 800*



*Velvet mink
518
Velvet mink
518*



*Velvet moss
7307
Velvet moss
7307*



*Velvet ochre
1688
Velvet ochre
1688*



*Velvet peacock
705
Velvet peacock
705*



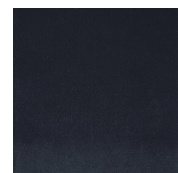
*Velvet pearl
206
Velvet pearl
206*



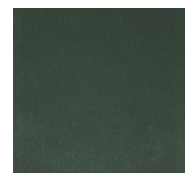
*Velvet prussian
5615
Velvet prussian
5615*



*Velvet rose
powder 4512
Velvet rose
powder 4512*



*Velvet royal
5438
Velvet royal
5438*

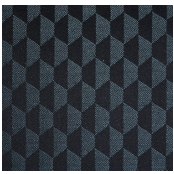


*Velvet sage
green 6381
Velvet sage
green 6381*

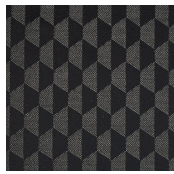


Velvet taupe
537
Velvet taupe
537

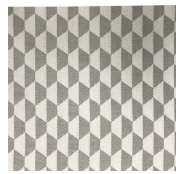
Tessuto Cat.B / Fabric Cat.B



Avassi blue
039
Avassi blue
039



Avassi
liquorice black
033
Avassi
liquorice black
033



Avassi milk
Avassi milk



Berlino blue
103
Berlino blue
103



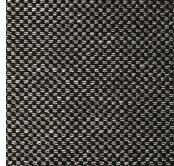
Berlino moss
102
Berlino moss
102



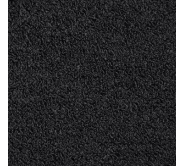
Berlino ochre
108
Berlino ochre
108



Berlino rose
powder 105
Berlino rose
powder 105



Damié
liquorice black
011
Damié
liquorice black
011



Delia black 041
Delia black 041



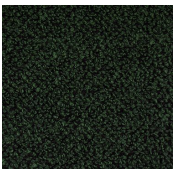
Delia brick 046
Delia brick 046



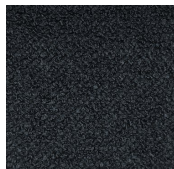
Delia grey 010
Delia grey 010



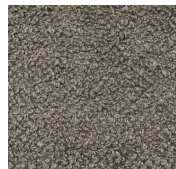
Delia milk 002
Delia milk 002



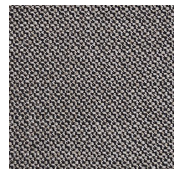
Delia moss 048
Delia moss 048



Delia royal 360
Delia royal 360



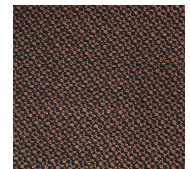
Delia sand 084
Delia sand 084



Perseo black
001
Perseo black
001



Perseo clay 022
Perseo clay 022



Perseo rose
powder 005
Perseo rose
powder 005