

# WESTSIDE COFFEE TABLE

JEAN-MARIE MASSAUD (2020)



## DESCRIPTION

Westside is the polymorphic system that reinvents the living area experience: a group of essential modules which, thanks to a deft play of combinations, presents itself as a small private island with classic angular configuration or wide deconstructed, welcoming modular sofa. Expression of absolute comfort, it suits any context: from residential to public areas and hospitality. A refined balance of materials, shapes and different heights characterizes the Westside coffee tables collection.

**Poliform**

# WESTSIDE COFFEE TABLE

JEAN-MARIE MASSAUD (2020)



## TECHNICAL DESCRIPTION

### Typology

Coffee table

### Top

Medium-density fibre panel veneered - marble

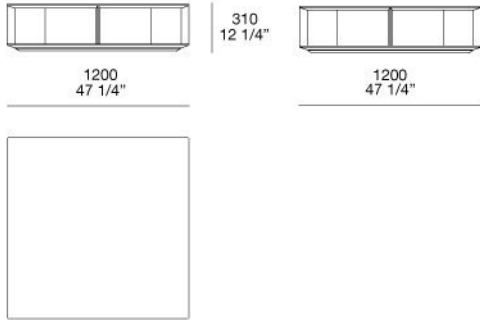
### Structure and base

Medium-density fibre panel veneered

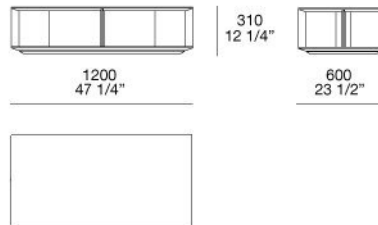
# WESTSIDE COFFEE TABLE

JEAN-MARIE MASSAUD (2020)

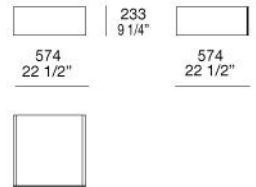
**TWE120G**



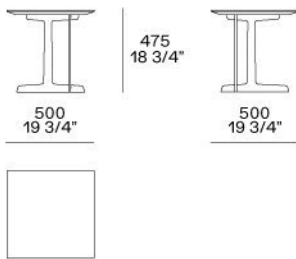
**TWE120**



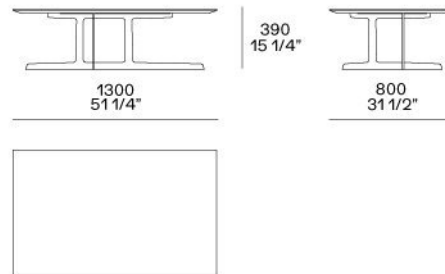
**CA001**



**TWE050**



**TWE130**



# WESTSIDE COFFEE TABLE

FINISHINGS\STRUCTURE\WOODS (1)



BLACK ELM

# WESTSIDE COFFEE TABLE

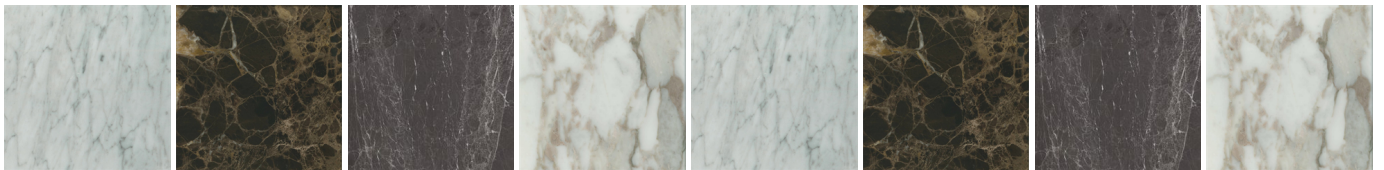
FINISHINGS\TOP\WOODS (1)



BLACK ELM

# WESTSIDE COFFEE TABLE

FINISHINGS\TOP\MARBLES POLIFORM AND ZECEVO (11)



MATT  
BIANCO  
CARRARA

MATT  
EMPERADOR

MATT GREY  
STARDUST

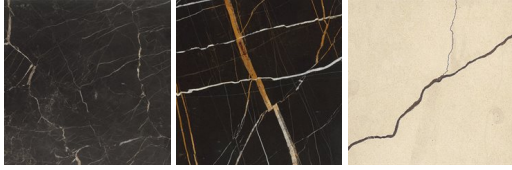
MATT  
CALACATTA  
ORO

GLOSSY  
BIANCO  
CARRARA

GLOSSY  
EMPERADOR

GLOSSY  
GREY  
STARDUST

GLOSSY  
CALACATTA  
ORO



GLOSSY  
NOIR SAINT  
LAURENT

MATT  
SAHARA  
NOIR

ZECEVO  
LEVIGATO

## WESTSIDE COFFEE TABLE

FINISHINGS\BASEWOODS (1)



BLACK ELM