

m o o o i

Sofa So Good Footstool

MARCEL WANDERS STUDIO



The Sofa So Good Demi Table is part of the modular Sofa So Good. It can act as a real centrepiece, or blend into your own Sofa So Good configuration. Versatile and sophisticated, it suits every interior and is available in a variety of six wood finishes.

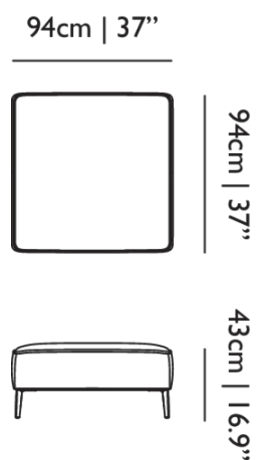
Detailing



Finished with a beautiful piping edge, Sofa So Good gives you just the right “feather feel” that supports your posture and wellbeing.

Sofa So Good Footstool / SSG Footstool

Dimensions



Product

WIDTH 94cm | 37"
HEIGHT 43cm | 16.9"
DEPTH 94cm | 37"
WEIGHT NETTO 15kg | 33.07lbs

Packaging

WIDTH 96cm | 37.8"
HEIGHT 34.5cm | 13.6"
CUBAGE 0.32m³ | 11.46ft³
LENGTH 98cm | 38.6"
WEIGHT 26kg | 57.32lbs

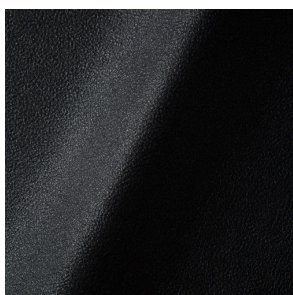
Technical

MATERIAL

Steel frame, foam on elastic straps, polished aluminum feet

Upholstery

ABBRACCI (available in 5 colours)



COMPOSITION

100% PES

ABRASION

30000 martindale
lightfastness 3 - 4
pilling 5

FIRE RESISTANCE

BS 5852 - Ignition source
0 (Cigarette)
BS 5852 - Ignition source
1 (Match flame equivalent)
EN 1021-1 (Cigarette)
EN 1021-2 (Match)
TB 117-2013

BOUCLE (available in 4 colours)



COMPOSITION

43% CO, 14% PA, 12% CV,
3% PES, 28% PAN

ABRASION

20000 martindale
lightfastness 4 - 6
pilling 4 - 5

FIRE RESISTANCE

EN 1021-1 (Cigarette)
EN 1021-2 (Match)

CANVAS 2 (available in 45 colours)



COMPOSITION

90% WO, 10% PA

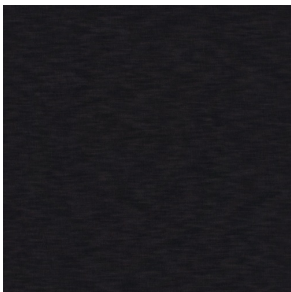
ABRASION

100000 martindale
lightfastness 6
pilling 4

FIRE RESISTANCE

BS 5852 - Ignition source
1 (Match flame equivalent)
BS 5852 - Ignition source
0 (Cigarette)
TB 117-2013
EU Ecolabel

DENIM (available in 3 colours)



COMPOSITION

100% CO

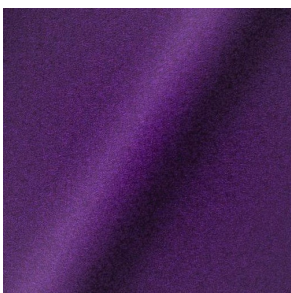
ABRASION

70000 martindale
lightfastness 4
pilling 3 - 4

FIRE RESISTANCE

BS5852 part 1 on request
US. Cal. Bull. 117-2013

DIVINA 3 (available in 56 colours)



COMPOSITION

100% WO

ABRASION

45000 martindale
lightfastness 7
pilling 3

FIRE RESISTANCE

BS 5852 - Ignition source
0 (Cigarette)
BS 5852 - Ignition source
5 (Crib 5)
BS 5852 - Ignition source
1 (Match flame equivalent)
EN 1021-1 (Cigarette)
EN 1021-2 (Match)
TB 117-2013
EU Ecolabel

DIVINA MD (available in 27 colours)



COMPOSITION

100% WO

ABRASION

45000 martindale
lightfastness 6
pilling 3

FIRE RESISTANCE

BS 5852 - Ignition source
0 (Cigarette)
BS 5852 - Ignition source
5 (Crib 5)
BS 5852 - Ignition source
1 (Match flame equivalent)
EN 1021-1 (Cigarette)
EN 1021-2 (Match)
EU Ecolabel

DIVINA MELANGE 3 (available in 60 colours)



COMPOSITION

100% WO

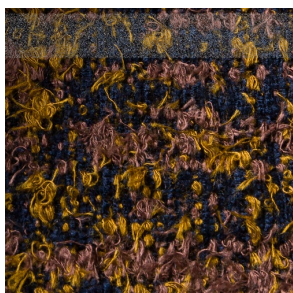
ABRASION

45000 martindale
lightfastness 6 - 7
pilling 3

FIRE RESISTANCE

BS 5852 - Ignition source
0 (Cigarette)
BS 5852 - Ignition source
5 (Crib 5)
BS 5852 - Ignition source
1 (Match flame equivalent)
EN 1021-1 (Cigarette)
EN 1021-2 (Match)
TB 117-2013
EU Ecolabel

Bearded Leopard (available in 3 colours)



COMPOSITION

77% CV, 15% PES, 7% CO,
1% PA

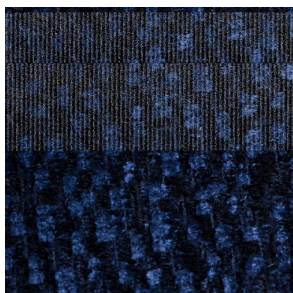
ABRASION

15000 martindale
lightfastness 4 - 6
pilling 4

FIRE RESISTANCE

BS5852 part 1 on request
US. Cal. Bull. 117-2013

Calligraphy Bird (available in 4 colours)



COMPOSITION

64% CV, 21% PES, 15%
CO

ABRASION

50000 martindale
lightfastness 4 - 6
pilling 5

FIRE RESISTANCE

BS5852 part 1 on request
US. Cal. Bull. 117-2013

Dodo Pavone (available in 3 colours)



COMPOSITION

12% CO, 88% PES

ABRASION

40000 martindale
lightfastness 5
pilling 4 - 5

FIRE RESISTANCE

BS5852 part 1 on request
US. Cal. Bull. 117-2013

Blushing Sloth Melange Mohair (available in 1 colours)



COMPOSITION

85% WV, 15% WM

ABRASION

15000 martindale
lightfastness 4 - 6
pilling 2 - 3

FIRE RESISTANCE

BS5852 part 1 on request
US. Cal. Bull. 117-2013

Blushing Sloth Woolly Mohair (available in 1 colours)



COMPOSITION

24% PES, 15% PA, 8% CO,
24% WM, 29% WV

ABRASION

40000 martindale
lightfastness 4 - 6
pilling 3 - 4

FIRE RESISTANCE

BS5852 part 1 on request
US. Cal. Bull. 117-2013

FIORD (available in 27 colours)



COMPOSITION

92% WV, 8% PA

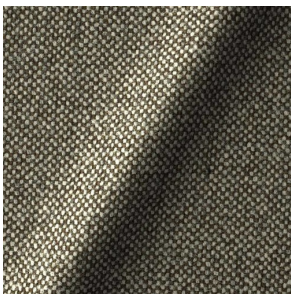
ABRASION

60000 martindale
lightfastness 6
pilling 4 - 5

FIRE RESISTANCE

EN 1021-1 (Cigarette)
EN 1021-2 (Match)
BS 5852 - Ignition source
0 (Cigarette)
BS 5852 - Ignition source
1 (Match flame equivalent)

HALLINGDAL 65 (available in 58 colours)



COMPOSITION

30% CV, 70% WV

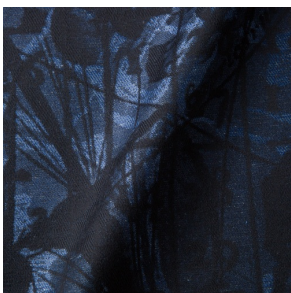
ABRASION

100000 martindale
lightfastness 7
pilling 3 - 4

FIRE RESISTANCE

BS 5852 - Ignition source
0 (Cigarette)
BS 5852 - Ignition source
5 (Crib 5)
BS 5852 - Ignition source
1 (Match flame equivalent)
EN 1021-1 (Cigarette)
EN 1021-2 (Match)
TB 117-2013
EU Ecolabel

JACQUARD, ANDAZ (available in 1 colours)



COMPOSITION

34% CO, 30% CV, 24%
LI, 12% PA

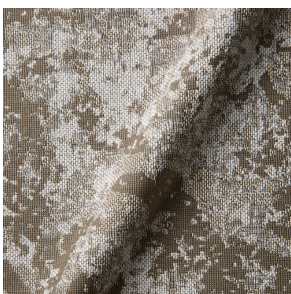
ABRASION

25000 martindale
lightfastness 4 - 6
pilling 4 - 5

FIRE RESISTANCE

BS 5852 - Ignition source
0 (Cigarette)
BS 5852 - Ignition source
1 (Match flame equivalent)
EN 1021-1 (Cigarette)
EN 1021-2 (Match)

JACQUARD, FRESC (available in 1 colours)



COMPOSITION

52% CV, 38% CO, 10% LI

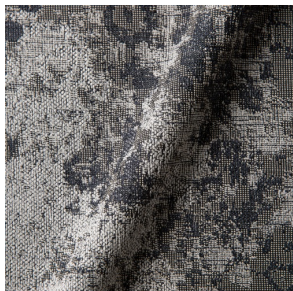
ABRASION

15000 martindale
lightfastness 3 - 4
pilling 2 - 3

FIRE RESISTANCE

BS 5852 - Ignition source
0 (Cigarette)
EN 1021-1 (Cigarette)
EN 1021-2 (Match)

JACQUARD, OLD (available in 2 colours)



COMPOSITION

52% CV, 38% CO, 10% LI

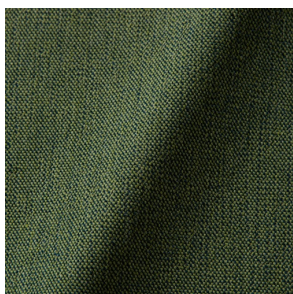
ABRASION

15000 martindale
lightfastness 3 - 4
pilling 2 - 3

FIRE RESISTANCE

BS 5852 - Ignition source
0 (Cigarette)
EN 1021-1 (Cigarette)
EN 1021-2 (Match)

JUSTO (available in 10 colours)



COMPOSITION

15% CO, 35% PC, 10% PA,
40% CV

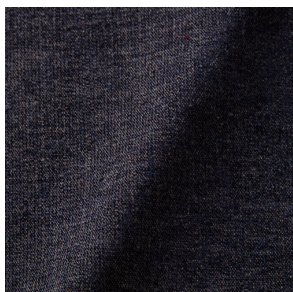
ABRASION

50000 martindale
lightfastness 5
pilling 4

FIRE RESISTANCE

EN 1021-1 (Cigarette)
EN 1021-2 (Match)
TB 117-2013

LISCIO (available in 11 colours)



COMPOSITION

35% WO, 35% CV, 21%
CO, 9% PA

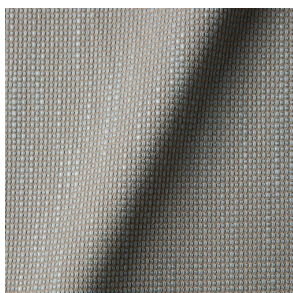
ABRASION

30000 martindale
lightfastness 4 - 6
pilling 4

FIRE RESISTANCE

TB 117-2013

MACCHEDIL GREZZO (available in 10 colours)



COMPOSITION

47% CO, 20% CV, 18%
PA, 8% LI, 5% PC

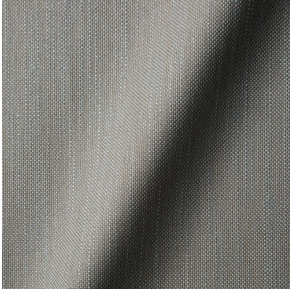
ABRASION

15000 martindale
lightfastness 3 - 5
pilling 4 - 5

FIRE RESISTANCE

BS5852 part 1 on request

MACCHEDIL SOTTILE (available in 10 colours)



COMPOSITION

49% CV, 24% PES, 21% LI,
6% CO

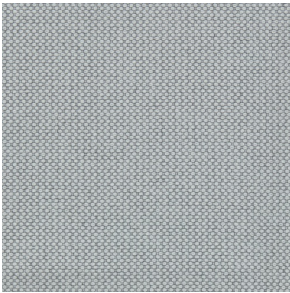
ABRASION

20000 martindale
lightfastness 3 - 5
pilling 2 - 3

FIRE RESISTANCE

BS5852 part 1 on request

MERIT (available in 43 colours)



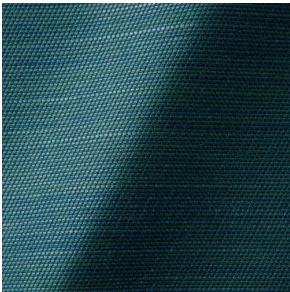
COMPOSITION

24% PES, 76%

ABRASION

85000 martindale
lightfastness 7
pilling 4

ORAY RAY (available in 15 colours)



COMPOSITION

39% LI, 38% CV, 15% PE,
8% CO

ABRASION

30000 martindale
pilling 4 - 5

FIRE RESISTANCE

BS 5852 - Ignition source
0 (Cigarette)
BS 5852 - Ignition source
1 (Match flame equivalent)
TB 117-2013

ORAY RONAN (available in 5 colours)



COMPOSITION

39% LI, 38% CV, 15% PE,
8% CO

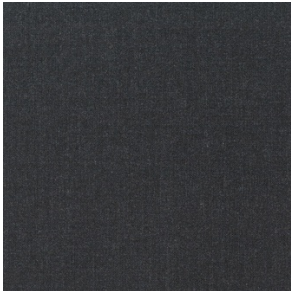
ABRASION

30000 martindale
pilling 4 - 5

FIRE RESISTANCE

BS 5852 - Ignition source
0 (Cigarette)
BS 5852 - Ignition source
1 (Match flame equivalent)
TB 117-2013

REMIX 3 (available in 53 colours)



COMPOSITION

10% PA, 90% WV

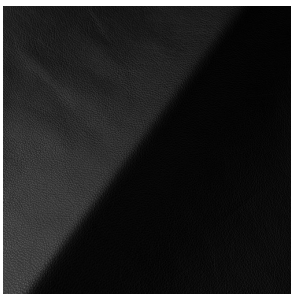
ABRASION

100000 martindale
lightfastness 5
pilling 4

FIRE RESISTANCE

BS5852 part 1
US. Cal. Bull. 117-2013

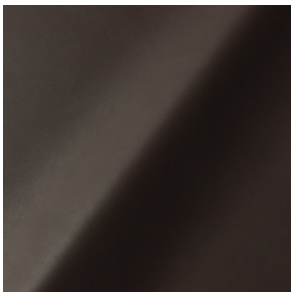
SAVANNE (available in 3 colours)



FIRE RESISTANCE

EN 1021-1 (Cigarette)
EN 1021-2 (Match)
TB 117-2013
OEKO-TEX

SHADE (available in 6 colours)



ABRASION

lightfastness 3 - 4

FIRE RESISTANCE

EN 1021-1 (Cigarette)
EN 1021-2 (Match)
TB 117-2013

SOFTLINEN (available in 2 colours)



COMPOSITION

100% LI

ABRASION

25000 martindale
lightfastness 4 - 6
pilling 3 - 4

FIRE RESISTANCE

BS 5852 - Ignition source
0 (Cigarette)
BS 5852 - Ignition source
1 (Match flame equivalent)
EN 1021-1 (Cigarette)
EN 1021-2 (Match)

SOLIS (available in 9 colours)



COMPOSITION

60% WO, 30% PES, 2%
PA, 3% PC

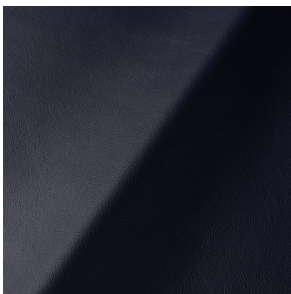
ABRASION

40000 martindale
lightfastness 5
pilling 3 - 4

FIRE RESISTANCE

EN 1021-1 (Cigarette)
EN 1021-2 (Match)
TB 117-2013

SPECTRUM (available in 11 colours)



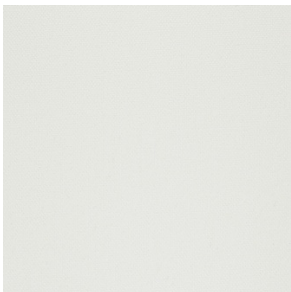
ABRASION

lightfastness 6 - 6

FIRE RESISTANCE

EN 1021-1 (Cigarette)
EN 1021-2 (Match)
TB 117-2013
OEKO-TEX

STEELCUT 2 (available in 37 colours)



COMPOSITION

90% WV, 10% PA

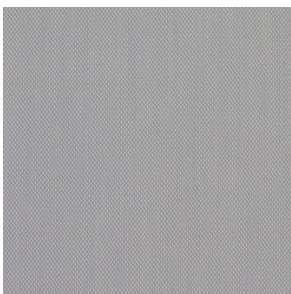
ABRASION

100000 martindale
lightfastness 6
pilling 3 - 4

FIRE RESISTANCE

BS 5852 - Ignition source
0 (Cigarette)
BS 5852 - Ignition source
1 (Match flame equivalent)
EN 1021-1 (Cigarette)
EN 1021-2 (Match)
TB 117-2013
EU Ecolabel

STEELCUT TRIO 3 (available in 54 colours)



COMPOSITION

90% WV, 10% PA

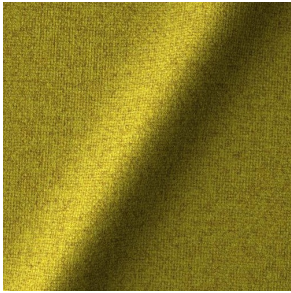
ABRASION

100000 martindale
lightfastness 5
pilling 4

FIRE RESISTANCE

BS 5852 - Ignition source
0 (Cigarette)
BS 5852 - Ignition source
1 (Match flame equivalent)
EN 1021-1 (Cigarette)
EN 1021-2 (Match)
EU Ecolabel

TONICA 2 (available in 39 colours)

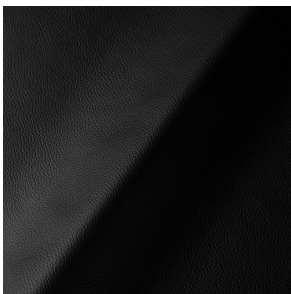


COMPOSITION
100% WV

ABRASION
45000 martindale
lightfastness 6 - 7
pilling 4 - 5

FIRE RESISTANCE
EN 1021-1 (Cigarette)
EN 1021-2 (Match)

ULTRA (available in 6 colours)



ABRASION
lightfastness 6 - 7

FIRE RESISTANCE
EN 1021-1 (Cigarette)
EN 1021-2 (Match)
TB 117-2013
ANSI/BIFMA M7.1 (Total
Volatile Organic
Compounds)

VESPER (available in 8 colours)



COMPOSITION
10% CO, 40% LI, 10% PA,
10% PES, 30% CV

ABRASION
40000 martindale
lightfastness 5
pilling 4

FIRE RESISTANCE
EN 1021-1 (Cigarette)
EN 1021-2 (Match)
TB 117-2013
