



PP0365-PP0369-PP0746

ITA **Struttura** Espanso schiumato a freddo ignifugo ① con struttura interna in acciaio ②. Basamento in acciaio verniciato opaco ③ color grafite o Oxidored Ral 3009. Puntali in acciaio cromato o in ottone ④.

Rivestimenti La poltroncina per le versioni progettate su indicazione dei designers, viene realizzata come riportato di seguito.
Nei rimanenti casi, seguire le indicazioni date per il tessuto Hallingdal come negli esempi riportati.

Caratteristiche La collezione PAPER PLANES non è sfoderabile.

DEU **Struktur** Kaltschaum feuerhemmend ①, mit Innenstruktur aus Stahl ②. Untergestell aus matt lackiertem Stahl ③ in der Farbe Graphit oder Oxidored Ral 3009. Fußgleiter aus Stahl verchromt oder aus Messing ④.

Bezüge Der Sessel für Versionen auf die Empfehlung der Designer entworfen wird wie folgt durchgeführt.
In den übrigen Fällen, das Gewebe des Typs "Hallingdal", folgen den Beispielen.

Besonderheiten Der Kollektion PAPER PLANES ist nicht abziehbar.

ENG **Structure** Injected flame-retardant foam ① over internal steel frame ②. Base in varnished matte graphite or Oxidored Ral 3009 colour steel ③. Glides in steel with chrome finish or in brass ④.

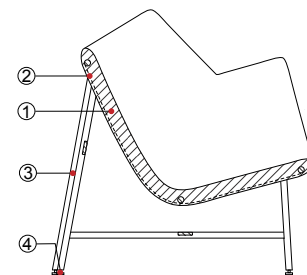
Covers The small armchair, for versions on the recommendation of the designers, is performed as follows.
In the remaining cases, the fabrics of the type "Hallingdal", follow the examples.

Features The PAPER PLANES collection covers are not removable.

FRA **Structure** Mousse ignifugée injectée à froid ①, avec structure interne en acier ②. Piètement en acier laqué mat ③ graphite ou Oxidored Ral 3009. Embouts en acier chromé ou en laiton ④.

Revêtements Le modèle, pour les versions sur la recommandation des designers, est réalisé dans les versions indiquées de suite.
Dans les autres cas, les tissus de type "Hallingdal", suivre les exemples.

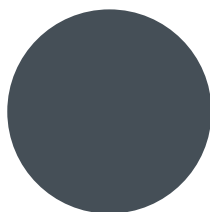
Caractéristiques Le collection PAPER PLANES n'est pas déhoussable.



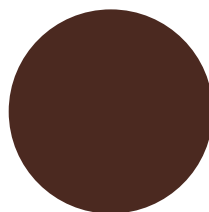
MATERIALI E FINITURE

Colori basi
Base colors
Farben Gestelle
Couleurs bases

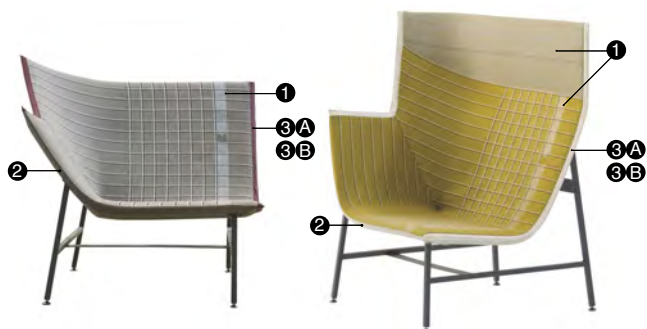
MATERIALS AND FINISHES - MATERIALIEN UND AUSFÜHRUNGEN - MATERIAUX ET FINITIONS



RAL 7024
Graphite



RAL 3009
Oxidored



MATERIALI E FINITURE

Materials and Finishes

Materialien und Ausführungen

Matériaux et Finitions

Bordino pelle a scelta 3A o 3B - Piping in leather 3A or 3B - Keder in Leder 3A oder 3B - Bordure en cuir 3A ou 3B
Y - JACQUARD Greige



A4617 SX - A5617 DX
Planes

A4283
Remix 233

3A
B0217
Lacquer ciré

3B
B0229
Saffiano red

Y - JACQUARD Mid-Blue



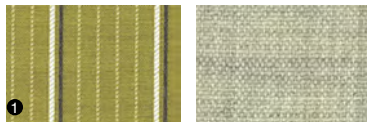
A4616 SX - A5616 DX
Planes

A4143
Remix 733

3A
B0250
Class Black Magic

3B
B0230
Saffiano turquoise

Y - JACQUARD Saffron



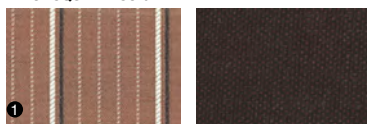
A4615 SX - A5615 DX
Planes

A4146
Remix 223

3A
B0212
Bone white

3B
B0225
Saffiano yellow

Y - JACQUARD Coral Pink



A4618 SX - A5618 DX
Planes

A4287
Remix 373

3A
B0212
Bone white

3B
B0229
Saffiano red

Y - JACQUARD Mauve



A4619 SX - A5619 DX
Planes

A4150
Remix 123

3A
B0212
Bone white

3B
B0226
Saffiano green



MATERIALI E FINITURE

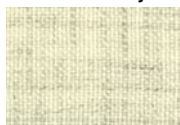
Materials and Finishes

Materialien und Ausführungen

Matériaux et Finitions

Bordino pelle a scelta 3A o 3B - Piping in leather 3A or 3B - Keder in Leder 3A oder 3B - Bordure en cuir 3A ou 3B

S - "Swarovski crystal elements" Off White



1 2

A4284

Remix 113 - white crystal



3 A

B0212

Bone white



3 B

B0229

Saffiano red

S - "Swarovski crystal elements" Light Grey



1 2

A4150

Remix 123 - black crystal



3 A

B0216

Grass cirè

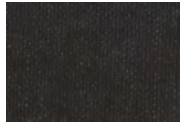


3 B

B0230

Saffiano turquoise

S - "Swarovski crystal elements" Black Blue



1 2

A4149

Remix 183 - grey crystal



3 A

B0211

Oil cirè

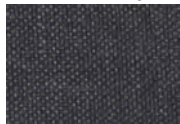


3 B

B0230

Saffiano turquoise

S - "Swarovski crystal elements" Indigo



1 2

A4375

Remix 753 - blue crystal



3 A

B0218

Blush cirè



3 B

B0225

Saffiano yellow

S - "Swarovski crystal elements" Vermilion



1 2

A4139

Remix 643 - red crystal



3 A

B0213

Tan cirè



3 B

B0226

Saffiano green



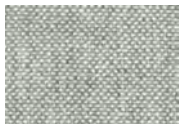
MATERIALI E FINITURE

Materials and Finishes

Materialien und Ausführungen

Matériaux et Finitions

W - HALLINGDAL N.1



1 2

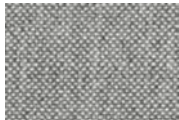
A2445
Hallingdal 110



3

B0230
Saffiano turquoise

W - HALLINGDAL N.2



1 2

A5641
Hallingdal 116



3

B0225
Saffiano yellow

W - HALLINGDAL N.3



1 2

A5636
Hallingdal 227



3

B0229
Saffiano red

W - HALLINGDAL N.4



1 2

A5634
Hallingdal 368



3

B0230
Saffiano turquoise

W - HALLINGDAL N.5



1 2

A5640
Hallingdal 840



3

B0213
Tan ciré

W - HALLINGDAL N.6



1 2

A5632
Hallingdal 526



3

B0212
Bone white

W - HALLINGDAL N.7



1 2

A5642
Hallingdal 596



3

B0225
Saffiano yellow

W - HALLINGDAL N.8



1 2

A5630
Hallingdal 407



3

B0212
Bone white

W - HALLINGDAL N.9



1 2

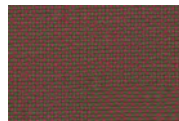
A5633
Hallingdal 680



3

B0219
Powder ciré

W - HALLINGDAL N.10



1 2

A3744
Hallingdal 660



3

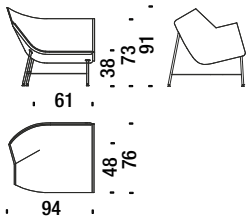
B0226
Saffiano green

Poltrona bassa sx Hallingdal ricamato

379

Left low Hallingdal embroid.armchair - Sessel tief links Hallingdal gestickt - Fauteuil bas gauche Hallingdal brodé

0,8 m³ 35 Kg

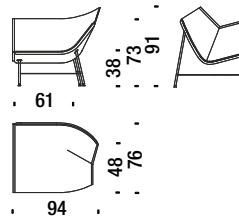


Poltrona bassa dx Hallingdal ricamato

380

Right low Hallingdal embroid.armchair - Sessel tief rechts Hallingdal gestickt - Fauteuil bas droit Hallingdal brodé

0,8 m³ 35 Kg

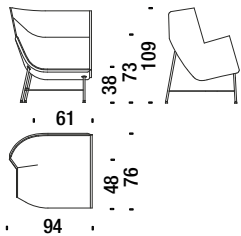


Poltrona alta sx Hallingdal ricamato

381

Left high Hallingdal embroid.armchair - Sessel hoch links Hallingdal gestickt - Fauteuil haut gauche Hallingdal brodé

1,2 m³ 40 Kg

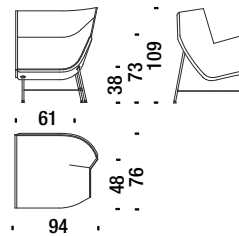


Poltrona alta dx Hallingdal ricamato

382

Right high Hallingdal embroid.armchair - Sessel hoch rechts Hallingdal gestickt - Fauteuil haut droit Hallingdal brodé

1,2 m³ 40 Kg

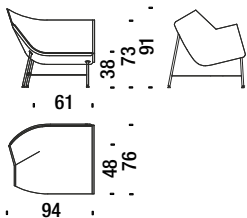


Poltrona bassa sx Jacquard

365

Left low armchair Jacquard - Sessel tief links Jacquard - Fauteuil bas gauche Jacquard

0,8 m³ 35 Kg

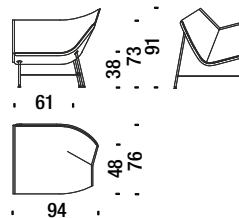


Poltrona bassa dx Jacquard

366

Right low armchair Jacquard - Sessel tief rechts Jacquard - Fauteuil bas droit Jacquard

0,8 m³ 35 Kg

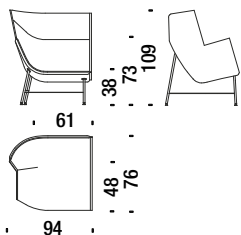


Poltrona alta sx Jacquard

368

Left high armchair Jacquard - Sessel hoch links Jacquard - Fauteuil haut gauche Jacquard

1,2 m³ 40 Kg

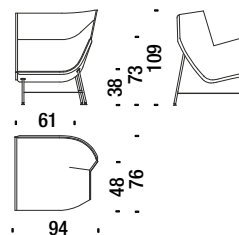


Poltrona alta dx Jacquard

369

Right high armchair Jacquard - Sessel hoch rechts Jacquard - Fauteuil haut droit Jacquard

1,2 m³ 40 Kg



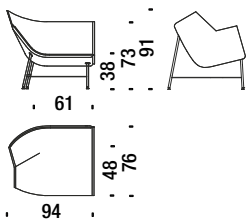
Poltrona bassa sx con Swarovski

371

Left low armchair with Swarovski - Sessel tief links mit Swarovski - Fauteuil bas gauche avec Swarovski



0,8 m³ 35 Kg



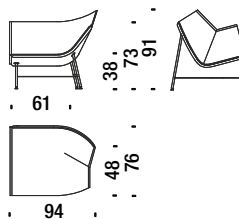
Poltrona bassa dx con Swarovski

372

Right low armchair with Swarovski - Sessel tief rechts mit Swarovski - Fauteuil bas droit avec Swarovski



0,8 m³ 35 Kg



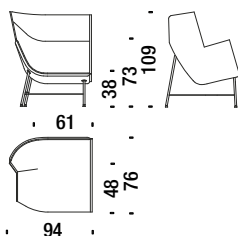
Poltrona alta sx con Swarovski

374

Left high armchair with Swarovski - Sessel hoch links mit Swarovski - Fauteuil haut gauche avec Swarovski



1,2 m³ 40 Kg



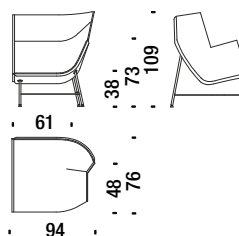
Poltrona alta dx con Swarovski

375

Right high armchair with Swarovski - Sessel hoch rechts mit Swarovski - Fauteuil haut droit avec Swarovski



1,2 m³ 40 Kg

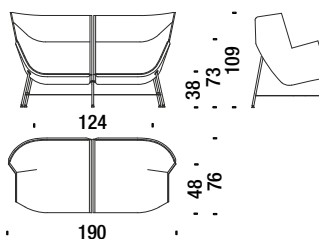


Divano Hallingdal ricamato

744

Sofa Hallingdal embroidered - Sofa Hallingdal gestickt - Canapè Hallingdal brodé

1,7 m³ 70 Kg



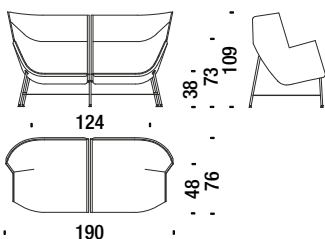
Divano Jacquard

745

Sofa Jacquard - Sofa Jacquard - Canapè Jacquard



1,7 m³ 70 Kg

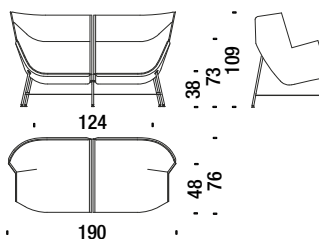


Divano con Swarovski

746

Sofa with Swarovski - Sofa mit Swarovski - Canapè avec Swarovski

1,7 m³ 70 Kg



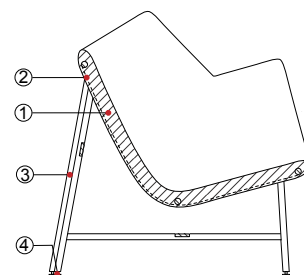
Moroso **Setting
the
Elegance**

**Textiles by
Kvadrat + Rubelli**

Paper planes

Nipa Doshi & Jonathan Levien
2010

PPO



ITA **Struttura** Espanso schiumato a freddo ignifugo ① con struttura interna in acciaio ②. Basamento in acciaio verniciato opaco ③ color grafite o Oxidored Ral 3009. Puntali in acciaio cromato o in ottone ④.

Caratteristiche La collezione PAPER PLANES non è sfoderabile.

DEU **Struktur** Kaltschaum feuerhemmend ①, mit Innenstruktur aus Stahl ②. Untergestell aus matt lackiertem Stahl ③ in der Farbe Graphit oder Oxidored Ral 3009. Fußgleiter aus Stahl verchromt oder aus Messing ④.

Besonderheiten Der Kollektion PAPER PLANES ist nicht abziehbar.

ENG **Structure** Injected flame-retardant foam ① over internal steel frame ②. Base in varnished matte graphite or Oxidored Ral 3009 colour steel ③. Glides in steel with chrome finish or in brass ④.

Features The PAPER PLANES collection covers are nor removable.

FRA **Structure** Mousse ignifugée injectée à froid ①, avec structure interne en acier ②. Piètement en acier laqué mat ③ graphite ou Oxidored Ral 3009. Embouts en acier chromé ou en laiton ④.

Caractéristiques Le collection PAPER PLANES n'est pas déhoussable.

MATERIALI E FINITURE

MATERIALS AND FINISHES - MATERIALIEN UND AUSFÜHRUNGEN - MATERIAUX ET FINITIONS

Colori basi
Base colors
Farben Gestelle
Couleurs bases



RAL 7024
Graphite



RAL 3009
Oxidored

Paper planes

Nipa Doshi & Jonathan Levien
2010

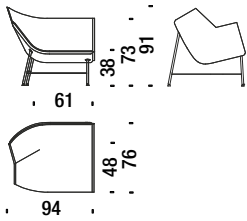
PP0

Poltrona bassa sinistra

438

Left low armchair - Sessel tief links - Fauteuil bas gauche

0,8 m³ 35 Kg

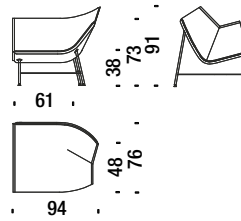


Poltrona bassa destra

437

Right low armchair - Sessel tief rechts - Fauteuil bas droite

0,8 m³ 35 Kg

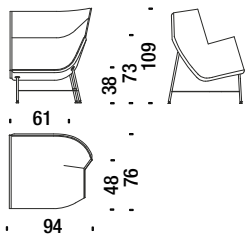


Poltrona alta sinistra

440

Left high armchair - Sessel hoch links - Fauteuil haut gauche

1,2 m³ 40 Kg



Poltrona alta destra

439

Right high armchair - Sessel hoch rechts - Fauteuil haut droite

1,2 m³ 40 Kg

