

Ringer

Dining table round base,
by Michael Anastassiades

kettal

Dining table round base

Designer
Michael Anastassiades

Collection
Ringer

Reference
KS7700200

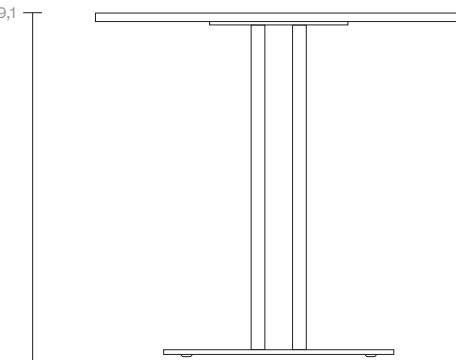
1/3

The Ringer Collection is the first collaboration between Kettal and Michael Anastassiades, and was conceived as a minimal approach to Café dining furniture.

The title references the traditional Game of Horseshoes, and links to the gesture of the armrest sitting on top of the legs. Michael made use of Kettal's expertise in aluminium fabrication to create a robust collection which is still easy to move and rearrange.

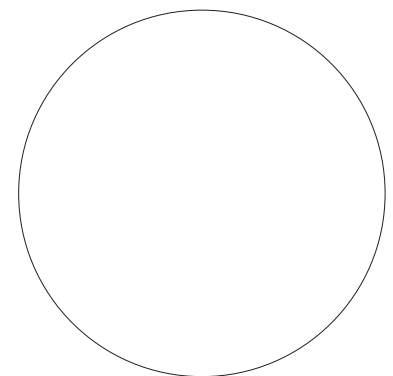
cm/inch

74/29,1



cm/inch

Ø60/23,6



Ø80/31,5
Ø90/35,4



kettal

Dining table round base

Designer
Michael Anastassiades

Collection
Ringer

Reference
KS7700200

2/3

Materials

Aluminium
Antioxy, Heavy Load, Resistant
En-1421, Kettalize-It, Anti-
Scratch, Easy Clean,
Flame Retardant M1, Eco Friendly
Ecoembes Recycling Process

Maintenance

Clean with mild soap using
sponge or cloth. Be gentle
while cleaning, do not scrub
aggressively the fabric. Once
cleaned please make sure you
remove soap excess.

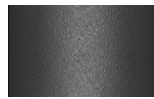
In case of aggressive stains
clean with diluted household
bleach.

Clean stains promptly. The
longer it remains, more difficult
will be to remove.

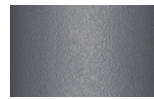
Once cleaned the fabric steam
iron the fabric. Just use steam,
be carefull NOT placing the
iron directly in the fabric it will
get damage.

Table Top / Base Colour

Terrain Paints (for Aluminium)



Slate Stone
01C



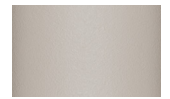
Mysty Smoke
02C



Ash
03C



Bone
04C



Tuff
05C



Wet Stone
06C



Sand Dune
07C



Dry Clay
08C



Arabica
09C



Sepia
19C



Rose Canyon
16C



Blossom
20C



Ruby Dust
18C



Sunset Glow
17C



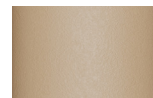
Terrarosa
15C



Terracota
14C



Amber
13C



Ginger Root
12C



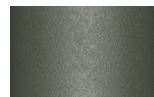
Desert Storm
11C



African Savannah
10C



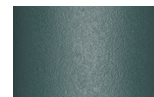
Spring Meadow
28C



Kombu
29C



Forest Stream
27C



Sea Moss
26C



Glacier Ice
25C



Polar Sky
24C



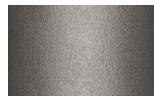
Nightfall
23C



Indigo
22C



Wild Lupin
21C



Galena
33C



Bronze
30C



Corten
31C



Manganese
32C

Dining table round base

Designer
Michael Anastassiades

Collection
Ringer

Reference
KS7700200

3/3

Other Characteristics

 Adjustable legs

Table Top Options

Aluminium Ø90
Glaze Ø90
Teak Ø80 contract (Untreated)
Teak Ø90 contract (Untreated)
White Marble Ø90

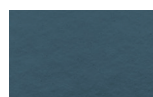
Table Top Colour Options



Dolomite
373



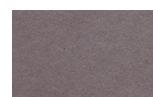
Indian Sapphire
371



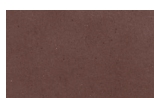
Montana
377



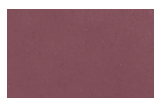
Erinite
376



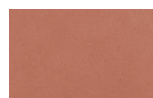
Black Diamond
374



Smoky Quartz
370



Jasper
375



Obsidian
372

Table Top Colour Options



Teak
904



Marble
079

Glaze Paints (for Glaze)

Other