

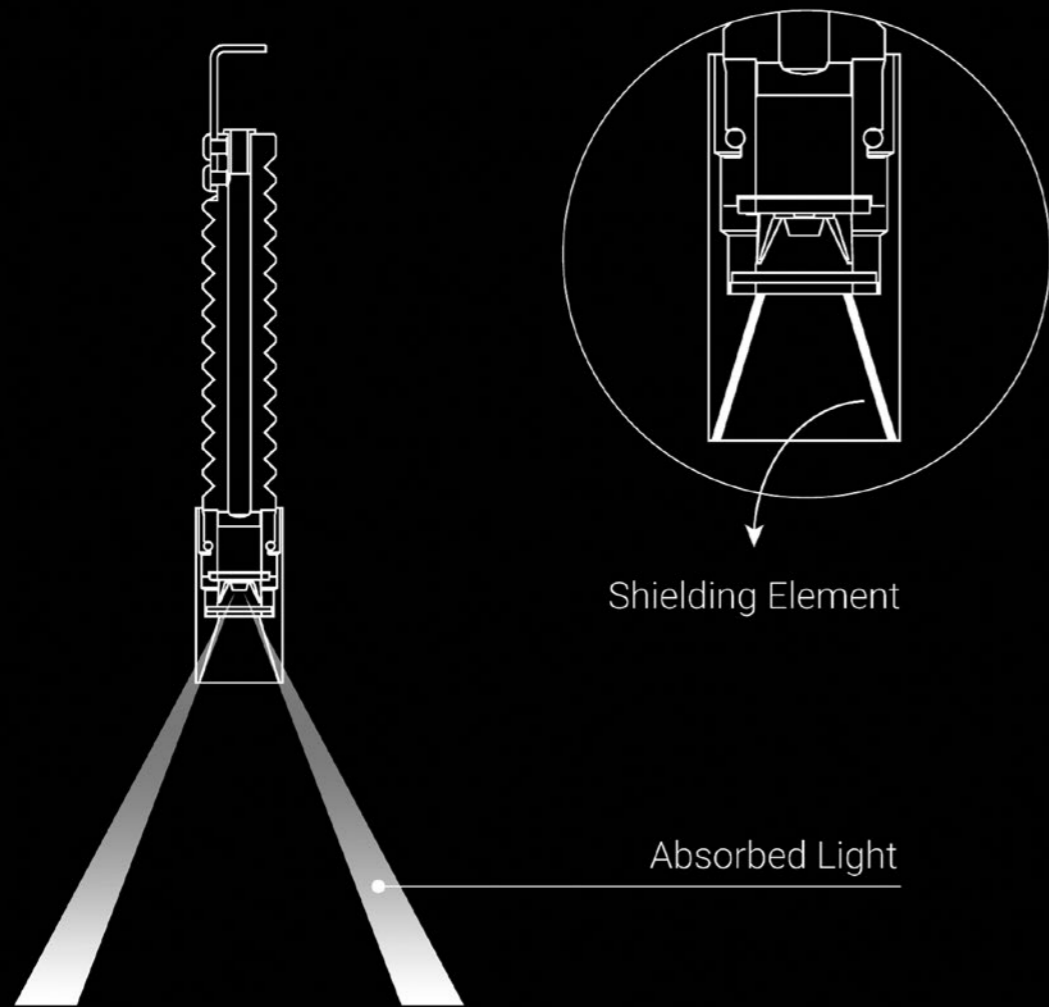
Nulla is an extreme expression of subtraction, uniting optics and electronics as an answer to the ultimate challenge: the absence of structural support, the essence of light. In 2010, Nulla was the first to grasp the mono-dimensionality of LEDs.

Nulla is a project that represents both the beginning and the end of my work on light.

It's the beginning, in the sense that I have always been looking for absolute light, it's the end because it represents the total synthesis of my work. It is the most generous of my lamps. Its sole objective is to hide and give all the attention to whatever it is lighting.

Compasso d'Oro ADI Award, 2014





The **Extradark** system associates an optical TIR PMMA lens to an element that geometrically shields the light beam viewing angle to obtain highly uniform lighting and full beam control. The polished black light shield is used to control the mirror reflection of the light, perfectly controlling the unified glare rating ($UGR^* < 19$).

** UGR stands for Unified Glare Rating.
The rating is subject to national and European standards that set the permitted limits in working environments.*



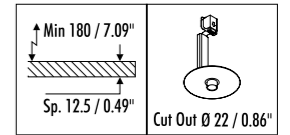
Compasso d'Oro ADI
Award 2014

DESIGN DAVIDE GROPPI - 2010
RECESSED CEILING LAMP - METAL



EXTRADARK LUMINAIRE

The sizes are expressed in millimeters / inches.

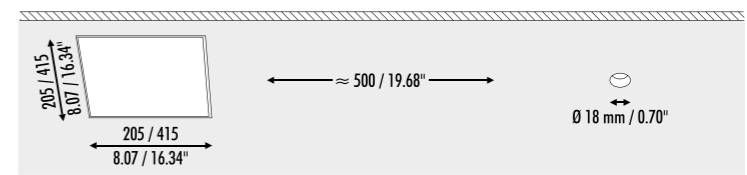
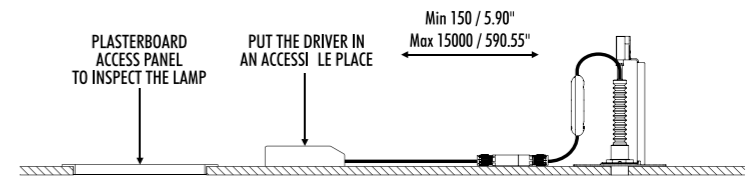
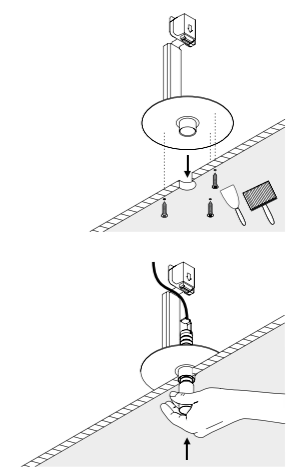
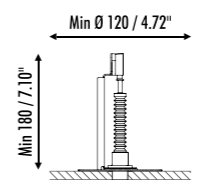
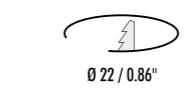
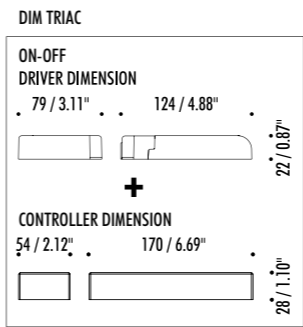
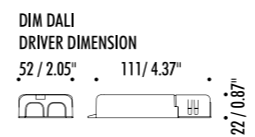
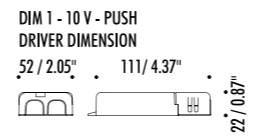


1A2010003.27.20	STANDARD - 2700K	24 V DC - 4,5 W LED
1A2010003.30.20	STANDARD - 3000K	2700K - 174 lm - CRI > 90
		3000K - 186 lm - CRI > 90
		VISIBLE HOLE Ø 18 mm
		COMPULSORY INSTALLATION KIT NOT INCLUDED
		DRIVER NOT INCLUDED

COMPULSORY INSTALLATION KITS

1A2210400.00.00	MATT BLACK	PLASTERBOARD FLANGE 12,5 mm
		PLASTERBOARD CUT-OUT Ø 22 mm
		MINIMUM SPACE FOR MOUNTING 180 mm





COMPULSORY INSTALLATION KITS

1Z0240870.24	STANDARD	DRIVER INPUT (110-127 V) 120 V - 60 Hz - OUTPUT 24 V DC - (15 W) 20 W - IP20 PUSH DIMMABLE
1Z0241180.24	STANDARD	DRIVER INPUT (110-127 V) 120 V - 60 Hz - OUTPUT 24 V DC - (15 W) 16 W - IP20 DALI DIMMABLE

COMPULSORY INSTALLATION KITS FOR TRIAC DIMMING: DRIVER 1Z0240410.24 + CONTROLLER 1Z0000034

1Z0240410.24	STANDARD	DRIVER INPUT (110-127 V) 120 V - 60 Hz - OUTPUT 24 V DC - (12 W) 22 W - IP20 NOT DIMMABLE
1Z0000034	STANDARD	CONTROLLER DIMMABLE