

DATASHEET

Type: **MONA MEDIUM**
Name: Floor light
ID: US980
Designed by: Lucie Koldová



Download

Description

The collection is a showcase of original design and refined combinations of materials, such as glass and metal. It features a tubular LED light source with a range of colour temperatures to choose from.

Tech. description

The light comprises a glass shade, metal body, and tubular LED light source with triplex opal glass diffusor. The LED light source and glass shade assembly is secured with metal endcaps and attached to the body of the light with a connector. The electronics are housed in the base.

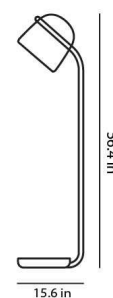


Colours options: https://brokis.sharepoint.com/:b:/s/brokis_sp/EW5rpNKyOPBEiJOt243kVPAB_RSr6BGWoRLH_4Jib8NkxQ

CONSTRUCTION SPECIFICATION

Weight: 24.5 lb
Construction material: glass, metal
Cord length [in]: 86.61 "
Mounting: Floor
Environment: Dry

DIMENSIONS [in]



ELECTRICAL SPECIFICATION

Input voltage [V]: 100 - 240 V
Frequency [Hz]: 50-60 Hz
Max. power [W]: 10 W
Coverage IP: 20
Socket: -
Light source: non-user replaceable LED module

CERTIFICATIONS

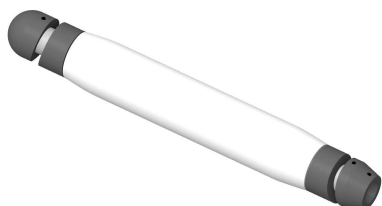


BROKIS S.R.O.
ŠPANILOVA 1315/25
163 00 PRAHA 6 - ŘEPY
CZECH REPUBLIC

ORG ID 64940799
VAT ID CZ64940799
C 42174 MĚSTSKÝ SOUD
V PRAZE

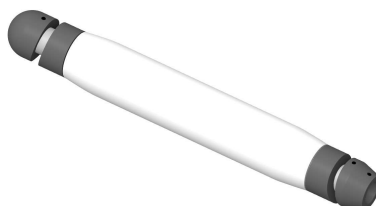
TEL +420 567 211 517
TECHNICAL@BROKIS.CZ
INFO@BROKIS.CZ
WWW.BROKIS.CZ

2022_09
PAGE 1



CP12411

Type	LED module
Lamp wattage [W]	7,7 W
Input voltage [V]	24 VDC
Energy class	E
Flux [lm]	327 lm
Light colour [K]	2700 K
CRI	90+
Lifespan [h]	20000h
Dimmable	yes (PWM)



CP12412

Type	LED module
Lamp wattage [W]	7,7 W
Input voltage [V]	24 VDC
Energy class	E
Flux [lm]	360 lm
Light colour [K]	4000 K
CRI	90+
Lifespan [h]	20000h
Dimmable	yes (PWM)



CP12413

Type	LED module
Lamp wattage [W]	7,7 W
Input voltage [V]	24 VDC
Energy class	E
Flux [lm]	387 lm
Light colour [K]	5000 K
CRI	90+
Lifespan [h]	20000h
Dimmable	yes (PWM)

DATASHEET

Type: **MONA LARGE**
Name: Floor light
ID: US949
Designed by: Lucie Koldová



Download

Description

The collection is a showcase of original design and refined combinations of materials, such as glass and metal. It features a tubular LED light source with a range of colour temperatures to choose from.

Tech. description

The light comprises a glass shade, metal body, and tubular LED light source with triplex opal glass diffusor. The LED light source and glass shade assembly is secured with metal endcaps and attached to the body of the light with a connector. The electronics are housed in the base.

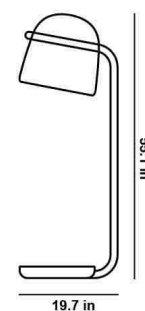


Colours options: https://brokis.sharepoint.com/:b:/s/brokis_sp/Edye6KrlrLxAiDjG7iPT8zQBYWubFqV9SqwugdRp9IHHz0g

CONSTRUCTION SPECIFICATION

Weight: 26.46 lb
Construction material: glass, metal
Cord length [in]: 86.61 "
Mounting: Floor
Environment: Dry

DIMENSIONS [in]



ELECTRICAL SPECIFICATION

Input voltage [V]: 100 - 240 V
Frequency [Hz]: 50-60 Hz
Max. power [W]: 14 W
Coverage IP: 20
Socket: non-user replaceable LED module
Light source: -

CERTIFICATIONS

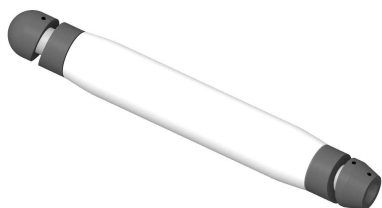


BROKIS S.R.O.
ŠPANILOVA 1315/25
163 00 PRAHA 6 - ŘEPY
CZECH REPUBLIC

ORG ID 64940799
VAT ID CZ64940799
C 42174 MĚSTSKÝ SOUD
V PRAZE

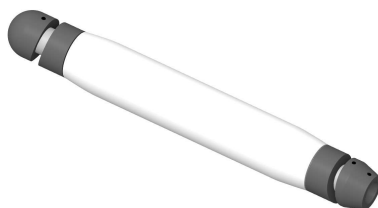
TEL +420 567 211 517
TECHNICAL@BROKIS.CZ
INFO@BROKIS.CZ
WWW.BROKIS.CZ

2022/09
PAGE 1



CP14586

Type	LED module
Lamp wattage [W]	13 W
Input voltage [V]	24 VDC
Energy class	E
Flux [lm]	552 lm
Light colour [K]	2700 K
CRI	90+
Lifespan [h]	20000h
Dimmable	yes (PWM)



CP14587

Type	LED module
Lamp wattage [W]	13 W
Input voltage [V]	24 VDC
Energy class	E
Flux [lm]	610 lm
Light colour [K]	4000 K
CRI	90+
Lifespan [h]	20000h
Dimmable	yes (PWM)



CP14588

Type	LED module
Lamp wattage [W]	13 W
Input voltage [V]	24 VDC
Energy class	E
Flux [lm]	654 lm
Light colour [K]	5000 K
CRI	90+
Lifespan [h]	20000h
Dimmable	yes (PWM)