

Molo

Double chaise lounge

by Rodolfo Dordoni

kettal

Double chaise lounge

Designer
Rodolfo Dordoni

Collection
Molo

Reference
KS4211200

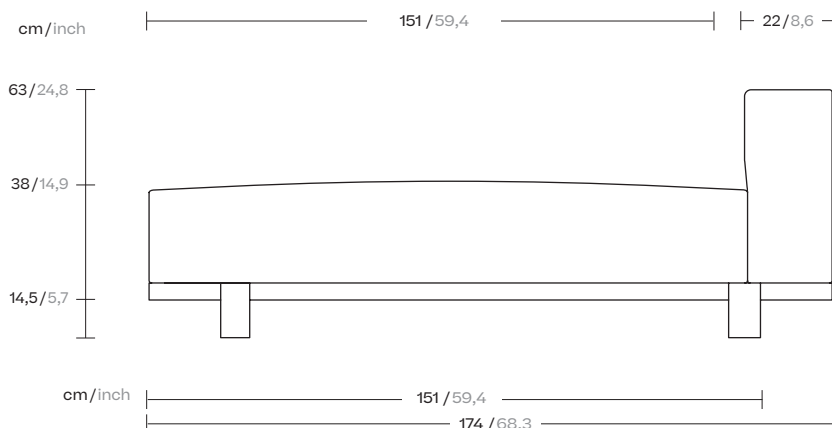
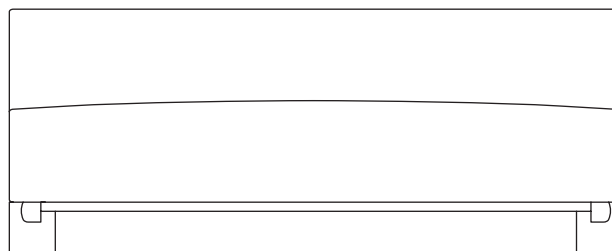
1/4

This is an example of a modular sofa in its purest form. Its orthogonal geometry is based on a rectangular modularity design, which means it can be easily adapted to suit any situation and optimise the space in which it sits.

Each module can be taken apart and re-organised, creating new uses and configurations.

The design is aesthetically minimalistic with intentionally oversized pieces.

On the other hand, the decorative elements have conscientiously not been emphasised in order to give centre stage to the various combinations of fabric, colours and carefully selected details.



kettal

Double chaise lounge

Designer
Rodolfo Dordoni

Collection
Molo

Reference
KS4211200

2/4

Legs Options



Teak



Low

Piping Options



No Piping



With Piping

Double chaise lounge

Designer
Rodolfo Dordoni

Collection
Molo

Reference
KS4211200

3/4

Materials

Fabric
Heavy Load 100.000 Cycles,
Heavy Load Resistant 1000
Decitex, Kettalize-It, Resist U.v.
En-581-4, Easy Clean, Abrasion,
Resistance 30.000 Cycles,
Quickdry

Aluminium
Antioxy, Heavy Load, Resistant
En-1421, Kettalize-It, Anti-
Scratch, Easy Clean, Flame
Retardant M1, Eco Friendly
Ecoembes Recycling Process

Teak
Teak A-Grade, Eco Friendly
Oeko-Tek

Maintenance

Clean with mild soap using
sponge or cloth. Be gentle
while cleaning, do not scrub
aggressively the fabric. Once
cleaned please make sure you
remove soap excess.

In case of aggressive stains
clean with diluted household
bleach.

Clean stains promptly. The
longer it remains, more difficult
will be to remove.

Once cleaned the fabric steam
iron the fabric. Just use steam,
be carefull NOT placing the
iron directly in the fabric it will
get damage.

Frame Colour Options



Chalk
721



Bone
678



Tuff
103



Mist
773



Flint
734



London Clay
729



Mahogany
100



Carbon
737



Lilac
104



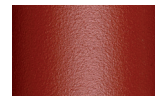
Feldspar
082



Sepia
088



Terra Rossa
087



Magma
086



Terracota
085



Sahara
139



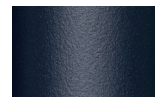
Camomile
106



Aquamarine
107



Cobalt
089



Indigo
094



Jade
091



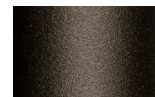
Onyx
101



Juniper
092



Amazon
102



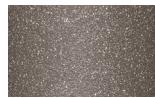
Bronze
093



Corten
727



Claystone
741



Sand Storm
132



Pumice
131



Galena
105



Manganese
726

Legs Colour Options



Teak
904



Concrete
880

Other

Double chaise lounge

Designer
Rodolfo Dordoni

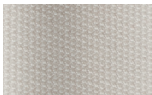


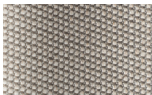







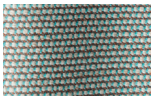







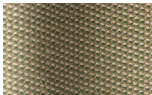
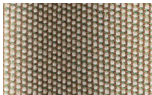
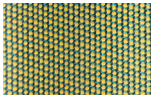
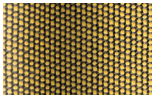

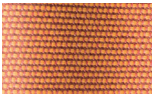

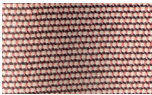
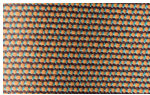
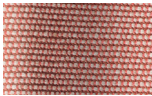
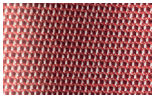

Collection
Molo

Reference
KS4211200

4/4

Fabric & Cushion Colour Options

Terrain Laminate Fabrics

				
White Cliffs 290	Dry Sand 285	Porous Grey 291	Limestone 292	Fog 289
				
Deer 286	Wet Sand 287	Cobblestone 302	Cyprus Umber 301	Loam 297
				
Charcoal 293	Arctic 295	Fjord 248	Cerulean 314	Caribbean 298
				
Atlantic 311	Rainforest 312	Lagoon 249	Cedar 288	Moss 296
				
Olive 313	Autumn 315	Summer Sky 317	Golden Sand 303	Flamma 304
				
Sunrise 299	Saffron 305	Burnt Sienna 306	Ash Rose 294	Cooper 316
				
Dusk Pink 307	Flamingo 310	Coral 309	Sandstone 308	