

m o o o i

# Hortensia Armchair

ANDRÉS REISINGER & JÚLIA ESQUÉ



The Hortensia Armchair, by Andrés Reisinger & Júlia Esqué, innovatively replicates the beauty of nature. This blooming beauty is inspired by the basic human need for warmth and comfort. Sit down and feel comforted, calm, and soothed. As if you're sitting in a blooming flower, enveloped in smooth and gentle petals. The wondrous Hortensia Armchair will be the softest place in your home. Configurable in a range of different fabrics and leathers of your choice, the Hortensia Armchair blooms in any interior.

---

## *Detailing*



The armchair's curves and signature fabric are inspired by Hortensia flowers: a voluminous plant with blooming petals.

# Hortensia Armchair

## Dimensions

107cm | 42.1"



95cm | 37.4"

55cm | 21.7"



43cm | 16.9"



76cm | 29.9"

## Product

**WIDTH** 107cm | 42.1"

**HEIGHT** 76cm | 29.9"

**DEPTH** 95cm | 37.4"

**WEIGHT NETTO** 48.3kg | 106.48lbs

## Packaging

**WIDTH** 104cm | 40.9"

**HEIGHT** 83cm | 32.7"

**CUBAGE** 1m<sup>3</sup> | 35.36ft<sup>3</sup>

**LENGTH** 116cm | 45.7"

**WEIGHT** 62.5kg | 137.79lbs

## Technical

### MATERIAL

Moulded foam on metal frame

### HEIGHT ARMREST

53cm | 20.9"

### HEIGHT ARMREST 2

67cm | 26.4"

### SEAT DEPTH

54cm | 21.3"

### SEAT HEIGHT

43cm | 16.9"

### SEAT HEIGHT 2

38cm | 15"

### SEAT WIDTH

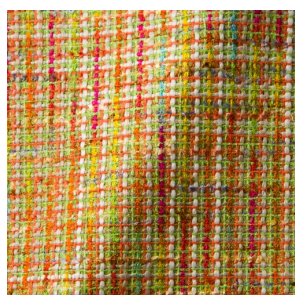
55cm | 21.7"

### SEATING CAPACITY

1

## Upholstery

*BOUCLE (available in 4 colours)*



### COMPOSITION

43% CO, 14% PA, 12% CV,  
3% PES, 28% PAN

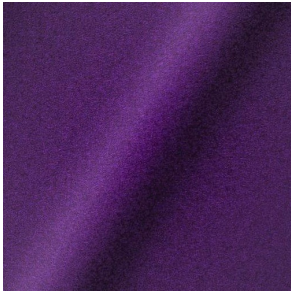
### ABRASION

20000 martindale  
lightfastness 4 - 6  
pilling 4 - 5

### FIRETEST

BS5852 part 1

*DIVINA 3 (available in 56 colours)*



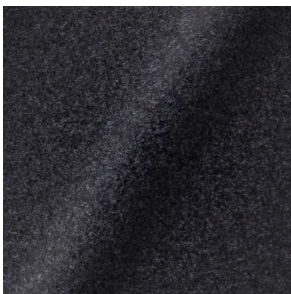
**COMPOSITION**  
100% WO

**ABRASION**  
45000 martindale  
lightfastness 7  
pilling 3

**FIRETEST**  
BS5852 part 1  
US. Cal. Bull. 117-2013

---

*DIVINA MD (available in 27 colours)*



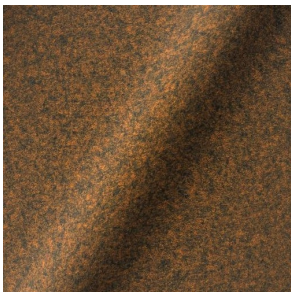
**COMPOSITION**  
100% WO

**ABRASION**  
45000 martindale  
lightfastness 6  
pilling 3

**FIRETEST**  
BS5852 part 1  
US. Cal. Bull. 117-2013

---

*DIVINA MELANGE 3 (available in 60 colours)*



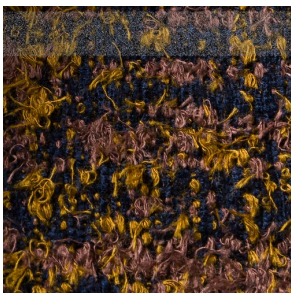
**COMPOSITION**  
100% WO

**ABRASION**  
45000 martindale  
lightfastness 6 - 7  
pilling 3

**FIRETEST**  
BS5852 part 1  
US. Cal. Bull. 117-2013

---

*Bearded Leopard (available in 3 colours)*



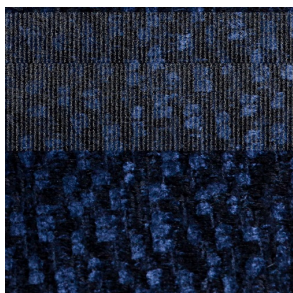
**COMPOSITION**  
77% CV, 15% PES, 7% CO,  
1% PA

**ABRASION**  
15000 martindale  
lightfastness 4 - 6  
pilling 4

**FIRETEST**  
BS5852 part 1 on request  
US. Cal. Bull. 117-2013

---

*Calligraphy Bird (available in 4 colours)*



**COMPOSITION**

64% CV, 21% PES, 15%  
CO

**ABRASION**

50000 martindale  
lightfastness 4 - 6  
pilling 5

**FIRETEST**

BS5852 part 1 on request  
US. Cal. Bull. 117-2013

---

*Dodo Pavone (available in 3 colours)*



**COMPOSITION**

12% CO, 88% PES

**ABRASION**

40000 martindale  
lightfastness 5  
pilling 4 - 5

**FIRETEST**

BS5852 part 1 on request  
US. Cal. Bull. 117-2013

---

*Blushing Sloth Melange Mohair (available in 1 colours)*



**COMPOSITION**

85% WV, 15% WM

**ABRASION**

15000 martindale  
lightfastness 4 - 6  
pilling 2 - 3

**FIRETEST**

BS5852 part 1 on request  
US. Cal. Bull. 117-2013

---

*Blushing Sloth Woolly Mohair (available in 1 colours)*



**COMPOSITION**

24% PES, 15% PA, 8% CO,  
24% WM, 29% WV

**ABRASION**

40000 martindale  
lightfastness 4 - 6  
pilling 3 - 4

**FIRETEST**

BS5852 part 1 on request  
US. Cal. Bull. 117-2013

---

*FIORD (available in 27 colours)*



**COMPOSITION**

92% WV, 8% PA

**ABRASION**

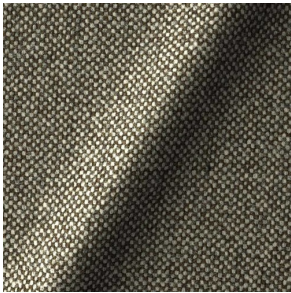
60000 martindale  
lightfastness 6  
pilling 4 - 5

**FIRETEST**

BS5852 part 1 on request  
US. Cal. Bull. 117-2013

---

*HALLINGDAL 65 (available in 58 colours)*



**COMPOSITION**

30% CV, 70% WV

**ABRASION**

100000 martindale  
lightfastness 7  
pilling 3 - 4

**FIRETEST**

BS5852 part 1

---

*JACQUARD, FRESC (available in 1 colours)*



**COMPOSITION**

52% CV, 38% CO, 10% LI

**ABRASION**

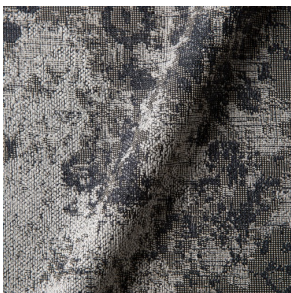
15000 martindale  
lightfastness 3 - 4  
pilling 2 - 3

**FIRETEST**

BS5852 part 1 on request  
US. Cal. Bull. 117-2013

---

*JACQUARD, OLD (available in 2 colours)*



**COMPOSITION**

52% CV, 38% CO, 10% LI

**ABRASION**

15000 martindale  
lightfastness 3 - 4  
pilling 2 - 3

**FIRETEST**

BS5852 part 1 on request  
US. Cal. Bull. 117-2013

---

*JUSTO (available in 10 colours)*



**COMPOSITION**

15% CO, 35% PC, 10% PA,  
40% CV

**ABRASION**

50000 martindale  
lightfastness 5  
pilling 4

**FIRETEST**

BS5852 part 1 on request  
US. Cal. Bull. 117-2013

---

*LISCIO (available in 11 colours)*



**COMPOSITION**

35% WO, 35% CV, 21%  
CO, 9% PA

**ABRASION**

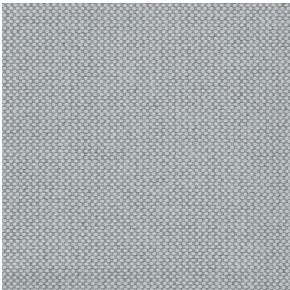
30000 martindale  
lightfastness 4 - 6  
pilling 4

**FIRETEST**

BS5852 part 1 on request  
US. Cal. Bull. 117-2013

---

*MERIT (available in 43 colours)*



**COMPOSITION**

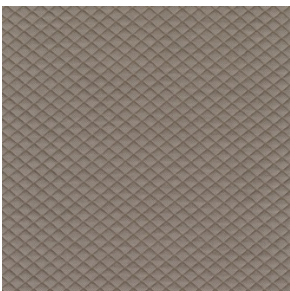
24% PES, 76%

**ABRASION**

85000 martindale  
lightfastness 7  
pilling 4

---

*MOSAIC 2 (available in 15 colours)*



**COMPOSITION**

58% PES, 27% WV, 9% PA,  
6% EA

**ABRASION**

100000 martindale  
lightfastness 6 - 7  
pilling 4 - 5

---

*SOLIS (available in 9 colours)*



**COMPOSITION**

60% WO, 30% PES, 2%  
PA, 3% PC

**ABRASION**

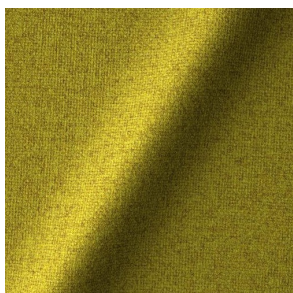
40000 martindale  
lightfastness 5  
pilling 3 - 4

**FIRETEST**

BS5852 part 1 on request  
US. Cal. Bull. 117-2013

---

*TONICA 2 (available in 39 colours)*



**COMPOSITION**

100% WV

**ABRASION**

45000 martindale  
lightfastness 6 - 7  
pilling 4 - 5

**FIRETEST**

US. Cal. Bull. 117-2013

---

*VESPER (available in 8 colours)*



**COMPOSITION**

10% CO, 40% LI, 10% PA,  
10% PES, 30% CV

**ABRASION**

40000 martindale  
lightfastness 5  
pilling 4

**FIRETEST**

BS5852 part 1 on request  
US. Cal. Bull. 117-2013

---