

m o o o i

Hana Armchair

SIMONE BONANNI



Create your own world in your safe space that is the Hana Armchair. Let the softness of the folds lure you in and when you step into that abundance of soft fabric, you're stepping into your own space and away from the hustle and bustle of the world. A moment of contemplation and ultimate relaxation. Mindfulness made tangible in the shape of a chair. The Hana is sculptured around the human body and its need to be pampered, embraced and accommodated for long stretches of time. The generous, cute, subtly curves allow for hours of lounging to daydream, read a book and let your imagination fly.

Detailing

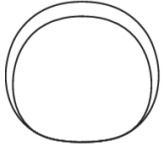


Hana's curves are complimented with carefully thought through folds, with the unique characteristics of all available fabrics in mind.

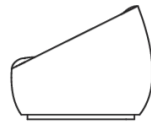
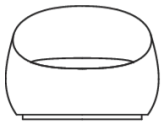
Hana Armchair / Armchair

Dimensions

100cm | 39.4"



92cm | 36.2"



74cm | 29.1"

Product

WIDTH 92cm | 36.2"

HEIGHT 74cm | 29.1"

DEPTH 92cm | 36.2"

DIAMETER 92cm | 36.2"

Packaging

WIDTH 111cm | 43.7"

HEIGHT 80cm | 31.5"

CUBAGE 0.9m³ | 31.67ft³

LENGTH 101cm | 39.8"

WEIGHT 46.5kg | 102.5lbs

Technical

MATERIAL

Metal frame. elastic straps, cut and molded foam.

HEIGHT ARMREST

69cm | 27.2"

SEAT DEPTH

60cm | 23.6"

SEAT HEIGHT

40cm | 15.7"

SEAT WIDTH 2

57cm | 22.4"

HEIGHT ARMREST 2

41cm | 16.1"

SEAT DEPTH 2

42cm | 16.5"

SEAT WIDTH

67cm | 26.4"

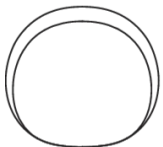
SEATING CAPACITY

1

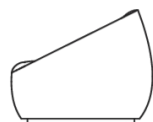
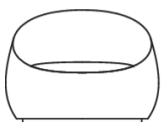
Hana Armchair / Swivel

Dimensions

100cm | 39.4"



92cm | 36.2"



74cm | 29.1"

Product

WIDTH 92cm | 36.2"

HEIGHT 74cm | 29.1"

DEPTH 92cm | 36.2"

DIAMETER 92cm | 36.2"

Packaging

WIDTH 100cm | 39.4"

HEIGHT 70cm | 27.6"

CUBAGE 0.91m³ | 32.14ft³

LENGTH 130cm | 51.2"

WEIGHT 50kg | 110.23lbs

Technical

MATERIAL

Metal frame. elastic straps, cut and molded foam.

HEIGHT ARMREST

69cm | 27.2"

SEAT DEPTH

60cm | 23.6"

SEAT HEIGHT

40cm | 15.7"

SEAT WIDTH 2

57cm | 22.4"

HEIGHT ARMREST 2

41cm | 16.1"

SEAT DEPTH 2

42cm | 16.5"

SEAT WIDTH

67cm | 26.4"

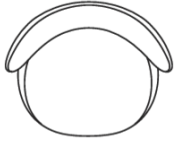
SEATING CAPACITY

1

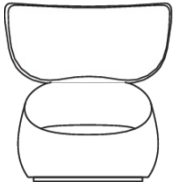
Hana Armchair / Wingback

Dimensions

119cm | 46.9"



96cm | 37.8"



126cm | 49.6"

Product

WIDTH 119cm | 46.9"

HEIGHT 126cm | 49.6"

DEPTH 96cm | 37.8"

Packaging

WIDTH 130cm | 51.2"

HEIGHT 133cm | 52.4"

CUBAGE 1.85m³ | 65.33ft³

LENGTH 107cm | 42.1"

WEIGHT 86.5kg | 190.7lbs

Technical

MATERIAL

Metal frame. elastic straps, cut and molded foam.

HEIGHT ARMREST

69cm | 27.2"

SEAT DEPTH

60cm | 23.6"

SEAT HEIGHT

40cm | 15.7"

SEAT WIDTH 2

57cm | 22.4"

HEIGHT ARMREST 2

41cm | 16.1"

SEAT DEPTH 2

42cm | 16.5"

SEAT WIDTH

67cm | 26.4"

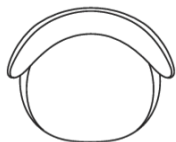
SEATING CAPACITY

1

Hana Armchair / Wingback Swivel

Dimensions

119cm | 46.9"



96cm | 37.8"



126cm | 49.6"

Product

WIDTH 119cm | 46.9"

HEIGHT 126cm | 49.6"

DEPTH 96cm | 37.8"

Packaging

WIDTH 130cm | 51.2"

HEIGHT 133cm | 52.4"

CUBAGE 1.85m³ | 65.33ft³

LENGTH 107cm | 42.1"

WEIGHT 86.5kg | 190.7lbs

Technical

MATERIAL

Metal frame. elastic straps, cut and molded foam.

HEIGHT ARMREST

69cm | 27.2"

SEAT DEPTH

60cm | 23.6"

SEAT HEIGHT

40cm | 15.7"

SEAT WIDTH 2

57cm | 22.4"

HEIGHT ARMREST 2

41cm | 16.1"

SEAT DEPTH 2

42cm | 16.5"

SEAT WIDTH

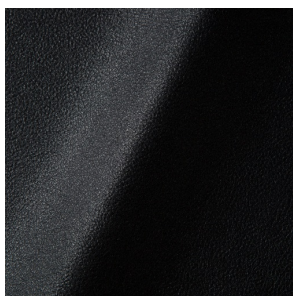
67cm | 26.4"

SEATING CAPACITY

1

Upholstery

ABBRACCI (available in 5 colours)



COMPOSITION

100% PES

ABRASION

30000 martindale
lightfastness 3 - 4
pilling 5

FIRE RESISTANCE

BS 5852 - Ignition source
0 (Cigarette)
BS 5852 - Ignition source
1 (Match flame equivalent)
EN 1021-1 (Cigarette)
EN 1021-2 (Match)
TB 117-2013

BOUCLE (available in 4 colours)



COMPOSITION

43% CO, 14% PA, 12% CV,
3% PES, 28% PAN

ABRASION

20000 martindale
lightfastness 4 - 6
pilling 4 - 5

FIRE RESISTANCE

EN 1021-1 (Cigarette)
EN 1021-2 (Match)

CANVAS 2 (available in 45 colours)



COMPOSITION

90% WO, 10% PA

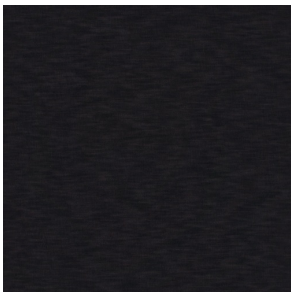
ABRASION

100000 martindale
lightfastness 6
pilling 4

FIRE RESISTANCE

BS 5852 - Ignition source
1 (Match flame equivalent)
BS 5852 - Ignition source
0 (Cigarette)
TB 117-2013
EU Ecolabel

DENIM (available in 3 colours)



COMPOSITION

100% CO

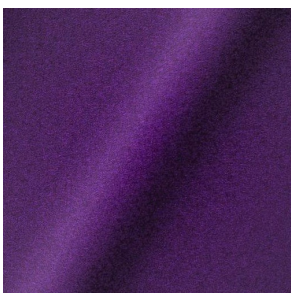
ABRASION

70000 martindale
lightfastness 4
pilling 3 - 4

FIRE RESISTANCE

BS5852 part 1 on request
US. Cal. Bull. 117-2013

DIVINA 3 (available in 56 colours)



COMPOSITION

100% WO

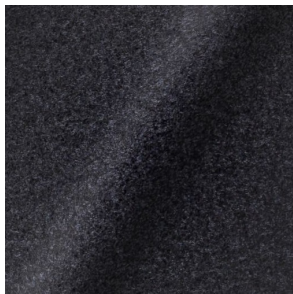
ABRASION

45000 martindale
lightfastness 7
pilling 3

FIRE RESISTANCE

BS 5852 - Ignition source
0 (Cigarette)
BS 5852 - Ignition source
5 (Crib 5)
BS 5852 - Ignition source
1 (Match flame equivalent)
EN 1021-1 (Cigarette)
EN 1021-2 (Match)
TB 117-2013
EU Ecolabel

DIVINA MD (available in 27 colours)



COMPOSITION

100% WO

ABRASION

45000 martindale
lightfastness 6
pilling 3

FIRE RESISTANCE

BS 5852 - Ignition source
0 (Cigarette)
BS 5852 - Ignition source
5 (Crib 5)
BS 5852 - Ignition source
1 (Match flame equivalent)
EN 1021-1 (Cigarette)
EN 1021-2 (Match)
EU Ecolabel

DIVINA MELANGE 3 (available in 60 colours)



COMPOSITION

100% WO

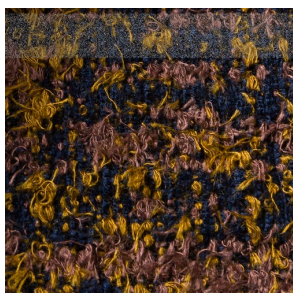
ABRASION

45000 martindale
lightfastness 6 - 7
pilling 3

FIRE RESISTANCE

BS 5852 - Ignition source
0 (Cigarette)
BS 5852 - Ignition source
5 (Crib 5)
BS 5852 - Ignition source
1 (Match flame equivalent)
EN 1021-1 (Cigarette)
EN 1021-2 (Match)
TB 117-2013
EU Ecolabel

Bearded Leopard (available in 3 colours)



COMPOSITION

77% CV, 15% PES, 7% CO,
1% PA

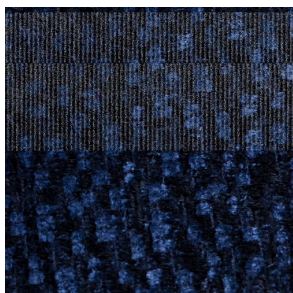
ABRASION

15000 martindale
lightfastness 4 - 6
pilling 4

FIRE RESISTANCE

BS5852 part 1 on request
US. Cal. Bull. 117-2013

Calligraphy Bird (available in 4 colours)



COMPOSITION

64% CV, 21% PES, 15%
CO

ABRASION

50000 martindale
lightfastness 4 - 6
pilling 5

FIRE RESISTANCE

BS5852 part 1 on request
US. Cal. Bull. 117-2013

Dodo Pavone (available in 3 colours)



COMPOSITION

12% CO, 88% PES

ABRASION

40000 martindale
lightfastness 5
pilling 4 - 5

FIRE RESISTANCE

BS5852 part 1 on request
US. Cal. Bull. 117-2013

Menagerie of Extinct Animals (available in 2 colours)



COMPOSITION

100% PES

ABRASION

50000 martindale
lightfastness 4 - 6
pilling 5

FIRE RESISTANCE

BS5852 part 1 on request
US. Cal. Bull. 117-2013

Rendezvous Tokyo Blue (available in 1 colours)



COMPOSITION

100% PES

ABRASION

50000 martindale
lightfastness 4 - 6
pilling 5

FIRE RESISTANCE

BS5852 part 1 on request
US. Cal. Bull. 117-2013

Blushing Sloth Melange Mohair (available in 1 colours)



COMPOSITION

85% WV, 15% WM

ABRASION

15000 martindale
lightfastness 4 - 6
pilling 2 - 3

FIRE RESISTANCE

BS5852 part 1 on request
US. Cal. Bull. 117-2013

FIORD (available in 27 colours)



COMPOSITION

92% WV, 8% PA

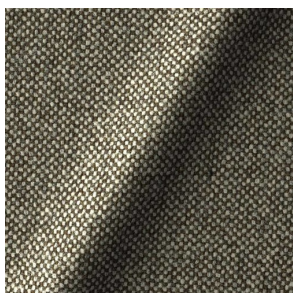
ABRASION

60000 martindale
lightfastness 6
pilling 4 - 5

FIRE RESISTANCE

EN 1021-1 (Cigarette)
EN 1021-2 (Match)
BS 5852 - Ignition source
0 (Cigarette)
BS 5852 - Ignition source
1 (Match flame equivalent)

HALLINGDAL 65 (available in 58 colours)



COMPOSITION

30% CV, 70% WV

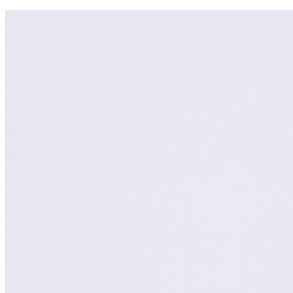
ABRASION

100000 martindale
lightfastness 7
pilling 3 - 4

FIRE RESISTANCE

BS 5852 - Ignition source
0 (Cigarette)
BS 5852 - Ignition source
5 (Crib 5)
BS 5852 - Ignition source
1 (Match flame equivalent)
EN 1021-1 (Cigarette)
EN 1021-2 (Match)
TB 117-2013
EU Ecolabel

HARALD 3 (available in 30 colours)



COMPOSITION

100% CO

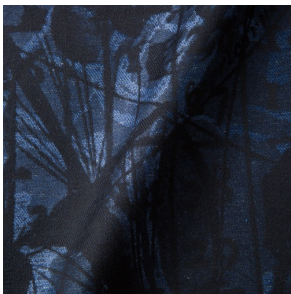
ABRASION

100000 martindale
lightfastness 5
pilling 4 - 5

FIRE RESISTANCE

EN 1021-1 (Cigarette)

JACQUARD, ANDAZ (available in 1 colours)



COMPOSITION

34% CO, 30% CV, 24%
LI, 12% PA

ABRASION

25000 martindale
lightfastness 4 - 6
pilling 4 - 5

FIRE RESISTANCE

BS 5852 - Ignition source
0 (Cigarette)
BS 5852 - Ignition source
1 (Match flame equivalent)
EN 1021-1 (Cigarette)
EN 1021-2 (Match)

JACQUARD, FRESC (available in 1 colours)



COMPOSITION

52% CV, 38% CO, 10% LI

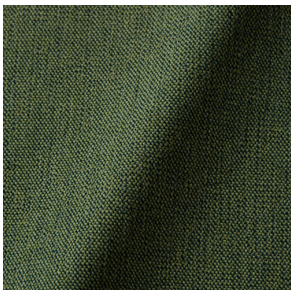
ABRASION

15000 martindale
lightfastness 3 - 4
pilling 2 - 3

FIRE RESISTANCE

BS 5852 - Ignition source
0 (Cigarette)
EN 1021-1 (Cigarette)
EN 1021-2 (Match)

JUSTO (available in 10 colours)



COMPOSITION

15% CO, 35% PC, 10% PA,
40% CV

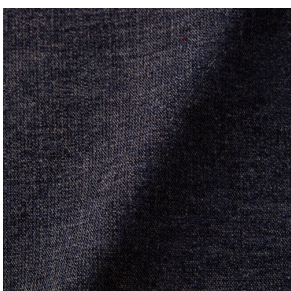
ABRASION

50000 martindale
lightfastness 5
pilling 4

FIRE RESISTANCE

EN 1021-1 (Cigarette)
EN 1021-2 (Match)
TB 117-2013

LISCIO (available in 11 colours)



COMPOSITION

35% WO, 35% CV, 21%
CO, 9% PA

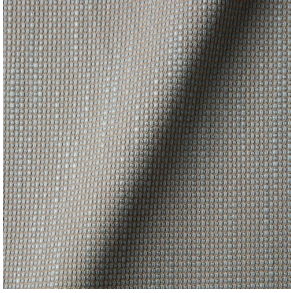
ABRASION

30000 martindale
lightfastness 4 - 6
pilling 4

FIRE RESISTANCE

TB 117-2013

MACCHEDIL GREZZO (available in 10 colours)



COMPOSITION

47% CO, 20% CV, 18%
PA, 8% LI, 5% PC

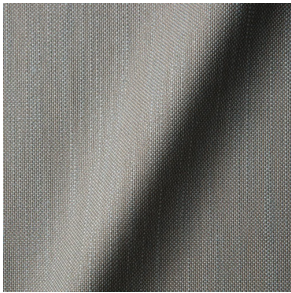
ABRASION

15000 martindale
lightfastness 3 - 5
pilling 4 - 5

FIRE RESISTANCE

BS5852 part 1 on request

MACCHEDIL SOTTILE (available in 10 colours)



COMPOSITION

49% CV, 24% PES, 21% LI,
6% CO

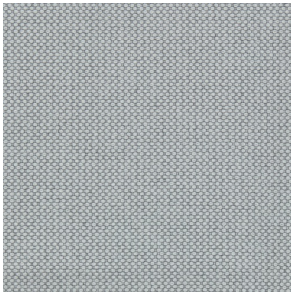
ABRASION

20000 martindale
lightfastness 3 - 5
pilling 2 - 3

FIRE RESISTANCE

BS5852 part 1 on request

MERIT (available in 43 colours)



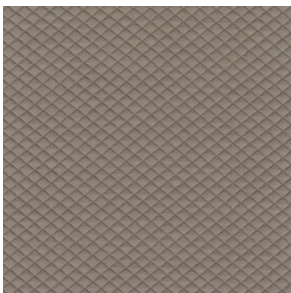
COMPOSITION

24% PES, 76%

ABRASION

85000 martindale
lightfastness 7
pilling 4

MOSAIC 2 (available in 15 colours)



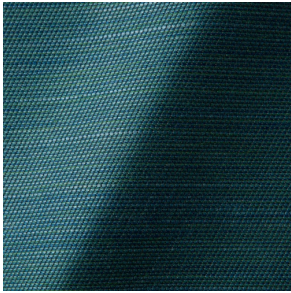
COMPOSITION

58% PES, 27% WV, 9% PA,
6% EA

ABRASION

100000 martindale
lightfastness 6 - 7
pilling 4 - 5

ORAY RAY (available in 15 colours)



COMPOSITION

39% LI, 38% CV, 15% PE,
8% CO

ABRASION

30000 martindale
pilling 4 - 5

FIRE RESISTANCE

BS 5852 - Ignition source
0 (Cigarette)
BS 5852 - Ignition source
1 (Match flame equivalent)
TB 117-2013

ORAY RONAN (available in 5 colours)



COMPOSITION

39% LI, 38% CV, 15% PE,
8% CO

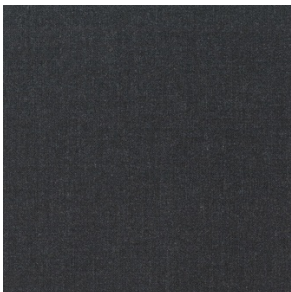
ABRASION

30000 martindale
pilling 4 - 5

FIRE RESISTANCE

BS 5852 - Ignition source
0 (Cigarette)
BS 5852 - Ignition source
1 (Match flame equivalent)
TB 117-2013

REMIX 3 (available in 53 colours)



COMPOSITION

10% PA, 90% WV

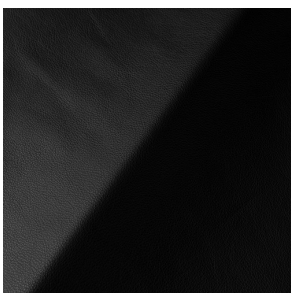
ABRASION

100000 martindale
lightfastness 5
pilling 4

FIRE RESISTANCE

BS5852 part 1
US. Cal. Bull. 117-2013

SAVANNE (available in 3 colours)



FIRE RESISTANCE

EN 1021-1 (Cigarette)
EN 1021-2 (Match)
TB 117-2013
OEKO-TEX

SHADE (available in 6 colours)



ABRASION

lightfastness 3 - 4

FIRE RESISTANCE

EN 1021-1 (Cigarette)
EN 1021-2 (Match)
TB 117-2013

SOLIS (available in 9 colours)



COMPOSITION

60% WO, 30% PES, 2%
PA, 3% PC

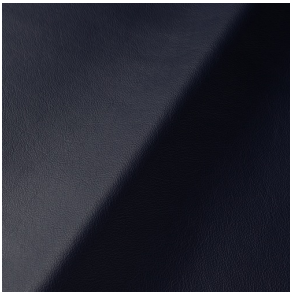
ABRASION

40000 martindale
lightfastness 5
pilling 3 - 4

FIRE RESISTANCE

EN 1021-1 (Cigarette)
EN 1021-2 (Match)
TB 117-2013

SPECTRUM (available in 11 colours)



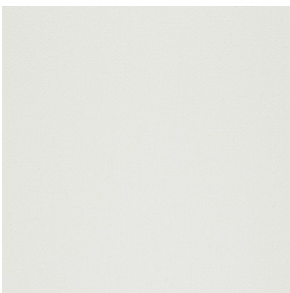
ABRASION

lightfastness 6 - 6

FIRE RESISTANCE

EN 1021-1 (Cigarette)
EN 1021-2 (Match)
TB 117-2013
OEKO-TEX

STEELCUT 2 (available in 37 colours)



COMPOSITION

90% WV, 10% PA

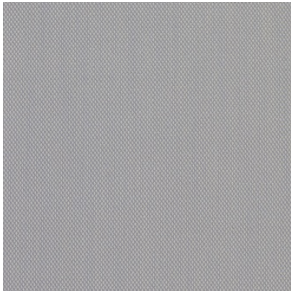
ABRASION

100000 martindale
lightfastness 6
pilling 3 - 4

FIRE RESISTANCE

BS 5852 - Ignition source
0 (Cigarette)
BS 5852 - Ignition source
1 (Match flame equivalent)
EN 1021-1 (Cigarette)
EN 1021-2 (Match)
TB 117-2013
EU Ecolabel

STEELCUT TRIO 3 (available in 54 colours)



COMPOSITION

90% WV, 10% PA

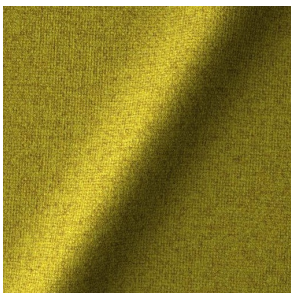
ABRASION

100000 martindale
lightfastness 5
pilling 4

FIRE RESISTANCE

BS 5852 - Ignition source
0 (Cigarette)
BS 5852 - Ignition source
1 (Match flame equivalent)
EN 1021-1 (Cigarette)
EN 1021-2 (Match)
EU Ecolabel

TONICA 2 (available in 39 colours)



COMPOSITION

100% WV

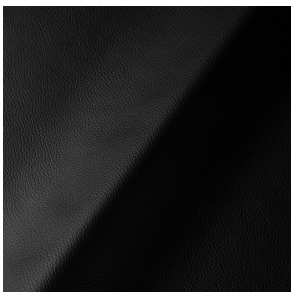
ABRASION

45000 martindale
lightfastness 6 - 7
pilling 4 - 5

FIRE RESISTANCE

EN 1021-1 (Cigarette)
EN 1021-2 (Match)

ULTRA (available in 6 colours)



ABRASION

lightfastness 6 - 7

FIRE RESISTANCE

EN 1021-1 (Cigarette)
EN 1021-2 (Match)
TB 117-2013
ANSI/BIFMA M7.1 (Total
Volatile Organic
Compounds)

VESPER (available in 8 colours)



COMPOSITION

10% CO, 40% LI, 10% PA,
10% PES, 30% CV

ABRASION

40000 martindale
lightfastness 5
pilling 4

FIRE RESISTANCE

EN 1021-1 (Cigarette)
EN 1021-2 (Match)
TB 117-2013