

# Gamma 130 Table

Design Roda studio

Technical Information



GAMMA is where simplicity, clarity and elegance exalt the beauty of the materials and their combinations. The elementary lines of this table are a pragmatic answer to a demand for functionality and variety. Its shape is given by slender metal legs connected to one another by a cross structure, and a circular top in two sizes, available in white Carrara marble, Farsena stone, Luna stone, stoneware or teak-wood slats.

## TECHNICAL INFORMATION

### DESCRIPTION

Table for outdoor use.

### STRUCTURE

Powder coated stainless steel

### TOP

Teak; stone; gres.

### WEIGHT

Structure + teak top	42 kg
Structure + stone top	84 kg
Structure + gres top	60 kg

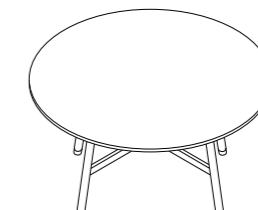
### STORAGE COVER

Available.

### DIMENSION

Ø 130 cm  
H structure 73 cm, H top gres/stone 75 cm, H top teak 77 cm

Ø 51" <sup>3</sup>/<sub>4</sub>  
H structure 28" <sup>3</sup>/<sub>4</sub>, H top stone/gres 29" <sup>1</sup>/<sub>2</sub>, H top teak 30" <sup>3</sup>/<sub>4</sub>



## Materials

### METAL



Smoke

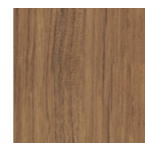
Milk

### TOP/GRES



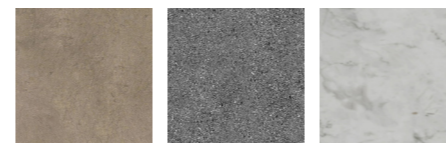
Natural

### TOP/TEAK



Teak

### TOP/STONE



Farsena

Luna

Carrara

# Gamma 160 Table

Design Roda studio

Technical Information



GAMMA is where simplicity, clarity and elegance exalt the beauty of the materials and their combinations. The elementary lines of this table are a pragmatic answer to a demand for functionality and variety. Its shape is given by slender metal legs connected to one another by a cross structure, and a circular top in two sizes, available in white Carrara marble, Farsena stone, Luna stone, stoneware or teak-wood slats.

## TECHNICAL INFORMATION

### DESCRIPTION

Table for outdoor use.

### STRUCTURE

Powder coated stainless steel

### TOP

Teak; gres.

### WEIGHT

Structure + teak top	52 kg
Structure + stone top	115 kg
Structure + gres top	79 kg

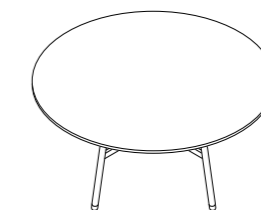
### STORAGE COVER

Available.

### DIMENSION

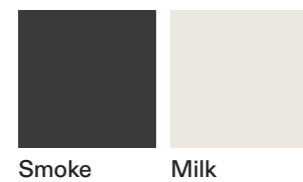
Ø 160 cm  
H structure 73 cm, H top gres 75 cm, H top teak 77 cm

Ø 63"  
H structure 28" <sup>3</sup>/<sub>4</sub>, H top gres 29" <sup>1</sup>/<sub>2</sub>, H top teak 30" <sup>1</sup>/<sub>4</sub>

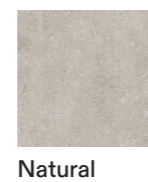


## Materials

### METAL



### TOP/GRES



### TOP/TEAK

