

Eolias,
Outdoor Salina dining
armchair
by Antonio Citterio

kettal

Outdoor Salina dining armchair

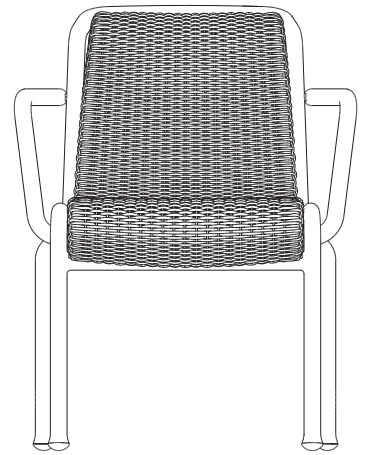
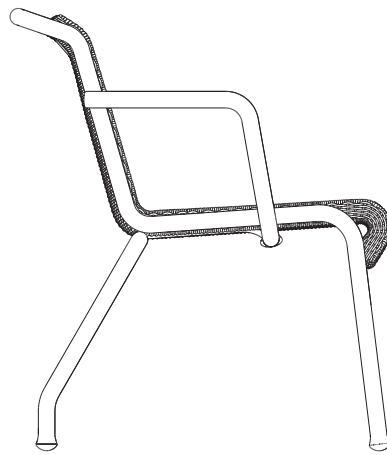
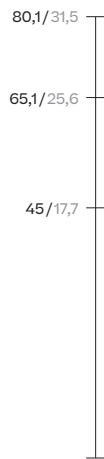
Designer
Antonio Citterio

Collection
Eolias

Reference
KSB200600

1/4

cm/inch



cm/inch

70/27,6

63/24,8

The Eolias collection by Kettal was born with the aim of creating versatile products, that work in both outdoor and indoor environments. The focus is on sustainability, thanks to the use of natural and synthetic materials such as aluminium and wicker.



kettal

Outdoor Salina dining armchair

Designer
Antonio Citterio

Collection
Eolias

Reference
KSB200600

2/4

Materials

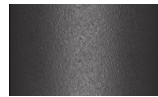
Aluminium
Antioxy, Heavy Load, Resistant
En-1421, Kettalize-It, Anti-
Scratch, Easy Clean,
Flame Retardant M1, Eco Friendly
Ecoembes Recycling Process

Fabric
Heavy Load 100.000 Cycles,
Heavy Load Resistant
1000 Decitex, Kettalize-It,
Resist U.v. En-581-4, Easy Clean,
Abrasion, Resistance 30.000
Cycles, Quickdry

Bucket synthetic fiber braided

Structure Colour Options

Terrain Coatings



Slate Stone
01C



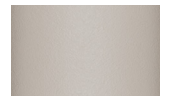
Mysty Smoke
02C



Ash
03C



Bone
04C



Tuff
05C



Wet Stone
06C



Sand Dune
07C



Dry Clay
08C



Arabica
09C



Sepia
19C



Rose Canyon
16C



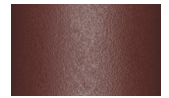
Blossom
20C



Ruby Dust
18C



Sunset Glow
17C



Terrarosa
15C



Terracota
14C



Amber
13C



Ginger Root
12C



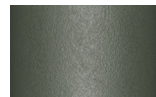
Desert Storm
11C



African Savannah
10C



Spring Meadow
28C



Kombu
29C



Forest Stream
27C



Sea Moss
26C



Glacier Ice
25C



Polar Sky
24C



Nightfall
23C



Indigo
22C



Wild Lupin
21C



Galena
33C



Bronze
30C



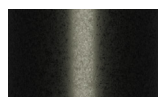
Corten
31C



Manganese
32C

Structure Colour Options

Terrain Lustre



Noir d'Ivoire
CH2

Outdoor Salina dining armchair

Designer
Antonio Citterio

Collection
Eolias

Reference
KSB200600

3/4

Other Characteristics

 Stackable x2

Maintenance

Clean with mild soap using sponge or cloth. Be gentle while cleaning, do not scrub aggressively the fabric. Once cleaned please make sure you remove soap excess.

In case of aggressive stains clean with diluted household bleach.

Clean stains promptly. The longer it remains, more difficult will be to remove.

Once cleaned the fabric steam iron the fabric. Just use steam, be carefull NOT placing the iron directly in the fabric it will get damage.

Seat/Back Cushion

Terrain Laminate Elements



Charcoal
01L



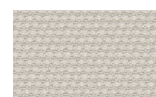
Cumulus
02L



Fog
09L



Porous Grey
08L



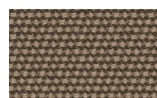
Snowcap
03L



Moonstone
07L



Karakum
06L



Cambium
12L



Raku
11L



Clove
13L



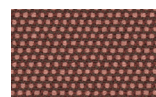
Desert Rose
14L



Pink Salt
15L



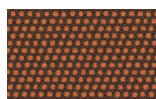
Pacific Dawn
16L



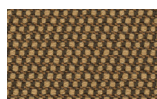
Acer
17L



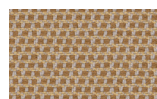
Firetail
18L



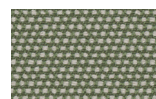
Glowing Ember
19L



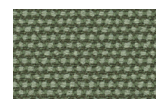
Tiger Eye
05L



Goldrush
04L



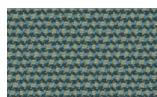
Sea Heart
22L



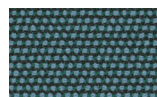
Heath
21L



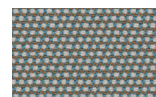
Peppercorn
20L



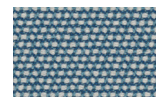
Rock Pool
23L



Tropic
24L



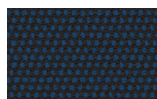
Skylark
25L



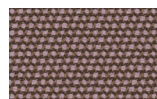
Nautica
26L



Blue Reef
27L



Cosmos
28L



Amethyst
29L

Outdoor Salina dining armchair

Designer
Antonio Citterio

Collection
Eolias

Reference
KSB200600

4/4

Seat/Back Cushion

Tonale Lino



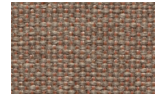
White Chia
61L-61T



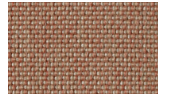
Fennel
62L-62T



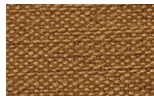
Elwendia
63L-63T



Brown Mustard
64L-64T



Kampot
65L-65T



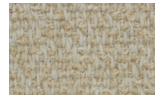
Fenugreek
66L-66T

Seat/Back Cushion

Tonale Boucle



White Poppy
81L-81T



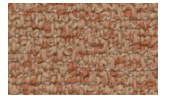
Sesame
82L-82T



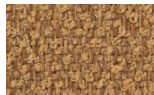
Anise
83L-83T



Dill
84L-84T



Allspice Jamaica
85L-85T



Birds Foot
86L-86T

Piping Colour Options

Piping



Rosemary
MR1



Whole Clove
MR2



Mustard Grain
MR3



Sea Salt
MR4



Ground Pepper
MR5



Black Salt
MR6



Poppy Seed
MR7



Rose Harissa
MR8