

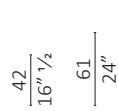
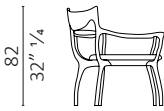
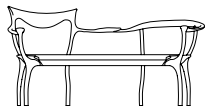
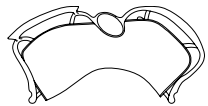
D.R.D.P. design Roberto Lazzeroni

Caratteristiche tecniche - Divanetto in massello di noce americano con seduta in multistrato imbottita. Vassoio in vetro sabbiato con finitura argento.

Technical features - Two seater in solid American walnut with seat in upholstered plywood. Tray with silver finished sandblasted glass top.

Nota - Costo aggiuntivo per finitura gommalacca.

Note - Additional cost for shellac finish.



165
65"

80
31" 1/2

c.o.m. (l.mt.1,40/sq.mt.2,50)

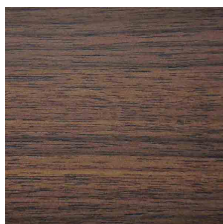
volume m³ 1,958 - **kg.** 60

Finiture / Finiture

Legno Noce / Wood Walnut



noce
walnut



noce dark
walnut dark



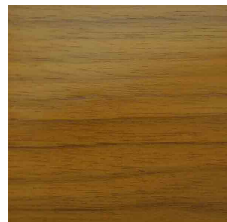
noce moka
walnut moka



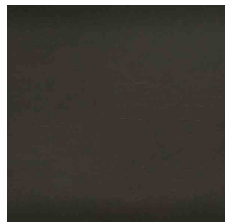
noce brown
walnut brown

Finiture / Finiture

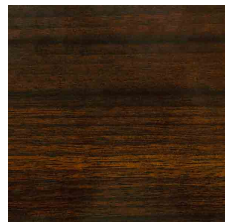
Legno Gommalacca / Wood Shellac



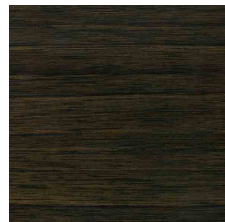
Noce Am. gommalacca
naturale
*Am. walnut natural
shellac*



Noce Am. gommalacca
nera
Am. walnut dark shellac



Noce Am. olio iris
Am. walnut Iris oil



Noce Am. olio nero
Am. walnut black oil

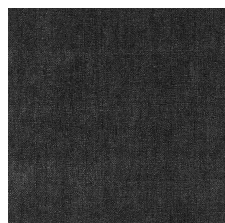
Tessuto Velluti e Ciniglie / Fabric Velvet and Chenille



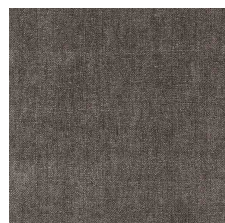
Belsuede-029



Belsuede-032



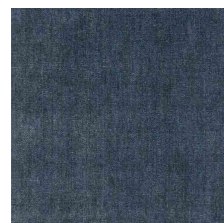
Belsuede-015



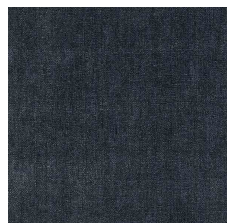
Belsuede-014



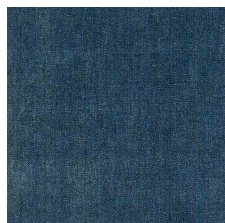
Belsuede-01



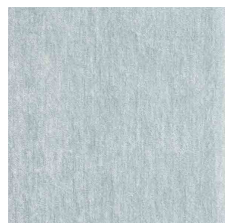
Belsuede-036



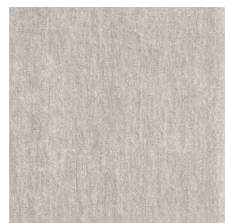
Belsuede-016



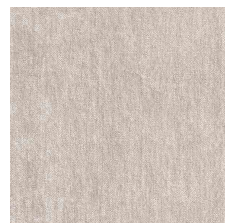
Belsuede-017



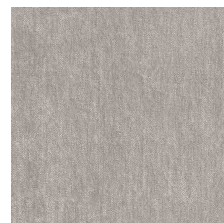
Belsuede-040



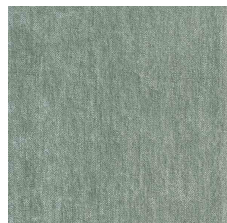
Belesuede-034



Belsuede-010



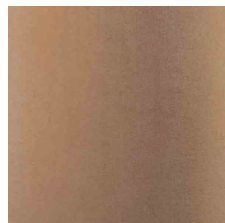
Belsuede-011



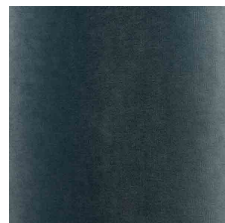
Belsuede-012



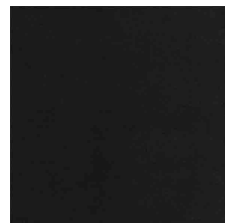
Belsuede-039



Amazonie-041



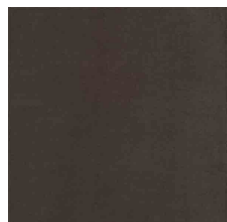
Amazonie-042



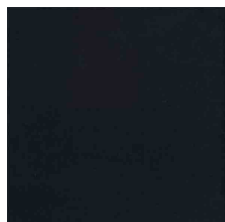
Harald 3 - 283



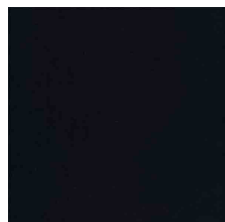
Harald 3 - 143



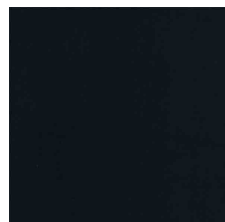
Harald 3 - 242



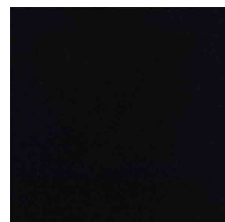
Harald 3 - 182



Harald 3 - 792



Harald 3 - 982



Harald 3 - 192

Finiture / Finiture

Tessuto / Fabric Bouclé



Verone Creme



Monza 00



Mies-005



Monza 09



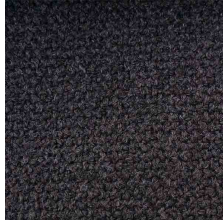
Mies-004



Monza 07



Monza 97



Monza 84



Monza 58



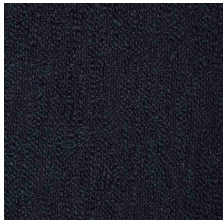
Monza 27



Monza 48



Monza 45



Verone Nuit



Mies-020

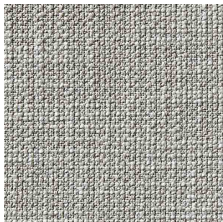


Monza 88

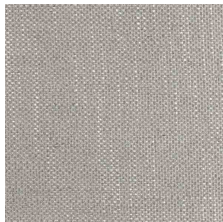


Mies-008

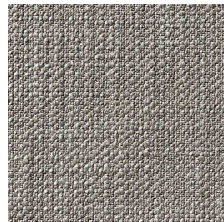
Tessuto Vari / Fabric Various



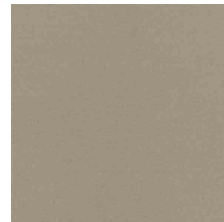
Gypsy-892



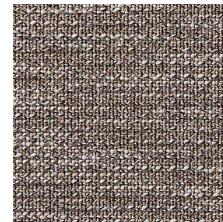
Flair-108



Gypsy-895



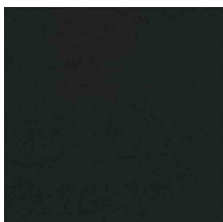
Divina 3 224



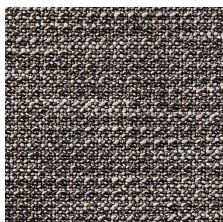
Oxford-893



Grisaille-004



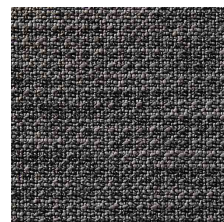
Divina 3-191



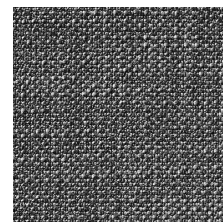
Oxford-897



Flair-121



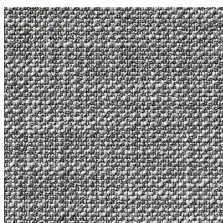
Oxford-999



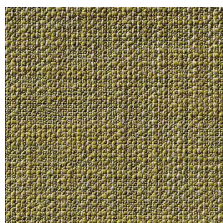
Gypsy-997



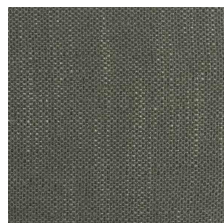
Flair-155



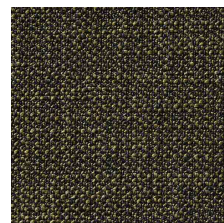
Gypsy-995



Gypsy-184



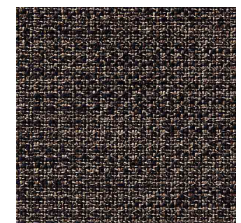
Flair-130



Gypsy-799



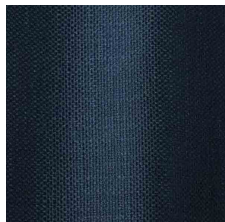
Flair 166



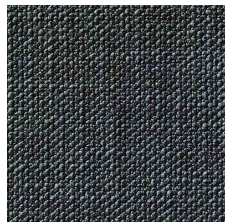
Oxford-889

Finiture / Finiture

Tessuto Vari / Fabric Various

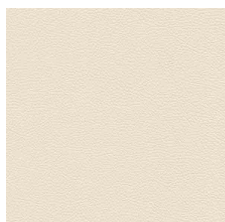


Flair-164

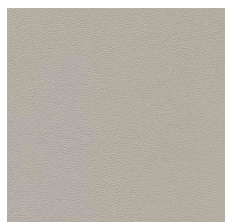


Gypsy-699

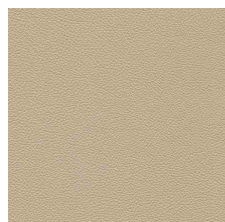
Pelle / Leather Color Sphere PF



SC 06 Calicot



SC 23 Tortora



SC 32 Caolino



SC 51 Panna



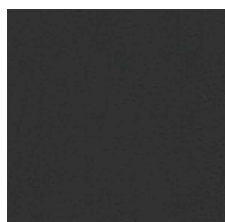
SC 31 Quarzo Fumè



SC 34 Maggese



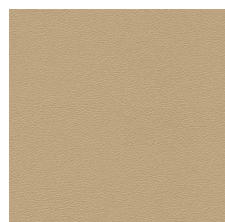
SC 26 Topo



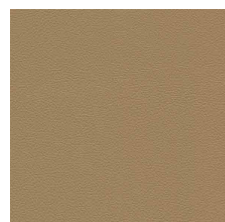
SC 20 Inchiostro



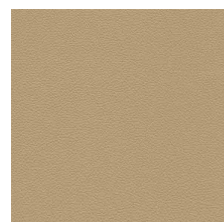
SC 21 Amianto



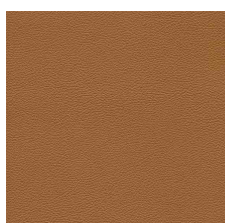
SC 53 Creta



SC 55 Camel Hair



SC 52 Daino



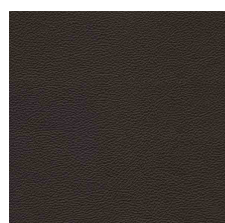
SC 66 India



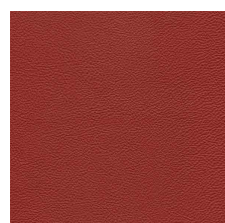
SC 59 Noce di Pecan



SC 80 Bruno Havana



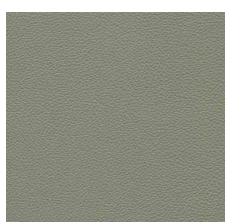
SC 29 Ardesia



SC 148 Lacca



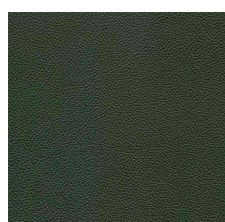
SC 146 Coccio Pesto



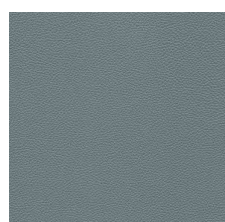
SC 173 Glauco



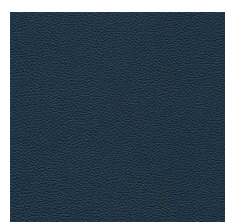
SC 177 Limo



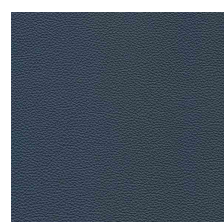
SC 178 Alpi



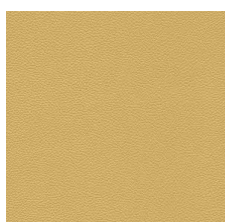
SC 254 Steel Blue



SC 278 Atlantic Blue



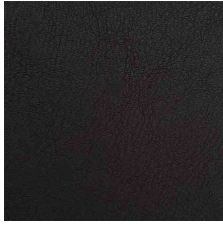
SC 279 Alchemy



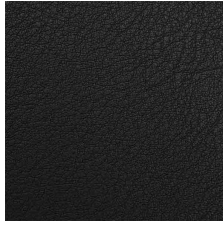
SC 133 Paglierino

Finiture / *Finiture*

Pelle naturale / *Natural leather Acquario*



201 Testa di moro



202 Antracite



204 Fango

Pelle naturale / *Natural leather Nabuk*



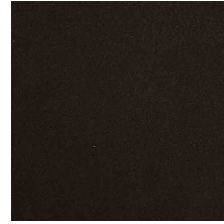
Nabuk Grigio



Nabuk Conchiglia



Nabuk Seppia



Nabuk Marrone Scuro