

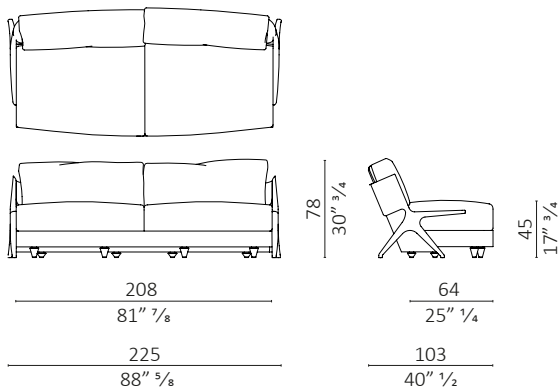
## DC 225/290 design Vincenzo De Cotiis

**Caratteristiche tecniche** - Divano realizzato in massello di noce americano. Scocca in multistrato di pioppo rivestita in gomma di varie densità. Cuscini seduta in gomma con uno strato di piuma e cuscini schienale in piuma.

**Technical features** - Sofa made in solid American walnut. Body in poplar plywood covered in polyurethan foam of various desities; seat cushions in foam with upper layer in down and back cushions in down.

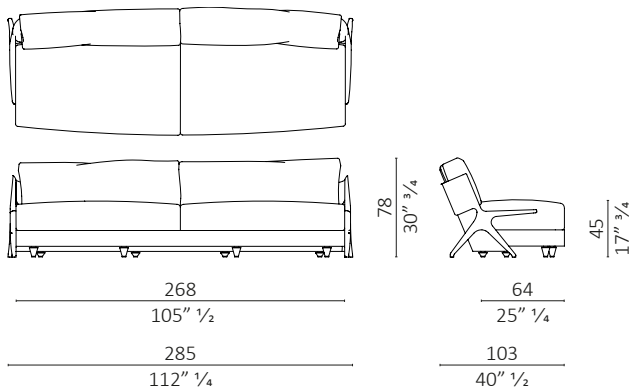


### DC225 2 cuscini / 2 cushions



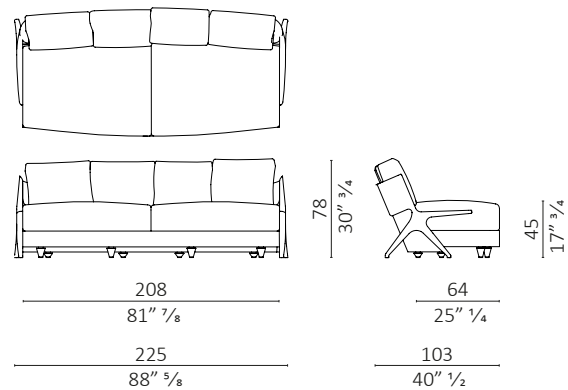
**c.o.m.** (l.mt.10,00/sq.mt.20,00)  
**volume m<sup>3</sup>** 3,800 - **kg.** 151

### DC 290 2 cuscini / 2 cushions



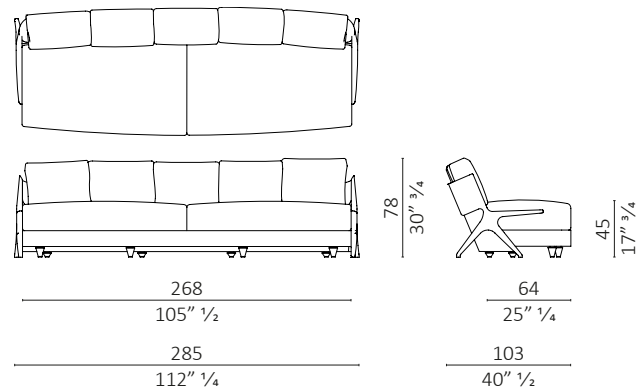
**c.o.m.** (l.mt.14,00/sq.mt.34,00)  
**volume m<sup>3</sup>** 4,630 - **kg.** 211,5

### DC225 4 cuscini / 4 cushions



**volume m<sup>3</sup>** 3,800 - **kg.** 151

### DC 290 5 cuscini / 5 cushions



**volume m<sup>3</sup>** 4,630 - **kg.** 211,5

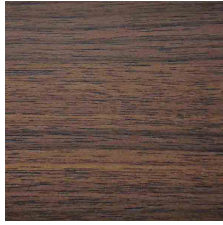
## Finiture / Finiture

### Legno Noce / Wood Walnut

---



noce  
walnut



noce dark  
walnut dark



noce moka  
walnut moka



noce brown  
walnut brown

### Tessuto Velluti e Ciniglie / Fabric Velvet and Chenille

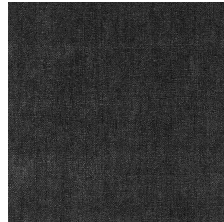
---



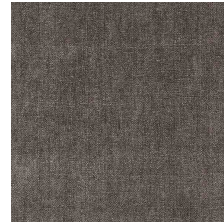
Belsuede-029



Belsuede-032



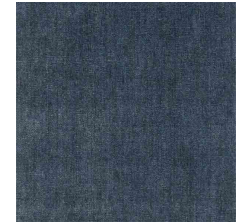
Belsuede-015



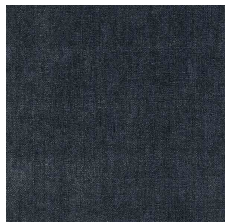
Belsuede-014



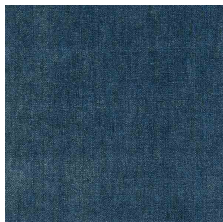
Belsuede-01



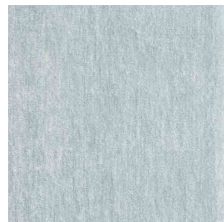
Belsuede-036



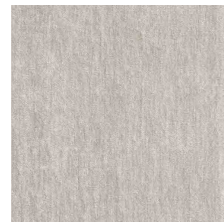
Belsuede-016



Belsuede-017



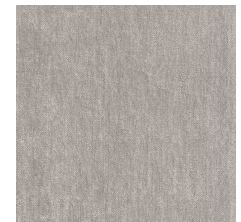
Belsuede-040



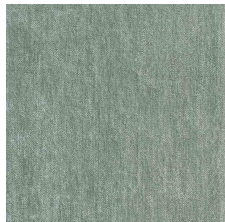
Belsuede-034



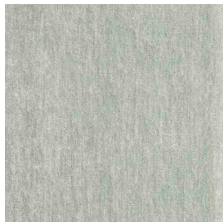
Belsuede-010



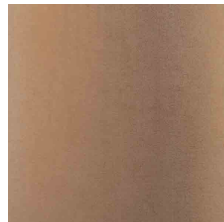
Belsuede-011



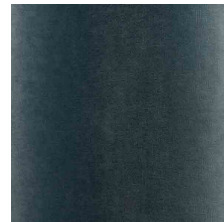
Belsuede-012



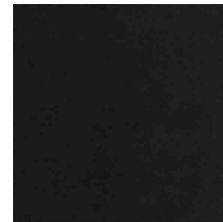
Belsuede-039



Amazonie-041



Amazonie-042



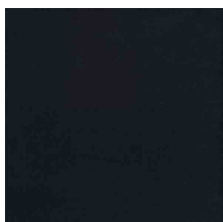
Harald 3 - 283



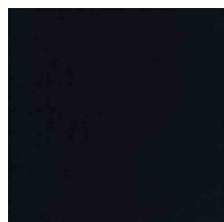
Harald 3 - 143



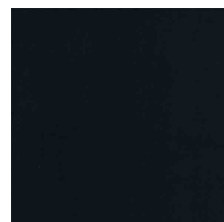
Harald 3 - 242



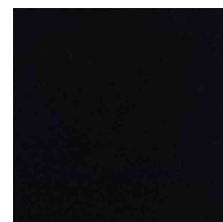
Harald 3 - 182



Harald 3 - 792



Harald 3 - 982



Harald 3 - 192

## Finiture / Finiture

### Tessuto / Fabric Bouclé

---



Verone Creme



Monza 00



Mies-005



Monza 09



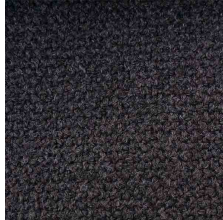
Mies-004



Monza 07



Monza 97



Monza 84



Monza 58



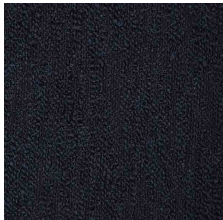
Monza 27



Monza 48



Monza 45



Verone Nuit



Mies-020



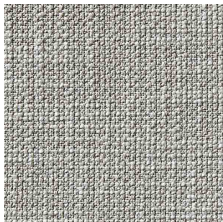
Monza 88



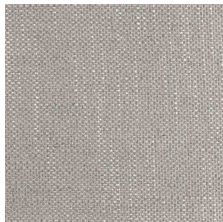
Mies-008

### Tessuto Vari / Fabric Various

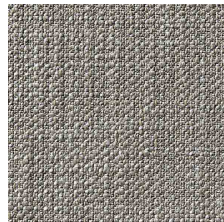
---



Gypsy-892



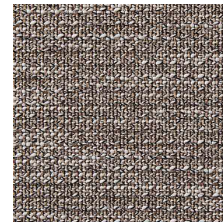
Flair-108



Gypsy-895



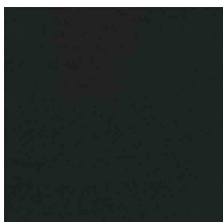
Divina 3 224



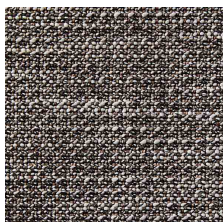
Oxford-893



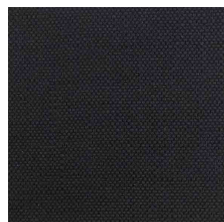
Grisaille-004



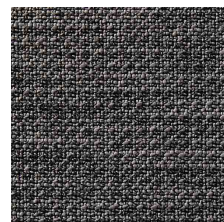
Divina 3-191



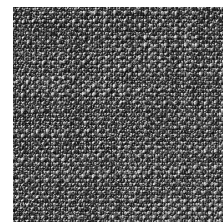
Oxford-897



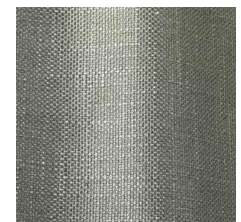
Flair-121



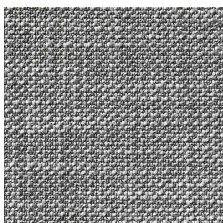
Oxford-999



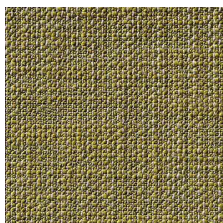
Gypsy-997



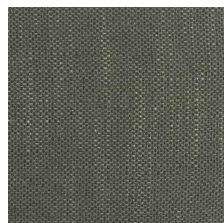
Flair-155



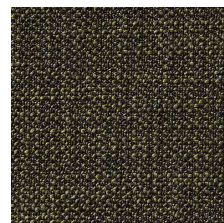
Gypsy-995



Gypsy-184



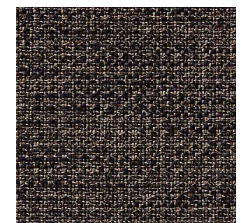
Flair-130



Gypsy-799



Flair 166

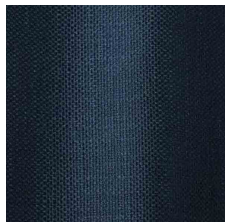


Oxford-889

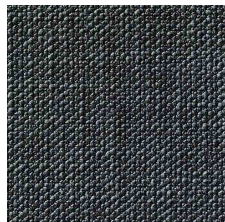
## Finiture / Finiture

### Tessuto Vari / Fabric Various

---



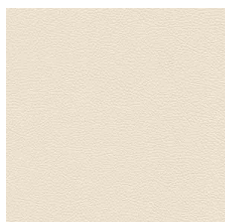
Flair-164



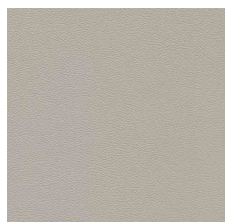
Gypsy-699

### Pelle / Leather Color Sphere PF

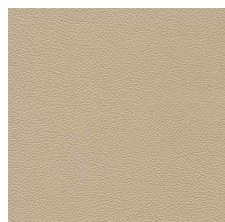
---



SC 06 Calicot



SC 23 Tortora



SC 32 Caolino



SC 51 Panna



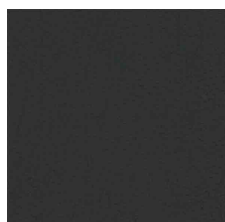
SC 31 Quarzo Fumè



SC 34 Maggese



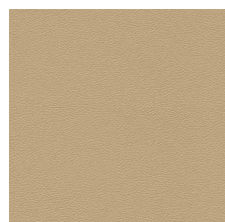
SC 26 Topo



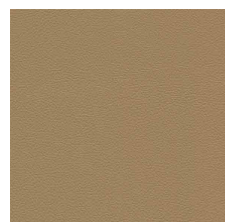
SC 20 Inchiostro



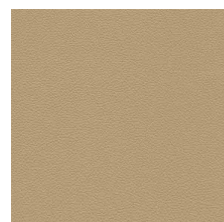
SC 21 Amianto



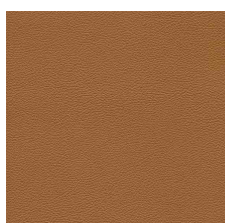
SC 53 Creta



SC 55 Camel Hair



SC 52 Daino



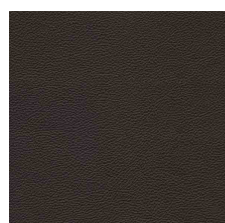
SC 66 India



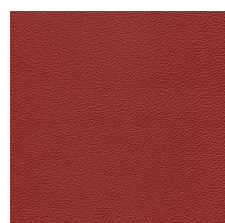
SC 59 Noce di Pecan



SC 80 Bruno Havana



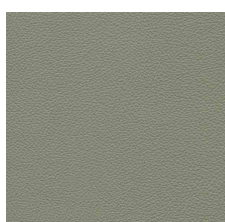
SC 29 Ardesia



SC 148 Lacca



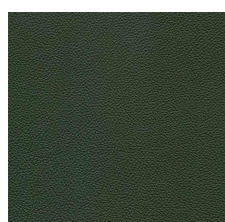
SC 146 Coccio Pesto



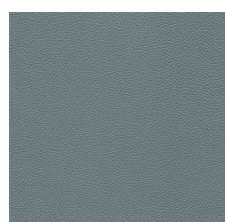
SC 173 Glauco



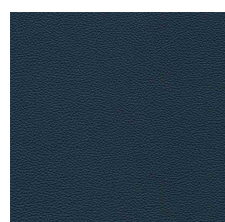
SC 177 Limo



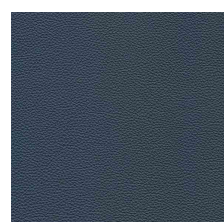
SC 178 Alpi



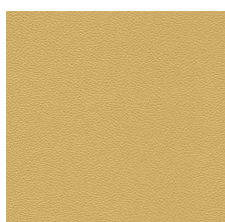
SC 254 Steel Blue



SC 278 Atlantic Blue



SC 279 Alchemy

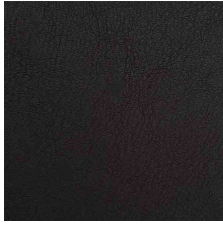


SC 133 Paglierino

## Finiture / *Finiture*

### Pelle naturale / *Natural leather Acquario*

---



201 Testa di moro



202 Antracite



204 Fango

### Pelle naturale / *Natural leather Nabuk*

---



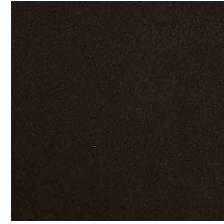
Nabuk Grigio



Nabuk Conchiglia



Nabuk Seppia



Nabuk Marrone Scuro