

m o o o i

## Cocktail Chair

MARCEL WANDERS STUDIO



Mix the lightness of your favourite cocktail with the weight of Dutch historical heritage, while comfortably lounging in Marcel Wanders' Cocktail chair. Its straightforward design is luxuriously enveloped in a stylish signature woven textile, Heritage for cocktail. Waiting for your appointment at the bar, sitting on the Cocktail chair, is pure pleasure. Relax and enjoy your drink while taking in the vibe around you. Beware: if your date is running late you might not even notice...

---

### *Detailing*



This elegant armchair, with just the right proportions, can be personalised thanks to the wide choice of the Moooi fabric collection.

# Cocktail Chair / Chair

## Dimensions

74cm | 29.1"



73cm | 28.7"



38cm | 15"



69cm | 27.2"

## Product

**WIDTH** 74cm | 29.1"

**HEIGHT** 69cm | 27.2"

**DEPTH** 73cm | 28.7"

## Packaging

**WIDTH** 65cm | 25.6"

**HEIGHT** 82cm | 32.3"

**CUBAGE** 0.32m<sup>3</sup> | 11.29ft<sup>3</sup>

**LENGTH** 60cm | 23.6"

**WEIGHT** 15kg | 33.07lbs

## Technical

### ADDITIONAL

Legs available in two stain colours: Cinnamon Stained, White Wash Stained

### MATERIAL

Moulded foam on steel frame with wooden legs.

### SEAT DEPTH

51cm | 20.1"

### SEAT HEIGHT

37cm | 14.6"

### SEAT WIDTH 2

70cm | 27.6"

### SEAT DEPTH 2

46cm | 18.1"

### SEAT WIDTH

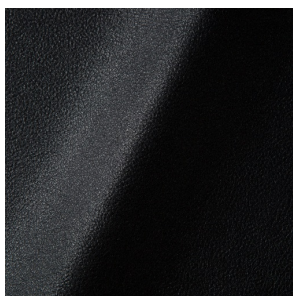
73cm | 28.7"

### SEATING CAPACITY

1

## Upholstery

*ABBRACCI (available in 5 colours)*



### COMPOSITION

100% PES

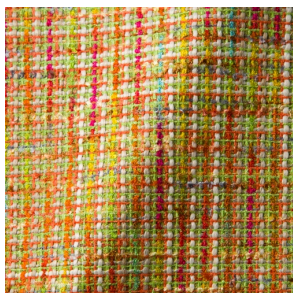
### ABRASION

30000 martindale  
lightfastness 3 - 4  
pilling 5

### FIRE RESISTANCE

BS 5852 - Ignition source  
0 (Cigarette)  
BS 5852 - Ignition source  
1 (Match flame equivalent)  
EN 1021-1 (Cigarette)  
EN 1021-2 (Match)  
TB 117-2013

*BOUCLE (available in 4 colours)*



**COMPOSITION**

43% CO, 14% PA, 12% CV,  
3% PES, 28% PAN

**ABRASION**

20000 martindale  
lightfastness 4 - 6  
pilling 4 - 5

**FIRE RESISTANCE**

EN 1021-1 (Cigarette)  
EN 1021-2 (Match)

---

*CANVAS 2 (available in 45 colours)*



**COMPOSITION**

90% WO, 10% PA

**ABRASION**

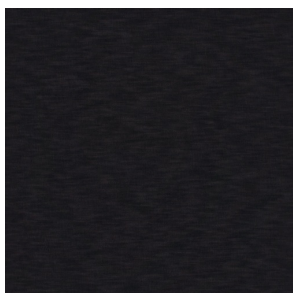
100000 martindale  
lightfastness 6  
pilling 4

**FIRE RESISTANCE**

BS 5852 - Ignition source  
1 (Match flame equivalent)  
BS 5852 - Ignition source  
0 (Cigarette)  
TB 117-2013  
EU Ecolabel

---

*DENIM (available in 3 colours)*



**COMPOSITION**

100% CO

**ABRASION**

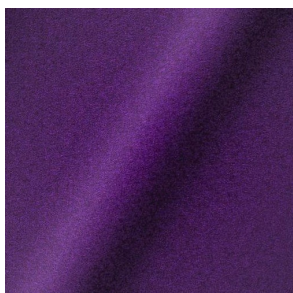
70000 martindale  
lightfastness 4  
pilling 3 - 4

**FIRE RESISTANCE**

BS5852 part 1 on request  
US. Cal. Bull. 117-2013

---

*DIVINA 3 (available in 56 colours)*



**COMPOSITION**

100% WO

**ABRASION**

45000 martindale  
lightfastness 7  
pilling 3

**FIRE RESISTANCE**

BS 5852 - Ignition source  
0 (Cigarette)  
BS 5852 - Ignition source  
5 (Crib 5)  
BS 5852 - Ignition source  
1 (Match flame equivalent)  
EN 1021-1 (Cigarette)  
EN 1021-2 (Match)  
TB 117-2013  
EU Ecolabel

---

*DIVINA MD (available in 27 colours)*



**COMPOSITION**

100% WO

**ABRASION**

45000 martindale  
lightfastness 6  
pilling 3

**FIRE RESISTANCE**

BS 5852 - Ignition source  
0 (Cigarette)  
BS 5852 - Ignition source  
5 (Crib 5)  
BS 5852 - Ignition source  
1 (Match flame equivalent)  
EN 1021-1 (Cigarette)  
EN 1021-2 (Match)  
EU Ecolabel

---

*DIVINA MELANGE 3 (available in 60 colours)*



**COMPOSITION**

100% WO

**ABRASION**

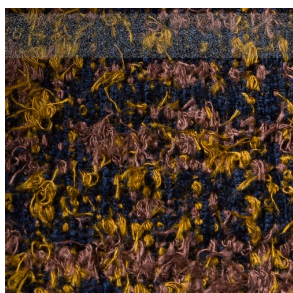
45000 martindale  
lightfastness 6 - 7  
pilling 3

**FIRE RESISTANCE**

BS 5852 - Ignition source  
0 (Cigarette)  
BS 5852 - Ignition source  
5 (Crib 5)  
BS 5852 - Ignition source  
1 (Match flame equivalent)  
EN 1021-1 (Cigarette)  
EN 1021-2 (Match)  
TB 117-2013  
EU Ecolabel

---

*Bearded Leopard (available in 3 colours)*



**COMPOSITION**

77% CV, 15% PES, 7% CO,  
1% PA

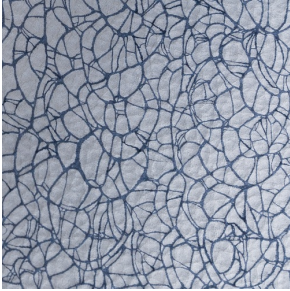
**ABRASION**

15000 martindale  
lightfastness 4 - 6  
pilling 4

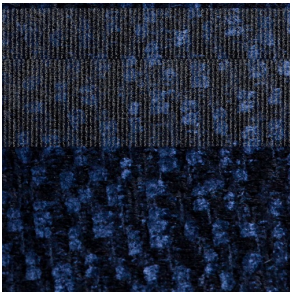
**FIRE RESISTANCE**

BS5852 part 1 on request  
US. Cal. Bull. 117-2013

*Armoured Boar, Crackle* (available in 1 colours)



*Calligraphy Bird* (available in 4 colours)



**COMPOSITION**

64% CV, 21% PES, 15%  
CO

**ABRASION**

50000 martindale  
lightfastness 4 - 6  
pilling 5

**FIRE RESISTANCE**

BS5852 part 1 on request  
US. Cal. Bull. 117-2013

*Dodo Pavone* (available in 3 colours)



**COMPOSITION**

12% CO, 88% PES

**ABRASION**

40000 martindale  
lightfastness 5  
pilling 4 - 5

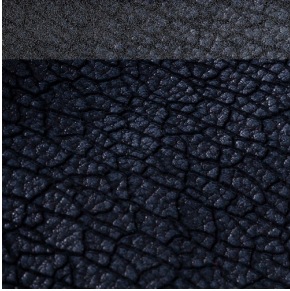
**FIRE RESISTANCE**

BS5852 part 1 on request  
US. Cal. Bull. 117-2013

*Dwarf Rhino Buffed* (available in 1 colours)



*Dwarf Rhino, Crackle* (available in 1 colours)



*Menagerie of Extinct Animals* (available in 2 colours)



**COMPOSITION**

100% PES

**ABRASION**

50000 martindale  
lightfastness 4 - 6  
pilling 5

**FIRE RESISTANCE**

BS5852 part 1 on request  
US. Cal. Bull. 117-2013

*Rendezvous Tokyo Blue* (available in 1 colours)



**COMPOSITION**

100% PES

**ABRASION**

50000 martindale  
lightfastness 4 - 6  
pilling 5

**FIRE RESISTANCE**

BS5852 part 1 on request  
US. Cal. Bull. 117-2013

*Blushing Sloth Melange Mohair* (available in 1 colours)



**COMPOSITION**

85% WV, 15% WM

**ABRASION**

15000 martindale  
lightfastness 4 - 6  
pilling 2 - 3

**FIRE RESISTANCE**

BS5852 part 1 on request  
US. Cal. Bull. 117-2013

*FIORD (available in 27 colours)*



**COMPOSITION**

92% WV, 8% PA

**ABRASION**

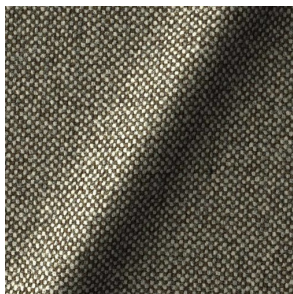
60000 martindale  
lightfastness 6  
pilling 4 - 5

**FIRE RESISTANCE**

EN 1021-1 (Cigarette)  
EN 1021-2 (Match)  
BS 5852 - Ignition source  
0 (Cigarette)  
BS 5852 - Ignition source  
1 (Match flame equivalent)

---

*HALLINGDAL 65 (available in 58 colours)*



**COMPOSITION**

30% CV, 70% WV

**ABRASION**

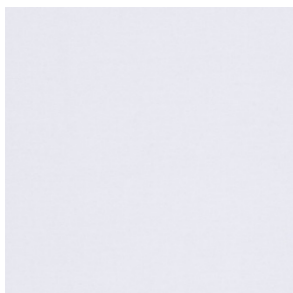
100000 martindale  
lightfastness 7  
pilling 3 - 4

**FIRE RESISTANCE**

BS 5852 - Ignition source  
0 (Cigarette)  
BS 5852 - Ignition source  
5 (Crib 5)  
BS 5852 - Ignition source  
1 (Match flame equivalent)  
EN 1021-1 (Cigarette)  
EN 1021-2 (Match)  
TB 117-2013  
EU Ecolabel

---

*HARALD 3 (available in 30 colours)*



**COMPOSITION**

100% CO

**ABRASION**

100000 martindale  
lightfastness 5  
pilling 4 - 5

**FIRE RESISTANCE**

EN 1021-1 (Cigarette)

---

*HERITAGE (available in 1 colours)*

**COMPOSITION**

100% PES

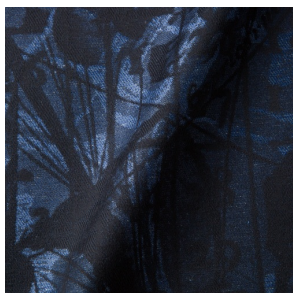
**ABRASION**

50000 martindale  
pilling 4

**FIRE RESISTANCE**

BS5852 part 1 on request  
US. Cal. Bull. 117-2013

*JACQUARD, ANDAZ (available in 1 colours)*



**COMPOSITION**

34% CO, 30% CV, 24%  
LI, 12% PA

**ABRASION**

25000 martindale  
lightfastness 4 - 6  
pilling 4 - 5

**FIRE RESISTANCE**

BS 5852 - Ignition source  
0 (Cigarette)  
BS 5852 - Ignition source  
1 (Match flame equivalent)  
EN 1021-1 (Cigarette)  
EN 1021-2 (Match)

---

*JACQUARD, FRESC (available in 1 colours)*



**COMPOSITION**

52% CV, 38% CO, 10% LI

**ABRASION**

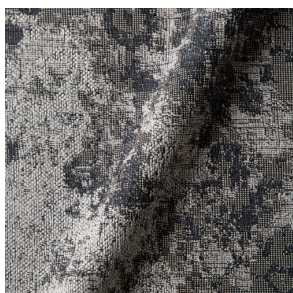
15000 martindale  
lightfastness 3 - 4  
pilling 2 - 3

**FIRE RESISTANCE**

BS 5852 - Ignition source  
0 (Cigarette)  
EN 1021-1 (Cigarette)  
EN 1021-2 (Match)

---

*JACQUARD, OLD (available in 2 colours)*



**COMPOSITION**

52% CV, 38% CO, 10% LI

**ABRASION**

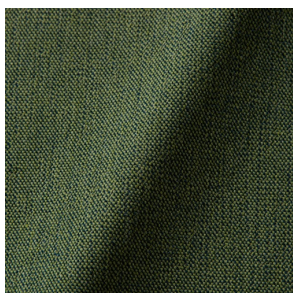
15000 martindale  
lightfastness 3 - 4  
pilling 2 - 3

**FIRE RESISTANCE**

BS 5852 - Ignition source  
0 (Cigarette)  
EN 1021-1 (Cigarette)  
EN 1021-2 (Match)

---

*JUSTO (available in 10 colours)*



**COMPOSITION**

15% CO, 35% PC, 10% PA,  
40% CV

**ABRASION**

50000 martindale  
lightfastness 5  
pilling 4

**FIRE RESISTANCE**

EN 1021-1 (Cigarette)  
EN 1021-2 (Match)  
TB 117-2013



*LISCIO (available in 11 colours)*



**COMPOSITION**

35% WO, 35% CV, 21%  
CO, 9% PA

**ABRASION**

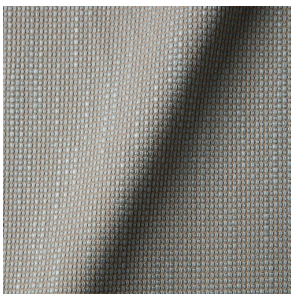
30000 martindale  
lightfastness 4 - 6  
pilling 4

**FIRE RESISTANCE**

TB 117-2013

---

*MACCHEDIL GREZZO (available in 10 colours)*



**COMPOSITION**

47% CO, 20% CV, 18%  
PA, 8% LI, 5% PC

**ABRASION**

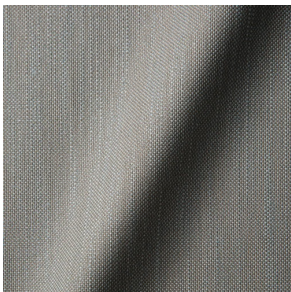
15000 martindale  
lightfastness 3 - 5  
pilling 4 - 5

**FIRE RESISTANCE**

BS5852 part 1 on request

---

*MACCHEDIL SOTTILE (available in 10 colours)*



**COMPOSITION**

49% CV, 24% PES, 21% LI,  
6% CO

**ABRASION**

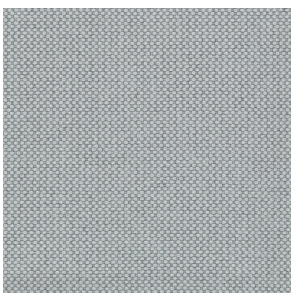
20000 martindale  
lightfastness 3 - 5  
pilling 2 - 3

**FIRE RESISTANCE**

BS5852 part 1 on request

---

*MERIT (available in 43 colours)*



**COMPOSITION**

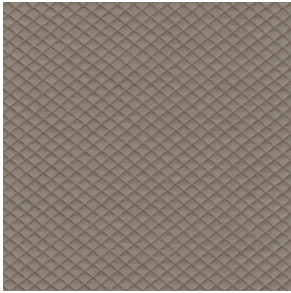
24% PES, 76%

**ABRASION**

85000 martindale  
lightfastness 7  
pilling 4

---

*MOSAIC 2 (available in 15 colours)*



**COMPOSITION**

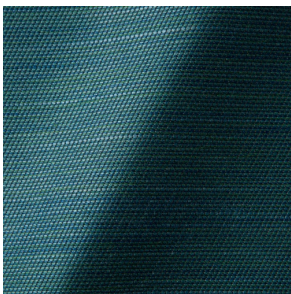
58% PES, 27% WV, 9% PA,  
6% EA

**ABRASION**

100000 martindale  
lightfastness 6 - 7  
pilling 4 - 5

---

*ORAY RAY (available in 15 colours)*



**COMPOSITION**

39% LI, 38% CV, 15% PE,  
8% CO

**ABRASION**

30000 martindale  
pilling 4 - 5

**FIRE RESISTANCE**

BS 5852 - Ignition source  
0 (Cigarette)  
BS 5852 - Ignition source  
1 (Match flame equivalent)  
TB 117-2013

---

*ORAY RONAN (available in 5 colours)*



**COMPOSITION**

39% LI, 38% CV, 15% PE,  
8% CO

**ABRASION**

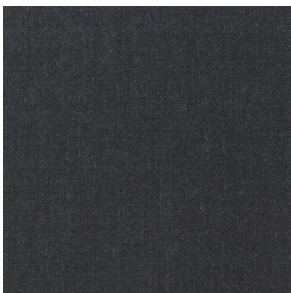
30000 martindale  
pilling 4 - 5

**FIRE RESISTANCE**

BS 5852 - Ignition source  
0 (Cigarette)  
BS 5852 - Ignition source  
1 (Match flame equivalent)  
TB 117-2013

---

*REMIX 3 (available in 53 colours)*



**COMPOSITION**

10% PA, 90% WV

**ABRASION**

100000 martindale  
lightfastness 5  
pilling 4

**FIRE RESISTANCE**

BS5852 part 1  
US. Cal. Bull. 117-2013

*SOLIS (available in 9 colours)*



**COMPOSITION**

60% WO, 30% PES, 2%  
PA, 3% PC

**ABRASION**

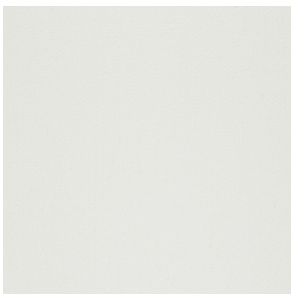
40000 martindale  
lightfastness 5  
pilling 3 - 4

**FIRE RESISTANCE**

EN 1021-1 (Cigarette)  
EN 1021-2 (Match)  
TB 117-2013

---

*STEELCUT 2 (available in 37 colours)*



**COMPOSITION**

90% WV, 10% PA

**ABRASION**

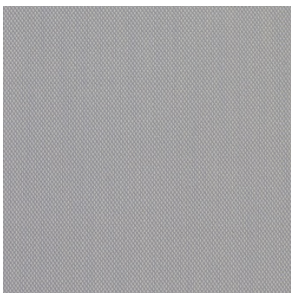
100000 martindale  
lightfastness 6  
pilling 3 - 4

**FIRE RESISTANCE**

BS 5852 - Ignition source  
0 (Cigarette)  
BS 5852 - Ignition source  
1 (Match flame equivalent)  
EN 1021-1 (Cigarette)  
EN 1021-2 (Match)  
TB 117-2013  
EU Ecolabel

---

*STEELCUT TRIO 3 (available in 54 colours)*



**COMPOSITION**

90% WV, 10% PA

**ABRASION**

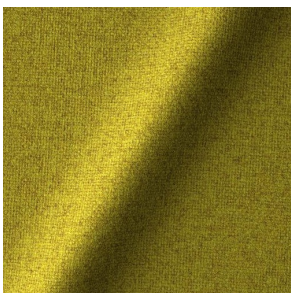
100000 martindale  
lightfastness 5  
pilling 4

**FIRE RESISTANCE**

BS 5852 - Ignition source  
0 (Cigarette)  
BS 5852 - Ignition source  
1 (Match flame equivalent)  
EN 1021-1 (Cigarette)  
EN 1021-2 (Match)  
EU Ecolabel

---

*TONICA 2 (available in 39 colours)*



**COMPOSITION**

100% WV

**ABRASION**

45000 martindale  
lightfastness 6 - 7  
pilling 4 - 5

**FIRE RESISTANCE**

EN 1021-1 (Cigarette)  
EN 1021-2 (Match)

---

*VESPER* (available in 8 colours)



**COMPOSITION**

10% CO, 40% LI, 10% PA,  
10% PES, 30% CV

**ABRASION**

40000 martindale  
lightfastness 5  
pilling 4

**FIRE RESISTANCE**

EN 1021-1 (Cigarette)  
EN 1021-2 (Match)  
TB 117-2013

---