

m o o o i

# Cloud Footstool

MARCEL WANDERS STUDIO



Imagine resting your feet in the clouds...

---

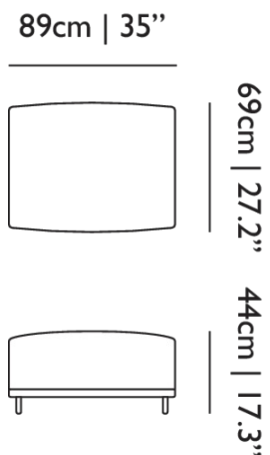
## *Detailing*



The Cloud Footstool is a matching footstool for the Cloud Sofa.

# Cloud Footstool / Footstool

## Dimensions



## Product

**WIDTH** 89cm | 35"  
**HEIGHT** 44cm | 17.3"  
**DEPTH** 69cm | 27.2"

## Packaging

**WIDTH** 87cm | 34.3"  
**HEIGHT** 42cm | 16.5"  
**CUBAGE** 0.32m<sup>3</sup> | 11.23ft<sup>3</sup>  
**LENGTH** 87cm | 34.3"  
**WEIGHT** 20kg | 44.09lbs

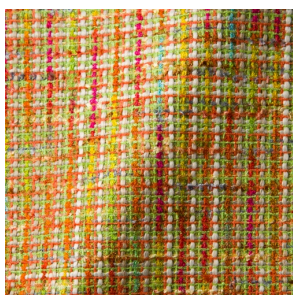
## Technical

### MATERIAL

Steel frame, moulded foam and dacron.

## Upholstery

*BOUCLE* (available in 4 colours)



### COMPOSITION

43% CO, 14% PA, 12% CV,  
3% PES, 28% PAN

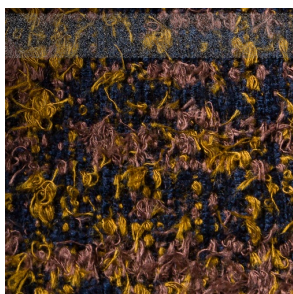
### ABRASION

20000 martindale  
lightfastness 4 - 6  
pilling 4 - 5

### FIRE RESISTANCE

EN 1021-1 (Cigarette)  
EN 1021-2 (Match)

*Bearded Leopard* (available in 3 colours)



### COMPOSITION

77% CV, 15% PES, 7% CO,  
1% PA

### ABRASION

15000 martindale  
lightfastness 4 - 6  
pilling 4

### FIRE RESISTANCE

BS5852 part 1 on request  
US. Cal. Bull. 117-2013

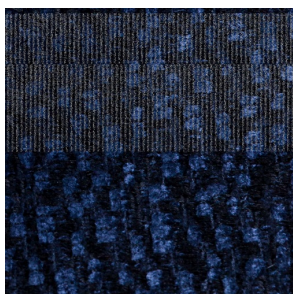
---

*Bison (available in 1 colours)*



---

*Calligraphy Bird (available in 4 colours)*



**COMPOSITION**

64% CV, 21% PES, 15%  
CO

**ABRASION**

50000 martindale  
lightfastness 4 - 6  
pilling 5

**FIRE RESISTANCE**

BS5852 part 1 on request  
US. Cal. Bull. 117-2013

---

*Dodo Pavone (available in 3 colours)*



**COMPOSITION**

12% CO, 88% PES

**ABRASION**

40000 martindale  
lightfastness 5  
pilling 4 - 5

**FIRE RESISTANCE**

BS5852 part 1 on request  
US. Cal. Bull. 117-2013

---

*Blushing Sloth Melange Mohair (available in 1 colours)*



**COMPOSITION**

85% WV, 15% WM

**ABRASION**

15000 martindale  
lightfastness 4 - 6  
pilling 2 - 3

**FIRE RESISTANCE**

BS5852 part 1 on request  
US. Cal. Bull. 117-2013

*Blushing Sloth Woolly Mohair (available in 1 colours)*



**COMPOSITION**

24% PES, 15% PA, 8% CO,  
24% WM, 29% WV

**ABRASION**

40000 martindale  
lightfastness 4 - 6  
pilling 3 - 4

**FIRE RESISTANCE**

BS5852 part 1 on request  
US. Cal. Bull. 117-2013

---

*LISCIO (available in 11 colours)*



**COMPOSITION**

35% WO, 35% CV, 21%  
CO, 9% PA

**ABRASION**

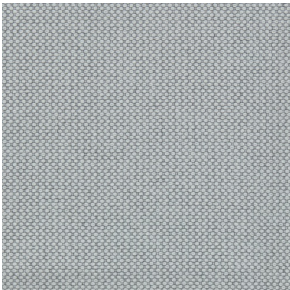
30000 martindale  
lightfastness 4 - 6  
pilling 4

**FIRE RESISTANCE**

TB 117-2013

---

*MERIT (available in 43 colours)*



**COMPOSITION**

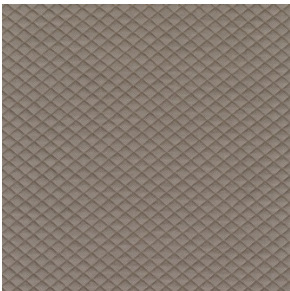
24% PES, 76%

**ABRASION**

85000 martindale  
lightfastness 7  
pilling 4

---

*MOSAIC 2 (available in 15 colours)*



**COMPOSITION**

58% PES, 27% WV, 9% PA,  
6% EA

**ABRASION**

100000 martindale  
lightfastness 6 - 7  
pilling 4 - 5

---