

MANTLE PIECE

**DOODLES COLLECTION**

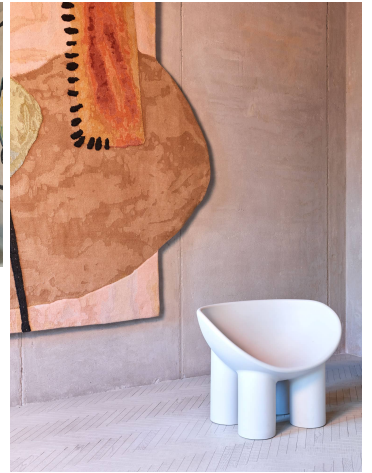
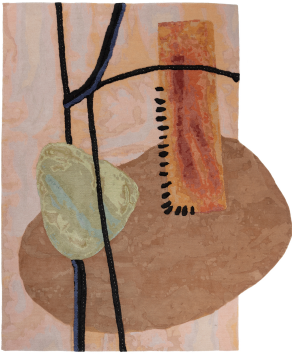
*designed by Faye Toogood*



**MANTLE PIECE**

**DOODLES COLLECTION**

*designed by Faye Toogood*



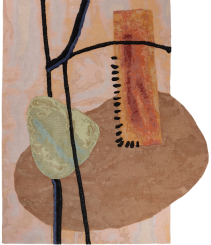
# MANTLE PIECE

**DOODLES COLLECTION**

*designed by Faye Toogood*

## MODEL

*Mantle Piece*



## COLOR

*Standard*

## DIMENSIONS

*230x277 cm*

## MATERIALS

*Cotton weave, Himalayan wool pile and cotton stitching*

## QUALITY

*A (125.000 knots / sqm approx.)*

## CUSTOMIZATION

*Customizable in size*

## FAYE TOOGOOD



*Faye Toogood is a British designer. Her furniture and objects demonstrate a preoccupation with materiality and experimentation. All of her pieces are handmade by small-scale fabricators and traditional artisans, with an honesty to the rawness and irregularity of the chosen material. With an academic training in the theory and practise of fine art, and a vocational background at the forefront of the magazine industry, Toogood approaches product design with a singular and acutely honed eye. Her highly sculptural work, while showing an astute respect for the past, is derived from pure self-expression and instinct. Toogood's objects are grouped together into her trademark numbered 'Assemblages'. This allows her to avoid the formulaic, to experiment with the materials and processes that dominate her thinking at a particular time. With each Assemblage, she engages not only with the products themselves but also with the three-dimensional space in which they are exhibited, working across multiple disciplines to create a single body of work with an intuitive and unified narrative.*

