

m o o o i

Bart Armchair

MOOOI WORKS



The Bart Armchair brings a friendly sort of grandeur to your home. This single-seater does the rounded shapes of the Bart family even more justice, especially with the optional swivel foot that makes a circular motion. Having a conversation or to inspired to sit still? Swivel your Bart Armchair around and enjoy another point of view! If you prefer a more solid setup, the Bart Armchair is available with slanted wooden legs (canape) and without.

Detailing



The Bart Armchair is originally inspired by the rounded shapes and sumptuous glory of 18th century Rococo.

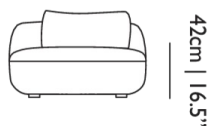
Bart Armchair / Basic

Dimensions

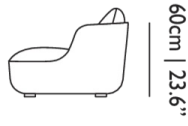
95cm | 37.4"



95cm | 37.4"



42cm | 16.5"



60cm | 23.6"

Product

WIDTH 95cm | 37.4"

HEIGHT 60cm | 23.6"

DEPTH 95cm | 37.4"

Packaging

WIDTH 102cm | 40.2"

HEIGHT 63cm | 24.8"

CUBAGE 0.67m³ | 23.6ft³

LENGTH 104cm | 40.9"

WEIGHT 39kg | 85.98lbs

Technical

MATERIAL

Wooden frame covered in foam and dacron, foam seat.

HEIGHT ARMREST

60cm | 23.6"

SEAT HEIGHT

42cm | 16.5"

SEAT DEPTH

69cm | 27.2"

SEAT WIDTH

82cm | 32.3"

Bart Armchair / Canape

Dimensions

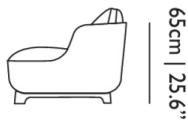
95cm | 37.4"



95cm | 37.4"



47cm | 18.5"



65cm | 25.6"

Product

WIDTH 95cm | 37.4"

HEIGHT 65cm | 25.6"

DEPTH 95cm | 37.4"

Packaging

WIDTH 102cm | 40.2"

HEIGHT 63cm | 24.8"

CUBAGE 0.67m³ | 23.6ft³

LENGTH 104cm | 40.9"

WEIGHT 39kg | 85.98lbs

Technical

MATERIAL

Wooden frame covered in foam and dacron, foam seat.

HEIGHT ARMREST

65cm | 25.6"

SEAT DEPTH

74cm | 29.1"

SEAT HEIGHT

47cm | 18.5"

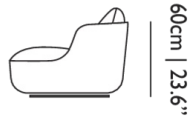
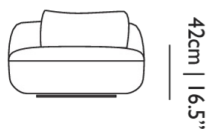
SEAT WIDTH

82cm | 32.3"

Bart Armchair / Swivel

Dimensions

95cm | 37.4"



Product

WIDTH 95cm | 37.4"

HEIGHT 60cm | 23.6"

DEPTH 95cm | 37.4"

Packaging

WIDTH 102cm | 40.2"

HEIGHT 63cm | 24.8"

CUBAGE 0.67m³ | 23.6ft³

LENGTH 104cm | 40.9"

WEIGHT 39kg | 85.98lbs

Technical

MATERIAL

Wooden frame covered in foam and dacron, foam seat.

HEIGHT ARMREST

60cm | 23.6"

SEAT DEPTH

69cm | 27.2"

SEAT HEIGHT

42cm | 16.5"

SEAT WIDTH

82cm | 32.3"

Upholstery

CANVAS 2 (available in 45 colours)



COMPOSITION

90% WO, 10% PA

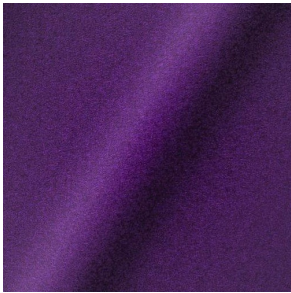
ABRASION

100000 martindale
lightfastness 6
pilling 4

FIRE RESISTANCE

BS 5852 - Ignition source
1 (Match flame equivalent)
BS 5852 - Ignition source
0 (Cigarette)
TB 117-2013
EU Ecolabel

DIVINA 3 (available in 56 colours)



COMPOSITION

100% WO

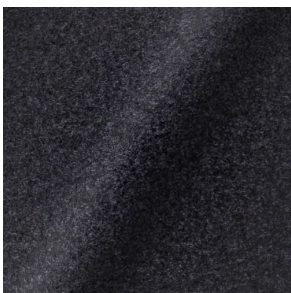
ABRASION

45000 martindale
lightfastness 7
pilling 3

FIRE RESISTANCE

BS 5852 - Ignition source
0 (Cigarette)
BS 5852 - Ignition source
5 (Crib 5)
BS 5852 - Ignition source
1 (Match flame equivalent)
EN 1021-1 (Cigarette)
EN 1021-2 (Match)
TB 117-2013
EU Ecolabel

DIVINA MD (available in 27 colours)



COMPOSITION

100% WO

ABRASION

45000 martindale
lightfastness 6
pilling 3

FIRE RESISTANCE

BS 5852 - Ignition source
0 (Cigarette)
BS 5852 - Ignition source
5 (Crib 5)
BS 5852 - Ignition source
1 (Match flame equivalent)
EN 1021-1 (Cigarette)
EN 1021-2 (Match)
EU Ecolabel

DIVINA MELANGE 3 (available in 60 colours)



COMPOSITION

100% WO

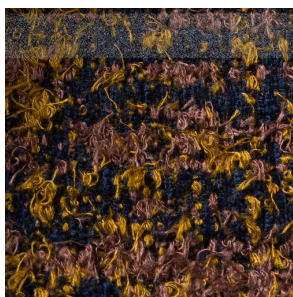
ABRASION

45000 martindale
lightfastness 6 - 7
pilling 3

FIRE RESISTANCE

BS 5852 - Ignition source
0 (Cigarette)
BS 5852 - Ignition source
5 (Crib 5)
BS 5852 - Ignition source
1 (Match flame equivalent)
EN 1021-1 (Cigarette)
EN 1021-2 (Match)
TB 117-2013
EU Ecolabel

Bearded Leopard (available in 3 colours)



COMPOSITION

77% CV, 15% PES, 7% CO,
1% PA

ABRASION

15000 martindale
lightfastness 4 - 6
pilling 4

FIRE RESISTANCE

BS5852 part 1 on request
US. Cal. Bull. 117-2013

Bison (available in 1 colours)



Dodo Pavone (available in 3 colours)



COMPOSITION

12% CO, 88% PES

ABRASION

40000 martindale
lightfastness 5
pilling 4 - 5

FIRE RESISTANCE

BS5852 part 1 on request
US. Cal. Bull. 117-2013

Blushing Sloth Melange Mohair (available in 1 colours)



COMPOSITION

85% WV, 15% WM

ABRASION

15000 martindale
lightfastness 4 - 6
pilling 2 - 3

FIRE RESISTANCE

BS5852 part 1 on request
US. Cal. Bull. 117-2013

Blushing Sloth Woolly Mohair (available in 1 colours)



COMPOSITION

24% PES, 15% PA, 8% CO,
24% WM, 29% WV

ABRASION

40000 martindale
lightfastness 4 - 6
pilling 3 - 4

FIRE RESISTANCE

BS5852 part 1 on request
US. Cal. Bull. 117-2013

FIORD (available in 27 colours)



COMPOSITION

92% WV, 8% PA

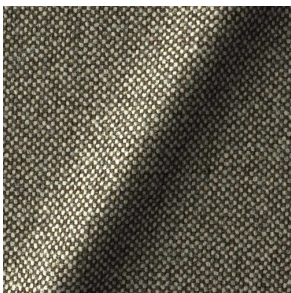
ABRASION

60000 martindale
lightfastness 6
pilling 4 - 5

FIRE RESISTANCE

EN 1021-1 (Cigarette)
EN 1021-2 (Match)
BS 5852 - Ignition source
0 (Cigarette)
BS 5852 - Ignition source
1 (Match flame equivalent)

HALLINGDAL 65 (available in 58 colours)



COMPOSITION

30% CV, 70% WV

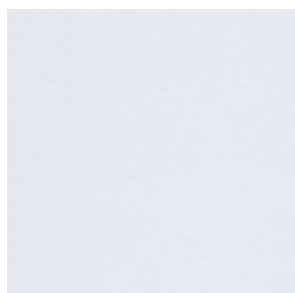
ABRASION

100000 martindale
lightfastness 7
pilling 3 - 4

FIRE RESISTANCE

BS 5852 - Ignition source
0 (Cigarette)
BS 5852 - Ignition source
5 (Crib 5)
BS 5852 - Ignition source
1 (Match flame equivalent)
EN 1021-1 (Cigarette)
EN 1021-2 (Match)
TB 117-2013
EU Ecolabel

HARALD 3 (available in 30 colours)



COMPOSITION

100% CO

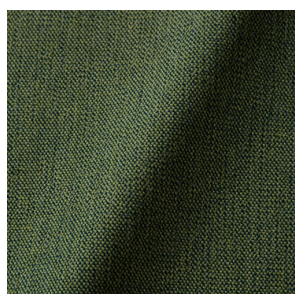
ABRASION

100000 martindale
lightfastness 5
pilling 4 - 5

FIRE RESISTANCE

EN 1021-1 (Cigarette)

JUSTO (available in 10 colours)



COMPOSITION

15% CO, 35% PC, 10% PA,
40% CV

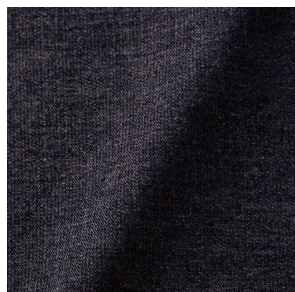
ABRASION

50000 martindale
lightfastness 5
pilling 4

FIRE RESISTANCE

EN 1021-1 (Cigarette)
EN 1021-2 (Match)
TB 117-2013

LISCIO (available in 11 colours)



COMPOSITION

35% WO, 35% CV, 21%
CO, 9% PA

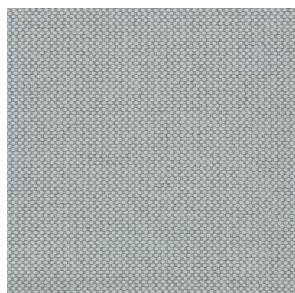
ABRASION

30000 martindale
lightfastness 4 - 6
pilling 4

FIRE RESISTANCE

TB 117-2013

MERIT (available in 43 colours)



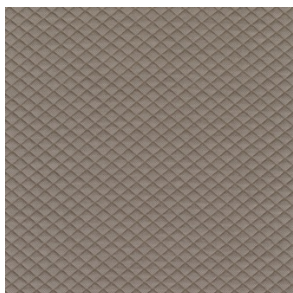
COMPOSITION

24% PES, 76%

ABRASION

85000 martindale
lightfastness 7
pilling 4

MOSAIC 2 (available in 15 colours)



COMPOSITION

58% PES, 27% WV, 9% PA,
6% EA

ABRASION

100000 martindale
lightfastness 6 - 7
pilling 4 - 5

REMIX 3 (available in 53 colours)



COMPOSITION

10% PA, 90% WV

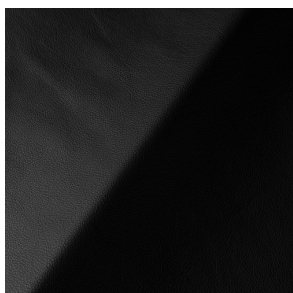
ABRASION

100000 martindale
lightfastness 5
pilling 4

FIRE RESISTANCE

BS5852 part 1
US. Cal. Bull. 117-2013

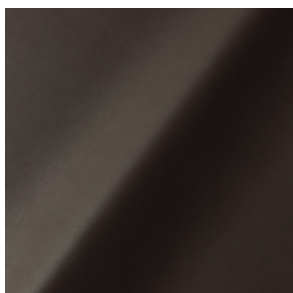
SAVANNE (available in 3 colours)



FIRE RESISTANCE

EN 1021-1 (Cigarette)
EN 1021-2 (Match)
TB 117-2013
OEKO-TEX

SHADE (available in 6 colours)



ABRASION

lightfastness 3 - 4

FIRE RESISTANCE

EN 1021-1 (Cigarette)
EN 1021-2 (Match)
TB 117-2013

SOLIS (available in 9 colours)



COMPOSITION

60% WO, 30% PES, 2%
PA, 3% PC

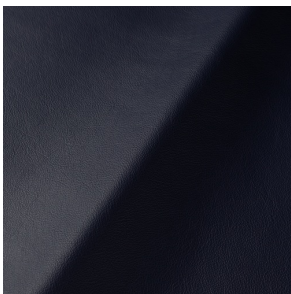
ABRASION

40000 martindale
lightfastness 5
pilling 3 - 4

FIRE RESISTANCE

EN 1021-1 (Cigarette)
EN 1021-2 (Match)
TB 117-2013

SPECTRUM (available in 11 colours)



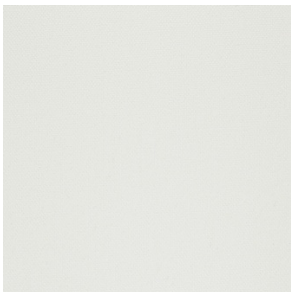
ABRASION

lightfastness 6 - 6

FIRE RESISTANCE

EN 1021-1 (Cigarette)
EN 1021-2 (Match)
TB 117-2013
OEKO-TEX

STEELCUT 2 (available in 37 colours)



COMPOSITION

90% WV, 10% PA

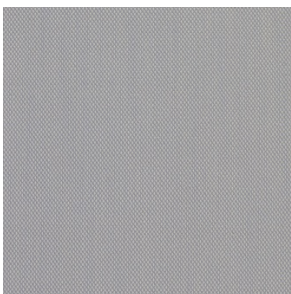
ABRASION

100000 martindale
lightfastness 6
pilling 3 - 4

FIRE RESISTANCE

BS 5852 - Ignition source
0 (Cigarette)
BS 5852 - Ignition source
1 (Match flame equivalent)
EN 1021-1 (Cigarette)
EN 1021-2 (Match)
TB 117-2013
EU Ecolabel

STEELCUT TRIO 3 (available in 54 colours)



COMPOSITION

90% WV, 10% PA

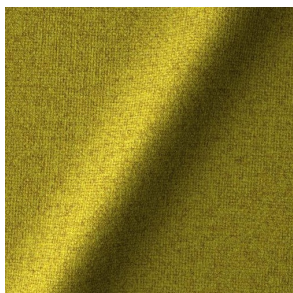
ABRASION

100000 martindale
lightfastness 5
pilling 4

FIRE RESISTANCE

BS 5852 - Ignition source
0 (Cigarette)
BS 5852 - Ignition source
1 (Match flame equivalent)
EN 1021-1 (Cigarette)
EN 1021-2 (Match)
EU Ecolabel

TONICA 2 (available in 39 colours)



COMPOSITION

100% WV

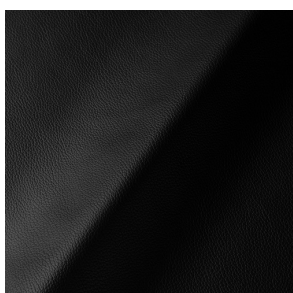
ABRASION

45000 martindale
lightfastness 6 - 7
pilling 4 - 5

FIRE RESISTANCE

EN 1021-1 (Cigarette)
EN 1021-2 (Match)

ULTRA (available in 6 colours)



ABRASION

lightfastness 6 - 7

FIRE RESISTANCE

EN 1021-1 (Cigarette)
EN 1021-2 (Match)
TB 117-2013
ANSI/BIFMA M7.1 (Total
Volatile Organic
Compounds)

VESPER (available in 8 colours)



COMPOSITION

10% CO, 40% LI, 10% PA,
10% PES, 30% CV

ABRASION

40000 martindale
lightfastness 5
pilling 4

FIRE RESISTANCE

EN 1021-1 (Cigarette)
EN 1021-2 (Match)
TB 117-2013
