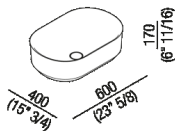




Countertop or structure washbasin  
ACER0708P\_

Neri&Hu, 2018

Over countertop washbasin in Cristalplant®  
biobased.



**Finishes**

-  White
-  White/dark grey
-  White/light grey

**Materials**

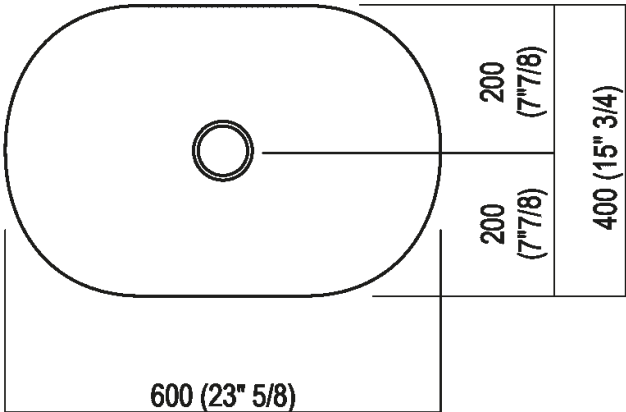
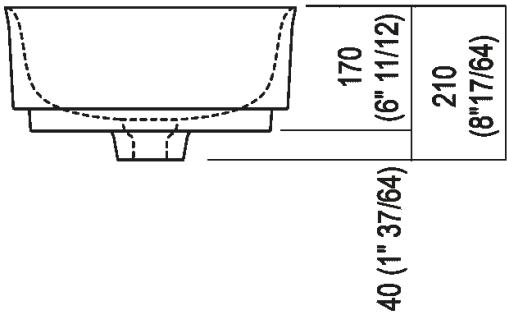
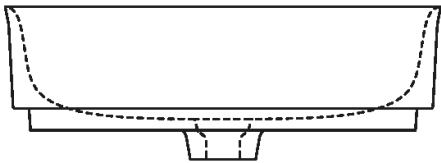
-  Cristalplant® biobased

Countertop or for structure washbasin in white or two-coloured Cristalplant®; biobased (RAL7021 dark grey or RAL 7044 light grey soft touch exterior), without tap hole, no overflow. The washbasin is fitted with a white Cristalplant®; biobased waste with cap flush aligned with the inner surface of the washbasin.

Height:	17 cm	6" 11/16 inches
Length:	60 cm	23" 5/8 inches
Weight:	9 kg	20 lbs
Depth:	40 cm	15" 3/4 inches
Packaging:	52 x 75 x 23 cm	20" 1/2 x 29" 1/2 x 9" inches
Total weight:	14 kg	31 lbs

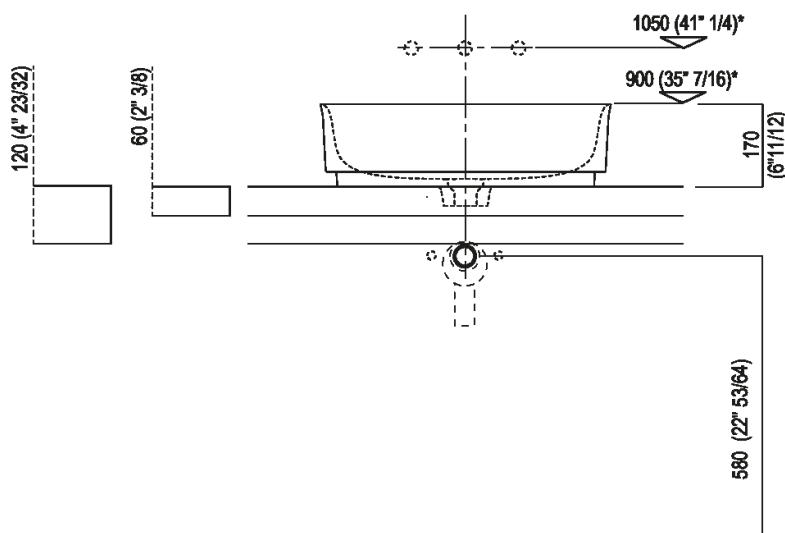


Main dimensions





Installation notes: on self-bearing countertop

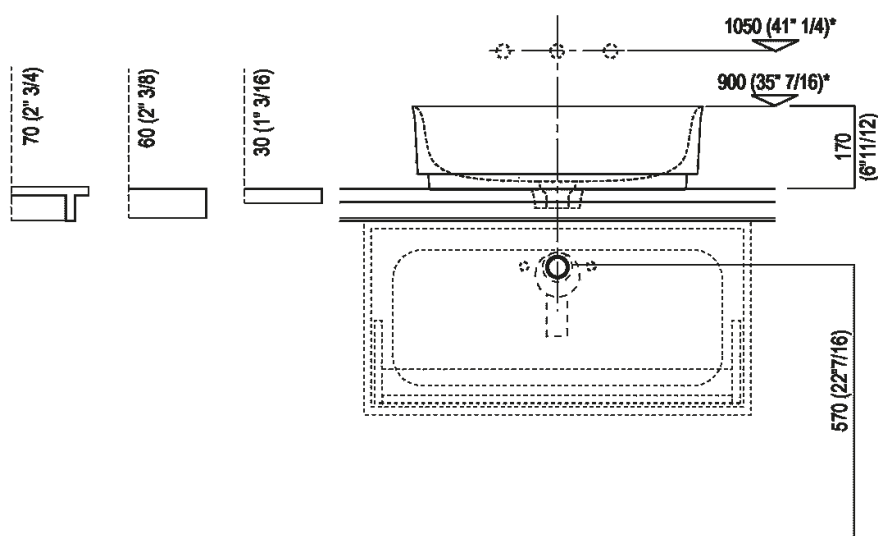


Scarico per sifone a bottiglia e ad incasso  
Drain for bottle trap and concealed waste trap

\*h.consigliata / advised h.



Installation notes: on countertop to be resede on cabinets

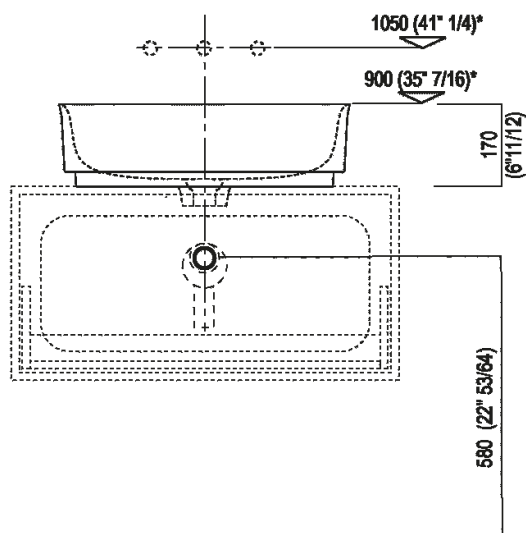


Scarico per sifone a bottiglia  
 Drain for bottle trap

\*h.consigliata / advised h.



Installation notes: on casing H 40 cm Lato

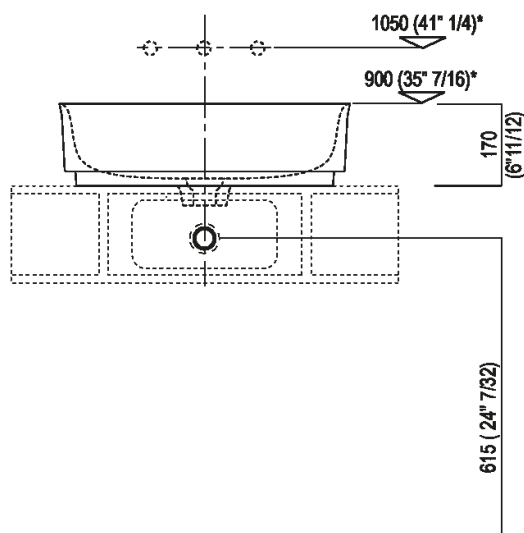


Scarico per sifone a bottiglia  
 Drain for bottle trap

\*h.consigliata / advised h.



Installation notes: on casing H 20 cm Lato



Scarico per sifone a bottiglia  
 Drain for bottle trap

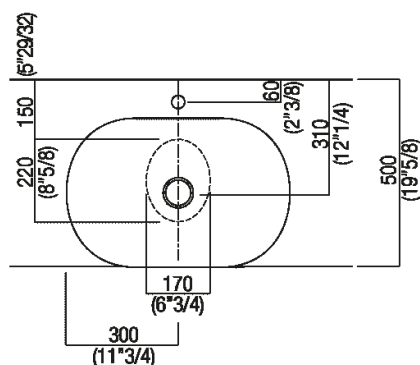
\*h.consigliata / advised h.



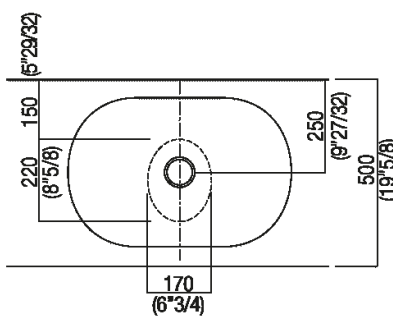
Holes for countertop washbasins and top mounted taps for top

**PIANO cm 50 / COUNTERTOP cm 50**

Posizione standard per rubinetto su piano  
 Standard position for top mounted tap



Posizione standard per rubinetto a parete  
 Standard position for wall mounted tap



Posizione speciale per rubinetto Sen a parete e Square con bocca curva  
 Special position for wall mounted tap Sen and Square white curved spout

NON NECESSARIA  
 NOT NECESSARY



Tap position, recommended height

**POSIZIONE RUBINETTERIA / TAP POSITION**

Altezza consigliata / Recommended height

