

IPANEMA

JEAN-MARIE MASSAUD (2015)



DESCRIPTION

The Ipanema collection is enlarged by a system of chairs in evolution. Style that combines simplicity and originality, lightness and practicality. The extremely elegant and simple shapes of this chair speak softly of its refinement.

Poliform

IPANEMA

JEAN-MARIE MASSAUD (2015)



TECHNICAL DESCRIPTION

Structure

solid wood

Seat/Backrest

flexible moulded polyurethane

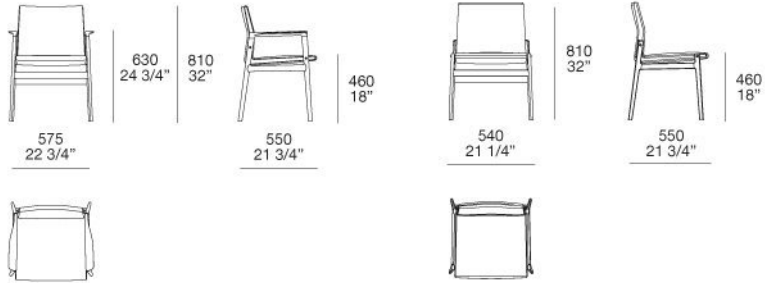
Features

final cover in fabric/leather/imitation leather not removable

IPANEMA

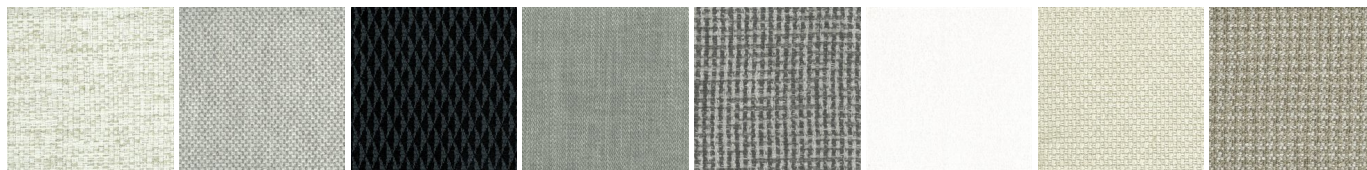
JEAN-MARIE MASSAUD (2015)

S39



IPANEMA

FINISHINGS\SEAT\FABRIC (41)



CHIOS - NEW
2016

ARGO - NEW
2016

CORINTO -
NEW 2016

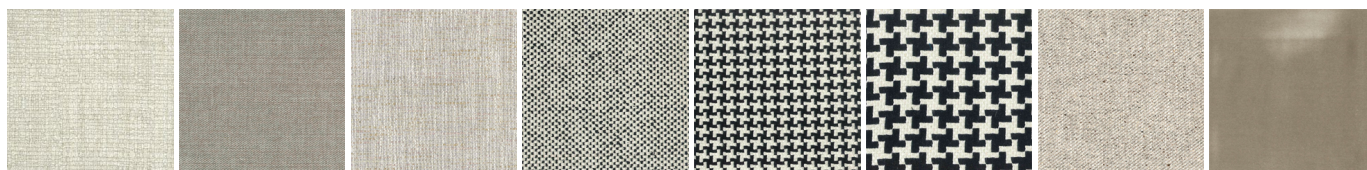
ITACA - NEW
2016

MILOS - NEW
2016

OLIMPIA -
NEW 2016

PAROS - NEW
2016

ZANTE - NEW
2016



SPARTA -
NEW 2016

SALFORD

ORLEANS

DERBY

LIMOGES

CALAIS

OXFORD

PERSIA



RABAT

MERIDA

HANNOVER

CORDOBA

CALEDONIA

BREDA

NORWAY

ASPEN



ATLANTA

BERLINO

BILBAO

DRESDA

KYOTO

LIMA

MELBOURNE

PARIS



PORTO

REIMS

SAVANA

SIVIGLIA

SONORA

VIENNA

VANCOUVER

TOLEDO



NEPAL

IPANEMA

FINISHINGS\SEAT\LEATHER (8)



NABUK
LEATHER

VINTAGE
LEATHER

SUPER
LEATHER

PELLE
SPECIAL

AGED-
LOOKING
LEATHER

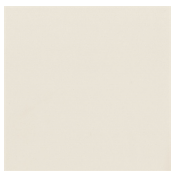
COLORS
LEATHER

SPRING
LEATHER

MALIBÙ
IMITATION
LEATHER

IPANEMA

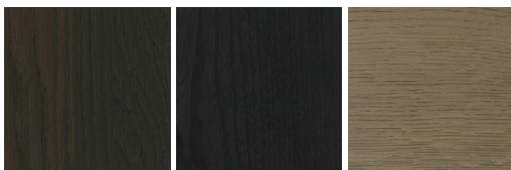
FINISHINGS\SEAT\IMITATION LEATHER (1)



IMITATION
LEATHER
MALIBÙ -
NEW

IPANEMA

FINISHINGS\STRUCTURE\WOODS (3)



SPESSART
OAK

BLACK ELM

CENERE OAK