

---

# Ofx 09

---

*Studio G&R*

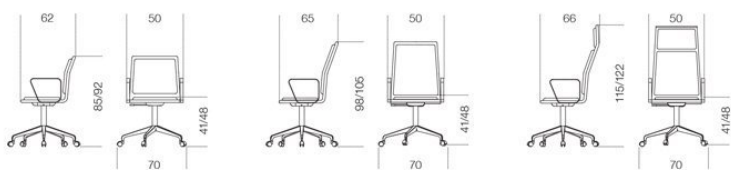


*Sedia ufficio ergonomica. Seduta con scocca in legno imbottito e rivestito in pelle scamosciata o ecopelle nei colori del campionario. Schienale in 3 diverse altezze. Base girevole a 5 razze in alluminio pressofuso dotato di elevazione a gas, con ruote o finalini. Disponibile con braccioli cromati.*

*Ergonomic office chair. Upholstered wooden seat covered with suede or eco-leather as per samples. 3 different heights for backrest. Swivel five-star base made of die-cast aluminium. Gas lift height adjustment, with castors or feet. Available with chromed armrests.*

*Dimensioni / Sizes*  
50 x 62 x 85h/92h cm  
50 x 65 x 98h/105h cm  
50 x 66 x 115h/122h cm

*Inches*  
19¾" x 24½" x 33½"h/36¼"h  
19¾" x 25¾" x 38¾"h/41½"h  
19¾" x 26" x 45½"h/48¼"h

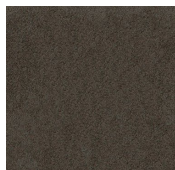


*Pelle scamosciata / Suede*

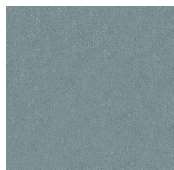
*Sand 06*  
*Sand 06*



*Sand 012*  
*Sand 012*



*Grey 020*  
*Grey 020*

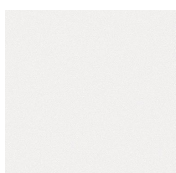


*Grey 058*  
*Grey 058*



*Grey 074*  
*Grey 074*

---

*Eco pelle / Eco leather*

*Bianco*  
*White*



*Nero*  
*Black*

---