
Lui

Paolo Maria Fumagalli
2010

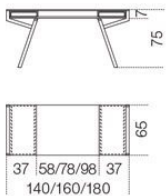


Scrivania con piano superiore in cristallo trasparente temperato 12mm con struttura in acciaio inox lucido o satinato. Disponibile anche in cristallo "grigio Italia" con struttura in metallo brunito. Ripiano inferiore e cassetti in frassino naturale, tinto wengè, tinto tabacco, laccato bianco o nero a poro aperto. Su richiesta tappetino in feltro o in pelle scamosciata nei colori del campionario.

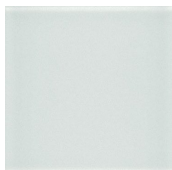
Desk with 12mm transparent tempered glass top with bright or satin stainless steel structure. Available also smoked "grigio Italia" glass top with burnished metal structure. Natural ash, wengè stained, tobacco stained, white or black open pore lacquered bottom shelf and drawers. On request pad covered by felt or suede, available colours as per sample.

Dimensioni / Sizes
 140 x 65 x 75h cm
 160 x 65 x 75h cm
 180 x 65 x 75h cm

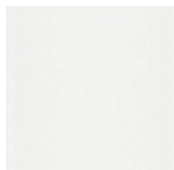
Inches
 55¼" x 25¾" x 29¾"h
 63" x 25¾" x 29¾"h
 71" x 25¾" x 29¾"h



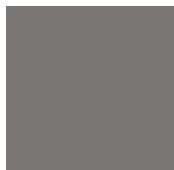


Cristallo / Glass

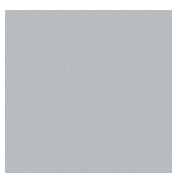
Trasparente
Transparent



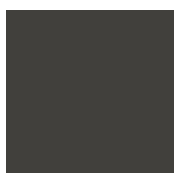
Extralight
Extralight



"Grigio Italia"
"Grigio Italia"

Metallo / Metal

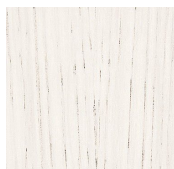
Acciaio inox
satinato
Bright stainless
steel



Metallo
brunito
Satin stainless
steel

Legno / Wood

Frassino
naturale
Natural ash



Bianco poro
aperto
Tobacco
stained ash



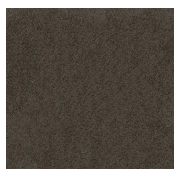
Nero poro
aperto
Wengè stained
ash

Pelle scamosciata / Suede

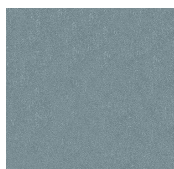
Sand 06
Sand 06



Sand 012
Sand 012



Grey 020
Grey 020



Grey 058
Grey 058



Grey 074
Grey 074

Feltro / Felt

Lime
Lime



Brick
Brick



Natural
Natural



Stone
Stone
