

---

# Glass Pad

---

*Studio G&R*  
2009



# Glass Pad

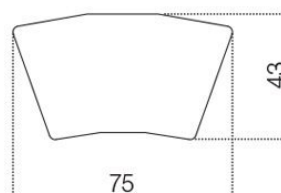
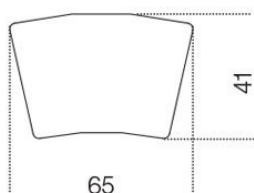
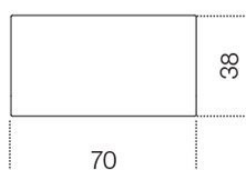
Studio G&R, 2009

*Sottomano in cristallo temperato  
retroverniciato satinato nei colori del  
campionario.*

*Tempered satin painted glass writing pad as  
per samples.*

*Dimensioni / Sizes  
70 x 38 x 0.6h cm  
65 x 41 x 0.6h cm Junior  
75 x 43 x 0.6h cm Senior*

*Inches  
27 $\frac{3}{4}$ " x 15" x 1/4"h  
25 $\frac{3}{4}$ " x 16 $\frac{1}{4}$ " x 1/4"h Junior  
29 $\frac{3}{4}$ " x 17" x 1/4"h Senior*



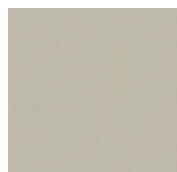
### *Cristallo / Glass*



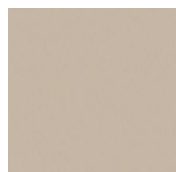
*Bianco satinato*  
*Satin white*



*Nero satinato*  
*Satin black*



*Cemento satinato*  
*Satin cement*



*Champagne satinato*  
*Satin champagne*



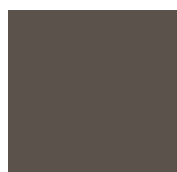
*Cipria satinato*  
*Satin rose powder*



*Cadet blue satinato*  
*Satin cadet blue*



*Oliva satinato*  
*Satin olive*



*Grigio beige satinato*  
*Satin taupe*



*Grigio umbro satinato*  
*Satin dark grey*



*Blu grigio satinato*  
*Satin blue grey*



*Liquirizia satinato*  
*Satin liquorice*



*Visone satinato*  
*Satin mink*