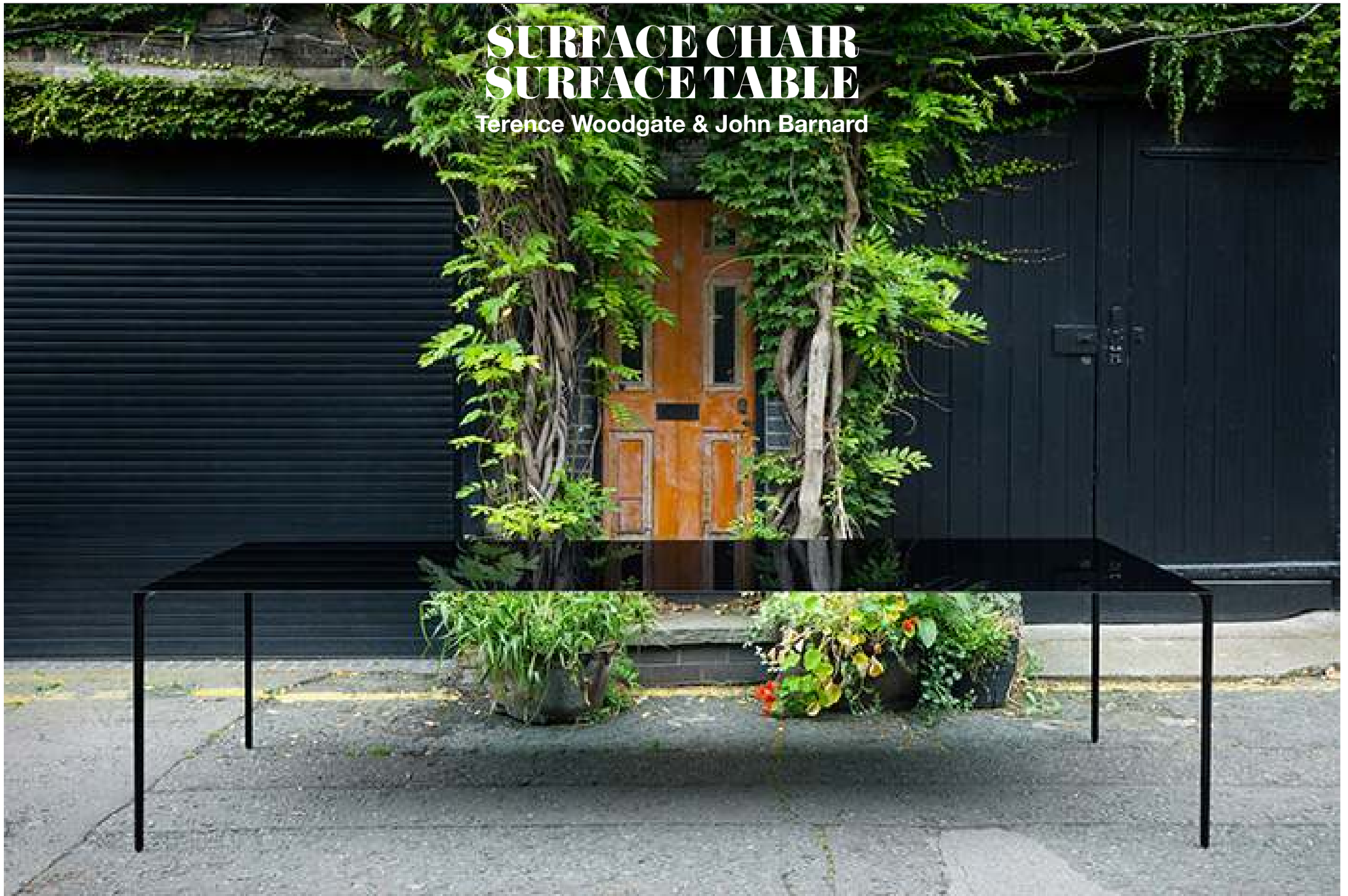


SURFACE CHAIR SURFACE TABLE

Terence Woodgate & John Barnard





Surface Chair
Terence Woodgate & John Barnard

Feather Weight
Our champion is strong and slender

Using cutting-edge technology this slim carbon fibre chair achieves the same impossibly thin aesthetic as the Surface Table. Its perfect proportions and seamless, woven carbon fibre surface bring to the design world the high-tech engineering and flowing lines of Formula 1 racing.



Surface Table **Terence Woodgate & John Barnard**

Feather Weight
Our champion is strong and slender

Two Royal Designers for Industry, one from the world of furniture design, and one from the world of Formula 1 racing car design, collaborated to create the Surface Table, a super-slim composite table. A true engineering accomplishment, the incredible Surface Table uses state-of-the-art auto-sport technology to exploit the inherent rigidity and strength of carbon fibre. The 2mm thick edge and long span defies the eye with its improbable lightness and solidity. Radius corners, round legs, domed feet and rounded edges accentuate the slimness and seamlessness of the design. architect's John Pawson's work by Alison Morris. 20:50 plays with viewer's perceptions of space by perfectly reflecting an entire room in a smooth black mirror of sump oil. 'The table being compared to a work of that importance made me realise that the reflection in the finish is extraordinary in its own right.' Terence Woodgate



Surface Chair Terence Woodgate & John Barnard

Design: 2009

Description: Chair

Dimensions:

L470mm × D500mm × H800mm,
seat height 440mm

Notes: Artisan material and process,
variations occur

Materials: Woven carbon fibre, lacquer
and carbon fibre (legs)

Colour: Natural carbon fibre, high gloss
lacquer with black lacquer legs



470 500





ksljaDHFkjadhjklhfkasdhf
 adfslkfjla;ksdfjl;akdsfj;lkadsfj
 adfl;dk;flka;lskfa;lkf;ldkf;as
 adslkdjflkadsjllkfdajfdlkjdaflkadsf
 adsfllkfdjllkfdjafdkjafllkfdjfs
 asdlkjflksadjllkjdfllkdaj



Surface Table

Terence Woodgate & John Barnard

Design: 2008

Description: Meeting, display or dining table

Dimensions:

L2400mm × D1000mm × H720mm

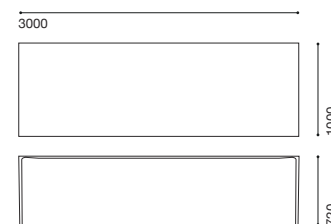
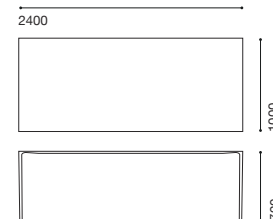
L3000mm × D1000mm × H720mm

Notes: Artisan material and process, variations occur, bespoke sizes quoted on request, dispatched assembled or part assembled on request

Materials: Unidirectional carbon fibre, lacquer, steel (legs)

Colours:

L2400, L3000: Unidirectional carbon fibre, high gloss lacquer/ matt lacquer with black lacquer legs





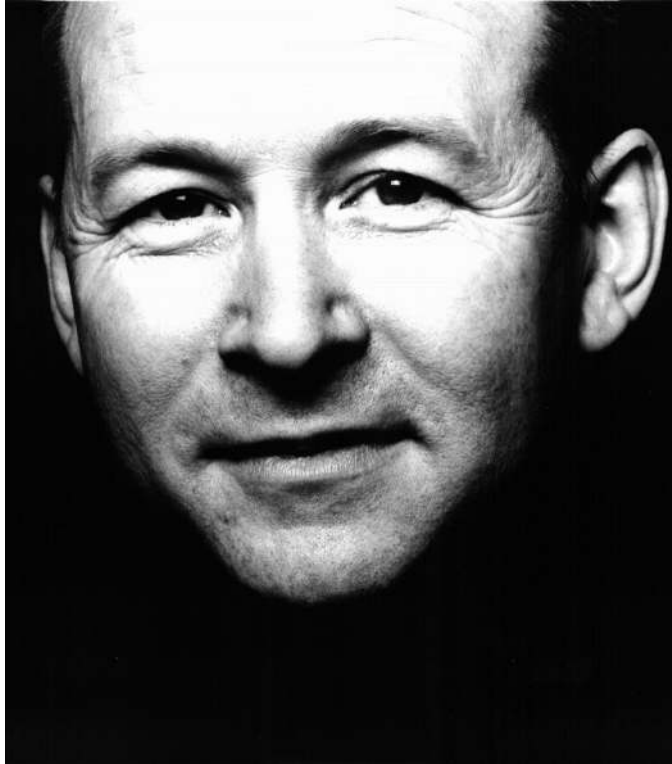




Terrence Woodgate

British Designer

Born 1953



A modernist at heart, he is known for his simple, thoughtful and understated designs. Woodgate works from his studio in East Sussex where he continues to quietly seek new expressions in design. In 2003 he was elected a Royal Designer for Industry (RDI). He has received several international design industry awards including the German Red Dot 'Best of the best' award and the IF ecology award. In the UK he has won the Observer/Elle Decoration design award for furniture and a Wallpaper* magazine design award. Examples of his work are held in the permanent collections of the Museu d'Arts Decoratives, Barcelona and the Victoria & Albert Museum, London.

John Barnard

British Design Engineer
Born 1946



John Barnard is one of the most innovative racing car design engineers of this generation. He was first thrown in the limelight after he won the USAC series and Indianapolis 500. He pioneered and built the world's first carbon fibre monocoque, winning three consecutive Formula One world championships for McLaren. Uniquely he has been technical director/ chief designer at both Ferrari and McLaren. Headhunted by Ferrari he pioneered for them the first hydro electronic gearbox, a system that is now used by all F1 teams. His system of using paddles on the steering wheel and an automatic clutch has now migrated to road cars. Asked to re-join Ferrari in 1992 he designed and built Ferraris in Guildford from 1993-1997. His Ferrari 641, one of the most beautiful Ferrari racing cars, is in the MoMa, New York permanent collection. His influence can be seen in every single car on the grid today.