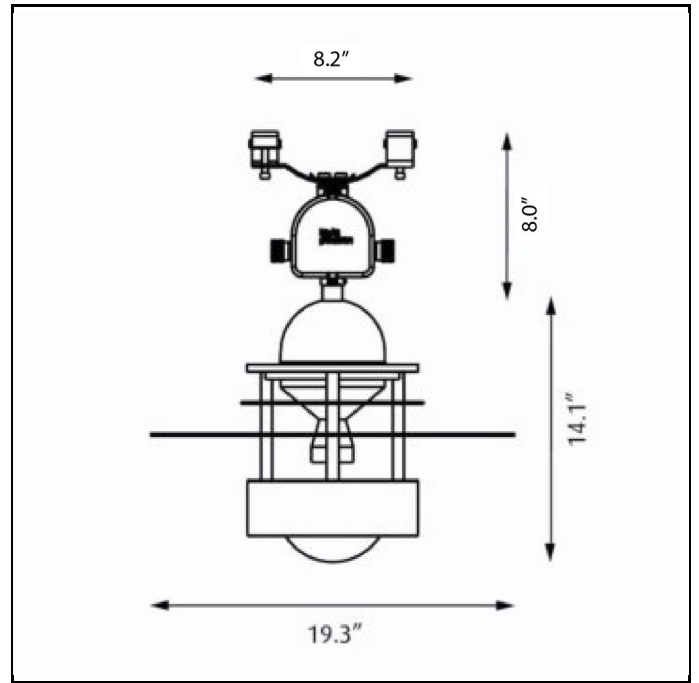


Planet Cable Hanger



Design Jens Møller-Jensen

Concept The fixture emits symmetrical light directed primarily downwards due to two reflector rings. However, the rings also permit some light to pass upwards, illuminating the fixture. The anti-glare ring prevents from horizontal glare. The diffuser is available either as clear, opal or partly frosted depending on the desired light source to prevent from vertical glare.

Finish Natural painted aluminum or white, powder coated.

Material Hanging hardware: Stainless steel. Cable compartment: Die cast aluminum. Diffuser: Injection molded clear polycarbonate (MH), injection molded partly frosted polycarbonate (CMH) or injection molded white opal polycarbonate (CF). Saturn ring: Die cut aluminum. Anti-glare ring: Spun aluminum. Top: Die cast aluminum.

Mounting Suspension type: Suspended from a through wiring cable hanger provided and by suspension cables by others.

Weight Max. 26 lbs.

Label cULus, Wet location. IBEW.

Product Code	Light source	Voltage	Finish
PLA-CH	1/100W/MH/ED-17 medium	120/277V	NAT PAINT ALU
	1/26W/32W/42W/CF GX24q-3/4	120-277V	WHT
	1/70W/CMH/T-6 G12		

Specification notes

a. CMH and MH variants provided with 120/277V ballast.

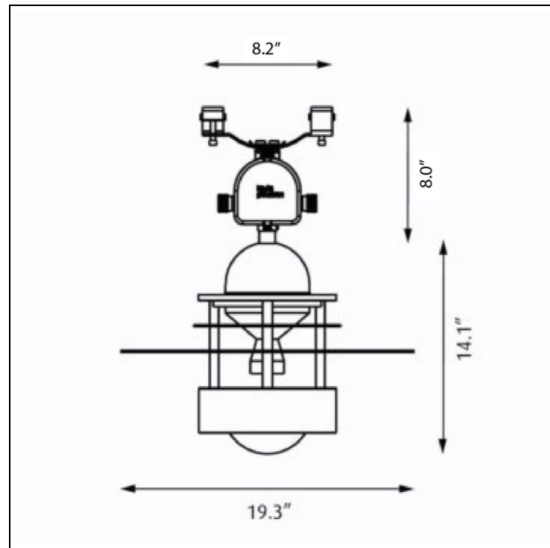
b. CF variants provide with 120-277V ballast.

Planet Cable Hanger

PLA-CH-MH

PRODUCT SPECIFICATION

Product description



Design Jens Møller-Jensen

Concept The fixture emits symmetrical light directed primarily downwards due to two reflector rings. However, the rings also permit some light to pass upwards, illuminating the fixture. The anti-glare ring prevents from horizontal glare. The diffuser is available either as clear, opal or partly frosted depending on the desired light source to prevent from vertical glare.

Finish Natural painted aluminum or white, powder coated.

Material Hanging hardware: Stainless steel. Cable compartment: Die cast aluminum. Diffuser: Injection molded clear polycarbonate (MH), injection molded partly frosted polycarbonate (CMH) or injection molded white opal polycarbonate (CF). Saturn ring: Die cut aluminum. Anti-glare ring: Spun aluminum. Top: Die cast aluminum.

Mounting Suspension type: Suspended from a through wiring cable hanger provided and by suspension cables by others.

Weight Max. 26 lbs.

Label cULus, Wet location. IBEW.

Product Code	Light source	Voltage	Finish
PLA-CH	1/100W/MH/ED-17 medium	120/277V	NAT PAINT ALU
	1/26W/32W/42W/CF GX24q-3/4	120-277V	WHT
	1/70W/CMH/T-6 G12		

Specification notes

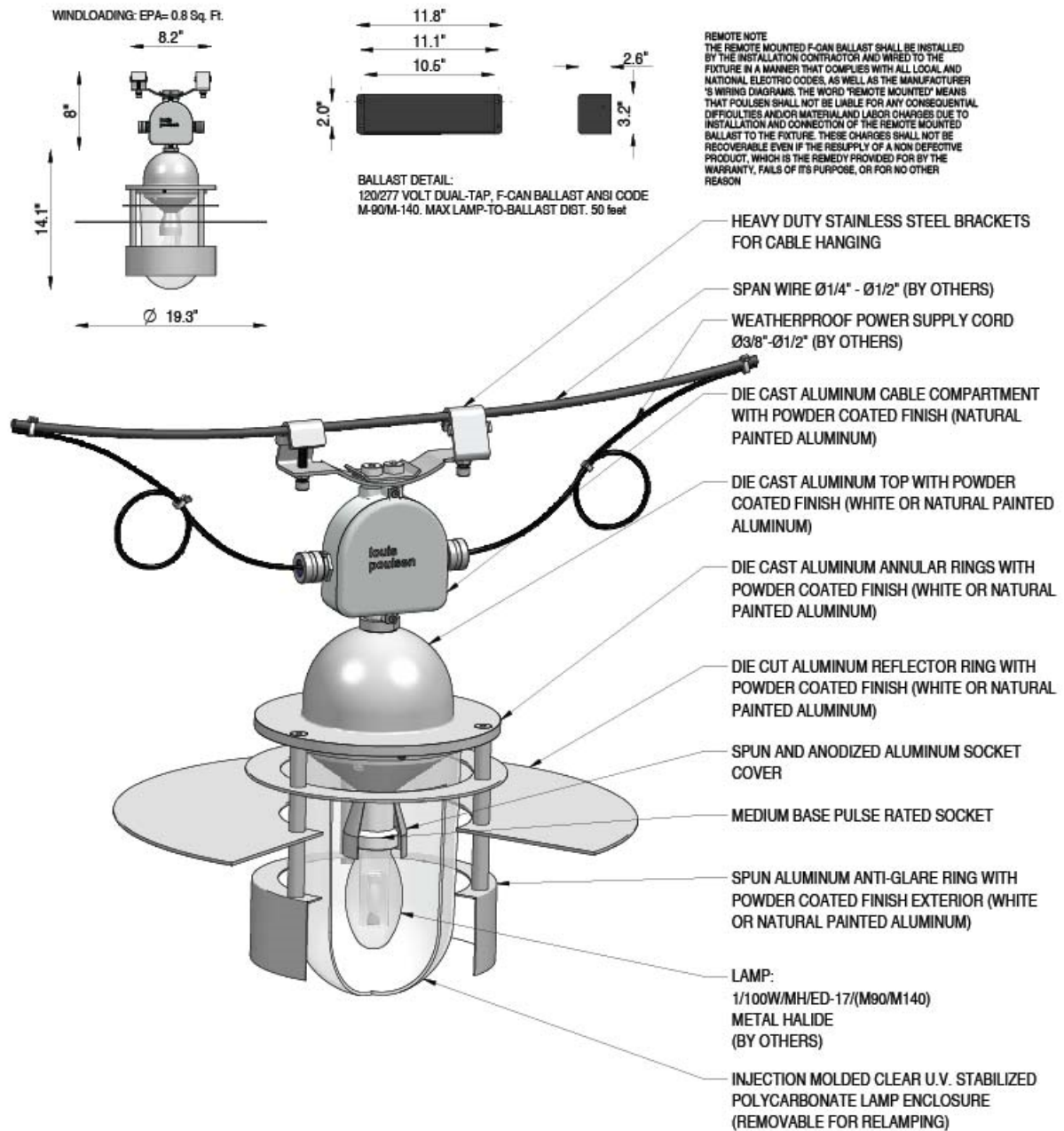
- CMH and MH variants provided with 120/277V ballast.
- CF variants provide with 120-277V ballast.

Planet Cable Hanger

PLA-CH-MH

PRODUCT SPECIFICATION

Material description



Planet Cable Hanger

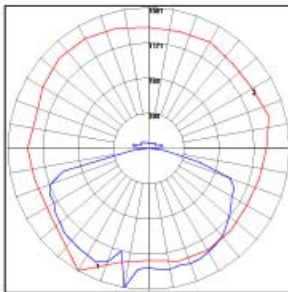
PLA-CH-MH

PRODUCT SPECIFICATION

Light Measurements

Photometric Report: PLA-CH-1-100W-MH-WHITE
 Report No.: LP1074
 Poulsen Report No.: PLA-CH-1-100W-MH-WHITE
 Luminaire: PLANET CABLE HANGER
 Lamp: 1/100W/MH/ED-17
 Efficiency: 77%

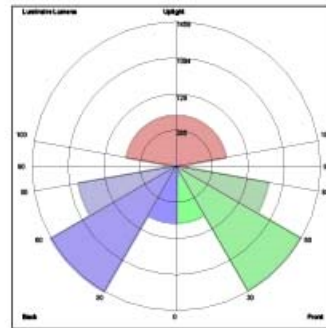
Description: All data shown are per 8800 lumens. This report can be used for calculation on all versions listed below. Use only actual lumen data calculating.



Candlepower Distribution	
Vertical Angle	Candela
0	1315.6
5	1256.4
15	1360.7
25	1388.8
35	1341.0
45	1267.7
55	1228.3
65	1129.7
75	774.7
90	0.0
120	95.7
150	67.6
180	58.1

Zonal Lumen Summary

Zone	Lumens	% Lamp	% Fixture
0-20	510.59	5.80	7.60
0-30	1139.58	12.90	16.90
0-40	1975.07	22.40	29.20
0-60	4044.49	46.00	59.80
0-80	5990.96	68.10	88.70
0-90	6142.74	69.80	90.90
10-90	6014.62	68.30	89.00
20-40	1464.48	16.60	21.70
20-50	2453.18	27.90	36.30
40-70	3203.83	36.40	47.40
60-80	1946.47	22.10	28.80
70-80	612.05	9.20	12.00
80-90	151.78	1.70	2.20
90-110	264.52	3.00	3.90
90-120	353.79	4.00	5.20
90-130	438.98	5.00	6.50
90-150	559.29	6.40	8.30
90-180	615.15	7.00	9.10
110-180	350.62	4.00	5.20
0-180	6757.88	76.80	100.00



LUMINAIRE CLASSIFICATION SYSTEM (LCS)

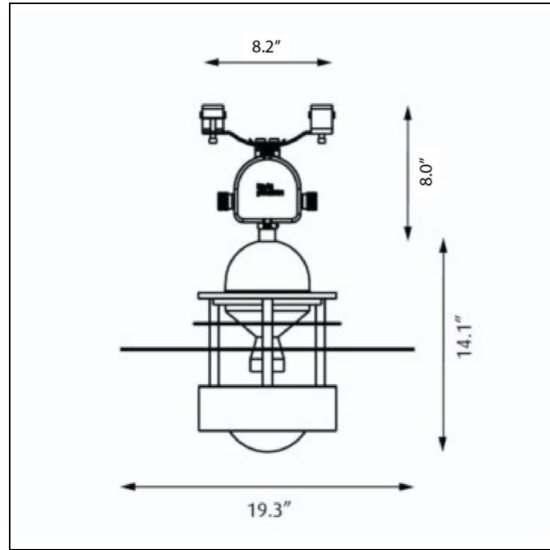
	Lumens	% Lamp	% Luminaire
FL - Front-Low (0-30)	570.8	6.5	8.4
FM - Front-Medium (30-60)	1448.0	16.4	21.4
FH - Front-High (60-80)	945.6	10.7	14.0
FVH - Front-Very High (80-90)	69.7	0.8	1.0
BL - Back-Low (0-30)	588.9	6.5	8.4
BM - Back-Medium (30-60)	1458.9	16.6	21.6
BH - Back-High (60-80)	1000.9	11.4	14.8
BVH - Back-Very High (80-90)	82.1	0.9	1.2
UL - Uplight-Low (90-100)	108.6	1.2	1.6
UH - Uplight-High (100-180)	508.6	5.8	7.5
Total	6757.9	76.8	100.0
BUG Rating	B3-U4-G1		

Planet Cable Hanger

PLA-CH-CMH

PRODUCT SPECIFICATION

Product description



Design Jens Møller-Jensen

Concept The fixture emits symmetrical light directed primarily downwards due to two reflector rings. However, the rings also permit some light to pass upwards, illuminating the fixture. The anti-glare ring prevents from horizontal glare. The diffuser is available either as clear, opal or partly frosted depending on the desired light source to prevent from vertical glare.

Finish Natural painted aluminum or white, powder coated.

Material Hanging hardware: Stainless steel. Cable compartment: Die cast aluminum. Diffuser: Injection molded clear polycarbonate (MH), injection molded partly frosted polycarbonate (CMH) or injection molded white opal polycarbonate (CF). Saturn ring: Die cut aluminum. Anti-glare ring: Spun aluminum. Top: Die cast aluminum.

Mounting Suspension type: Suspended from a through wiring cable hanger provided and by suspension cables by others.

Weight Max. 26 lbs.

Label cULus, Wet location. IBEW.

Product Code	Light source	Voltage	Finish
PLA-CH	1/100W/MH/ED-17 medium	120/277V	NAT PAINT ALU
	1/26W/32W/42W/CF GX24q-3/4	120-277V	WHT
	1/70W/CMH/T-6 G12		

Specification notes

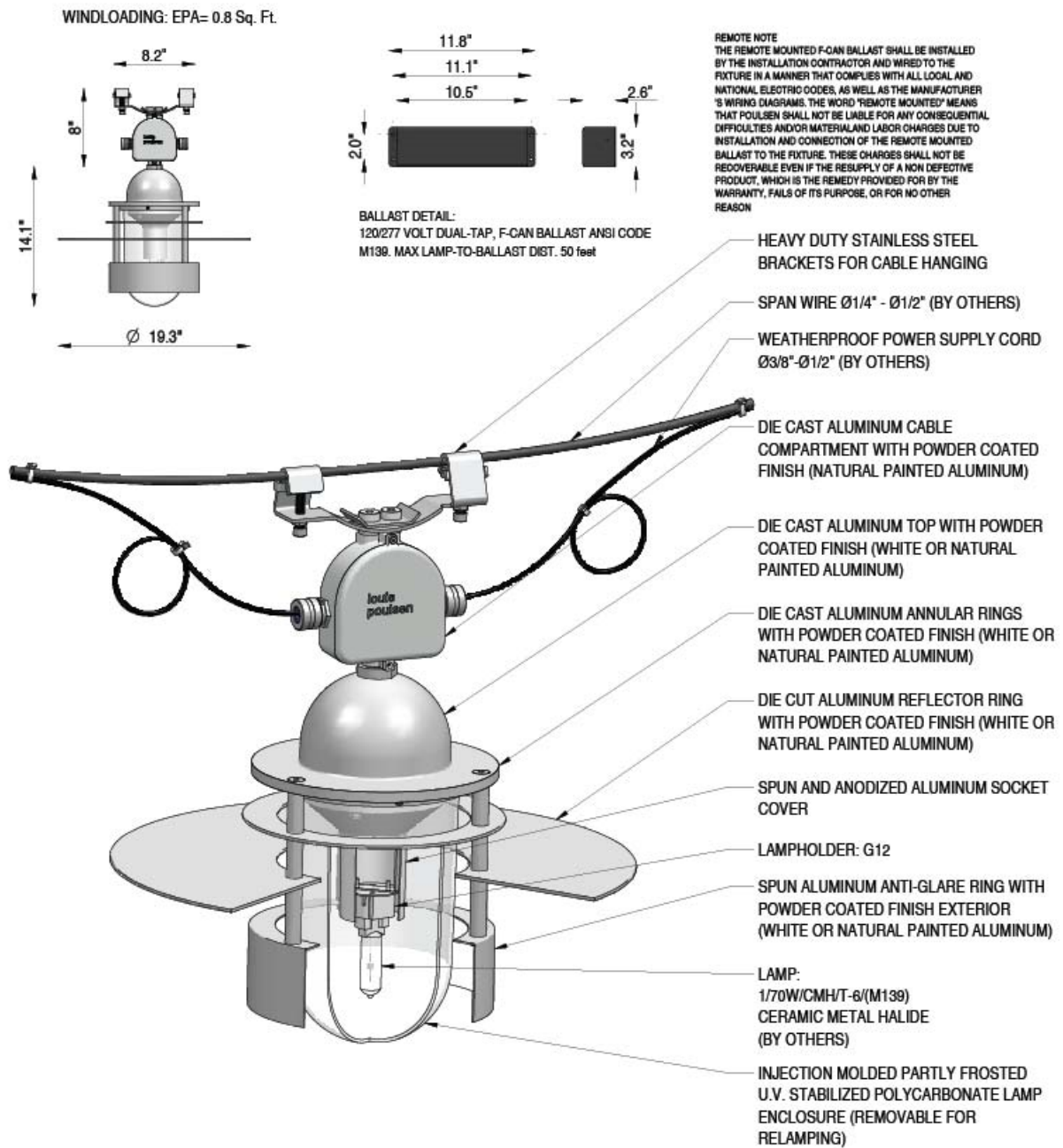
- a. CMH and MH variants provided with 120/277V ballast.
- b. CF variants provide with 120-277V ballast.

Planet Cable Hanger

PLA-CH-CMH

PRODUCT SPECIFICATION

Material description



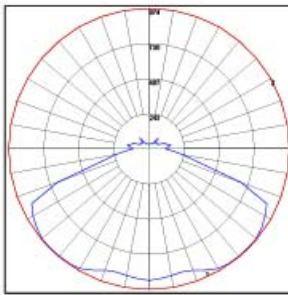
Planet Cable Hanger

PLA-CH-CMH

PRODUCT SPECIFICATION

Light Measurements

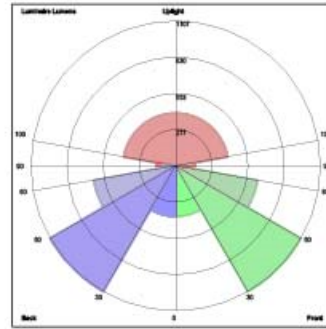
Photometric Report: PLA-CH-1-70W-CMH-WHITE
 Report No.: 6041902002 Louis Poulsen Lighting A/S
 Poulsen Report No.: PLA-CH-1-70W-CMH-WHITE
 Luminaire: PLANET CABLE HANGER
 Lamp: 1/70W/CMH/T-6 G12
 Efficiency: 75%
 Description: All data shown are per 6600 lumens. This report can be used for calculation on all versions listed below. Use only actual lumen data calculating.



Candlepower Distribution	
Vertical Angle	Candela
0	910.3
5	902.0
15	883.5
25	928.1
35	969.5
45	973.9
55	952.9
65	900.4
75	343.9
90	112.2
120	72.2
150	40.3
180	34.5

Zonal Lumen Summary

Zone	Lumens	% Lamp	% Fixture
0-20	337.73	5.10	6.80
0-30	767.47	11.60	15.40
0-40	1374.91	20.80	27.60
0-60	2980.76	45.20	59.80
0-80	4249.54	64.40	85.30
0-90	4436.33	67.20	89.10
10-90	4350.47	65.90	87.40
20-40	1037.19	15.70	20.60
20-50	1789.86	27.10	35.90
40-70	2450.89	37.10	49.20
60-80	1258.77	19.20	25.50
70-80	423.74	6.40	8.50
80-90	186.79	2.80	3.80
90-110	281.46	4.30	5.70
90-120	361.00	5.50	7.20
90-130	421.88	6.40	8.50
90-150	511.87	7.80	10.30
90-180	544.07	8.20	10.90
110-180	262.61	4.00	5.30
0-180	4980.4	75.50	100.00



LUMINAIRE CLASSIFICATION SYSTEM (LCS)

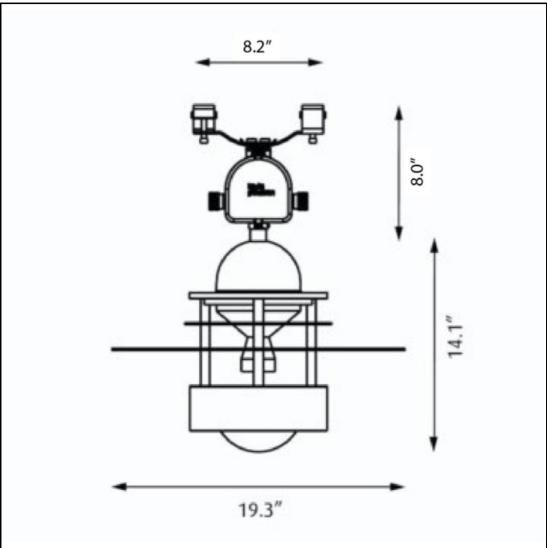
	Lumens	% Lamp	% Luminaire
FL - Front-Low (0-30)	383.7	5.8	7.7
FM - Front-Medium (30-60)	1108.6	16.8	22.2
FH - Front-High (60-80)	834.4	9.6	12.7
FVH - Front-Very High (80-90)	93.4	1.4	1.9
BL - Back-Low (0-30)	383.7	5.8	7.7
BM - Back-Medium (30-60)	1108.6	16.8	22.2
BH - Back-High (60-80)	834.4	9.6	12.7
BVH - Back-Very High (80-90)	93.4	1.4	1.9
UL - Uplight-Low (90-100)	144.0	2.2	2.9
UH - Uplight-High (100-180)	400.1	6.1	8.0
Total	4980.3	75.5	100.0
BUG Rating	B2-U3-G1		

Planet Cable Hanger

PLA-CH-CF

PRODUCT SPECIFICATION

Product description



- Design** Jens Møller-Jensen
- Concept** The fixture emits symmetrical light directed primarily downwards due to two reflector rings. However, the rings also permit some light to pass upwards, illuminating the fixture. The anti-glare ring prevents from horizontal glare. The diffuser is available either as clear, opal or partly frosted depending on the desired light source to prevent from vertical glare.
- Finish** Natural painted aluminum or white, powder coated.
- Material** Hanging hardware: Stainless steel. Cable compartment: Die cast aluminum. Diffuser: Injection molded clear polycarbonate (MH), injection molded partly frosted polycarbonate (CMH) or injection molded white opal polycarbonate (CF). Saturn ring: Die cut aluminum. Anti-glare ring: Spun aluminum. Top: Die cast aluminum.
- Mounting** Suspension type: Suspended from a through wiring cable hanger provided and by suspension cables by others.
- Weight** Max. 26 lbs.
- Label** cULus, Wet location. IBEW.

Product Code	Light source	Voltage	Finish
PLA-CH	1/100W/MH/ED-17 medium	120/277V	NAT PAINT ALU
	1/26W/32W/42W/CF GX24q-3/4	120-277V	WHT
	1/70W/CMH/T-6 G12		

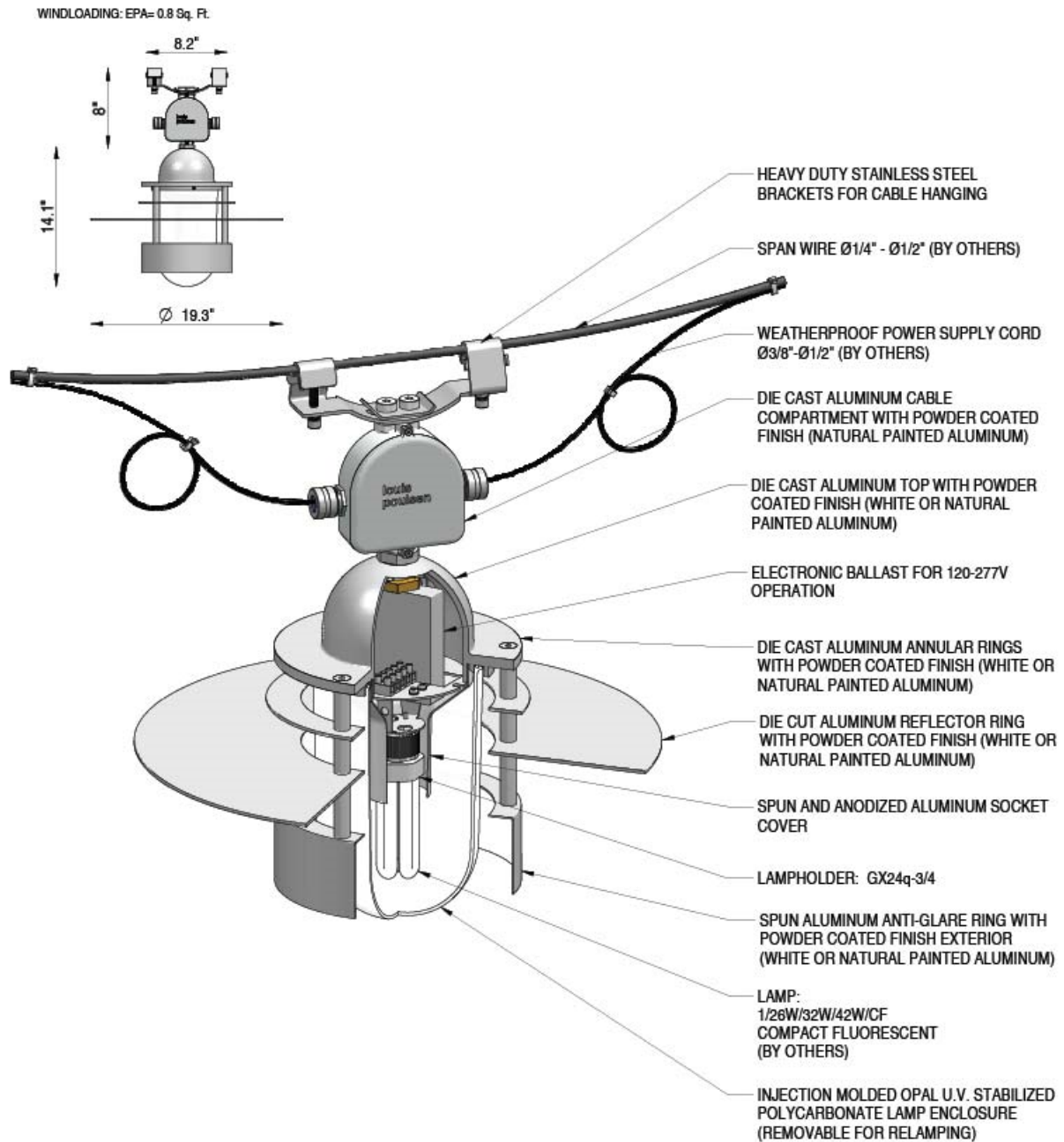
Specification notes
 a. CMH and MH variants provided with 120/277V ballast.
 b. CF variants provide with 120-277V ballast.

Planet Cable Hanger

PLA-CH-CF

PRODUCT SPECIFICATION

Material description



Planet Cable Hanger

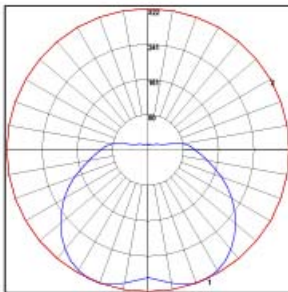
PLA-CH-CF

PRODUCT SPECIFICATION

Light Measurements

Photometric Report: PLA-CH-1-42W-CF-WHITE
 Report No.: Louis Poulsen Lighting A/S
 Poulsen Report No.: PLA-CH-1-42W-CF-WHITE
 Luminaire: PLANET CABLE HANGER
 Lamp: 1/42W/CF/GX24q-4
 Efficiency: 51%

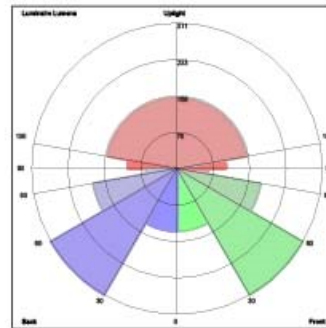
Description: All data shown are per 3200 lumens. This report can be used for calculation on all versions listed below. Use only actual lumen data calculating.



Candlepower Distribution	
Vertical Angle	Candela
0	289.8
5	297.5
15	316.1
25	321.8
35	307.4
45	277.8
55	240.5
65	199.7
75	155.0
90	107.8
120	27.2
150	14.2
180	12.1

Zonal Lumen Summary

Zone	Lumens	% Lamp	% Fixture
0-20	118.23	3.70	7.20
0-30	266.54	8.30	16.30
0-40	458.84	14.30	28.00
0-60	888.87	27.80	54.20
0-80	1251.87	39.10	76.30
0-90	1384.92	43.30	84.50
10-90	1356.24	42.40	82.70
20-40	340.61	10.60	20.80
20-50	555.20	17.40	33.90
40-70	627.61	19.60	38.30
60-80	363.00	11.30	22.10
70-80	165.23	5.20	10.10
80-90	133.04	4.20	8.10
90-110	168.00	5.30	10.20
90-120	198.35	6.20	12.10
90-130	220.20	6.90	13.40
90-150	243.41	7.60	14.80
90-180	254.88	8.00	15.50
110-180	86.88	2.70	5.30
0-180	1639.8	51.20	100.00



LUMINAIRE CLASSIFICATION SYSTEM (LCS)

	Lumens	% Lamp	% Luminaire
FL - Front-Low (0-30)	133.3	4.2	8.1
FM - Front-Medium (30-60)	311.2	9.7	19.0
FH - Front-High (60-80)	181.5	5.7	11.1
FVH - Front-Very High (80-90)	66.5	2.1	4.1
BL - Back-Low (0-30)	133.3	4.2	8.1
BM - Back-Medium (30-60)	311.2	9.7	19.0
BH - Back-High (60-80)	181.5	5.7	11.1
BVH - Back-Very High (80-90)	66.5	2.1	4.1
UL - Uplight-Low (90-100)	104.9	3.3	6.4
UH - Uplight-High (100-180)	150.0	4.7	9.1
Total	1639.9	51.4	100.0
BUG Rating	B1-U3-G1		

Planet Cable Hanger

Design: Jens Møller Jensen



120/277V
120-277V



G12
GX24q-3/4
medium



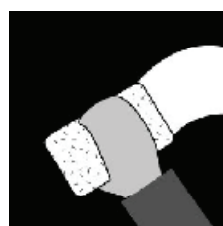
26 Lbs



Damp location

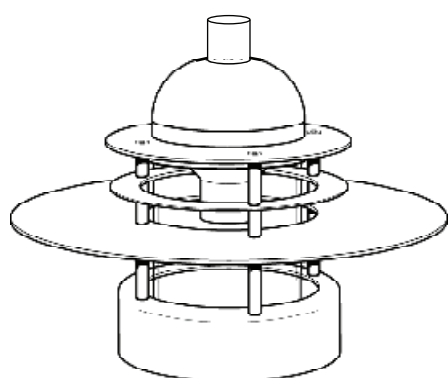
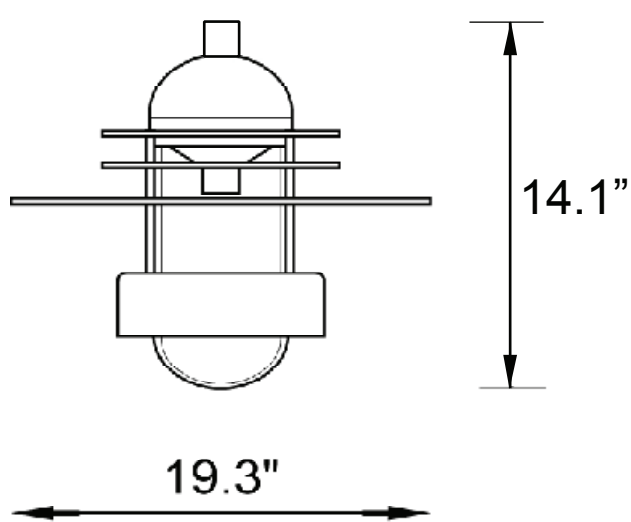


Grounded



Recommended cleaning substance: Mild detergent and hot water (max 120F ~ 50C)
Never use detergents containing alcohol.
Warning: Scouring powder and similar substances will scratch plastic surfaces.

All installation is subject to local code and jurisdiction.
Consult a qualified electrician to ensure correct branch circuit conductor.
The installer must ensure that the ceiling can support the luminaire's weight.
The installer must if necessary reinforce the ceiling structure by adequate means.



Headoffice
Denmark
Louis Poulsen Lighting
A/S.
Tel: +45 33 14 14 14
Fax: +45 33 14 60 62
www.louis-poulsen.dk

Export Division
Louis Poulsen Lighting
A/S.
Tel: +45 33 31 11 66
Fax: +45 33 29 86 46

France
Louis Poulsen & Cie
Tel: +33 1 49 59 68 68
Fax: +33 1 49 59 68 69
www.louis-poulsen.fr

Holland
Louis Poulsen B.V.
Tel: +31 23 5650030
Fax: +31 23 5652284
www.louis-poulsen.nl

Norway
Louis Poulsen & Co. A/S
Tel: +47 22 50 20 20
Fax: +47 22 52 47 05
www.louis-poulsen.no

Switzerland
Louis Poulsen AG
Tel: +41 1 733 70 40
Fax: +41 1 733 70 50
www.louis-poulsen.ch

USA
Louis Poulsen Lighting,
Inc.
Tel: +1 954-349-2525
Fax: +1 954-349-2550
www.louispoulsen.com

Denmark
Frontdesk
Tel: +45 33 31 11 66
Fax: +45 33 29 86 45

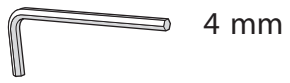
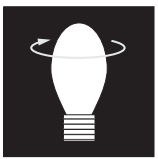
Finland
Louis Poulsen Oy
Tel: +358 9 6226 760
Fax: +358 9 6226 7650
www.louis-poulsen.fi

Germany
Louis Poulsen & Co.
GmbH
Tel: +49 2103 940 0
Fax: +49 2103 940 290
www.louis-poulsen.de

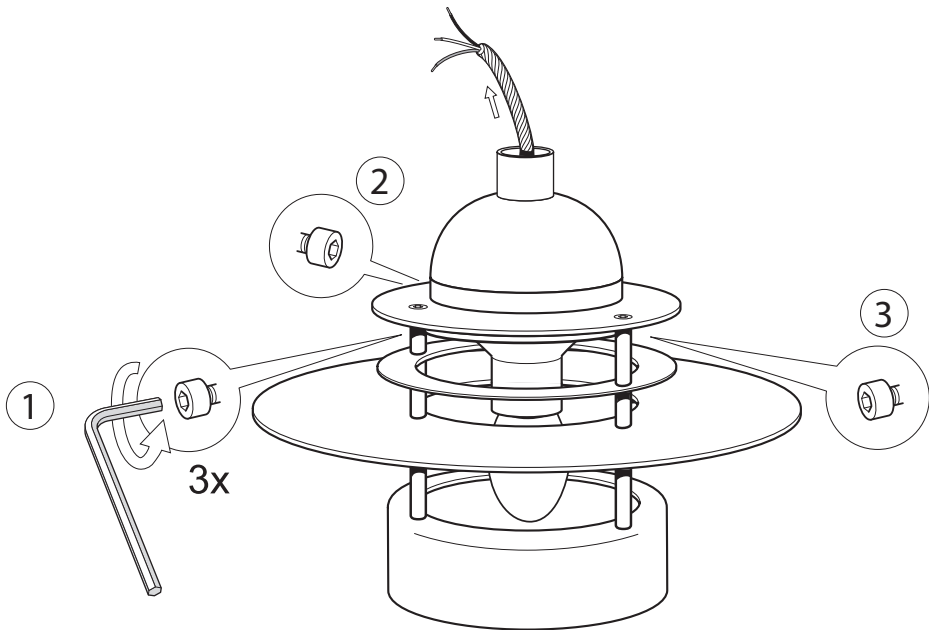
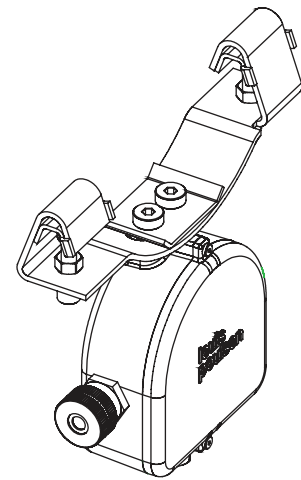
Japan
Louis Poulsen Japan KK
Tel: +81 3 3586 5341
Fax: +81 3 3586 0478

Sweden
Louis Poulsen & Co. AB
Tel: +46 8 446 48 00
Fax: +46 8 446 48 28
www.louis-poulsen.se

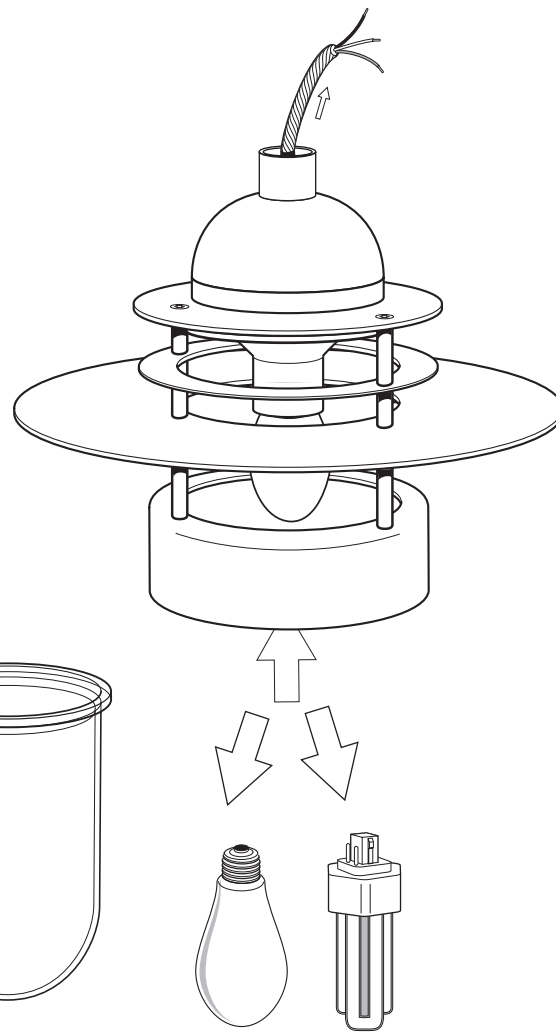
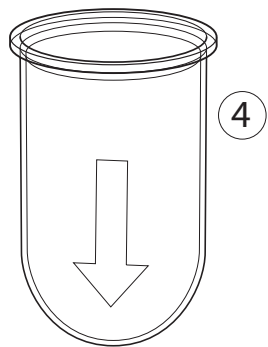
United Kingdom
Louis Poulsen UK Ltd.
Tel: +44 1372 848 800
Fax: +44 1372 848 801
www.louis-poulsen.co.uk



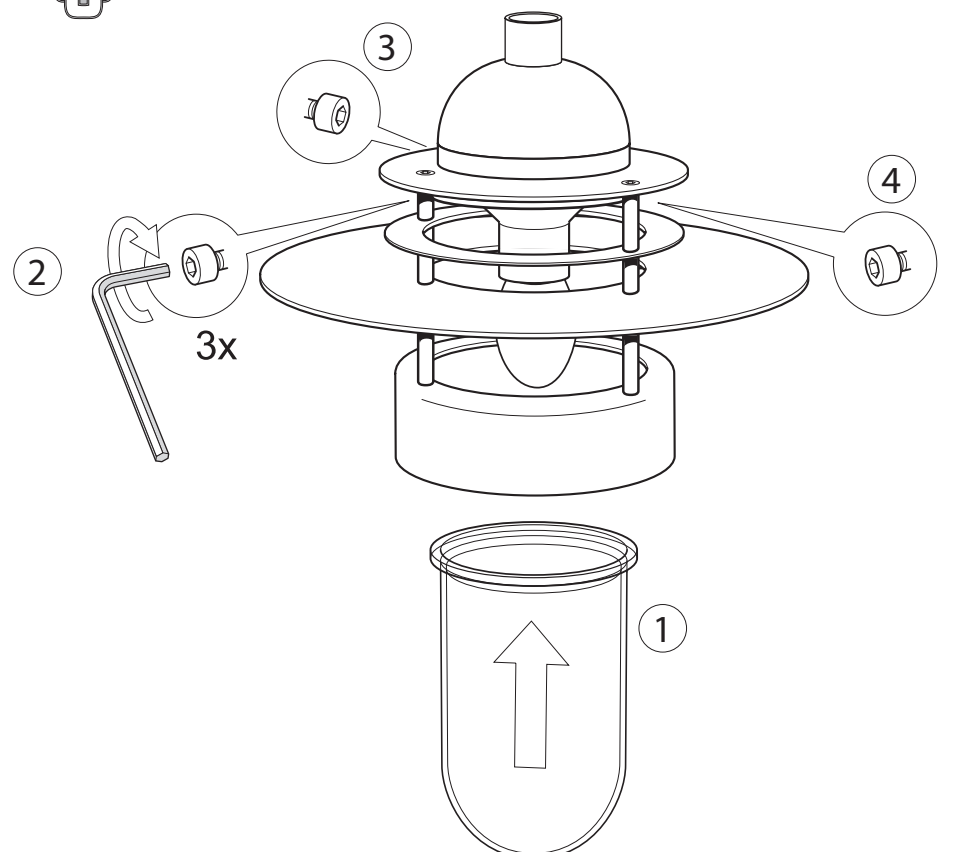
See further mounting instructions in the manual supplied with the cable hanger



Do NOT remove screws !

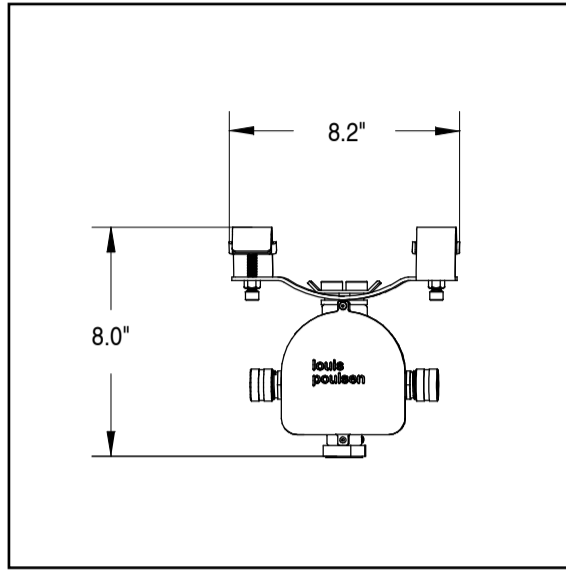
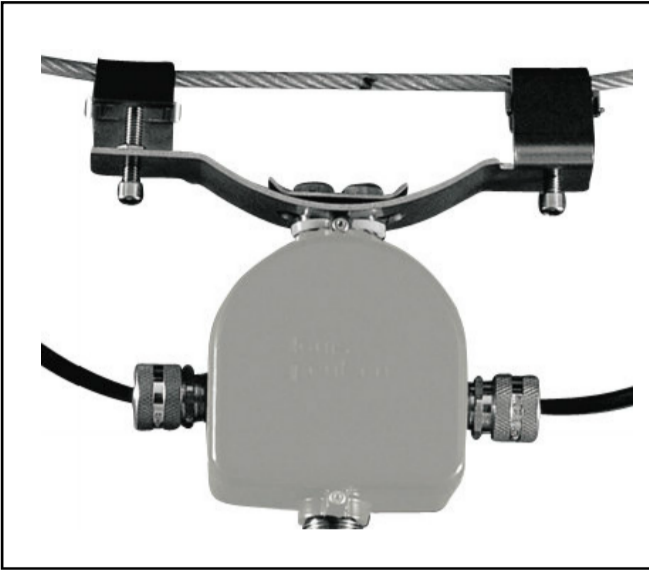


Use only light source in accordance to the lamp Replacement label on the luminaire



Cable hanger

Design Alfred Homann



1440116000

Recommended cleaning substances:

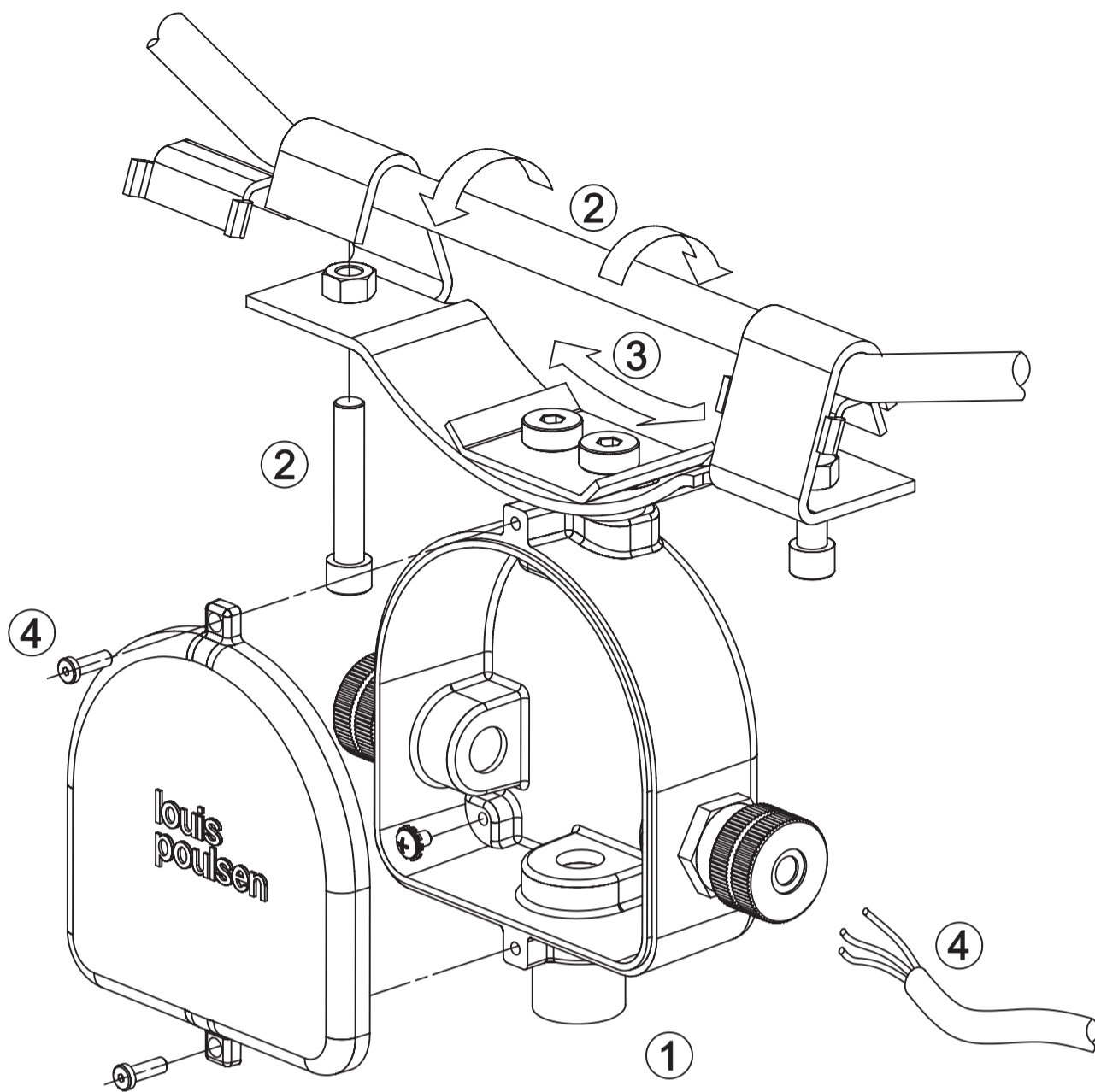
Wipe off dust with a dry, soft cloth. Remove greasy spots etc. with a soft cloth dampened in lukewarm water (<math><122^{\circ}</math> F/

Warning: Scouring powder and similar substances will scratch surfaces.

All installation is subject to local code and jurisdiction.

Consult a qualified electrician to ensure correct branch circuit conductor.

The installer must ensure that the foundation is stable and can support the luminaire's weight.



Step 1:
Attach Wiring Compartment to top of luminaire and bring wires into Wire Compartment through lower nipple.

Step 2:
Loosen span wire clamping bolts and engage mounting bracket over span wire (By others). Let luminaire hang free and then tighten clamping bolts. Use hex nuts to lock clamping bolts in tight position.

Step 3:
Loosen hanging bolts one turn and let luminaire hang free. Tighten hanging bolts again.

Step 4:
Open Wiring Compartment . Bring sow cable (By others) through water tight fitting. Wire luminaire according to enclosed wiring diagram. Close Wiring Compartment making sure gasket is properly seated.

NOTE: Water tight fitting uses different inserts for four different size ranges of cable O.D. (See wiring diagram)

WARNING: Hanging Bracket is designed to accept span wires from 1/4" O.D. to 1/2" O.D.. It is the installer's responsibility to make sure that the span wire selected is appropriate for the static and dynamic loads imposed by the luminaire and its attachments. Wiring Compartment is designed for attachment to a single luminaire head up to 60 Lb..

WIRING DIAGRAM

