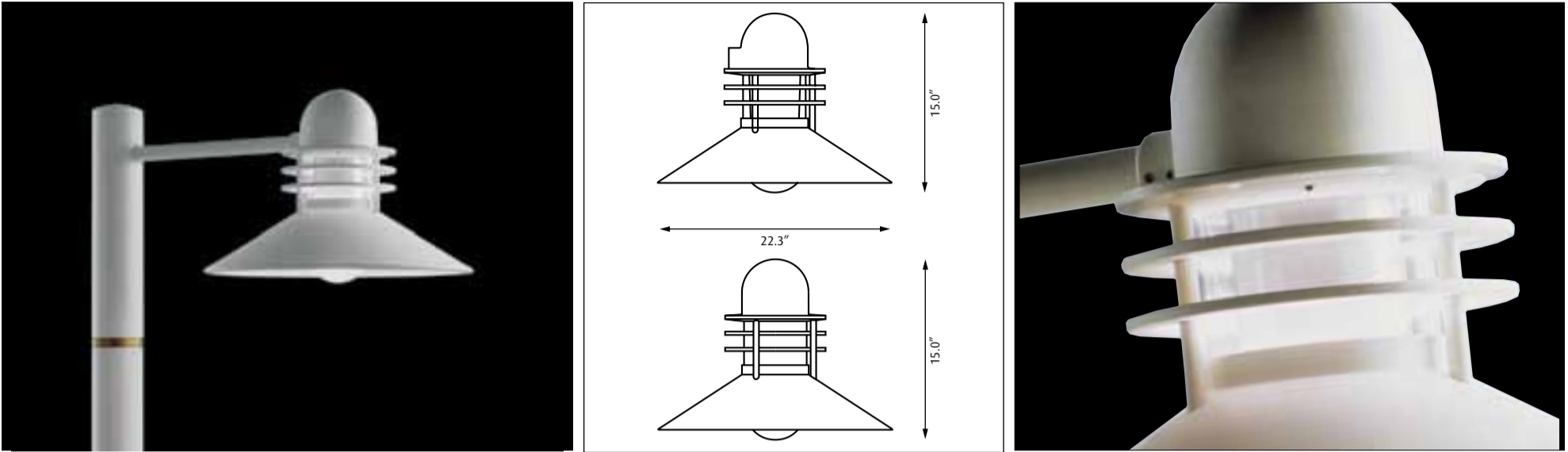


Design Alfred Homann



Light source	Voltage	Weight	Electric shock protection	Ingress protection
1/100W/MH/ED-17 medium 1/70W/CMH/T-6 G12 1/26W/32W/42W/CF Gx24q-3/4	120/277 V 120-277 V	17 lbs	Cl.	IP 44, Wet lacion

Recommended cleaning substances:
Wipe off dust wiht a dry, soft cloth. Remove greasy spots etc. with a soft cloth dampe-
ned in lukewarm water (<122° F/ 50° C) with a mild detergent.

Warning: Scouring powder and similar substances will scratch surfaces.

All installation is subject to local code and jurisdiction.

Consult a qualified electrician to ensure correct branch circuit conductor.

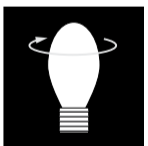
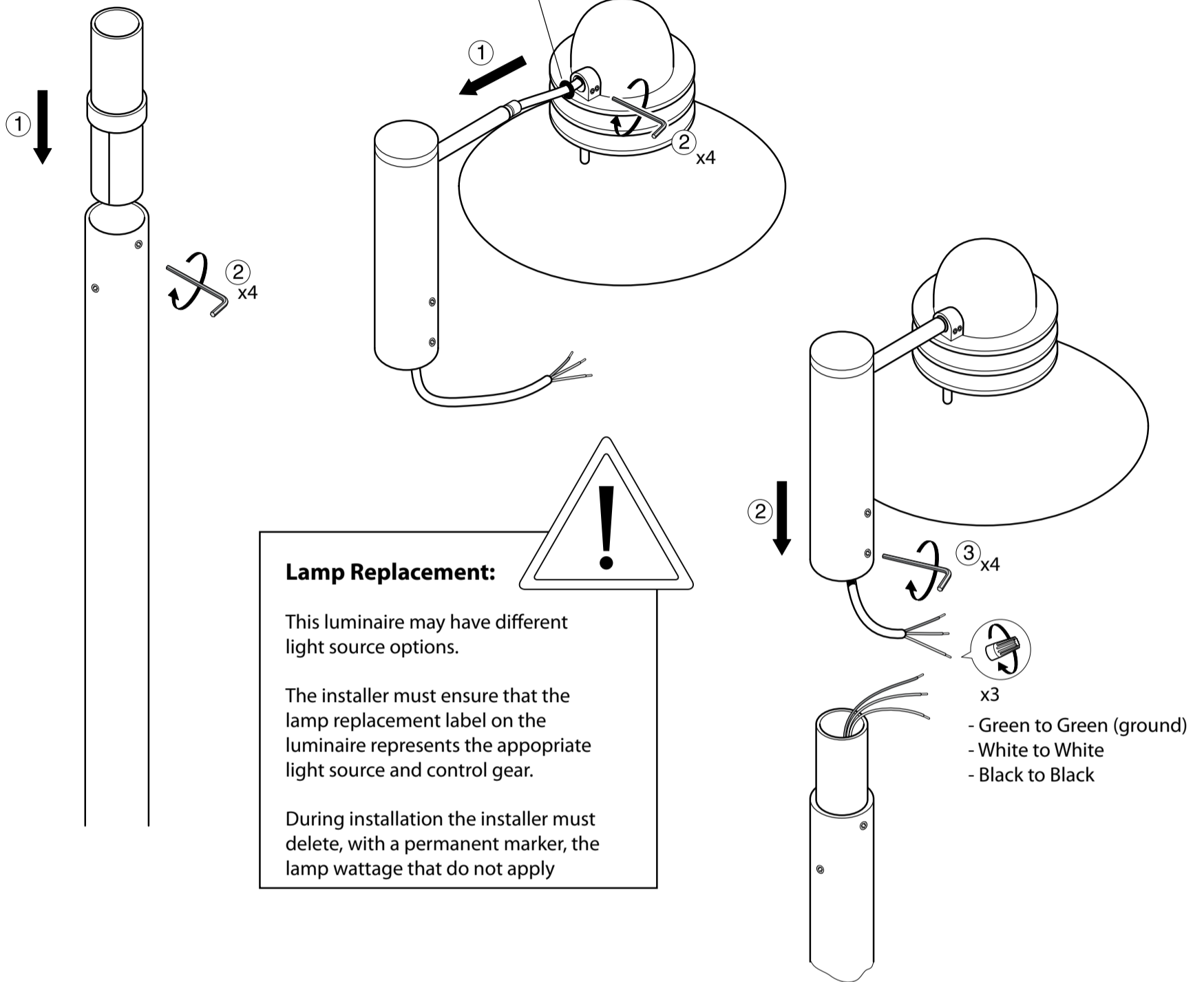
The installer must ensure that the foundation is stable and can support the luminiare’s weight.

The Installer must use proper means to secure the luminiare to the ground.



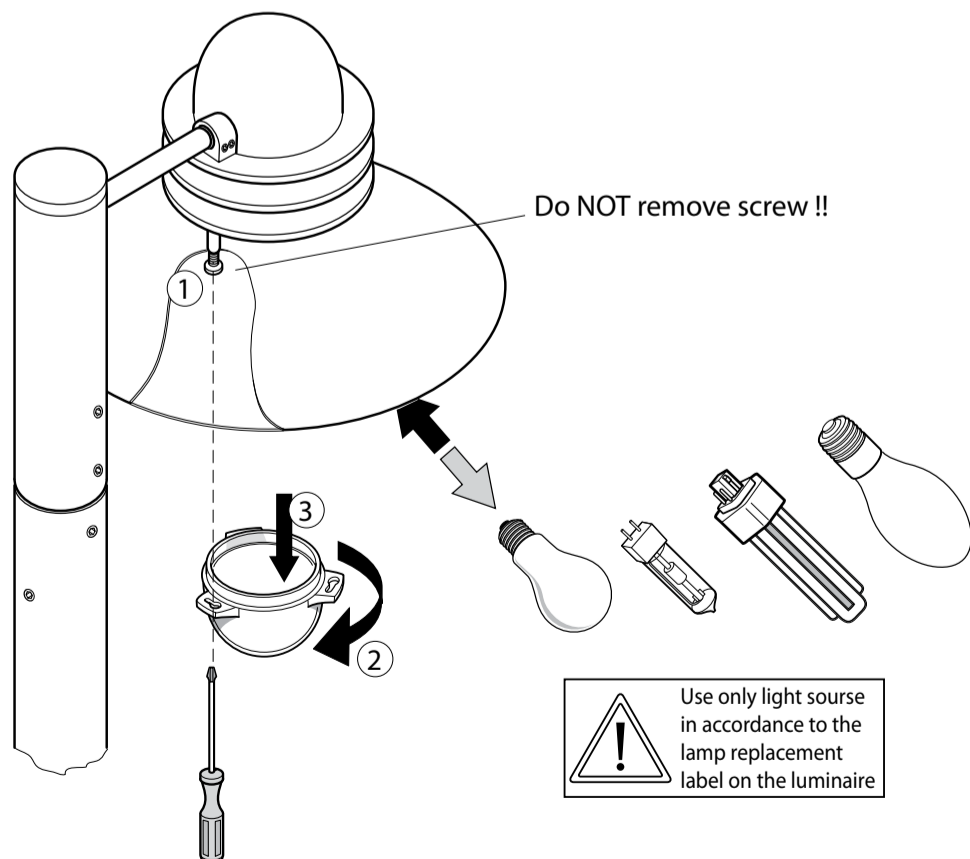
3mm
4mm

59475-I1



Re-lamping:

1. Remove the polycarbonate shade by loosening the screw.
2. Replace the light source. Remount the shade and tighten the screw.

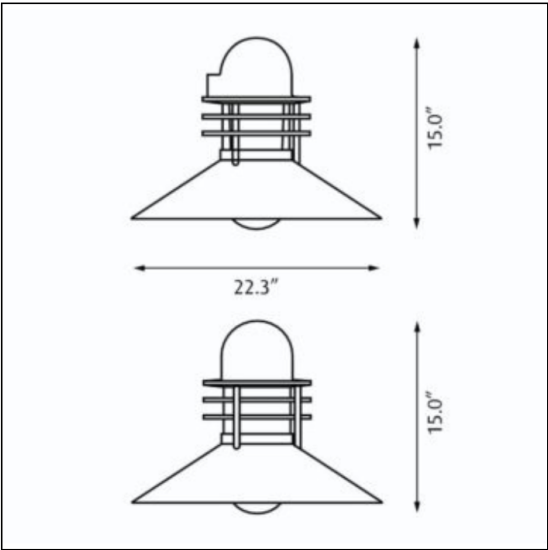


Nyhavn Post

NYPT-CF

PRODUCT SPECIFICATION

Product description



Design Alfred Homann

Concept The conical shade ensures comfortable light that is directed downwards in a wide beam. The shade interior has a white matte painted surface, ensuring uniform light distribution. The rings ensure that a stray light is controlled, and direct a small amount of light onto the top side of the shade for self-illumination.

Finish Natural painted aluminum or white, powder coated.

Material Shades: Spun aluminum. Diffuser: Injection molded clear polycarbonate, injection molded partly frosted polycarbonate or injection molded white opal polycarbonate. Rings: Die cast aluminum. Top: Die cast aluminum.

Mounting Post top: Mounted on triangular (TRI), davit (DAV), or straight (SRA) arm.

Weight Max. 17 lbs.

Label cULus, Wet location. IBEW.

Product Code	Light source	Voltage	Finish	Diff./Encl./Glass
NYH-PT	1/100W/MH/ED-17 medium	120/277V	NAT PAINT ALU	NOT APPLICABLE
	1/26W/32W/42W/CF GX24q-3/4	120-277V	WHT	OPAL
	1/70W/CMH/T-6 G12			

Specification notes

- a. CMH variant provided with a partly frosted diffuser.
- b. CF variant provided with an opal diffuser.
- c. MH variant provided with clear diffuser.
- d. CMH and MH variant provided with one 120/277V F-can style ballast to be mounted in the pole.
- e. CF variant provided with an universal wattage socket and one 120-277V integral electronic ballast.
- f. TRI and DAV variants are provided with top entry.
- g. SRA variant provided with side entry.

Info notes

- I. All enclosures are U.V. stabilized polycarbonate.
- II. For pole selection, refer to Pole page.
- III. The comparable EU version has the following classification: Ingress Protection Code: IP44.

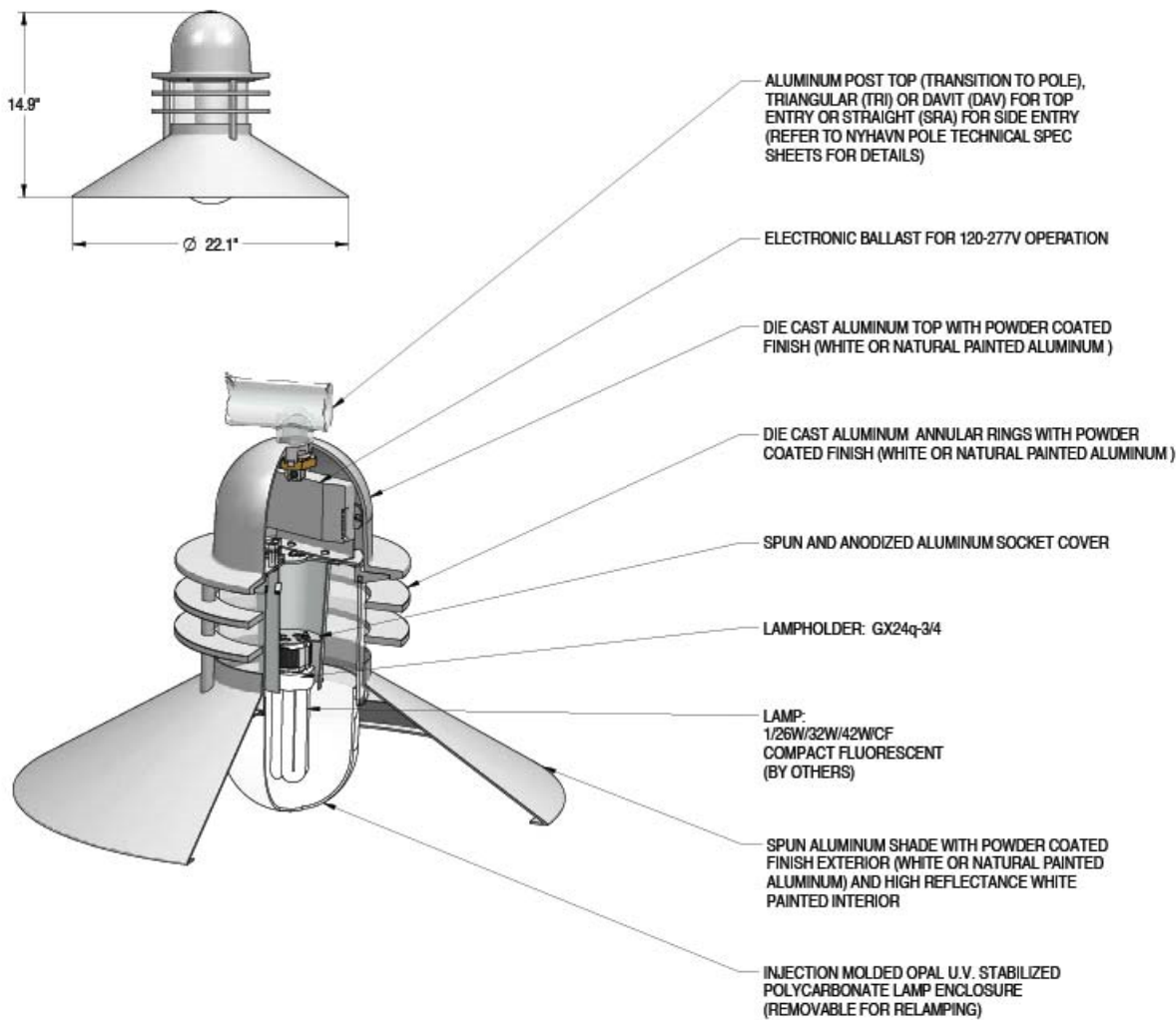
Nyhavn Post

NYPT-CF

PRODUCT SPECIFICATION

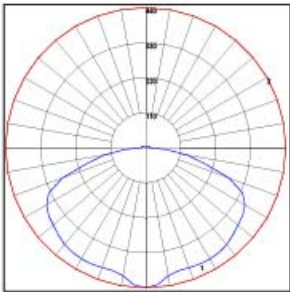
Material description

WINDLOADING: EPA= 1.0 Sq. Ft.

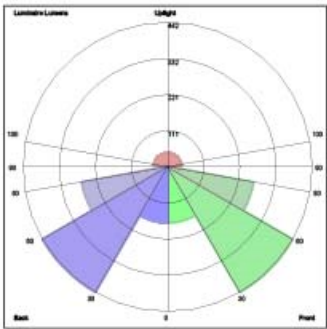


Light Measurements

Photometric Report: NYPT-1-42W-CF
Report No.: 5743904332 Louis Poulsen Lighting A/S
Poulsen Report No.: NYPT-1-42W-CF
Luminaire: NYHAVN POST
Lamp: 1/42W/CF/GX24q-4
Efficiency: 59%
Description: All data shown are per 3200 lumens. This report can be used for calculation on all versions listed below. Use only actual lumen data calculating.



Candlepower Distribution	
Vertical Angle	Candela
0	440.2
5	432.0
15	400.2
25	403.0
35	401.7
45	387.7
55	372.5
65	336.8
75	190.4
90	11.8
120	9.3
150	4.9
180	3.6



Zonal Lumen Summary			
Zone	Lumens	% Lamp	% Fixture
0-20	154.53	4.80	8.20
0-30	340.96	10.70	18.00
0-40	592.83	18.50	31.40
0-60	1225.68	38.30	64.90
0-80	1759.21	55.00	93.10
0-90	1834.2	57.30	97.10
10-90	1793.7	56.10	95.00
20-40	438.30	13.70	23.20
20-50	738.49	23.10	39.10
40-70	957.79	29.90	50.70
60-80	533.53	16.70	28.20
70-80	208.59	6.50	11.00
80-90	74.99	2.30	4.00
90-110	25.07	0.80	1.30
90-120	36.04	1.10	1.90
90-130	43.05	1.30	2.30
90-150	51.05	1.60	2.70
90-180	54.79	1.70	2.90
110-180	29.72	0.90	1.60
0-180	1888.99	59.00	100.00

LUMINAIRE CLASSIFICATION SYSTEM (LCS)			
	Lumens	% Lamp	% Luminaire
FL - Front-Low (0-30)	170.5	5.3	9.0
FM - Front-Medium (30-60)	442.4	13.8	23.4
FH - Front-High (60-80)	288.8	8.3	14.1
FVH - Front-Very High (80-90)	37.5	1.2	2.0
BL - Back-Low (0-30)	170.5	5.3	9.0
BM - Back-Medium (30-60)	442.4	13.8	23.4
BH - Back-High (60-80)	288.8	8.3	14.1
BVH - Back-Very High (80-90)	37.5	1.2	2.0
UL - Uplight-Low (90-100)	12.3	0.4	0.6
UH - Uplight-High (100-180)	42.5	1.3	2.3
Total	1889.2	58.9	100.0
BUG Rating	B1-U2-G1		