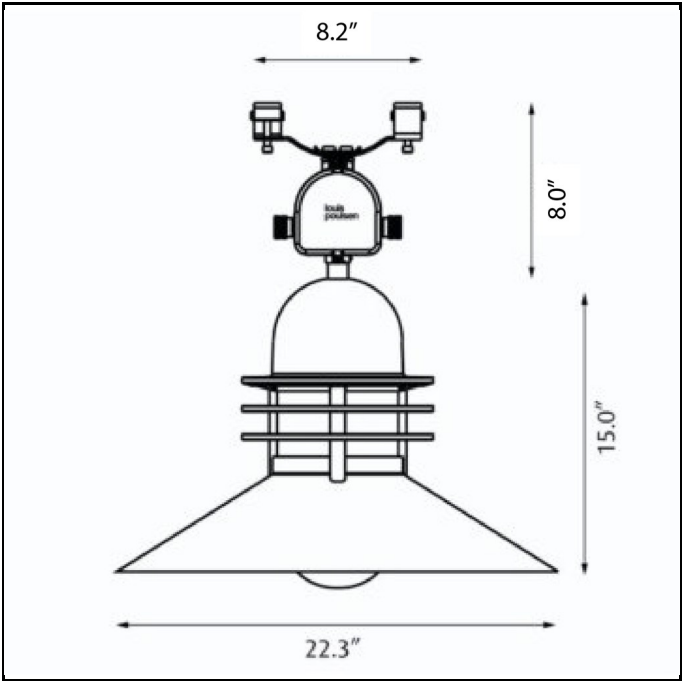


Nyhavn Cable Hanger



Design	Alfred Homann
Concept	The conical shade ensures comfortable light that is directed downwards in a wide beam. The shade interior has a white matte painted surface, ensuring uniform light distribution. The rings ensure that a stray light is controlled, and direct a small amount of light onto the top side of the shade for self-illumination.
Finish	Copper, brushed. Natural painted aluminum or white, powder coated.
Material	Hanging hardware: Stainless steel. Cable compartment: Die cast aluminum. Shades: Spun aluminum or spun copper. Diffuser: Injection molded clear polycarbonate (MH), injection molded partly frosted polycarbonate (CMH), or injection molded white opal polycarbonate (CF) . Rings: Die cast aluminum or copper plated, die cast red brass. Top: Die cast aluminum or copper plated, die cast red brass.
Mounting	Suspension type: Suspended from a through wiring cable hanger provided and by suspension cables by others.
Weight	Max. 41 lbs.
Label	cULus, Wet location. IBEW.

Product Code	Light source	Voltage	Finish
NYP-CH	1/100W/MH/ED-17 medium	120/277V	COP
	1/26W/32W/42W/CF GX24q-3/4	120-277V	NAT PAINT ALU
	1/70W/CMH/T-6 G12		WHT

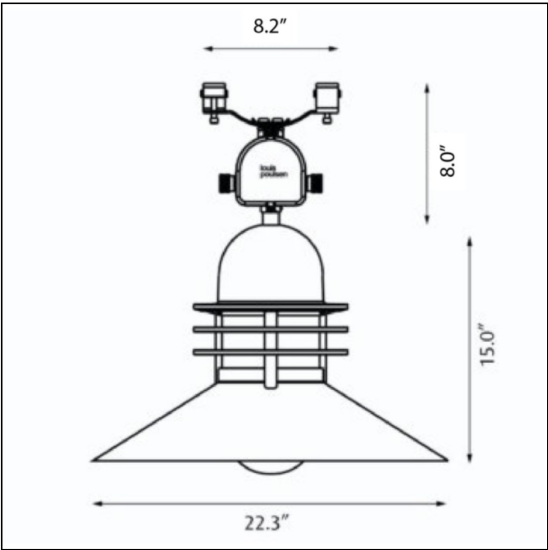
Specification notes
a. CMH and MH variant provided with 120/277V ballast.
b. CF variant provided with 120-277V ballast.

Nyhavn Cable Hanger

NYP-CH-MH

PRODUCT SPECIFICATION

Product description



Design Alfred Homann

Concept The conical shade ensures comfortable light that is directed downwards in a wide beam. The shade interior has a white matte painted surface, ensuring uniform light distribution. The rings ensure that a stray light is controlled, and direct a small amount of light onto the top side of the shade for self-illumination.

Finish Copper, brushed. Natural painted aluminum or white, powder coated.

Material Hanging hardware: Stainless steel. Cable compartment: Die cast aluminum. Shades: Spun aluminum or spun copper. Diffuser: Injection molded clear polycarbonate (MH), injection molded partly frosted polycarbonate (CMH), or injection molded white opal polycarbonate (CF) . Rings: Die cast aluminum or copper plated, die cast red brass. Top: Die cast aluminum or copper plated, die cast red brass.

Mounting Suspension type: Suspended from a through wiring cable hanger provided and by suspension cables by others.

Weight Max. 41 lbs.

Label cULus, Wet location. IBEW.

Product Code	Light source	Voltage	Finish
NYP-CH	1/100W/MH/ED-17 medium	120/277V	COP
	1/26W/32W/42W/CF GX24q-3/4	120-277V	NAT PAINT ALU
	1/70W/CMH/T-6 G12		WHT

Specification notes

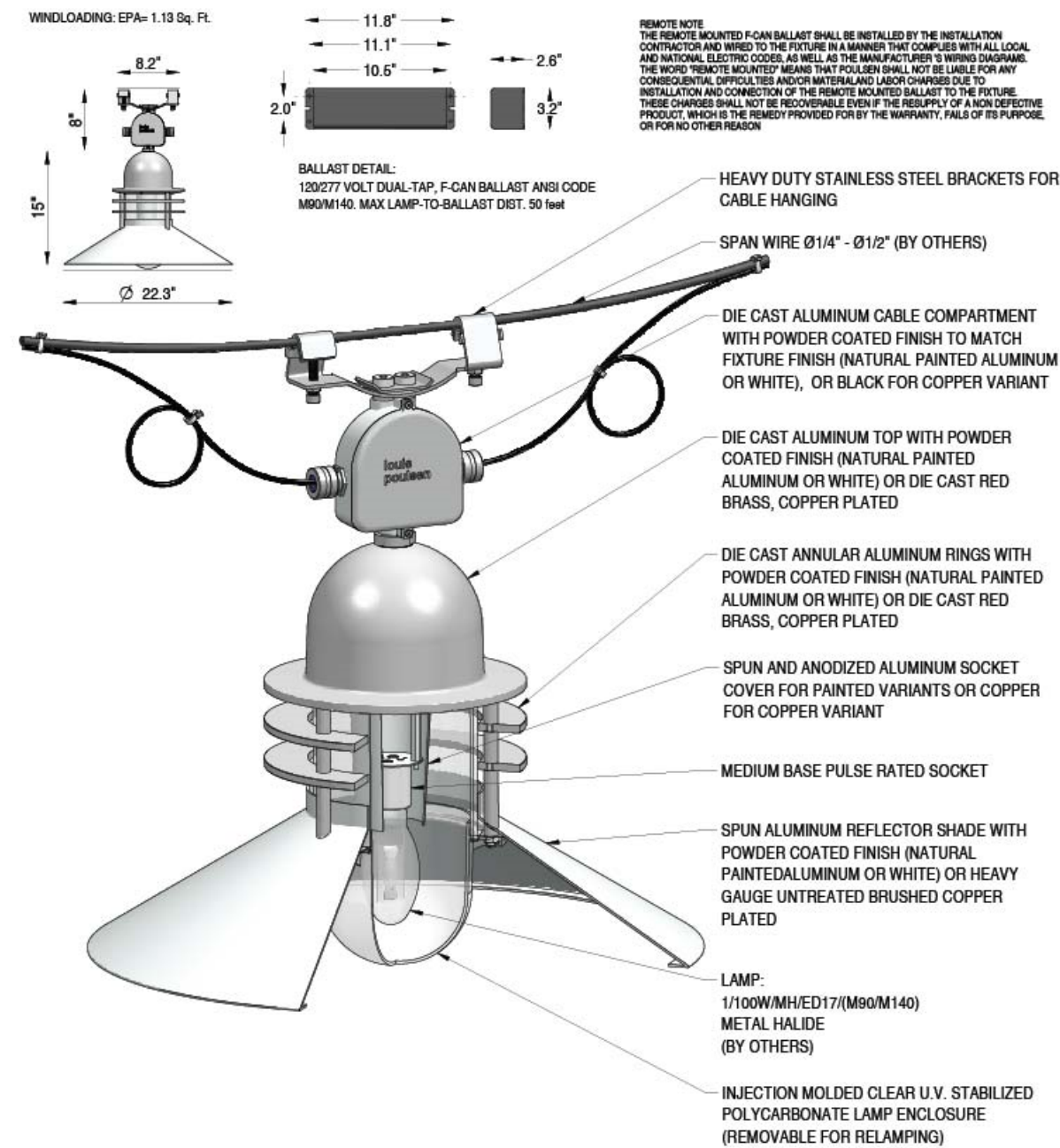
- a. CMH and MH variant provided with 120/277V ballast.
- b. CF variant provided with 120-277V ballast.

Nyhavn Cable Hanger

NYP-CH-MH

PRODUCT SPECIFICATION

Material description



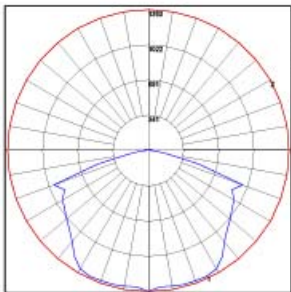
Nyhavn Cable Hanger

NYP-CH-MH

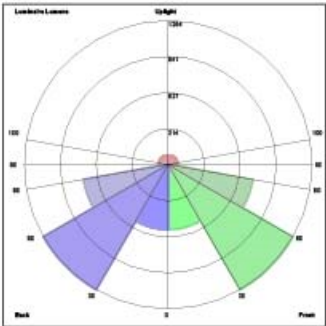
PRODUCT SPECIFICATION

Light Measurements

Photometric Report: NYP-CH-1-100W-MH
Report No.: 6043901856 Louis Poulsen Lighting A/S
Poulsen Report No.: NYP-CH-1-100W-MH
Luminaire: NYHAVN CABLE HANGER
Lamp: 1/100W/MH/ED17
Efficiency: 57%
Description: All data shown are per 9300 lumens. This report can be used for calculation on all versions listed below. Use only actual lumen data calculating.



Candlepower Distribution	
Vertical Angle	Candela
0	1362.9
5	1321.3
15	1339.8
25	1342.4
35	1249.8
45	1081.3
55	989.4
65	897.1
75	504.0
90	20.0
120	21.3
150	4.6
180	3.8



LUMINAIRE CLASSIFICATION SYSTEM (LCS)

	Lumens	% Lamp	% Luminaire
FL - Front-Low (0-30)	562.3	6.0	10.5
FM - Front-Medium (30-60)	1254.1	13.5	23.5
FH - Front-High (60-80)	747.0	8.0	14.0
FVH - Front-Very High (80-90)	48.5	0.5	0.9
BL - Back-Low (0-30)	562.3	6.0	10.5
BM - Back-Medium (30-60)	1254.1	13.5	23.5
BH - Back-High (60-80)	747.0	8.0	14.0
BVH - Back-Very High (80-90)	48.5	0.5	0.9
UL - Uplight-Low (90-100)	29.0	0.3	0.5
UH - Uplight-High (100-180)	80.9	0.9	1.5
Total	5333.7	57.2	100.0

BUG Rating B2-U3-G1

Zonal Lumen Summary

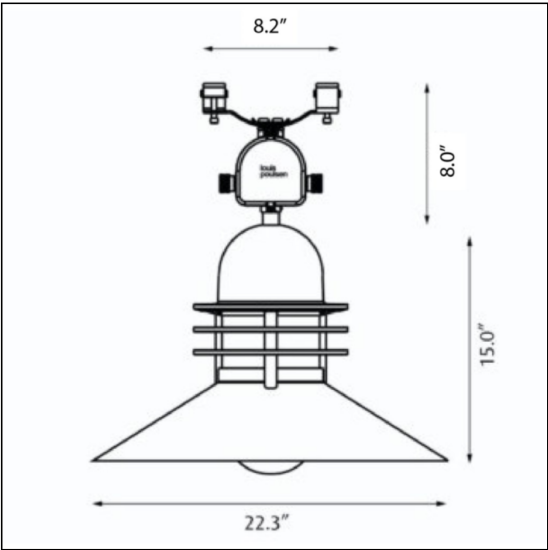
Zone	Lumens	% Lamp	% Fixture
0-20	506.29	5.40	9.50
0-30	1124.55	12.10	21.10
0-40	1902.97	20.50	35.70
0-60	3632.74	39.10	68.10
0-80	5126.66	55.10	96.10
0-90	5223.65	56.20	97.90
10-90	5096.66	54.80	95.60
20-40	1396.66	15.00	26.20
20-50	2236.74	24.10	41.90
40-70	2653.82	28.50	49.80
60-80	1493.92	16.10	28.00
70-80	569.86	6.10	10.70
80-90	96.99	1.00	1.80
90-110	61.57	0.70	1.20
90-120	88.18	0.90	1.70
90-130	99.28	1.10	1.90
90-150	106.28	1.10	2.00
90-180	109.89	1.20	2.10
110-180	48.32	0.50	0.90
0-180	5333.54	57.30	100.00

Nyhavn Cable Hanger

NYP-CH-CMH

PRODUCT SPECIFICATION

Product description



Design Alfred Homann

Concept The conical shade ensures comfortable light that is directed downwards in a wide beam. The shade interior has a white matte painted surface, ensuring uniform light distribution. The rings ensure that a stray light is controlled, and direct a small amount of light onto the top side of the shade for self-illumination.

Finish Copper, brushed. Natural painted aluminum or white, powder coated.

Material Hanging hardware: Stainless steel. Cable compartment: Die cast aluminum. Shades: Spun aluminum or spun copper. Diffuser: Injection molded clear polycarbonate (MH), injection molded partly frosted polycarbonate (CMH), or injection molded white opal polycarbonate (CF) . Rings: Die cast aluminum or copper plated, die cast red brass. Top: Die cast aluminum or copper plated, die cast red brass.

Mounting Suspension type: Suspended from a through wiring cable hanger provided and by suspension cables by others.

Weight Max. 41 lbs.

Label cULus, Wet location. IBEW.

Product Code	Light source	Voltage	Finish
NYP-CH	1/100W/MH/ED-17 medium	120/277V	COP
	1/26W/32W/42W/CF GX24q-3/4	120-277V	NAT PAINT ALU
	1/70W/CMH/T-6 G12		WHT

Specification notes

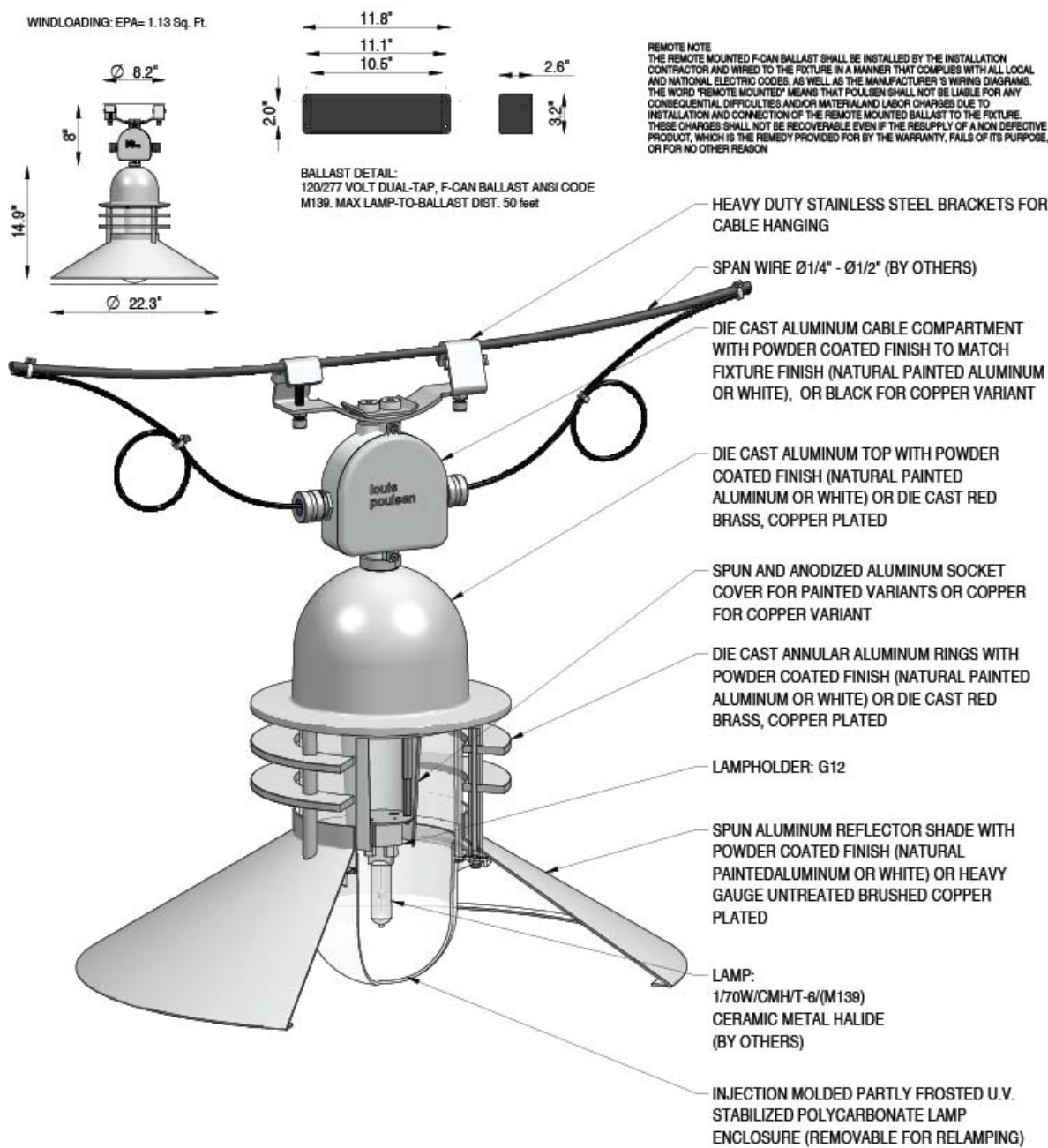
- a. CMH and MH variant provided with 120/277V ballast.
- b. CF variant provided with 120-277V ballast.

Nyhavn Cable Hanger

NYP-CH-CMH

PRODUCT SPECIFICATION

Material description



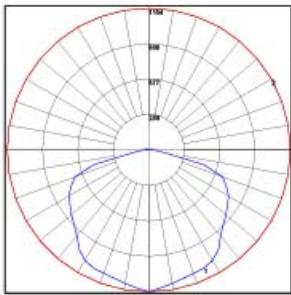
Nyhavn Cable Hanger

NYP-CH-CMH

PRODUCT SPECIFICATION

Light Measurements

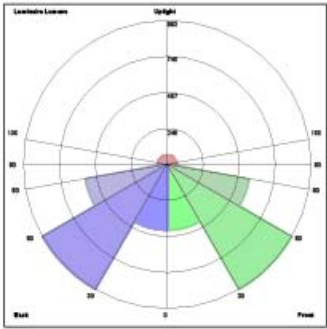
Photometric Report: NYP-CH-1-70W-CMH
Report No.: 6043900005 Louis Poulsen Lighting A/S
Poulsen Report No.: NYP-CH-1-70W-CMH
Luminaire: NYHAVN CABLE HANGER
Lamp: 1/70W/CMH/T6-G12
Efficiency: 64%
Description: All data shown are per 6600 lumens. This report can be used for calculation on all versions listed below. Use only actual lumen data calculating.



Candlepower Distribution	
Vertical Angle	Candela
0	1154.1
5	1127.8
15	1082.0
25	1063.3
35	990.1
45	858.7
55	783.9
65	698.9
75	486.6
90	16.8
120	16.1
150	3.6
180	3.0

Zonal Lumen Summary

Zone	Lumens	% Lamp	% Fixture
0-20	413.99	6.30	9.90
0-30	903.52	13.70	21.50
0-40	1519.31	23.00	36.20
0-60	2890.51	43.80	66.80
0-80	4035.82	61.10	96.10
0-90	4114.63	62.30	98.00
0-90	4007.5	60.70	95.40
10-90	1105.32	16.70	26.30
20-40	1772.34	26.90	42.20
20-50	2063.03	31.30	49.10
40-70	1145.32	17.40	27.30
60-80	453.48	6.90	10.80
70-80	78.80	1.20	1.90
80-90	48.75	0.70	1.20
90-110	68.99	1.00	1.60
90-120	77.62	1.20	1.80
90-130	63.20	1.30	2.00
90-150	66.07	1.30	2.00
90-180	37.32	0.60	0.90
0-180	4200.69	63.60	100.00



LUMINAIRE CLASSIFICATION SYSTEM (LCS)

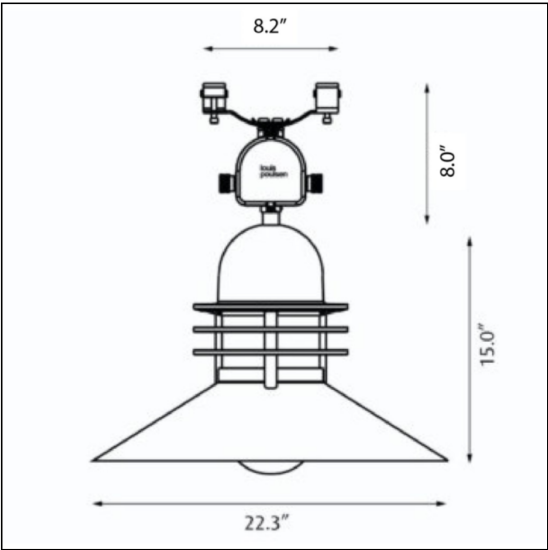
	Lumens	% Lamp	% Luminaire
FL - Front-Low (0-30)	451.8	6.8	10.8
FM - Front-Medium (30-60)	993.5	15.1	23.6
FH - Front-High (60-80)	572.7	8.7	13.6
FVH - Front-Very High (80-90)	39.4	0.6	0.9
BL - Back-Low (0-30)	451.8	6.8	10.8
BM - Back-Medium (30-60)	993.5	15.1	23.6
BH - Back-High (60-80)	572.7	8.7	13.6
BVH - Back-Very High (80-90)	39.4	0.6	0.9
UL - Uplight-Low (90-100)	23.0	0.3	0.5
UH - Uplight-High (100-180)	63.1	1.0	1.5
Total	4200.9	63.7	100.0
BUG Rating	B2-U3-G1		

Nyhavn Cable Hanger

NYP-CH-CF

PRODUCT SPECIFICATION

Product description



Design Alfred Homann

Concept The conical shade ensures comfortable light that is directed downwards in a wide beam. The shade interior has a white matte painted surface, ensuring uniform light distribution. The rings ensure that a stray light is controlled, and direct a small amount of light onto the top side of the shade for self-illumination.

Finish Copper, brushed. Natural painted aluminum or white, powder coated.

Material Hanging hardware: Stainless steel. Cable compartment: Die cast aluminum. Shades: Spun aluminum or spun copper. Diffuser: Injection molded clear polycarbonate (MH), injection molded partly frosted polycarbonate (CMH), or injection molded white opal polycarbonate (CF) . Rings: Die cast aluminum or copper plated, die cast red brass. Top: Die cast aluminum or copper plated, die cast red brass.

Mounting Suspension type: Suspended from a through wiring cable hanger provided and by suspension cables by others.

Weight Max. 41 lbs.

Label cULus, Wet location. IBEW.

Product Code	Light source	Voltage	Finish
NYP-CH	1/100W/MH/ED-17 medium	120/277V	COP
	1/26W/32W/42W/CF GX24q-3/4	120-277V	NAT PAINT ALU
	1/70W/CMH/T-6 G12		WHT

Specification notes

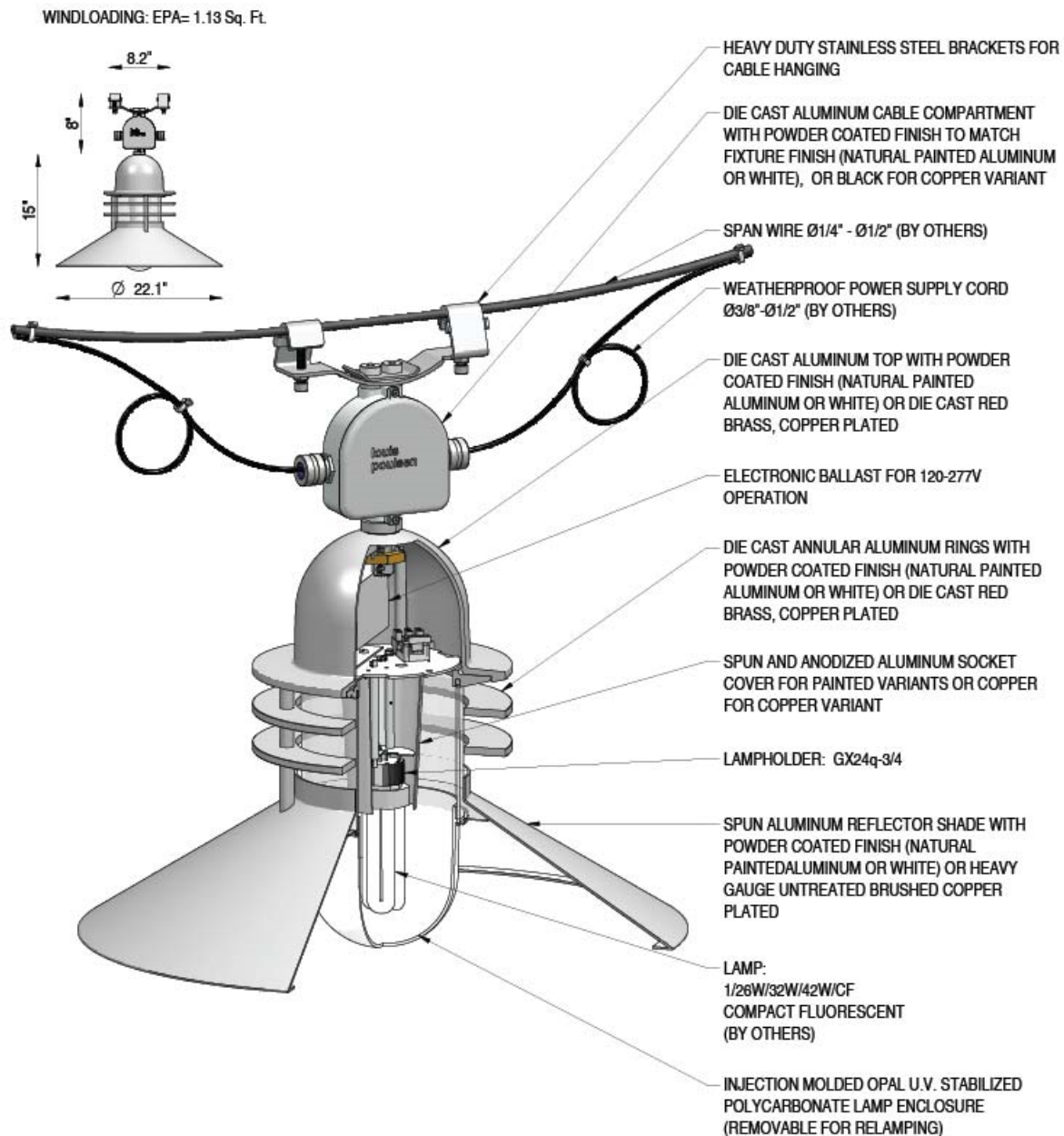
- a. CMH and MH variant provided with 120/277V ballast.
- b. CF variant provided with 120-277V ballast.

Nyhavn Cable Hanger

NYP-CH-CF

PRODUCT SPECIFICATION

Material description



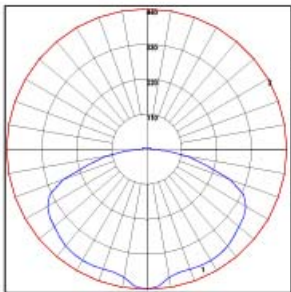
Nyhavn Cable Hanger

NYP-CH-CF

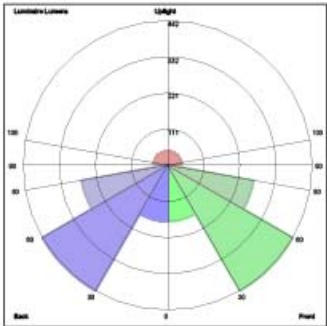
PRODUCT SPECIFICATION

Light Measurements

Photometric Report: NYP-CH-1-42W-CF
Report No.: 5743904332 Louis Poulsen Lighting A/S
Poulsen Report No.: NYP-CH-1-42W-CF
Luminaire: NYHAVN CABLE HANGER
Lamp: 1/42W/CF/GX24q-4
Efficiency: 59%
Description: All data shown are per 3200 lumens. This report can be used for calculation on all versions listed below. Use only actual lumen data calculating.



Candlepower Distribution	
Vertical Angle	Candela
0	440.2
5	432.0
15	400.2
25	403.0
35	401.7
45	387.7
55	372.5
65	336.6
75	190.4
90	11.8
120	9.3
150	4.9
180	3.6



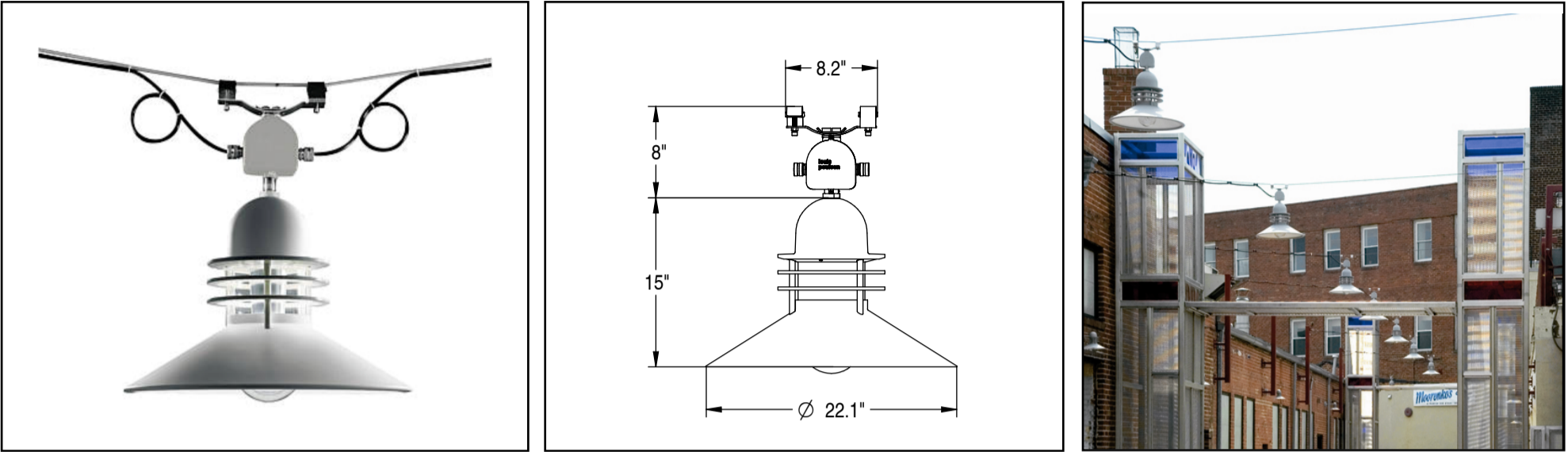
LUMINAIRE CLASSIFICATION SYSTEM (LCS)

	Lumens	% Lamp	% Luminaire
FL - Front-Low (0-30)	170.5	5.3	9.0
FM - Front-Medium (30-60)	442.4	13.8	23.4
FH - Front-High (60-90)	266.8	8.3	14.1
FVH - Front-Very High (90-100)	37.5	1.2	2.0
BL - Back-Low (0-30)	170.5	5.3	9.0
BM - Back-Medium (30-60)	442.4	13.8	23.4
BH - Back-High (60-90)	266.8	8.3	14.1
BVH - Back-Very High (90-100)	37.5	1.2	2.0
UL - Uplight-Low (100-180)	12.3	0.4	0.6
UH - Uplight-High (100-180)	42.5	1.3	2.3
Total	1889.2	58.9	100.0

BUG Rating B1-U2-G1

Zonal Lumen Summary			
Zone	Lumens	% Lamp	% Fixture
0-20	154.53	4.80	8.20
0-30	340.96	10.70	18.00
0-40	592.83	18.50	31.40
0-60	1225.68	38.30	64.90
0-80	1759.21	55.00	93.10
0-90	1834.2	57.30	97.10
10-90	1793.7	56.10	95.00
20-40	438.30	13.70	23.20
20-50	738.49	23.10	39.10
40-70	957.79	29.90	50.70
60-80	533.53	16.70	28.20
70-80	208.59	6.50	11.00
80-90	74.99	2.30	4.00
90-110	25.07	0.80	1.30
90-120	36.04	1.10	1.90
90-130	43.05	1.30	2.30
90-150	51.05	1.60	2.70
90-180	54.79	1.70	2.90
110-180	29.72	0.90	1.60
0-180	1888.99	59.00	100.00

Design Alfred Homann



Light source	Voltage	Weight	Electric shock protection	Ingress protection
1/100W/MH/ED-17 medium 1/70W/CMH/T-6 G12 1/26W/32W/42W/CF Gx24q-3/4	120/277 V 120-277 V	41 lbs	Cl.	IP 20, Wet lacion

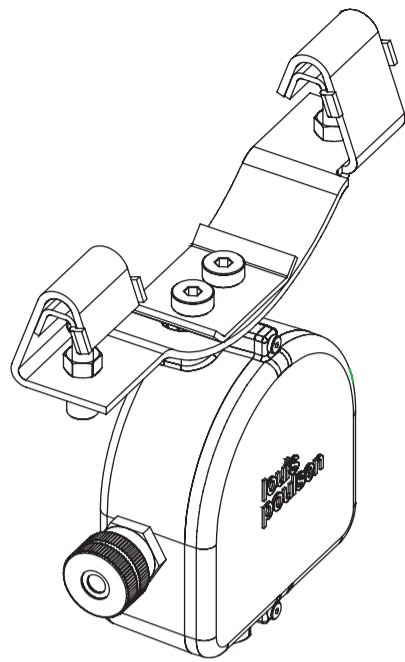
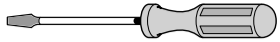
Recommended cleaning substances:
Wipe off dust wiht a dry, soft cloth. Remove greasy spots etc. with a soft cloth dampe-
ned in lukewarm water (<122° F/ 50° C) with a mild detergent.

Warning: Scouring powder and similar substances will scratch surfaces.

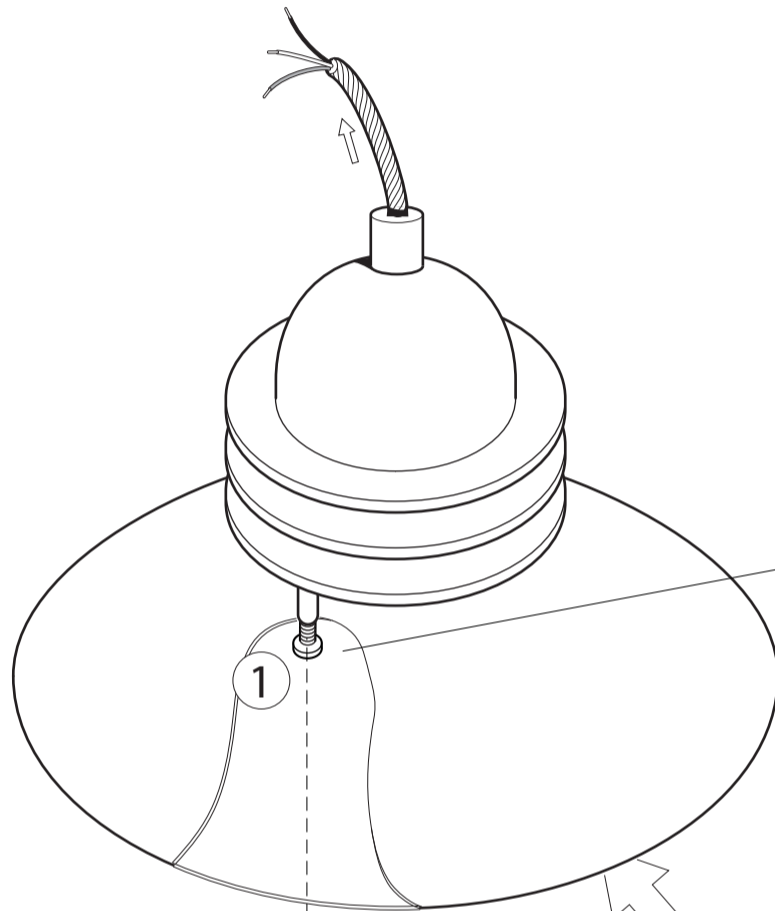
All installation is subject to local code and jurisdiction.

Consult a qualified electrician to ensure correct branch circuit conductor.

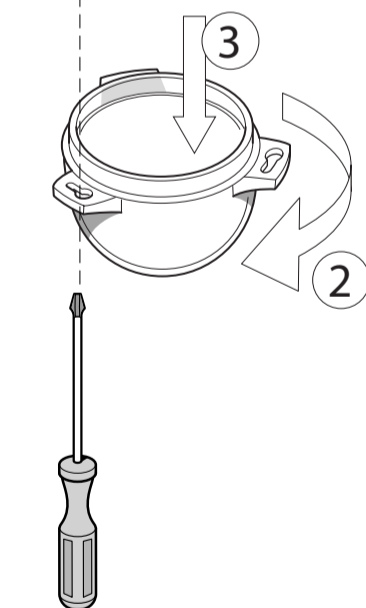
The installer must ensure that the foundation is stable and can support the luminiare’s weight.



See further mounting
instructions in the
manual supplied with
the cable hanger



Do NOT remove screw !



Relamping:

Remove the
polycarbonate enclosure by
loosening the screw.
Replace the light source.
Remount the enclosure and
tighten the screw.

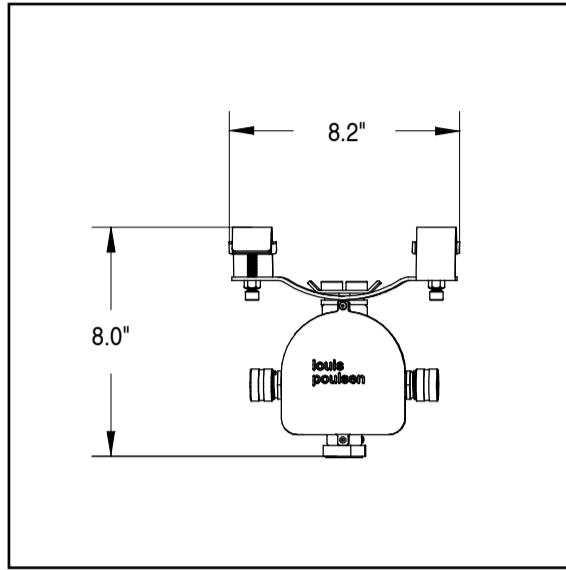


Use only light source
in accordance to the
lamp replacement
label on the luminaire

Cable hanger

**louis
poulsen**

Design Alfred Homann



1440116000

Recommended cleaning substances:

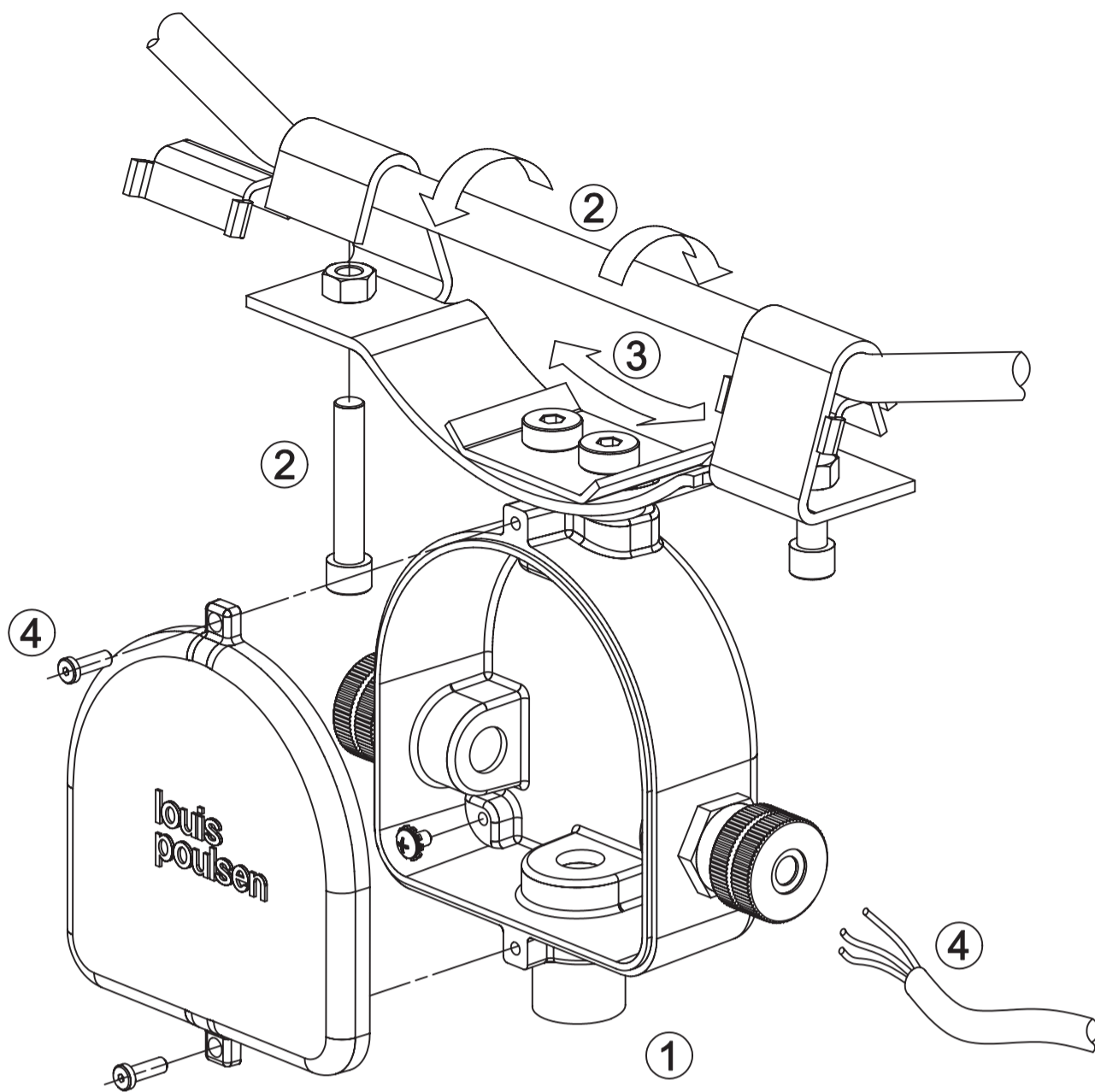
Wipe off dust with a dry, soft cloth. Remove greasy spots etc. with a soft cloth dampened in lukewarm water (<122° F/ 50° C) with a mild detergent.

Warning: Scouring powder and similar substances will scratch surfaces.

All installation is subject to local code and jurisdiction.

Consult a qualified electrician to ensure correct branch circuit conductor.

The installer must ensure that the foundation is stable and can support the luminaire's weight.



Step 1:
Attach Wiring Compartment to top of luminaire and bring wires into Wire Compartment through lower nipple.

Step 2:
Loosen span wire clamping bolts and engage mounting bracket over span wire (By others). Let luminaire hang free and then tighten clamping bolts. Use hex nuts to lock clamping bolts in tight position.

Step 3:
Loosen hanging bolts one turn and let luminaire hang free. Tighten hanging bolts again.

Step 4:
Open Wiring Compartment . Bring sow cable (By others) through water tight fitting. Wire luminaire according to enclosed wiring diagram. Close Wiring Compartment making sure gasket is properly seated.

NOTE: Water tight fitting uses different inserts for four different size ranges of cable O.D. (See wiring diagram)

WARNING: Hanging Bracket is designed to accept span wires from 1/4" O.D. to 1/2" O.D.. It is the installer's responsibility to make sure that the span wire selected is appropriate for the static and dynamic loads imposed by the luminaire and its attachments. Wiring Compartment is designed for attachment to a single luminaire head up to 60 Lb..

WIRING DIAGRAM

