

m o o o i[®]



Nut Lounge Chair

Sitting in the warm embrace of the Nut Lounge Chair by Marcel Wanders you will feel protected and as precious as the most beautiful pearl in the sea.

Designer

Marcel Wanders

Year of design

2013

Material

Oak veneer bent plywood; solid oak legs

upholstery categories

Oil	Jacquard Fresco
Machedil Sottile	Jacquard Old Black & Old Blue
Machedil Grezzo	Twill
Oray	Arredo Leather
Manga	Cervino Leather
Faux	Velour
Jacquard Canvas	COF

Oil

composition:

64% VI / 27% CO / 9% PA.



Arredo Leather

composition

100% semi aniline leather

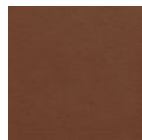
Leather is a natural product, colours may vary from hide to hide.

firetest

EN1021 I&2



Arredo Leather
Black



Arredo Leather
Brown



Arredo Leather
White

Cervino Leather

composition

100% aniline leather

Leather is a natural product, colours may vary from hide to hide.

firetest

EN1021 I&2



Cervino Leather
Anthracite



Cervino Leather
Cognac



Cervino Leather
Mud



Cervino Leather
Pure

Abbracci

composition

100% pl

abrasion

50.000 martindale

lightfastness 4

firetest

FR BS5852 0/1

EN1021 I&2



Abbracci
Black



Abbracci
Brown

Jacquard andaz

composition:

34% cotton - 30% viscose - 24% linen - 12% polyamide

abrasion:

25000 martindale

firetest:

BS EN 1021 I&2



Jacquard
Andaz

Jaquard Fresco

composition

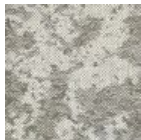
40% vi ,36% co,14% pl, 10% li

abrasion

20.000> martindale

firetest

EN1021 I&2



Jaquard
Fresco

Jacquard Old Black & Blue

composition

52% vi, 38% co, 10% li

abrasion

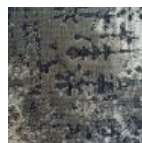
20.000> martindale

firetest

EN1021 I&2



Jaquard
Old Blue



Jaquard
Old Black

Oray

composition

8% co, 38% vi, 15% pl, 39% li

abrasion

30.000 martindale

lightfastness 4



Oray
Cream



Oray
Sand



Oray
Rock



Oray
Mineral



Oray
Gravel



Oray
Dark Gull



Oray
Copper



Oray
Rust



Oray
Flamboyant



Oray
Oil



Oray
Aqua

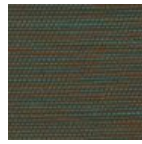
Schedule



Oray
Pea



Oray
Ocean



Oray
Metal



Oray
Griffin



Oray
Dusk



Oray
Chestnut



Oray
Dark



Oray
Indigo



Oray
Ochre

Macchedil, Grezzo

composition

47% co, 20% vi, 18% pi, 8% li, 5% pc, 2% af

abrasion

18.000 martindale

lightfastness 4

firetest

EN1021 I&2

m o o o i[®]



Macchedil Grezzo
Black indigo



Macchedil Grezzo
Pinkish



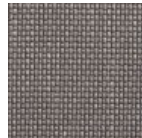
Macchedil Grezzo
Offwhite



Macchedil Grezzo
Light grey



Macchedil Grezzo
Light brown



Macchedil Grezzo
Grey grey



Macchedil Grezzo
Anthracite



Macchedil Grezzo
Blue grey



Macchedil Grezzo
Cappuchino



Macchedil Grezzo
Deepblue

Macchedil, Sottile

composition

49% vi, 24% pl, 21% li, 6% co

abrasion

30.000 martindale

lightfastness 4

firetest

EN1021 I&2



Manga

composition

29% pl, 71% co

abrasion

40.000 martindale

lightfastness 5

firetest

FR BS5852 0/1

EN1021 I&2



Oray

composition

8% co, 38% vi, 15% pl, 39% li

abrasion

30.000 martindale

lightfastness 4



Oray
Cream



Oray
Sand



Oray
Rock



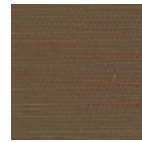
Oray
Mineral



Oray
Gravel



Oray
Dark Gull



Oray
Copper



Oray
Rust



Oray
Flamboyant



Oray
Oil



Oray
Aqua

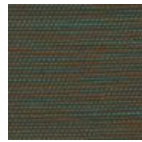
Schedule



Oray
Pea



Oray
Ocean



Oray
Metal



Oray
Griffin



Oray
Dusk



Oray
Chestnut



Oray
Dark



Oray
Indigo



Oray
Ochre

Twill

composition

72% wo, 8% pa, 20% pl

abrasion

75.000 martindale

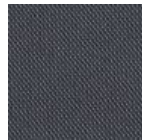
lightfastness 5

firetest

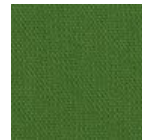
EN1021 I&2



Twill
Caviar



Twill
Graphite



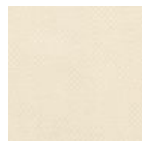
Twill
Grass



Twill
Light grey



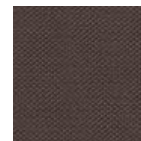
Twill
Linen



Twill
Natural



Twill
Passion



Twill
Walnut

Velour

composition

77% wo, 8% pa, 15% pl

abrasion

100.000 martindale

lightfastness 7

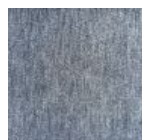
firetest

FR BS5852 0/1

EN1021 I&2



Velour
Coral



Velour
Stone



Velour
Moss

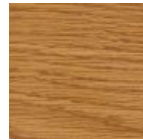
Stain colours



White Wash



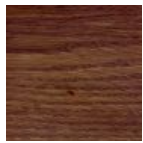
Wenge



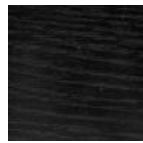
Natural Oil



Grey



Cinnamon



Black Stained

cleaning instructions

Moooi recommends using a good furniture polish and a soft cloth. Apply generously in layers to the surface and use the cloth to shine. Do not use abrasive fabrics, gently remove tough stains with warm water and a trusted multi-surface cleaner.

packaging

Nut lounge chair

H 74 cm | 29,1"

W 70 cm | 27,6"

D 73 cm | 28,7"

Colli 1/1

With packaging:

15 KG | 33,1 lb

m o o o i[®]

dimensions

70cm | 27,6"



48cm | 18,9"

69cm | 27,2"



68cm | 26,8"



41cm | 16,1"

44cm | 17,3"



40cm | 15,7"

68cm | 26,8"



44cm | 17,3"