

m o o o i<sup>®</sup>



## Love Sofa

---

Have you ever fallen in love with a chair or on a sofa? Both experiences are possible, even probable while enjoying a romantic dinner for two in the Love chair or cuddling up with your sweetheart in one of the Love sofas by Marcel Wanders.

---

<b>Designer</b>	Marcel Wanders
<b>Year of design</b>	2013
<b>Material</b>	Moulded foam with metal frame for durable comfort.

---

---

## upholstery categories

COF (Client Own Fabric)

Abbracci

Bouclé/Divina Composition (Kvadrat

divina 3: 191-black, 0224-brown,

791-blue, 542-orange)

Bouclé

Jacquards

Liscio

Divina 3 & Divina Melange

Summit Uni & Summit Melange

Trickle

Twill & Twill Melange

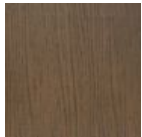
Velour

Plush

COF (Client Own Fabric)

---

## colours



Wood Stained  
Cinnamon



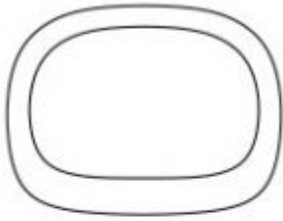
Wood Stained  
White Washed

---

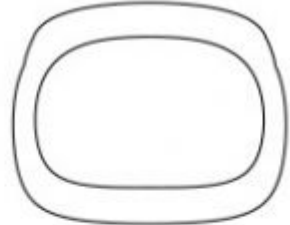
## dimensions

# m o o o i<sup>®</sup>

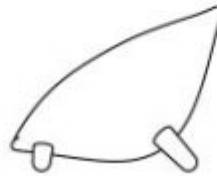
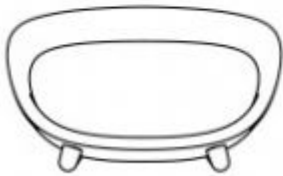
129cm | 50,8"



129cm | 50,8"



77cm | 30,3"



77cm | 30,3"

102cm | 40,2"



## Abbracci

### composition

100% pl

### abrasion

50.000 martindale

### lightfastness 4

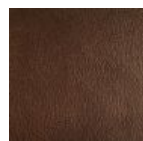
### firetest

FR BS5852 0/1

EN1021 I&2



Abbracci  
**Black**



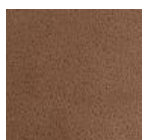
Abbracci  
**Brown**



Abbracci  
**Grey**



Abbracci  
**Oyster**



Abbracci  
**Taupe**

---

## Jacquard andaz

**composition:**

34% cotton - 30% viscose - 24% linen - 12% polyamide

**abrasion:**

25000 martindale

**firetest:**

BS EN 1021 1&2



Jacquard  
**Andaz**

---

## Jaquard Fresco

**composition**

40% vi ,36% co,14% pl, 10% li

**abrasion**

20.000> martindale

**firetest**

EN1021 1&2



Jaquard  
**Fresco**

---

## Jacquard Old Black & Blue

**composition**

52% vi, 38% co, 10% li

**abrasion**

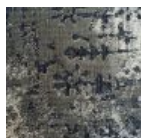
20.000> martindale

**firetest**

EN1021 1&2



Jacquard  
**Old Blue**



Jacquard  
**Old Black**

---

## Liscio



Liscio  
**Grigio Blu  
Scuro**



Liscio  
**Grigio Blu**



Liscio  
**Grigio Scuro**



Liscio  
**Muscio Scuro**



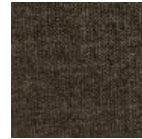
Liscio  
**Muscio**



Liscio  
**Argento**



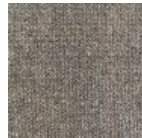
**Liscio**  
Nebbia



Liscio  
**Pietra**



Liscio  
**Perla**



Liscio  
**Latte Scuro**



Liscio  
**Latte**

---

## Divina 3

### Composition

100% new wool

### Martindale

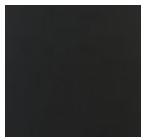
45.000

### Pilling

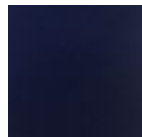
3

### Lightfastness

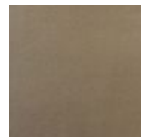
7



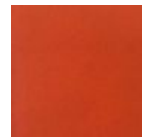
Divina 3  
**Black**



Divina 3  
**Blue**



Divina 3  
**Brown**



Divina 3  
**Orange**

---

## Divina Melange 2

# m o o o i<sup>®</sup>

## Composition

100% New wool

## Durability

45.000 Martindale

## Pilling

3

## Lightfastness

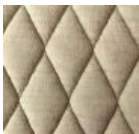
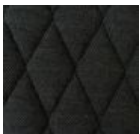
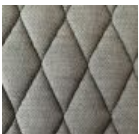
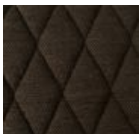
6-7

## Sustainability

Natural fibres / Sustainable resource

	Divina Melange 120		Divina Melange 170		Divina Melange 180		Divina Melange 220
	Divina Melange 260		Divina Melange 280		Divina Melange 421		Divina Melange 471
	Divina Melange 521		Divina Melange 531		Divina Melange 571		Divina Melange 581
	Divina Melange 620		Divina Melange 631		Divina Melange 671		Divina Melange 681
	Divina Melange 721		Divina Melange 731		Divina Melange 771		Divina Melange 821
	Divina Melange 871		Divina Melange 920		Divina Melange 931		Divina Melange 971

## Summit Melange

	Summit Melange <b>Flour</b>		Summit Melange <b>Slate</b>		Summit Melange <b>Dust</b>		Summit Melange <b>Peat</b>
--	--------------------------------	---	--------------------------------	---	-------------------------------	---	-------------------------------

# m o o o i<sup>®</sup>



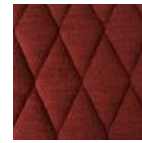
Summit Melange  
**Twig**



Summit Melange  
**Lagoon**



Summit Melange  
**Lavender**



Summit Melange  
**Chili**

---

## Summit UNI

### composition

22% wo, 2% pa, 14% pl, 62% pl filling

### abrasion

50.000 martindale

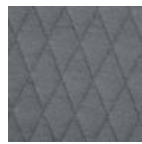
### lightfastness 5

### firetest

EN1021 I&2



Summit UNI  
**Caviar**



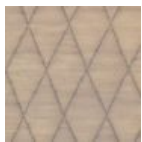
Summit UNI  
**Graphite**



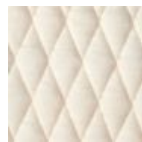
Summit UNI  
**Grass**



Summit UNI  
**Grey**



Summit UNI  
**Linen**



Summit UNI  
**Natural**



Summit UNI  
**Passion**



Summit UNI  
**Walnut**

---

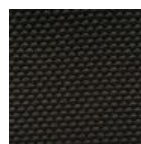
## Trickle



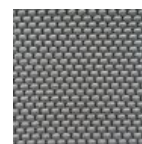
Trickle  
**Flour**



Trickle  
**Twig**



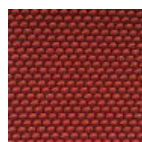
Trickle  
**Peat**



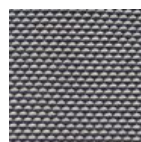
Trickle  
**Dust**



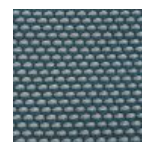
**Trickle**  
Slate



Trickle  
**Chili**



Trickle  
**Lavender**



Trickle  
**Lagoon**

---

## Twill

# m o o o i<sup>®</sup>

## composition

72% wo, 8% pa, 20% pl

## abrasion

75.000 martindale

## lightfastness 5

## firetest

EN1021 I&2



Twill  
**Caviar**



Twill  
**Graphite**



Twill  
**Grass**



Twill  
**Grey**



Twill  
**Linen**



Twill  
**Natural**



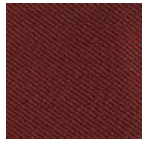
Twill  
**Passion**



Twill  
**Walnut**

---

## Twill Melange



Twill Melange  
**Chili**



Twill Melange  
**Dust**



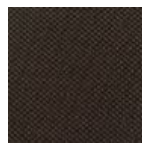
Twill Melange  
**Flour**



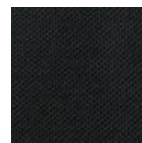
Twill Melange  
**Lagoon**



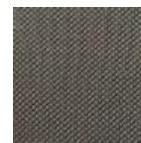
Twill Melange  
**Lavender**



Twill Melange  
**Peat**



Twill Melange  
**Slate**



Twill Melange  
**Twig**

---

## Velour

### composition

77% wo, 8% pa, 15% pl

### abrasion

100.000 martindale

### lightfastness 7

### firetest

FR BS5852 0/1

EN1021 I&2



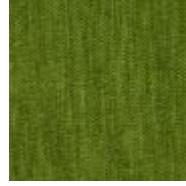
# m o o o i<sup>®</sup>



Velour  
**Coral**



Velour  
**Stone**



Velour  
**Moss**

---

## Plush



white