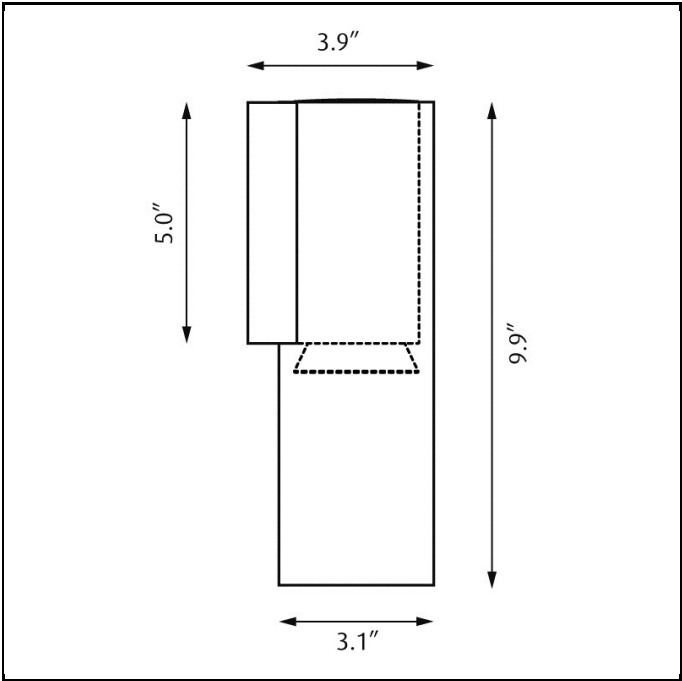


F+P Wall LED



- Design

Foster & Partners
- Concept

The fixture emits a symmetrical downlight. The opal cone ensures an even and diffuse light, free from obtrusive glare. The light emitted through the cone helps reducing the contrasts. The polished edges of the cylinder glow and hence clarify the shape of the fixture.
- Finish

White, natural painted aluminum or graphite grey, powder coated.
- Material

Housing: Die cast aluminum. Enclosure: Extruded clear acrylic with polished edges.
- Mounting

Surface: Mounted directly to finished surface over a recessed 4" octagonal junction box.
- Weight

Max. 2.2 lbs.
- Label

cULus, Wet location. IBEW.

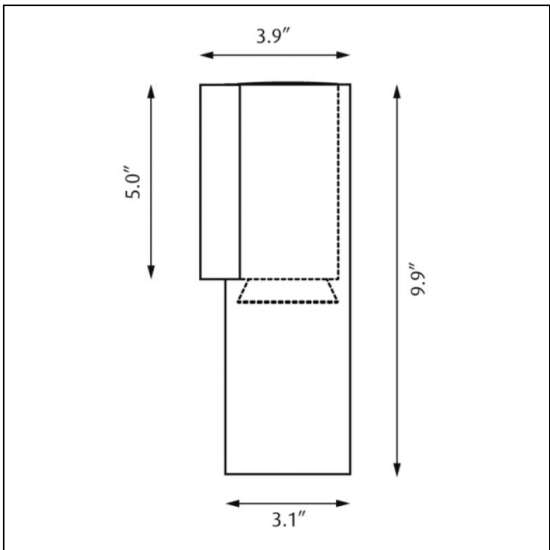
Product Code	Light source	Finish
F+P-W	7W LED/3000K	GRAPH
	7W LED/4000K	NAT PAINT ALU
		WHT

F+P Wall LED

F-P WALL LED

PRODUCT SPECIFICATION

Product description



- Design** Foster & Partners
- Concept** The fixture emits a symmetrical downlight. The opal cone ensures an even and diffuse light, free from obtrusive glare. The light emitted through the cone helps reducing the contrasts. The polished edges of the cylinder glow and hence clarify the shape of the fixture.
- Finish** White, natural painted aluminum or graphite grey, powder coated.
- Material** Housing: Die cast aluminum. Enclosure: Extruded clear acrylic with polished edges.
- Mounting** Surface: Mounted directly to finished surface over a recessed 4" octagonal junction box.
- Weight** Max. 2.2 lbs.
- Label** cULus, Wet location. IBEW.

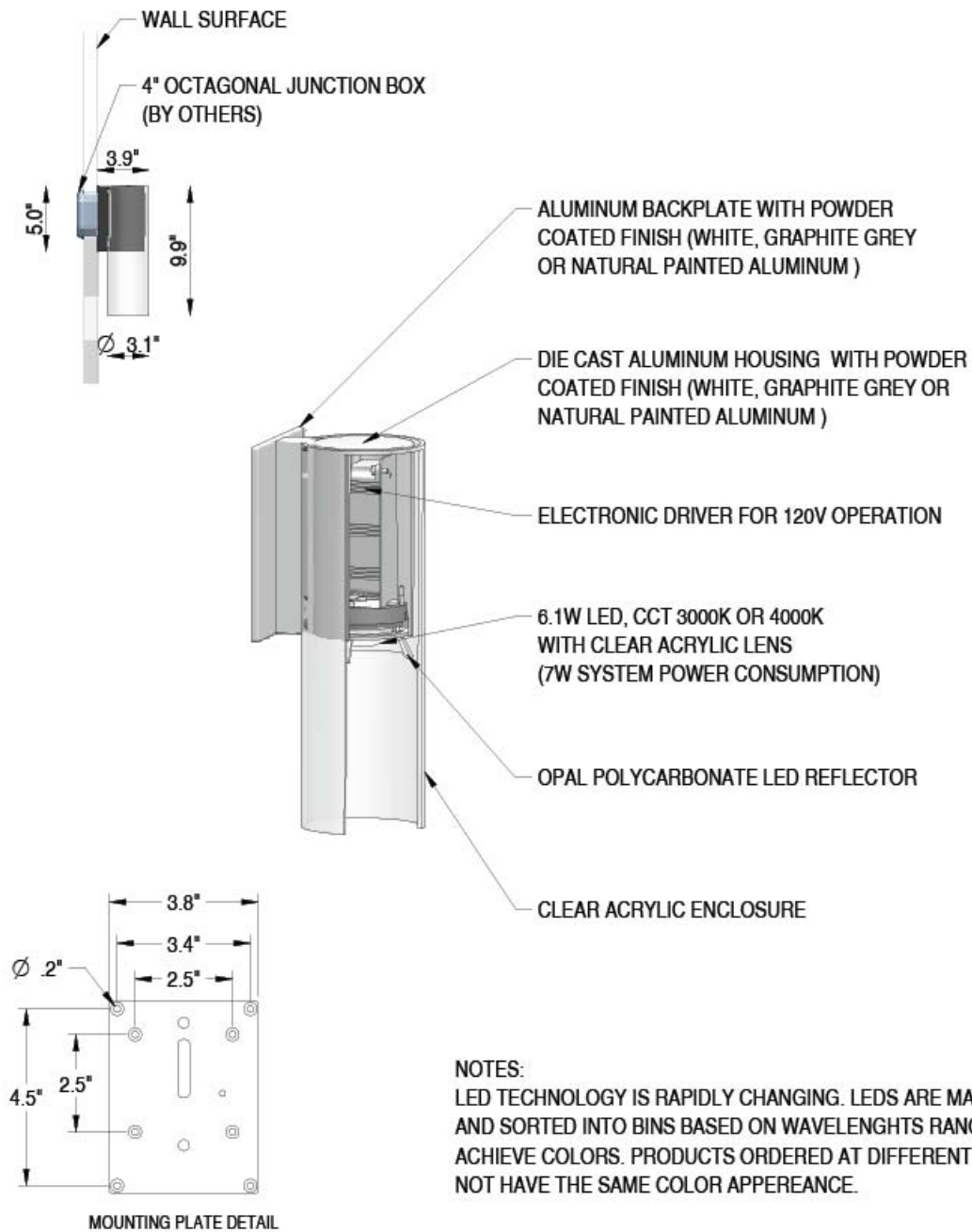
Product Code	Light source	Finish
F+P-W	7W LED/3000K	GRAPH
	7W LED/4000K	NAT PAINT ALU
		WHT

F+P Wall LED

F-P WALL LED

PRODUCT SPECIFICATION

Material description



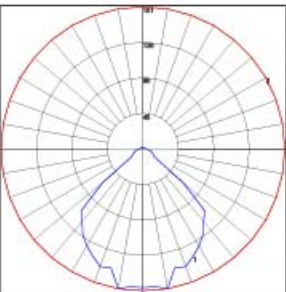
F+P Wall LED

F-P WALL LED

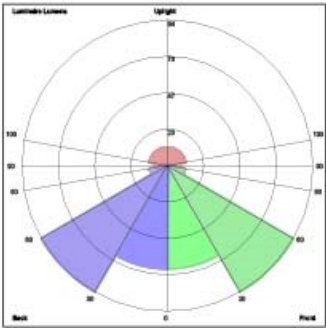
PRODUCT SPECIFICATION

Light Measurements

Photometric Report: F&P WALL 7W LED
Report No: L7709A
Poulsen Report No: F&P WALL 7W LED
Luminaire: F & P WALL LED
Lamp: 7W/LED/4000K
Description: All data shown are per 365 lumens. This report can be used for calculation on all versions listed below. Use only actual lumen data calculating.



Candlepower Distribution	
Vertical Angle	Candela
0	177.2
5	176.4
15	157.2
25	151.2
35	133.6
45	111.5
55	117.1
65	13.7
75	9.2
85	3.5
90	2.8
120	1.5
150	0.4
180	0.4



LUMINAIRE CLASSIFICATION SYSTEM (LCS)

	Lumens	% Lamp	% Luminaire
FL - Front-Low (0-30)	66.5	18.2	18.2
FM - Front-Medium (30-60)	93.9	25.7	25.7
FH - Front-High (60-90)	11.6	3.2	3.2
FVH - Front-Very High (90-180)	2.7	0.7	0.7
BL - Back-Low (0-30)	66.5	18.2	18.2
BM - Back-Medium (30-60)	93.9	25.7	25.7
BH - Back-High (60-90)	11.6	3.2	3.2
BVH - Back-Very High (90-180)	2.7	0.7	0.7
UL - Uplight-Low (0-100)	3.7	1.0	1.0
UH - Uplight-High (100-180)	11.7	3.2	3.2
Total	364.8	99.8	100.0

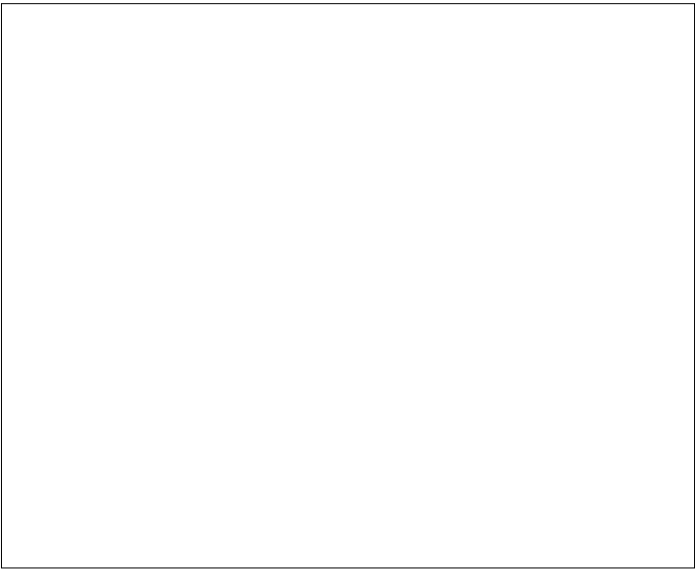
BUG Rating 80-U2-G0

Zonal Lumen Summary			
Zone	Lumens	% Lamp	% Fixture
0-20	63.19	17.30	17.30
0-30	133.04	36.40	36.50
0-40	216.20	59.20	59.30
0-50	320.84	87.90	87.90
0-60	344.01	94.20	94.30
0-70	349.42	95.70	95.80
0-80	332.41	91.10	91.10
0-90	153.01	41.90	41.90
0-100	231.97	63.60	63.60
0-110	118.07	32.30	32.40
0-120	23.18	6.40	6.40
0-130	9.74	2.70	2.70
0-140	5.41	1.50	1.50
0-150	6.93	1.90	1.90
0-160	9.68	2.70	2.70
0-170	11.89	3.30	3.30
0-180	14.52	4.00	4.00
0-190	15.42	4.20	4.20
0-200	8.49	2.30	2.30
0-210	364.84	100.00	100.00

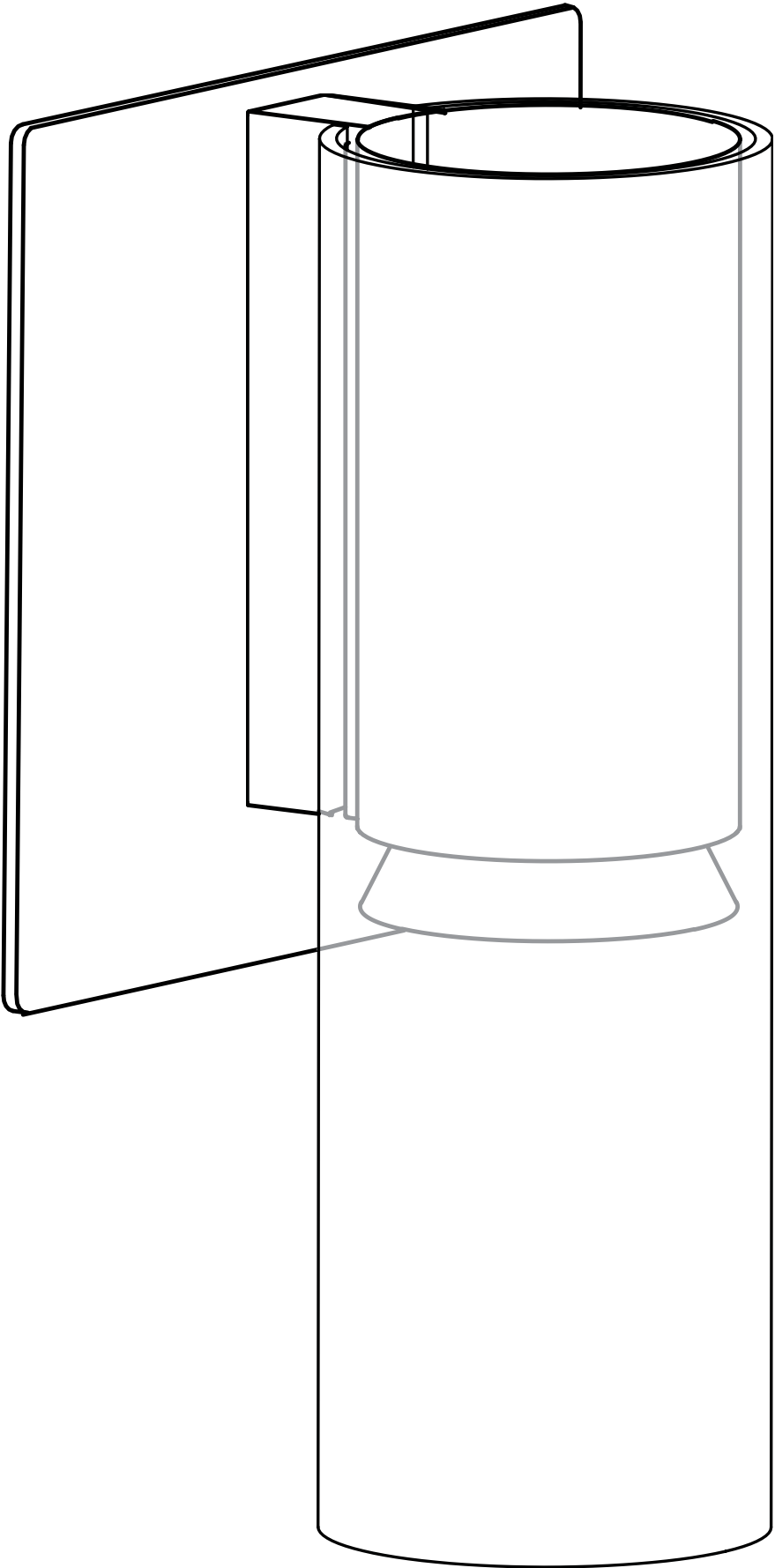
F+P wall Replacementkit - LED

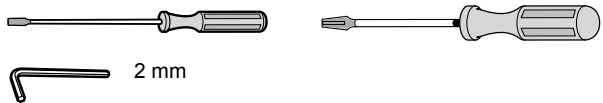
louis
poulsen

Design Fosters & Partners

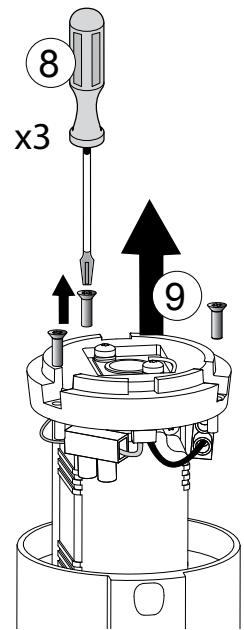
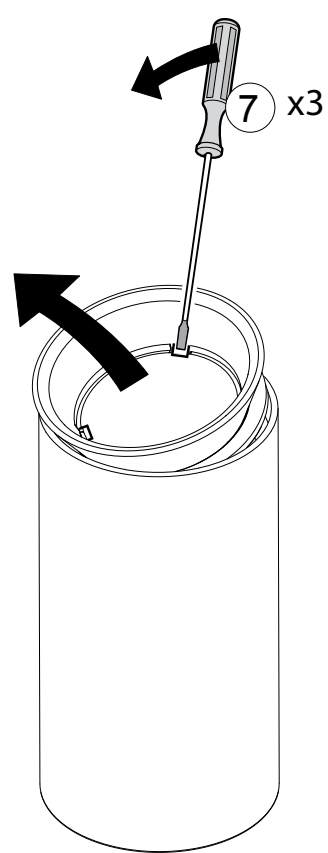
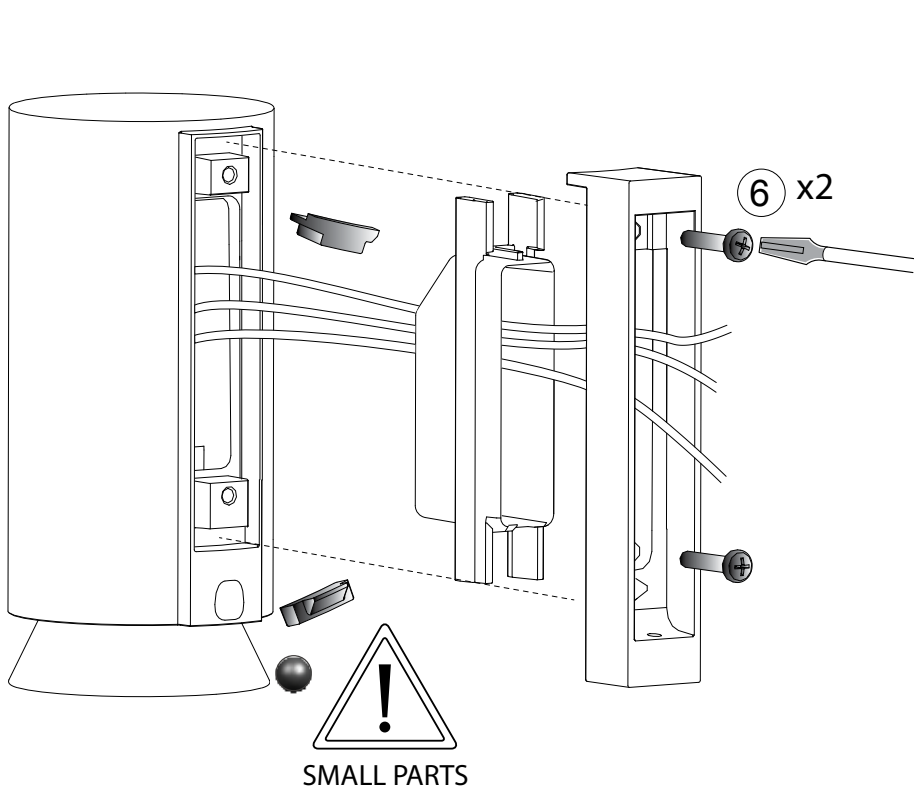
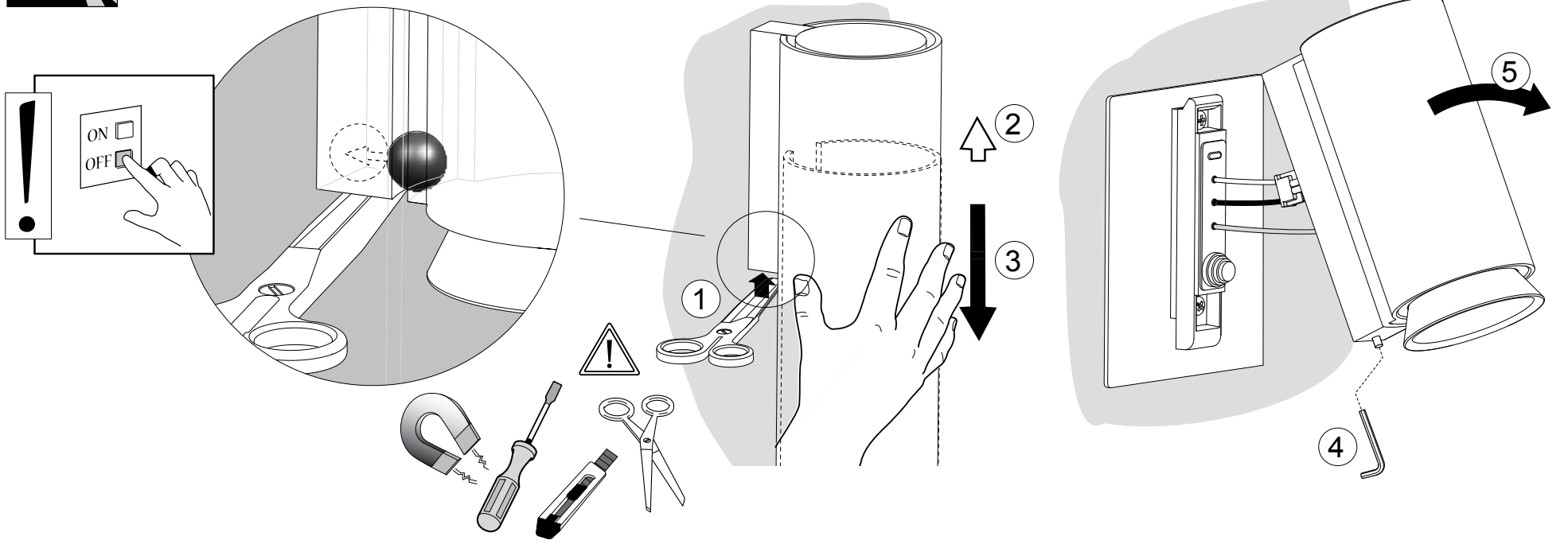


37401-12



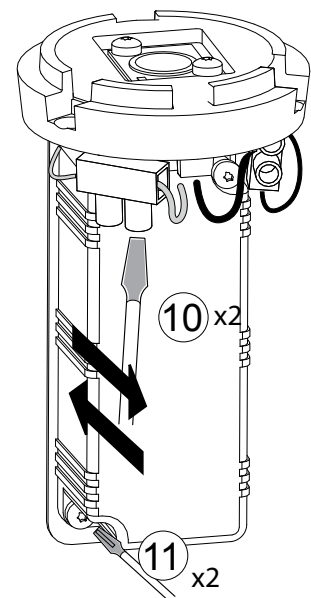
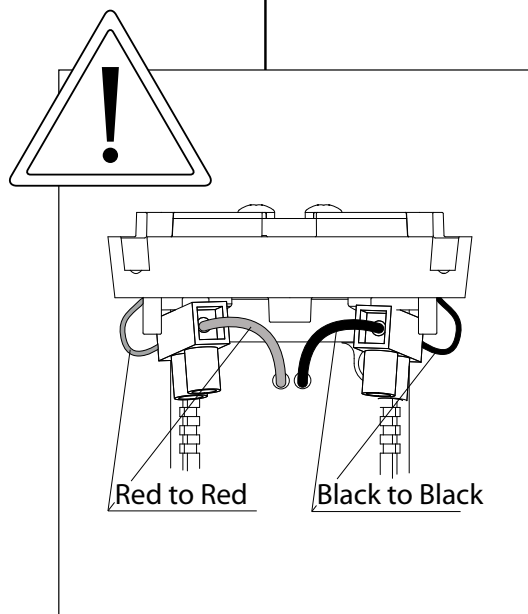
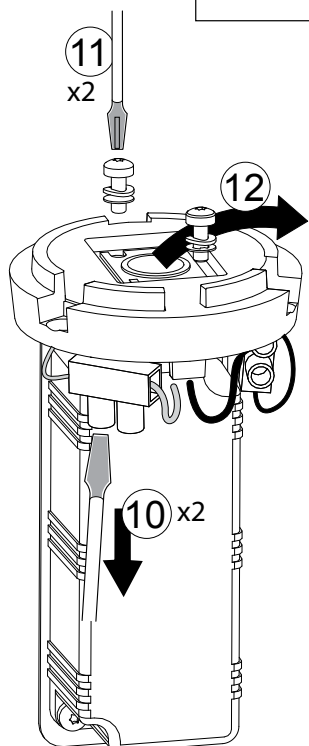


37401-I2

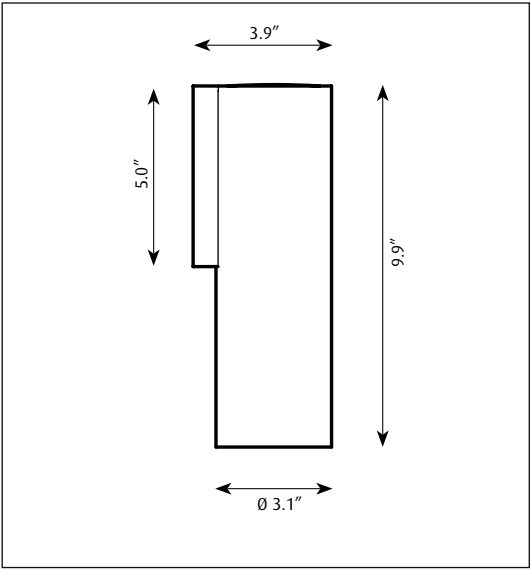


Change of LED unit

Change of Driver unit



Design Fosters & Partners



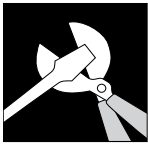
37401-11

Light source	Voltage	Weight	Electric shock protection	Ingress protection
LED	120V	2.2 Lbs	Cl. I	IP 44, wet location

Recommended cleaning substances:
Wipe off dust wiht a dry, soft cloth. Remove greasy spots etc. with a soft cloth dampe-
ned in lukewarm water (<122° F/ 50° C) with a mild detergent.

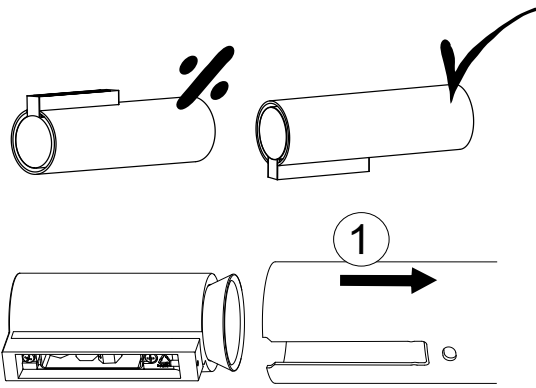
Warning: Scouring powder and similar substances will scratch surfaces.

All installation is subject to local code and jurisdiction. Consult a qualified electrician to
ensure correct branch circuit conductor.



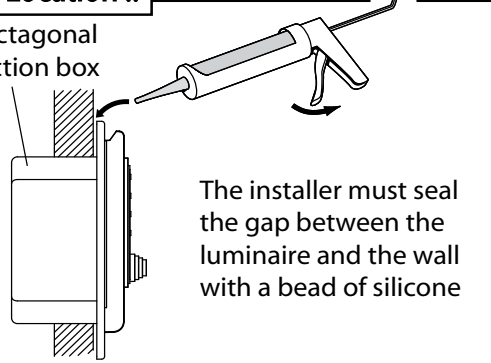
2 mm

37401-11



For Wet Location !!

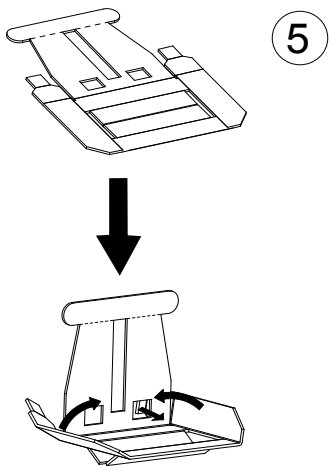
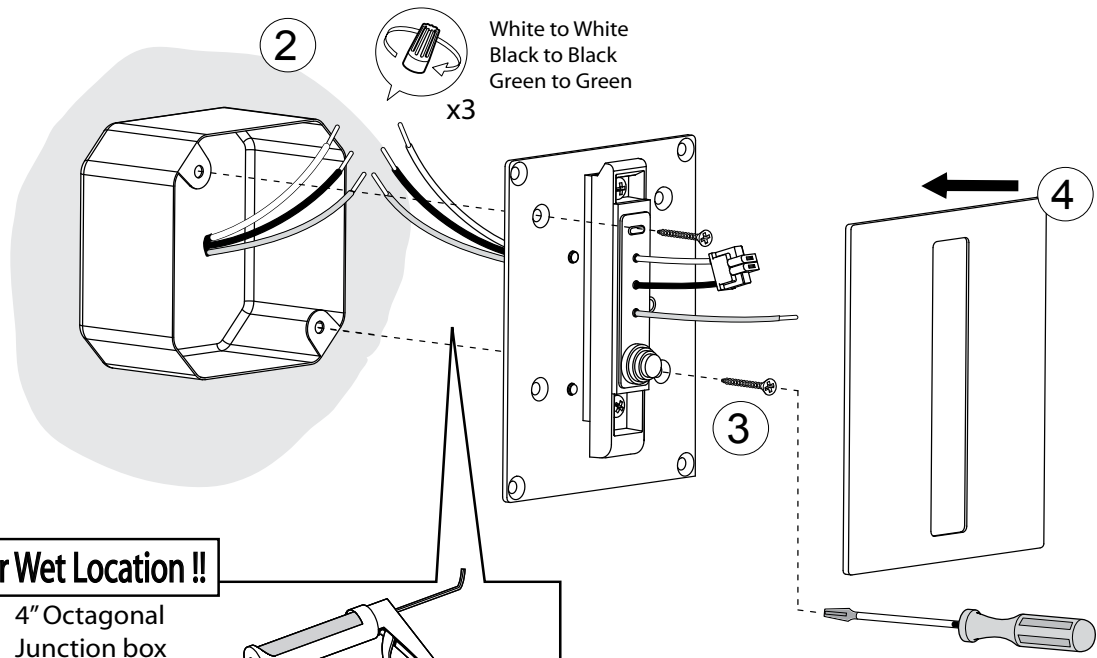
4" Octagonal
Junction box



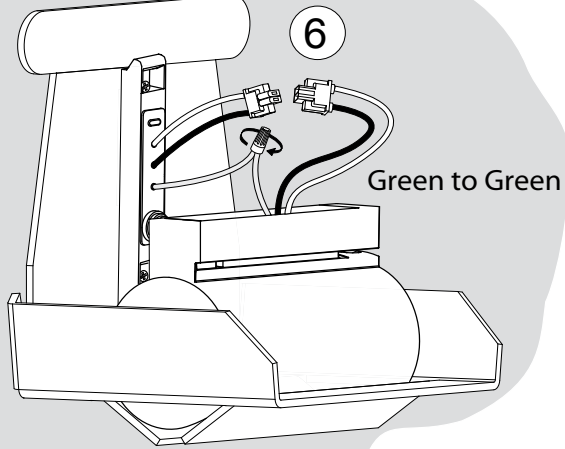
The installer must seal
the gap between the
luminaire and the wall
with a bead of silicone

White to White
Black to Black
Green to Green

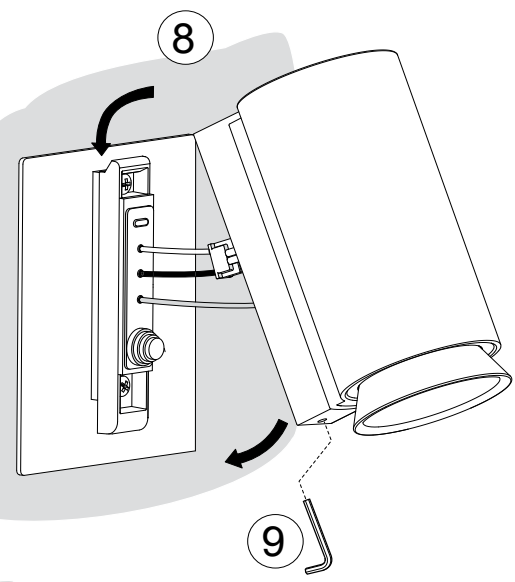
x3



5

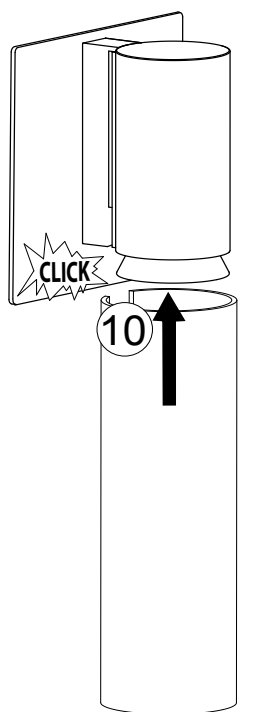


Green to Green



8

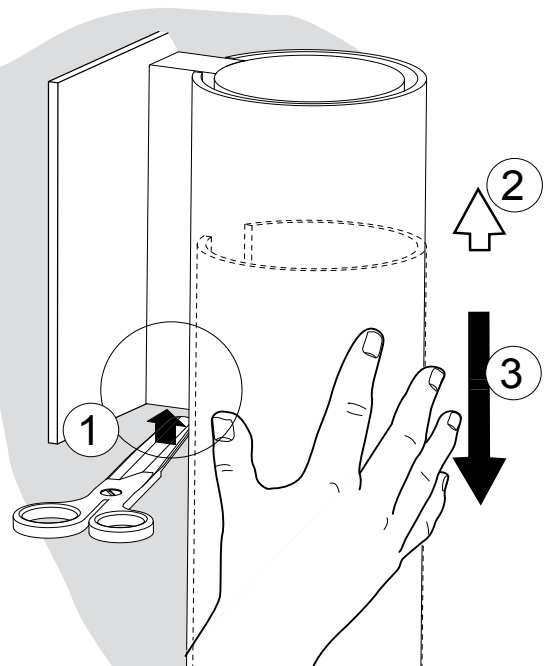
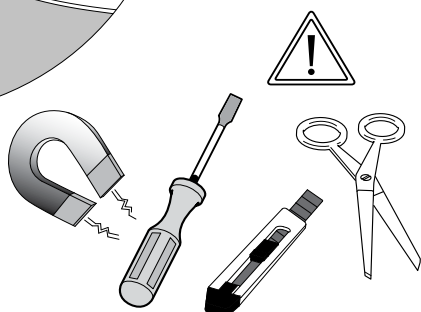
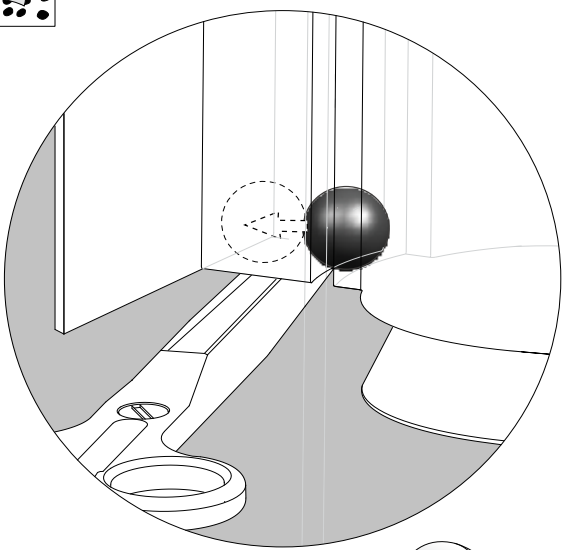
9



10

CLICK

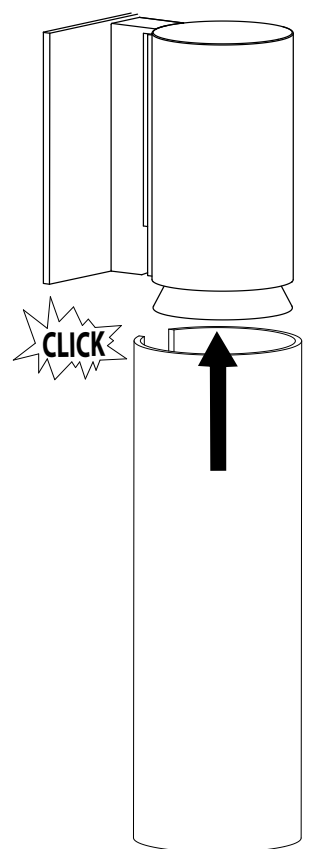
CLICK



1

2

3



CLICK