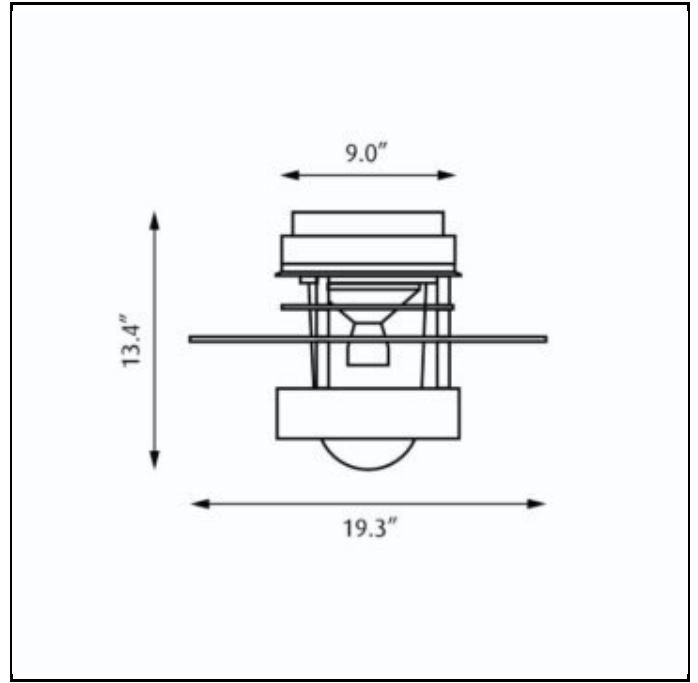


# Albertslund Maxi Ceiling



**Design** Jens Møller-Jensen

**Concept** The fixture provides characteristic symmetrical and functional lighting. The horizontal ring reflects the light downwards, but its position also allows some light to slip past and illuminate the ceiling. The anti-glare ring prevents from horizontal glare, and the diffuser is available either as clear, opal or partly frosted depending on the desired light source.

**Finish** Natural painted aluminum or white, powder coated.

**Material** Diffuser: Injection molded clear polycarbonate, injection molded partly frosted polycarbonate or injection molded white opal polycarbonate. Saturn ring: Die cut aluminum. Anti-glare ring: Spun aluminum. Housing: Die cast aluminum.

**Mounting** Surface: Mounted directly over a recessed 4" octagonal junction box.

**Weight** Max. 17 lbs.

**Label** cULus, Wet location. IBEW.

## Specification notes

- CMH variant provided with a partly frosted diffuser.
- CF variant provided with an opal diffuser.
- MH variant provided with a clear diffuser.
- CMH variant provided with one 120-277V integral electronic ballast.
- CF variant provided with an universal wattage socket and one 120-277V integral electronic ballast.
- MH variant provided with one 120/208/240/277V integral open core coil ballast.

## Info notes

- All diffusers are U.V. stabilized polycarbonate.
- The comparable EU version has the following classification: Ingress Protection Code: IP44.

# Albertslund Maxi Ceiling

ALB-MAX-C-1-100W MH

PRODUCT SPECIFICATION

## Product description

Weblink: 135

Design: Jens Møller-Jensen

**Light Concept:** The fixture provides characteristic symmetrical and functional lighting. The horizontal ring reflects the light downwards, but its position also allows some light to slip past and illuminate the ceiling. The anti-glare ring prevents from horizontal glare, and the diffuser is available either as clear, opal or partly frosted depending on the desired light source.

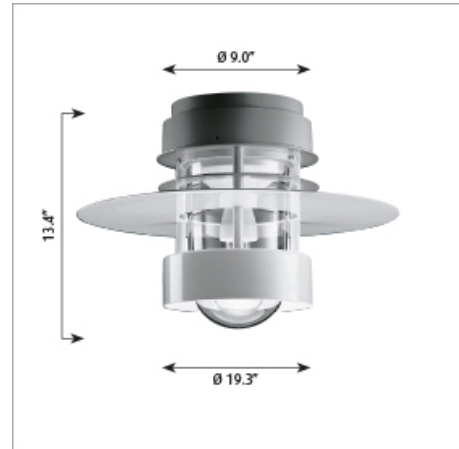
**Finish:** Natural painted aluminum or white, powder coated.

**Material:** Diffuser: Injection molded clear polycarbonate, injection molded partly frosted polycarbonate or injection molded white opal polycarbonate. Saturn ring: Die cut aluminum. Anti-glare ring: Spun aluminum. Housing: Die cast aluminum.

**Mounting:** Surface: Mounted directly over a recessed 4" octagonal junction box.

**Weight:** Max. 17 lbs.

**Label:** cULus, Wet location. IBEW.



Product code	Light source	Voltage	Finish
ALB-MAX-C	1/70W/CMH/T-6 G12 1/100W/MH/ED-17 medium 1/26W/32W/42W/CF GX24q-3/4	120/208/240/277V 120-277V	NAT PAINT ALU WHT

- a. CMH variant provided with a partly frosted diffuser.
- b. CF variant provided with an opal diffuser.
- c. MH variant provided with a clear diffuser.
- d. CMH variant provided with one 120-277V integral electronic ballast.
- e. CF variant provided with an universal wattage socket and one 120-277V integral electronic ballast.
- f. MH variant provided with one 120/208/240/277V integral open core coil ballast.

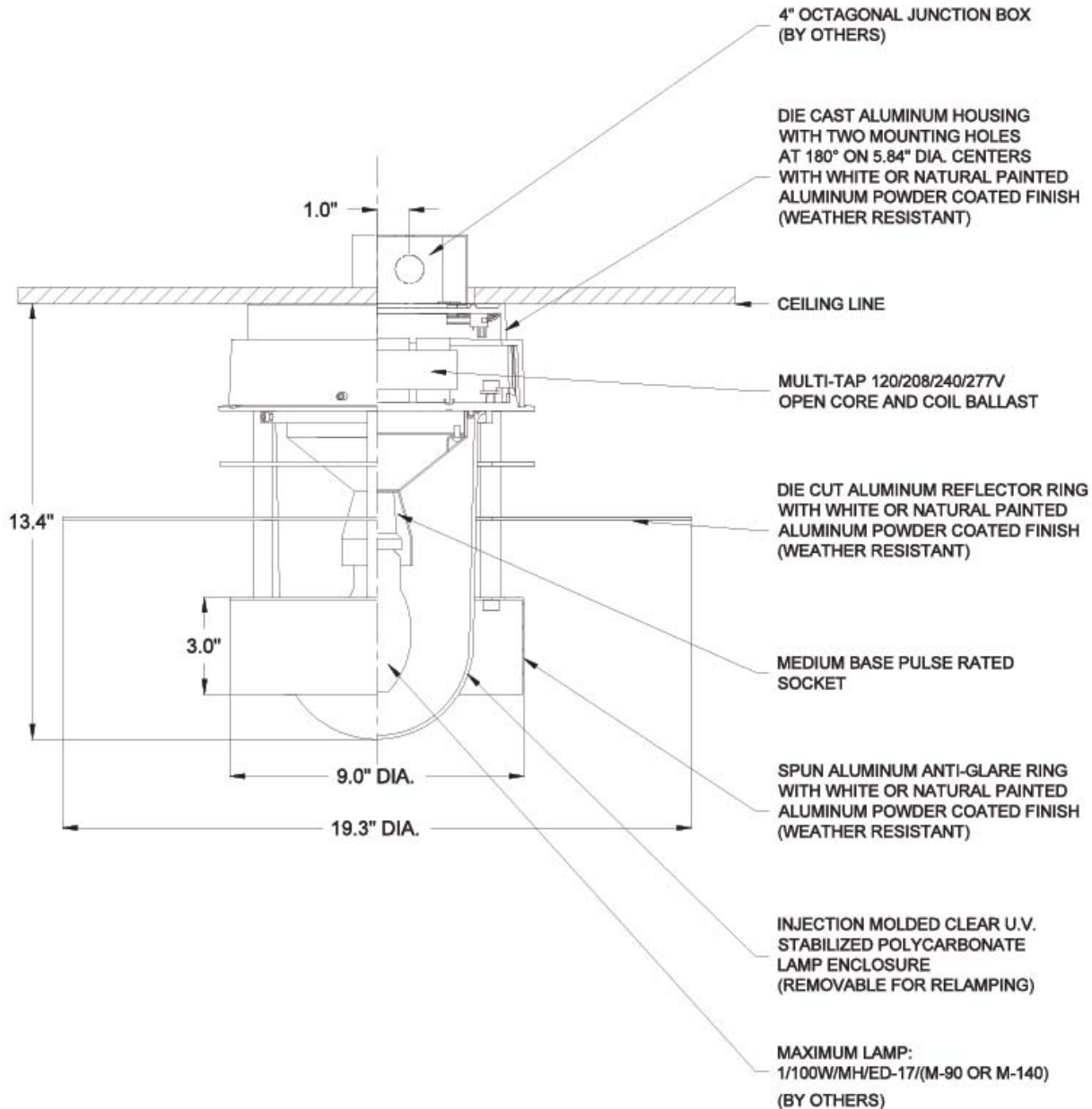
- I. All diffusers are U.V. stabilized polycarbonate.
- II. The comparable EU version has the following classification: Ingress Protection Code: IP44.

# Albertslund Maxi Ceiling

ALB-MAX-C-1-100W MH

PRODUCT SPECIFICATION

## Material description

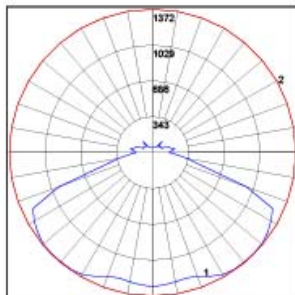


# Albertslund Maxi Ceiling

ALB-MAX-C-1-100W MH

PRODUCT SPECIFICATION

## Light measurements



Photometric Report: ALB-MAX-1-100W-MH-ED-17  
 Report No: 2604290167 Louis Poulsen Lighting A/S  
 Poulsen Report No: ALB-MAX-1-100W-MH-ED-17  
 Luminaire: ALB-MAX  
 Lamp: 1/100W/MH/ED-17  
 Efficiency: 75%

Description: All data shown are per 9300 lumens. This report can be used for calculation on all versions listed below. Use only actual lumen data calculating.

Candlepower Distribution

Vertical Angle	Candela
0	1282.7
5	1270.9
15	1245.0
25	1307.8
35	1366.1
45	1372.3
55	1342.7
65	1288.7
75	957.3
90	158.1
120	101.7
150	56.8
180	48.5

Zonal Lumen Summary

Zone	Lumens	% Lamp	% Fixture
0-20	475.89	5.10	6.80
0-30	1081.46	11.60	15.40
0-40	1937.41	20.80	27.60
0-60	4200.15	45.20	56.80
0-80	5987.92	64.40	85.30
0-90	6251.12	67.20	89.10
10-90	6130.14	65.90	87.40
20-40	1461.51	15.70	20.80
20-50	2522.08	27.10	35.90
40-70	3453.44	37.10	49.20
60-80	1787.77	19.20	25.50
70-80	597.07	6.40	8.50
80-90	263.20	2.80	3.80
90-110	396.64	4.30	5.70
90-120	508.72	5.50	7.20
90-130	594.53	6.40	8.50
90-150	721.34	7.80	10.30
90-180	766.73	8.20	10.90
110-180	370.09	4.00	5.30
0-180	7017.84	75.50	100.00

Coefficient of utilization- Zonal Cavity Method  
 Effective Floor Cavity Reflectance 0.20%

Ceiling Reflectance (%)	60				70				50				30				10				0
	70	50	30	10	70	50	30	10	50	30	10	50	30	10	50	30	10	50	30	10	0
Room Cavity Ratio																					
0	88	88	88	88	85	85	85	85	79	79	79	74	74	74	69	69	69	67			
1	79	74	71	67	76	72	69	65	67	64	62	63	61	58	59	57	55	53			
2	70	63	58	53	68	61	56	51	57	53	49	53	50	46	50	47	44	42			
3	63	54	48	42	61	53	46	41	49	44	39	46	41	38	43	39	36	34			
4	57	47	40	34	55	46	39	34	43	37	32	40	35	31	37	33	30	28			
5	52	42	34	29	50	40	33	28	38	32	27	35	30	26	33	29	25	23			
6	48	37	30	24	46	36	29	24	33	28	23	31	26	22	29	25	21	19			
7	44	33	26	21	42	32	25	21	30	24	20	28	23	19	27	22	18	17			
8	41	30	23	18	39	29	23	18	27	22	17	26	21	17	24	20	16	15			
9	38	27	21	16	36	26	20	16	25	19	15	23	18	15	22	18	14	13			
10	35	25	19	14	34	24	18	14	23	17	14	22	17	13	20	16	13	11			

# Albertslund Maxi Ceiling

ALB-MAX-C-1-70W CMH

PRODUCT SPECIFICATION

## Product description

Weblink: 135

Design: Jens Møller-Jensen

**Light Concept:** The fixture provides characteristic symmetrical and functional lighting. The horizontal ring reflects the light downwards, but its position also allows some light to slip past and illuminate the ceiling. The anti-glare ring prevents from horizontal glare, and the diffuser is available either as clear, opal or partly frosted depending on the desired light source.

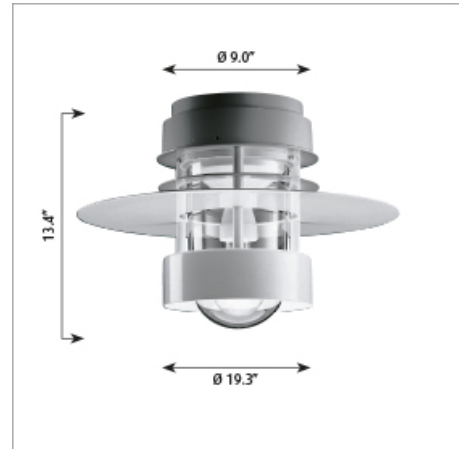
**Finish:** Natural painted aluminum or white, powder coated.

**Material:** Diffuser: Injection molded clear polycarbonate, injection molded partly frosted polycarbonate or injection molded white opal polycarbonate. Saturn ring: Die cut aluminum. Anti-glare ring: Spun aluminum. Housing: Die cast aluminum.

**Mounting:** Surface: Mounted directly over a recessed 4" octagonal junction box.

**Weight:** Max. 17 lbs.

**Label:** cULus, Wet location. IBEW.



Product code	Light source	Voltage	Finish
ALB-MAX-C	1/70W/CMH/T-6 G12 1/100W/MH/ED-17 medium 1/26W/32W/42W/CF GX24q-3/4	120/208/240/277V 120-277V	NAT PAINT ALU WHT

- a. CMH variant provided with a partly frosted diffuser.
- b. CF variant provided with an opal diffuser.
- c. MH variant provided with a clear diffuser.
- d. CMH variant provided with one 120-277V integral electronic ballast.
- e. CF variant provided with an universal wattage socket and one 120-277V integral electronic ballast.
- f. MH variant provided with one 120/208/240/277V integral open core coil ballast.

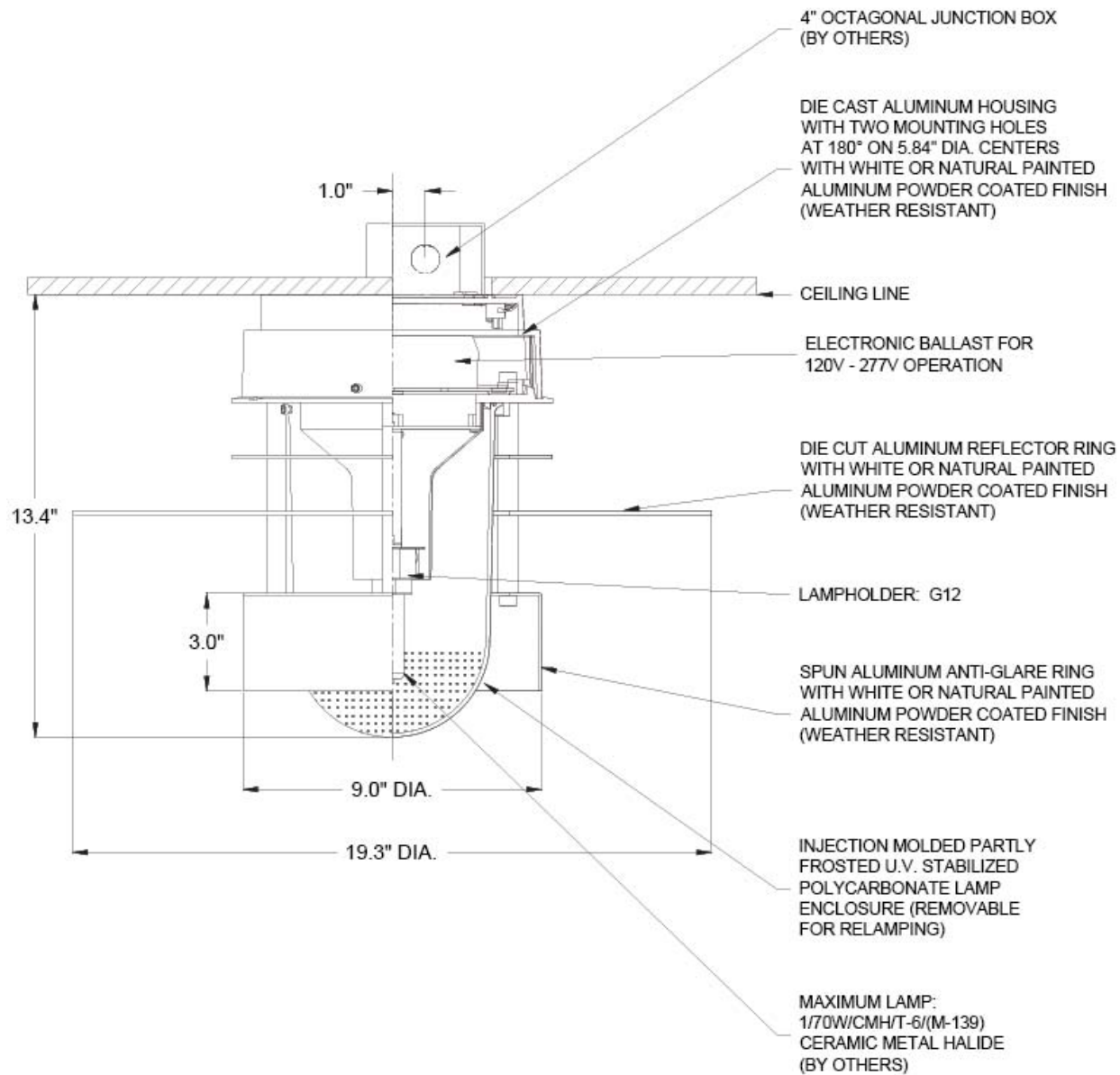
- I. All diffusers are U.V. stabilized polycarbonate.
- II. The comparable EU version has the following classification: Ingress Protection Code: IP44.

# Albertslund Maxi Ceiling

ALB-MAX-C-1-70W CMH

PRODUCT SPECIFICATION

## Material description

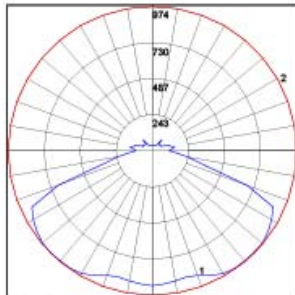


# Albertslund Maxi Ceiling

ALB-MAX-C-1-70W CMH

PRODUCT SPECIFICATION

## Light measurements



Photometric Report: ALB-MAX-1-70W-CMH-T6-G12  
 Report No: 2604190200 Louis Poulsen Lighting A/S  
 Poulsen Report No: ALB-MAX-1-70W-CMH-T6-G12  
 Luminaire: ALB-MAX  
 Lamp: 1/70W/CMH/T6-G12  
 Efficiency: 75%  
 Description: All data shown are per 6600 lumens. This report can be used for calculation on all versions listed below. Use only actual lumen data calculating.

Candlepower Distribution

Vertical Angle	Candela
0	910.3
5	902.0
15	892.4
25	828.1
35	868.5
45	873.9
55	952.9
65	900.4
75	343.9
90	112.2
120	72.2
150	40.3
180	34.5

Zonal Lumen Summary

Zone	Lumens	% Lamp	% Fixture
0-20	337.73	5.10	6.80
0-30	787.47	11.80	15.40
0-40	1374.91	20.80	27.80
0-60	2980.76	45.20	59.80
0-80	4249.54	64.40	85.30
0-90	4436.33	67.20	89.10
10-90	4350.47	65.90	87.40
20-40	1037.19	15.70	20.80
20-50	1789.86	27.10	35.90
40-70	2450.89	37.10	49.20
60-80	1268.77	19.20	25.50
70-80	423.74	6.40	8.50
80-90	186.79	2.80	3.80
90-110	281.48	4.30	5.70
90-120	381.00	5.50	7.20
90-130	421.88	6.40	8.50
90-150	511.87	7.80	10.30
90-180	544.07	8.20	10.90
110-180	282.61	4.00	5.30
0-180	4980.4	75.50	100.00

Coefficient of utilization- Zonal Cavity Method  
 Effective Floor Cavity Reflectance 0.20%

Room Cavity Ratio	Ceiling Reflectance (%)				70				50				30				10				0
	80	50	30	10	70	50	30	10	50	30	10	50	30	10	50	30	10	0			
0	88	88	88	88	85	85	85	85	79	79	79	74	74	74	69	69	69	67			
1	79	74	71	67	76	72	69	65	67	64	62	63	61	58	59	57	55	53			
2	70	63	58	53	68	61	56	51	57	53	49	53	50	46	50	47	44	42			
3	63	54	48	42	61	53	46	41	49	44	39	46	41	38	43	39	36	34			
4	57	47	40	34	55	46	39	34	43	37	32	40	35	31	37	33	30	28			
5	52	42	34	29	50	40	33	28	38	32	27	35	30	26	33	29	25	23			
6	48	37	30	24	46	36	29	24	33	28	23	31	26	22	29	25	21	19			
7	44	33	26	21	42	32	25	21	30	24	20	28	23	19	27	22	18	17			
8	41	30	23	18	39	29	23	18	27	22	17	26	21	17	24	20	16	15			
9	38	27	21	16	36	26	20	16	25	19	15	23	18	15	22	18	14	13			
10	35	25	19	14	34	24	18	14	23	17	14	22	17	13	20	16	13	11			

# Albertslund Maxi Ceiling

ALB-MAX-C-1-42W-CF

PRODUCT SPECIFICATION

## Product description

Weblink: 135

Design: Jens Møller-Jensen

**Light Concept:** The fixture provides characteristic symmetrical and functional lighting. The horizontal ring reflects the light downwards, but its position also allows some light to slip past and illuminate the ceiling. The anti-glare ring prevents from horizontal glare, and the diffuser is available either as clear, opal or partly frosted depending on the desired light source.

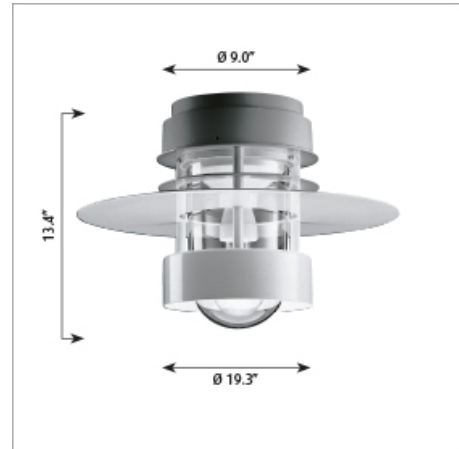
**Finish:** Natural painted aluminum or white, powder coated.

**Material:** Diffuser: Injection molded clear polycarbonate, injection molded partly frosted polycarbonate or injection molded white opal polycarbonate. Saturn ring: Die cut aluminum. Anti-glare ring: Spun aluminum. Housing: Die cast aluminum.

**Mounting:** Surface: Mounted directly over a recessed 4" octagonal junction box.

**Weight:** Max. 17 lbs.

**Label:** cULus, Wet location. IBEW.



Product code	Light source	Voltage	Finish
ALB-MAX-C	1/70W/CMH/T-6 G12 1/100W/MH/ED-17 medium 1/26W/32W/42W/CF GX24q-3/4	120/208/240/277V 120-277V	NAT PAINT ALU WHT

- a. CMH variant provided with a partly frosted diffuser.
- b. CF variant provided with an opal diffuser.
- c. MH variant provided with a clear diffuser.
- d. CMH variant provided with one 120-277V integral electronic ballast.
- e. CF variant provided with an universal wattage socket and one 120-277V integral electronic ballast.
- f. MH variant provided with one 120/208/240/277V integral open core coil ballast.

- I. All diffusers are U.V. stabilized polycarbonate.
- II. The comparable EU version has the following classification: Ingress Protection Code: IP44.

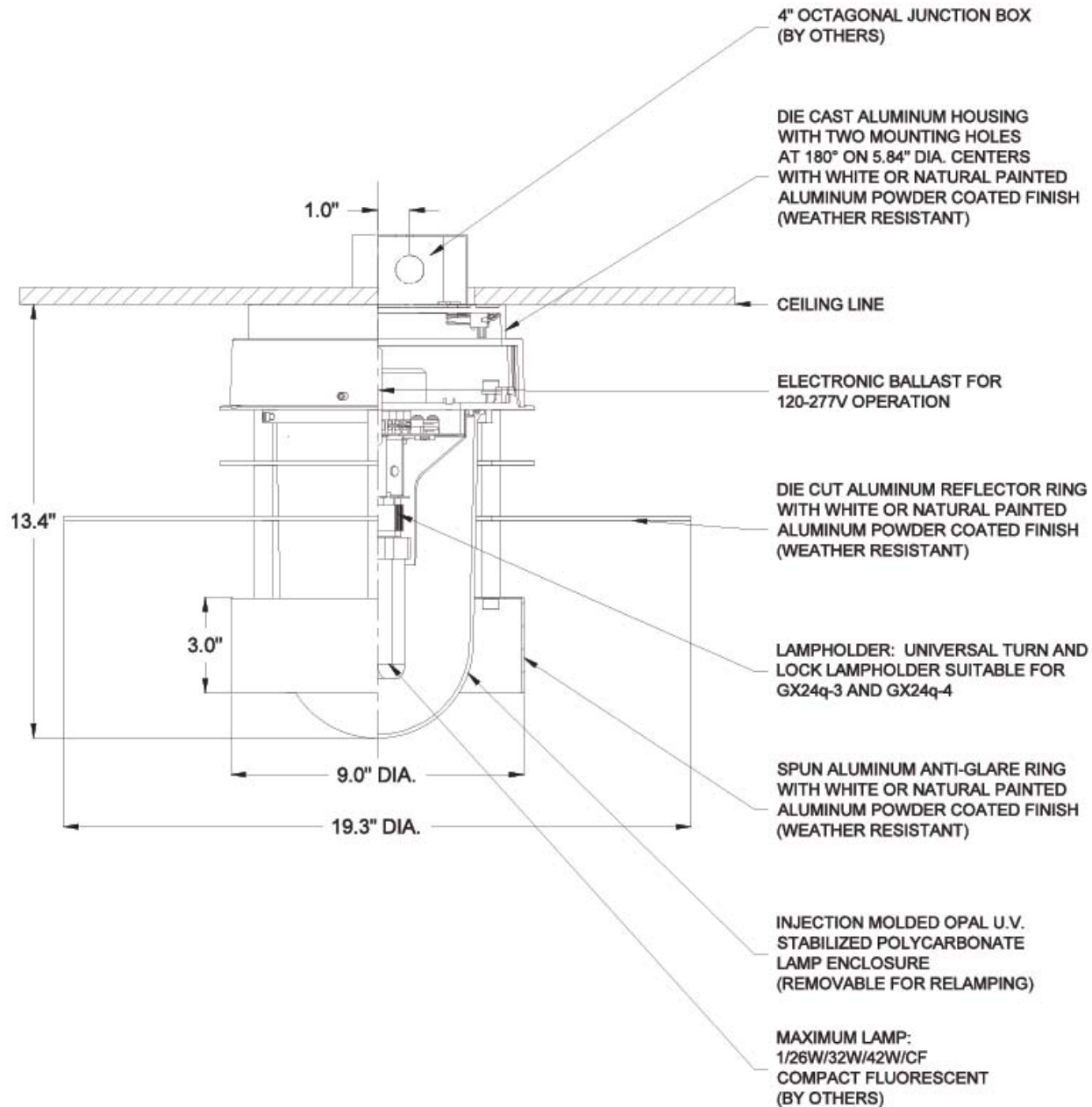


# Albertslund Maxi Ceiling

ALB-MAX-C-1-42W-CF

PRODUCT SPECIFICATION

## Material description

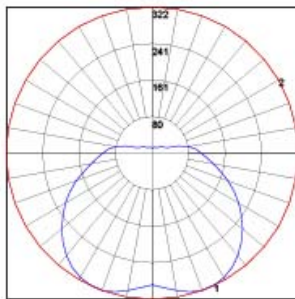


# Albertslund Maxi Ceiling

ALB-MAX-C-1-42W-CF

PRODUCT SPECIFICATION

## Light measurements



**Photometric Report:** ALB-MAX-1-42W-GX24Q-3  
**Report No:** 5742905701 Louis Poulsen Lighting A/S  
**Poulsen Report No:** ALB-MAX-1-42W-GX24Q-3  
**Luminaire:** ALB-MAX  
**Lamp:** 1x32W CF  
**Efficiency:** 68%  
**Description:** All data shown are per 3200 lumens. This report can be used for calculation on all versions listed below. Use only actual lumen data calculating.

Candlepower Distribution

Vertical Angle	Candela
0	289.9
5	297.6
15	307.6
25	321.9
35	307.5
45	277.9
55	240.5
65	199.7
75	155.1
90	107.9
120	27.2
150	14.3
180	12.1

Zonal Lumen Summary

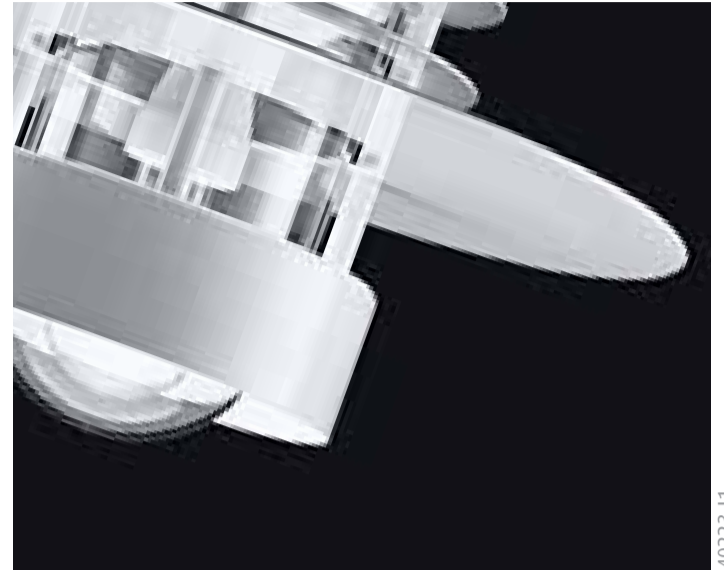
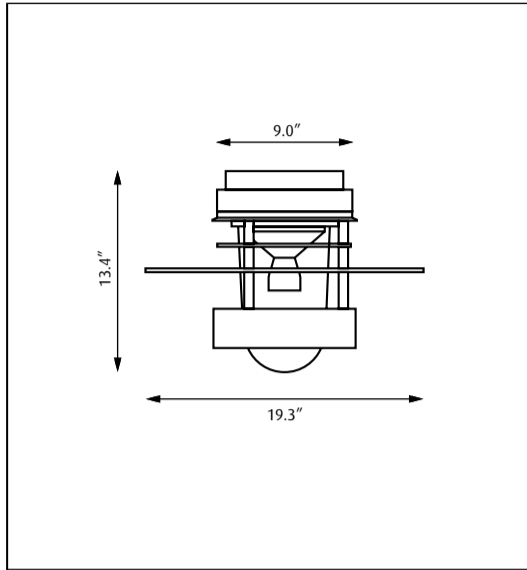
Zone	Lumens	% Lamp	% Fixture
0-20	118.23	3.70	7.20
0-30	266.54	8.30	16.30
0-40	458.84	14.30	28.00
0-60	888.87	27.80	54.20
0-80	1251.87	39.10	76.30
0-90	1384.92	43.30	84.50
10-90	1356.24	42.40	82.70
20-40	340.61	10.60	20.80
20-50	555.20	17.40	33.90
40-70	627.81	19.60	38.30
60-80	363.00	11.30	22.10
70-80	165.23	5.20	10.10
80-90	133.04	4.20	8.10
90-110	168.00	5.30	10.20
90-120	198.35	6.20	12.10
90-130	220.20	6.90	13.40
90-150	243.41	7.60	14.80
90-180	254.88	8.00	15.50
110-180	86.88	2.70	5.30
0-180	1639.8	51.20	100.00

Coefficient of utilization- Zonal Cavity Method  
Effective Floor Cavity Reflectance 0.20%

Ceiling Reflectance (%)	80				70				50				30				10				0
Wall Reflectance (%)	70	50	30	10	70	50	30	10	50	30	10	50	30	10	50	30	10	50	30	10	0
<b>Room Cavity Ratio</b>																					
0	59	59	59	59	57	57	57	57	53	53	53	49	49	49	45	45	45	43	43	43	
1	52	49	46	44	50	47	44	42	43	41	39	40	38	37	37	35	34	33	33	33	
2	47	42	38	34	45	40	36	33	37	34	31	34	31	29	31	29	27	26	26	26	
3	42	36	31	28	40	35	30	27	32	28	25	29	26	24	27	25	22	21	21	21	
4	38	32	27	23	36	30	26	22	28	24	21	26	23	20	24	21	19	17	17	17	
5	35	28	23	19	33	27	22	19	25	21	18	23	20	17	21	18	16	15	15	15	
6	32	25	20	17	31	24	20	16	22	18	15	21	17	15	19	16	14	13	13	13	
7	30	22	18	14	28	22	17	14	20	16	13	19	15	13	17	14	12	11	11	11	
8	28	20	16	13	26	20	15	12	18	15	12	17	14	11	16	13	11	10	10	10	
9	26	19	14	11	25	18	14	11	17	13	11	16	12	10	15	12	10	9	9	9	
10	24	17	13	10	23	17	13	10	15	12	9	14	11	9	14	11	9	8	8	8	

# Albertslund Maxi Ceiling

Design Jens Møller-Jensen



40223-11

Light source	Voltage	Weight	Electric shock protection	Ingress protection
<b>1/26W/32W/42W/CF GX24q-3/4</b> <b>1/70W/CMH/T-6 G12</b> <b>1/100W/MH/ED-17 medium</b>	<b>120-277V</b> <b>120-277V</b> <b>120/208/240/277V</b>	<b>17 Lbs</b>	<b>Cl. I</b>	<b>IP 44, wet location</b>

**Recommended cleaning substances:**

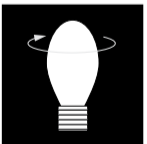
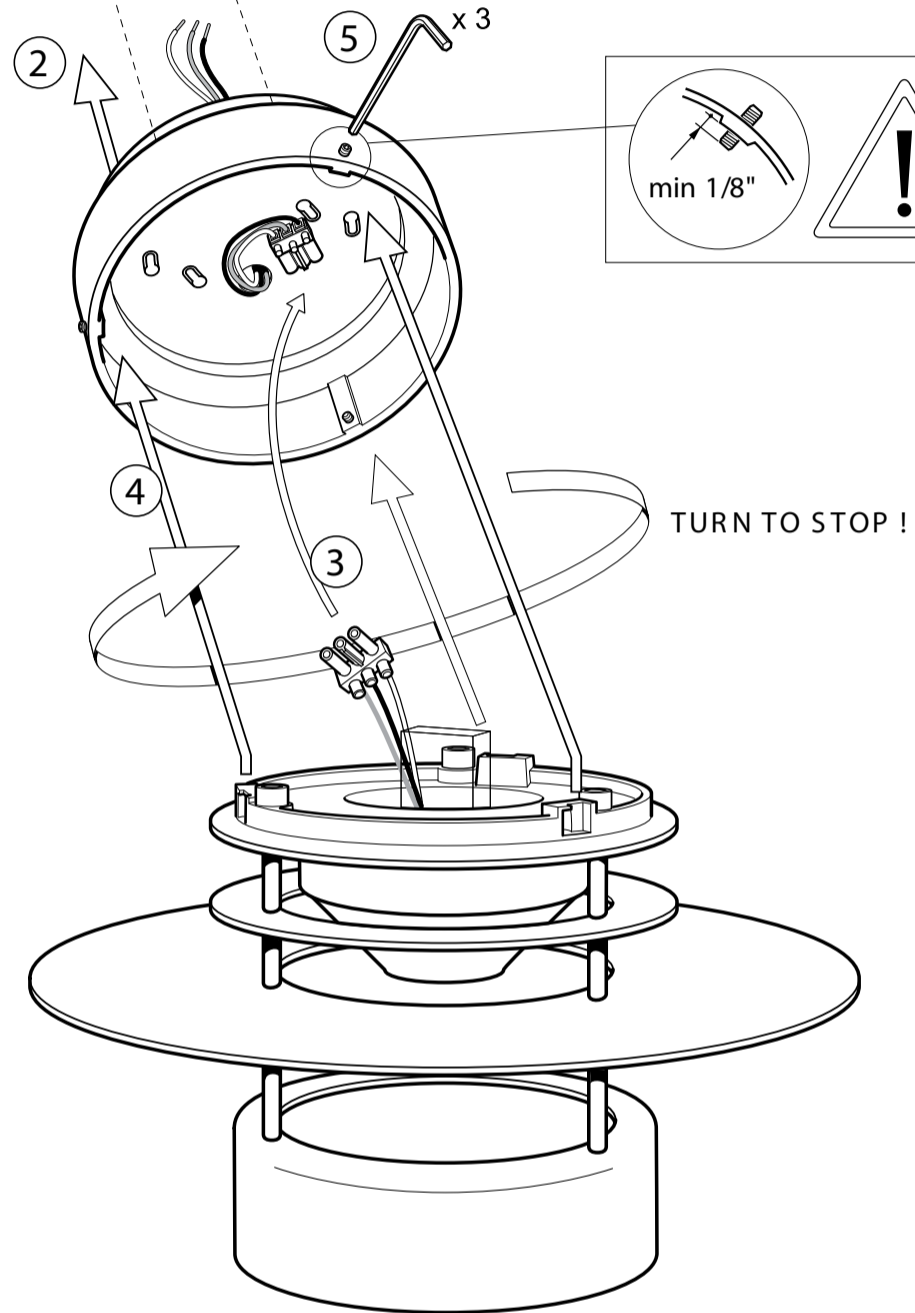
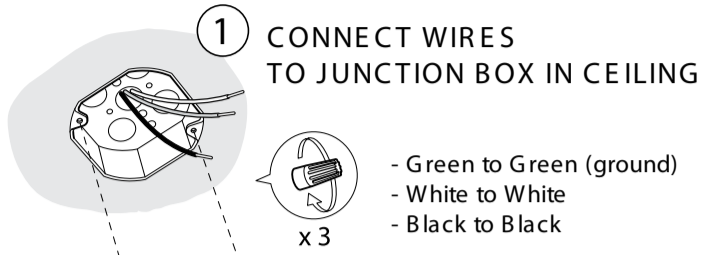
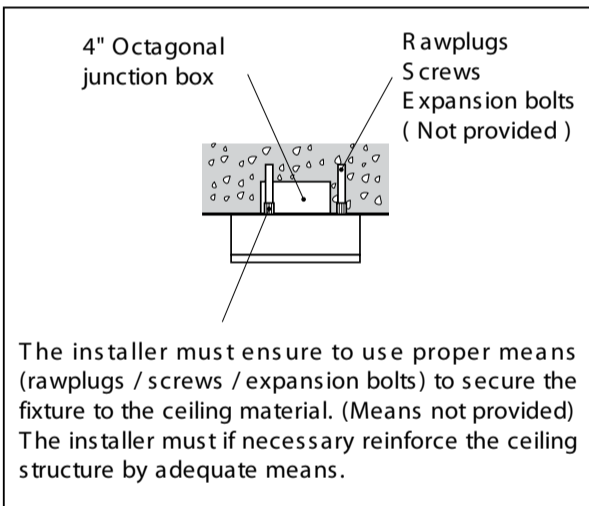
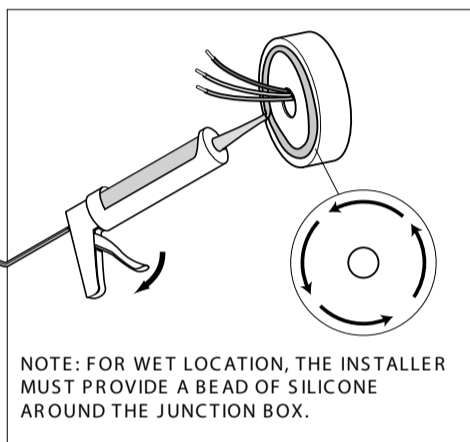
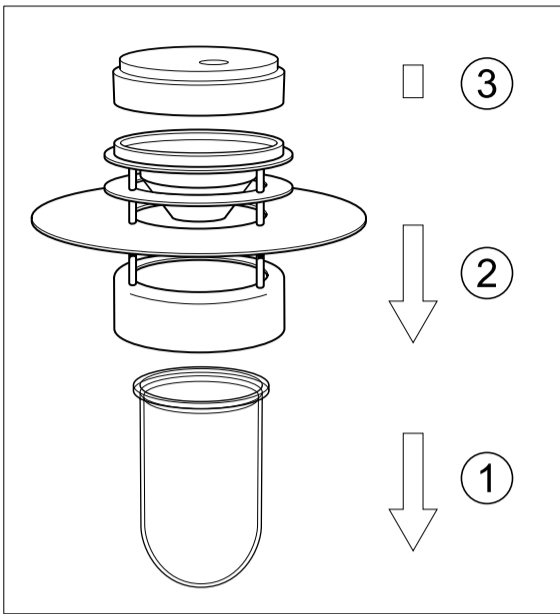
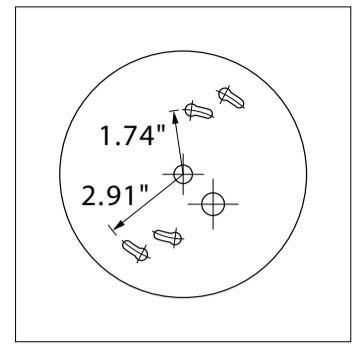
Wipe off dust with a dry, soft cloth. Remove greasy spots etc. with a soft cloth dampened in lukewarm water (<122° F/ 50° C) with a mild detergent.

Warning: Scouring powder and similar substances will scratch surfaces.

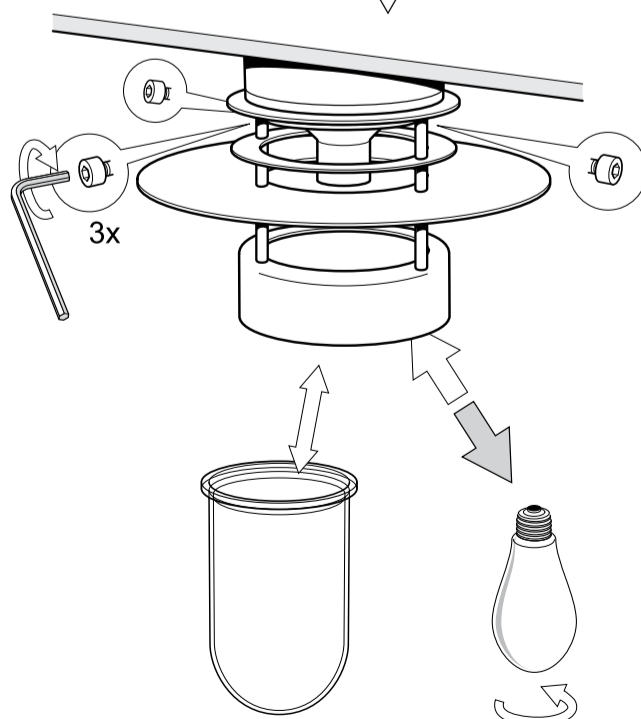
All installation is subject to local code and jurisdiction. Consult a qualified electrician to ensure correct branch circuit conductor. The installer must ensure that the ceiling can support the luminaire's weight. The installer must if necessary reinforce the ceiling structure by adequate means.



Mount the luminaire junction box to the ceiling, over a 4" junction box or directly to the junction box



Do NOT remove screws !



Use only light source in accordance to the lamp Replacement label on the luminaire