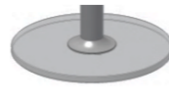


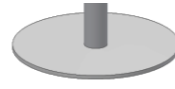


Model type	Leg / metal parts	Size
	steel polished chrome steel tube 6 cm ø	W - L - H approx. in cm
	<b>Base 1</b> glass 15 / 19 mm standard	

1010 dining table round	50 ø	80 ø x 72
	50 ø	90 ø x 72
	50 ø	100 ø x 72
	60 ø	110 ø x 72



base 1 - standard  
glass base round, 15 / 19 mm  
50 cm ø resp. 60 cm ø



base 3  
steel base round, 10 mm  
50 cm ø resp. 60 cm ø

Note:

Base is of same material as top.

	top	base
glass clear	12 mm	19 mm
white glass clear	12 mm	15 mm
white glass lacquered	12 mm	15 mm
satinated white glass	12 mm	15 mm
satinated white glass + lacquered	12 mm	15 mm

Top	Top	Top	Top	Top
glass	white glass	white glass	satinated white glass	satinated white glass
12 mm tempered clear	12 mm tempered clear	12 mm tempered lacquered (standard colors)	12 mm tempered clear	12 mm tempered lacquered (standard colors)

**Price supplements for special orders:**

special RAL / NCS / SIKKENS colors for lacquered white glass  
(surcharge to be added to the price of lacquered white or satinated glass)  
base 3: steel polished chrome  
base 3: steel matt chrome  
pedestal (leg / metal parts) matt chrome  
special height from 50 to 110 cm high