

cc-tapis®

handmade rugs

GENERAL CATALOGUE
2016-2017

BORN IN FRANCE. DESIGNED IN MILAN. PRODUCED IN NEPAL.

cc-tapis was created in 2011 by the traditional Persian house Maison Chamszadeh, founded in 1943 and well known in France for the quality of its handknotted rugs. The main headquarters are now in Milan, where a team of designers innovate through a new approach to traditional methods. Undyed raw materials, innovative weaving patterns and techniques are key parts of the process.

All cc-tapis rugs are completely handknotted by expert Tibetan artisans in Nepal. A strong respect for the materials and for the culture of this ancient craft is reflected in the company's eco-friendly approach to every step of the production, ranging from the hand-spinning of the softest Himalayan wool to the use of purified rainwater for the washing of the final products, making each one of cc-tapis rugs unique.

Far from mass production, cc-tapis aims to offer a tailored service to those who understand and enjoy a high-end product, where a 3 month production time contains a story of ageless culture.



WHAT IS A HANDKNOTTED RUG?

It is a rug where every knot has been made by hand, which is quite a task if you can imagine that a cc-tapis rug can have up to 232.000 knots per square meter.

We are proud to say that no machines are ever used in our process and we still produce rugs the way they were produced a century ago. cc-tapis rugs are produced only with a tibetan knot.



PRODUCTION

In order to better appreciate and know our rugs, here is a brief resumé of the weaving process. Rugs are knotted on a loom. The model containing all the information on the design and color is slipped behind the loom, for the weavers to check at all times.

The vertical threads stretched on the loom are called warp, with the terminal ends creating the fringes of the future rug. The transversal threads are the weft, and ensure firmness to the artefact. The knots form the pile. The kilim is the woven part at the end of the carpet, between the pile and the fringes, it also can be decorative.

Once it is knotted, the rug is shaven and, if necessary, the details of the design are carved out (embossing). In order to eliminate all unnecessary remains, and to properly fix the color, the rug is thoroughly washed with fresh cold water, brushed and stretched out under the sunshine to dry.

MATERIALS

Himalayan wool

Himalayan wool comes from Tibetan Highland sheep, a robust and durable wool which is rich in natural lanolin. Lanolin gives the wool its strength and protects the sheep from the harsh weather in the Himalayas whilst making the wool unique as when dyed, it never becomes flat. The wool maintains an incredible depth to the color and the lanolin also makes the wool naturally stain resistant.

Pure silk

cc-tapis uses pure silk, made by the silk worm, which is imported directly from China. It is an extremely fine material with an incredible shine which complements almost any design.

Bamboo silk

A fibre created from bamboo cellulose. It is a natural and sustainable material with a thick and smooth texture. It has a beautiful shine very similar to pure silk. We recommend it for projects where clients would like full silky rugs with a thick, lustrous and high-pile.

Aloe (or nettle)

Aloe is a local nepali word for a kind of nettle which grows abundantly in Nepal.

A material that once it has been handcarded into a yarn is strong and extremely durable. It has a harder texture than wool and due to this hardness we recommend it for contract applications or high-traffic areas such as shops or hotels. It does not ever shed any material and also takes dyes very well except for light cold colors.

DYES

In the past vegetable dyes were used but whilst they give a beautiful and natural effect they are very inconsistent. cc-tapis uses both natural dyes, and quality dyes imported from Switzerland which maintain environmental standards and guarantee that our colors are always accurate. As the materials are dyed by hand, a slight variation in color can occur from rug to rug so we always recommend that if you would like multiple bespoke rugs for a project, it is always better to put all the rugs into production at the same time. This way guaranteeing that all the colors will be identical without any variation.

Undyed materials

We often use undyed materials in our rugs. Their natural hues and color variations give depth to a rug and our clients are at liberty to choose from light undyed wool, dark undyed wool, undyed silk, undyed aloe or a combination of all of them.

Abrash Colors

A term used to express colour variations in handknotted rugs. As the wool is hand-spun the yarn has inconsistent thicknesses and natural twists and takes the dye differently. This is then exaggerated by emersing the wool into the dye at different stages, meaning that some wool has less time to absorb the dye, whilst other portions have more. This creates a soft, faded color and non uniform color giving the rug a beautiful vintage feel.

PREPARATION

Hand carding

The process of turning raw wool into yarn. Small brushes are used with tiny metal spikes to brush and detangle the raw wool.

Hand spinning

The newly handcarded wool is spun on a spinning wheel to create long unified strands of yarn. In this stage the thickness of the yarn can be customized, from thick strands to extremely fine strands.

Dying

Our materials are never washed in acids or chemicals before the dying begins. The entire process is done completely by hand and dyed on site for quality control and color consistency purposes. A few strands of yarn are dyed in the beginning to make sure that the correct color is being mixed, once achieved, the master of colors multiplies the recipe to dye large amounts of wool needed for the rug in large pots filled with boiling water. The wool is consistently agitated until it absorbs the color.

The graph

The graph is a highly detailed map which the weavers follow knot by knot. The graph can be printed or made by hand depending on the size of the rug. As you can imagine, printing becomes difficult with a rug as large as 6 X 7m.



1



2



3



4

- 1.undyed wool
- 2.dying
- 3.hand-spun
- 4.wool
- 5.color swatches



5









2

KNOTTING

Each rug is knotted on a vertical loom. The structure is created from horizontal and vertical cotton strands called the warp and weft. Each knot is looped onto the warp and weft and around a metal rod. Once the row of knots is complete the rod is removed and the loops are cut creating the pile. The thicker the diameter of the rod, the bigger the loops and the higher the pile will be.

Once the knotting is complete and the rug is cut from the loom, it undergoes extensive finishing processes, which can often take as much time as the knotting.

FINISHING

Washing

After the knotting is finished all rugs need to be washed, this is to remove any dust that may have accumulated during the knotting process and to make sure that the dyes have set properly. Our rugs are washed in recycled rain water, this means that is no chlorine present but more importantly we never use any chemicals or acids to wash our rugs. This ensures the integrity of the materials, the intensity of the colors but more importantly the well-being of our workers and the environment.

Cleaning

Large wooden oars are used to remove any excess fibres from the rug.

Drying

Once the rug has been washed, it is stretched and dried under the Himalayan sun.

Trimming and embossing

The designs of the rug are delicately trimmed by hand to give further definition to the original design.

Shearing

Levelling the surface of the rug to the desired height.



5

- 1.knotting
- 2.rug on the loom
- 3.drying
- 4.drying
- 5.trimming and embossing
- 6.cleaning



CUSTOMIZATION

Producing our rugs exclusively by hand means that we are able to realize any rug custom made. We can adapt the dimensions, give many of our models new colors, or work with you on a completely new one. There are endless possibilities to create a unique carpet using more than 1200 different colors and materials like wool, silk or aloe, which can be combined to create different textures and varying pile heights.

Between 8 and 24 weeks may be needed to produce our handwoven rugs, depending on the size, the knot-count and the complexity of the design. Upon request we may also produce a sample of the desired carpet.



cc-foreducation

ONLUS



CC-FOR EDUCATION was created in May 2015 by the founders of cc-tapis who have been collaborating in Nepal for the past 15 years. Through their close work with Nepal they formed incredible working and personal relationships with their colleagues and the Nepalese people. With the belief that "education is power" CC-FOR EDUCATION was born. A non-profit organization dedicated to help provide private education to the children of weavers in Nepal. A complete education from kindergarten all the way to high-school graduation.

CC-FOR EDUCATION believes that by giving children an education they can give them the freedom and opportunity to make their own choices creating a brighter future for Nepal.

If you would like to find out how you can be involved, please contact us on: info@cc-foreducation.org or check our website www.cc-foreducation.org.

"EDUCATION IS THE MOST POWERFUL WEAPON YOU CAN USE TO CHANGE THE WORLD" *NELSON MANDELA*



COLLECTION 2016

GIUDECCA
SIGNATURE COLLECTION



Designed by Zanellato/Bortotto

wool and silk
pag.64

P.A.N.E. SOIE
CONTEMPORARY COLLECTION



"In any industry, people that work in a less industrial way, people that have a more artisanal way of thinking, are more open to innovation, a different kind of product, to reinvent. They are never scared to take risks."

Patricia Urquiola.

Dialogue on Credenza and Miscredenza
by Paolo Ferrarini, 2016, courtesy of Spazio Pontaccio

VISIONI
SIGNATURE COLLECTION



Designed by Patricia Urquiola

wool and silk
pag.52

RAZOR
CONTEMPORARY COLLECTION



Designed by the cc-tapis team

wool and silk
pag.84

ECAILLES DEGRADÉ 2.0

CONTEMPORARY COLLECTION



Designed by the cc-tapis team

wool and silk
pag.96

TRACES D'ORIENT
TRACES DE MEMOIRE COLLECTION



Designed by the cc-tapis team

wool and silk
pag. 122

LOST IN THE FIFTIES
CONTEMPORARY COLLECTION



Designed by the cc-tapis team

wool and silk
pag.88

OLDIE SOIE
OLDIE COLLECTION



CREDENZA
SIGNATURE COLLECTION



Designed by Patricia Urquiola
and Federico Pepe

wool and silk
pag.54

For the Quadro Celeste collection, Chiara and Arianna
- founders of Studiopepe - take their inspiration from
archetypal graphic elements such as the numerical grid of
the Quadrato Magico or Magic Square. The Magic Square is
a grid where the total of every row and column including
the diagonal lines always adds up to the same number. This
number is called the magic constant or the magic sum of
the square.

QUADRO CELESTE #1105
SIGNATURE COLLECTION



Designed by Studiopepe.

wool
pag. 58

TRACES D'AUBUSSON
TRACES DE MEMOIRE COLLECTION



Designed by the cc-tapis team

wool and silk
pag. 125

SEGNI MINIMI
OLDIE COLLECTION



cc-tapis®





Check is a journey from the figurative to the abstract. The project starts from the digital implementation of traditional decor broken-down into pixels. After a desaturation of color, the design transforms itself through a theoretical approach that is down to the point, to every knot that creates the rug.









The initial design loses its shape to become an abstract image. Developing this approach the result becomes more and more abstract.

The pile is lost in the repetition of the design, which generates a completely new autonomous design.





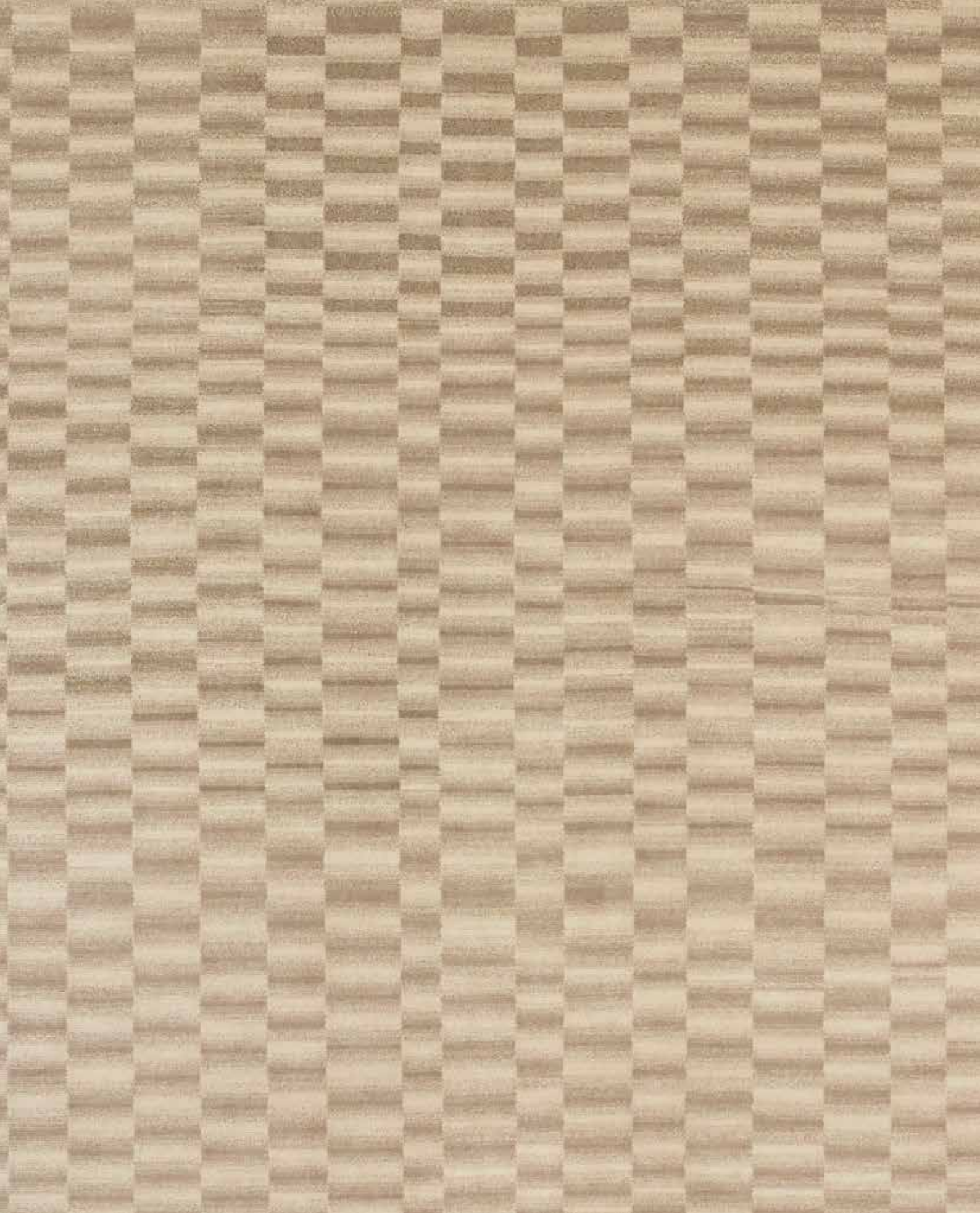






photo by Enrico Costantini

www.palombaserafini.com
www.cc-tapis.com

Palomba Serafini Associati © 2016
All rights reserved.

COLLECTIONS

SIGNATURE

visioni A/B soie	52
credenza soie	54
quadro celeste	56
check (4/5)	62
giudecca	64
primitive weave	66
sacha	70
eyes in chains	72
pilgrimage in tokyo	72
in the woods/in the woods 2.0	74
opstar	76
skin	77
bayou	77
cross (me) knot "A", "B", "C"	78
birth on the dancefloor	80
death on the dancefloor	80
soul on the dancefloor	80
lanolin	81

CONTEMPORARY

razor	84
diamond soie	86
lost in the fifties soie	88
infini	89
mesh	90
infini stucco soie	90
mini infini soie full	91
mini infini soie	92
mini infini	92
p.a.n.e.	94
p.a.n.e. soie	94
maze	95
maze soie	95
ecailles dégradé 2.0	96
coates place	97
damier 2.0	98
damier	99
ncfc	99
mid-mod	100
stella	101

OLDIE

oldie soie	104
oldie full	106
oldie full piombo	109
segni minimi	110
oldie dark	112
oldie light	114
nomad 2.0	115
oldie element cubo	116
oldie element	117
oldie berber tv	118

TRACES DE MEMOIRE

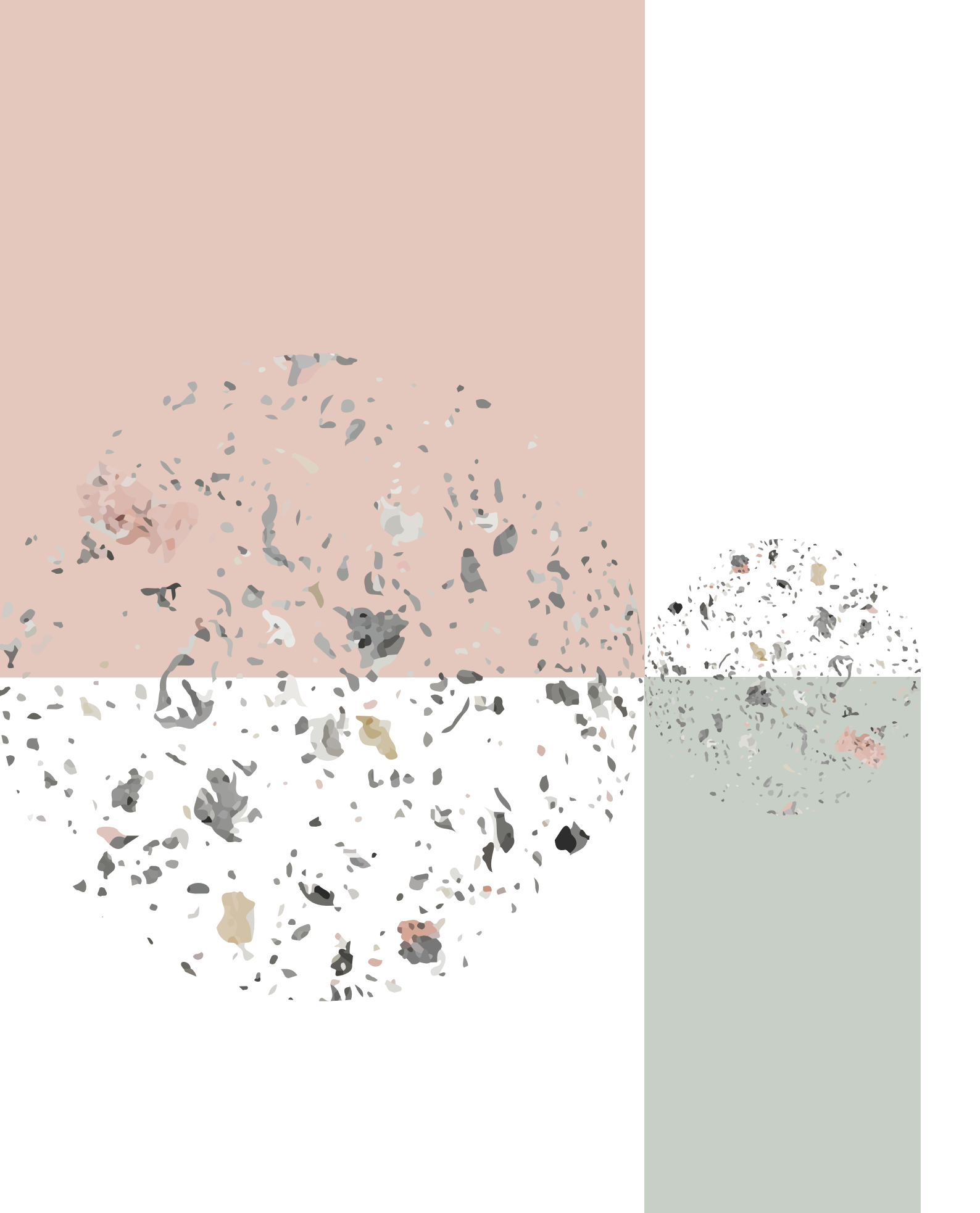
traces d'orient	122
traces d'aubusson full	124
traces d'aubusson	126
traces de kazak	128
traces de damask	129
traces de savonnerie	130
traces de double arbre de vie	132
traces de forêt	132
traces de jardin	133

DIPPED

dipped ribbon	136
dipped frame full	138
dipped cut full	140
dipped origami	141
dipped angle	142
dipped damask	144
dipped scratch	145
dipped damier	146
dipped lotto	147
double dipped lotto	147

ARCHITECTURAL

behind surfaces	150
check 2	152
check 3	153
casellario monocromo	154
cut out monocromo	156
tye 'n dye	158
tye 'n dye soie	158
tye 'n dye bicolor	159



SIGNATURE COLLECTION

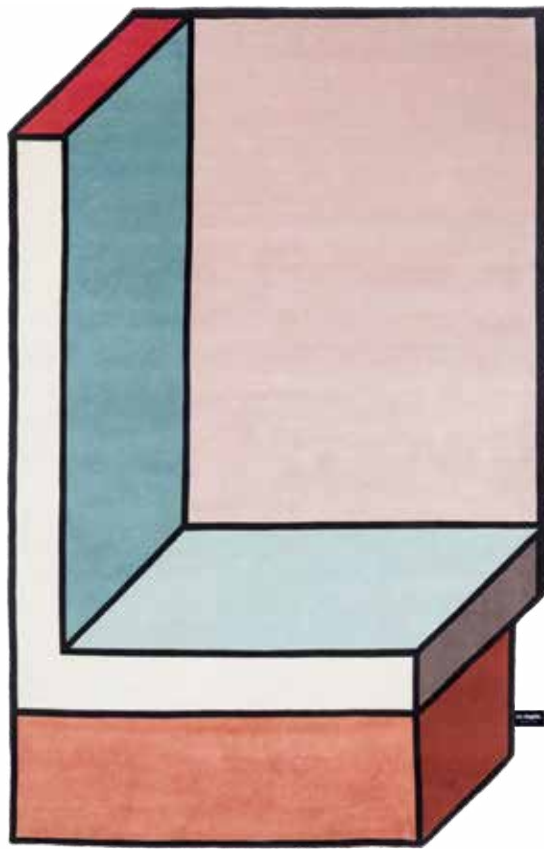
Each rug bears the signature and the identity of an independent designer, bold and creatively diverse rugs.



VISIONI A SOIE

SC.VAS19.S80.-

designed by Patricia Urquiola



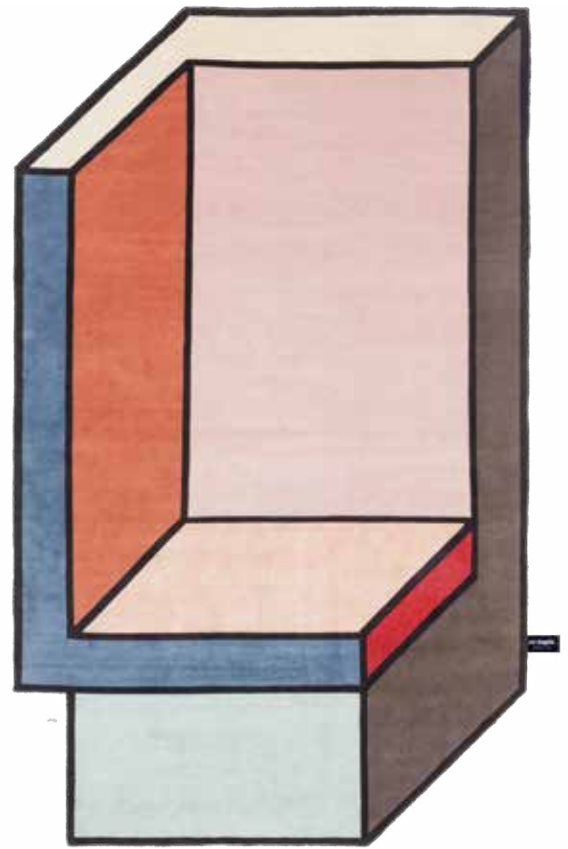
weave: cotton
knot: himalayan wool and silk
quality: A (125.000 knots/sqm approx.)



VISIONI B SOIE

SC.VBS19.S80.-

designed by Patricia Urquiola



weave: cotton
knot: himalayan wool and silk
quality: A (125.000 knots/sqm approx.)



VISIONI

SIGNATURE COLLECTION

designed by Patricia Urquiola

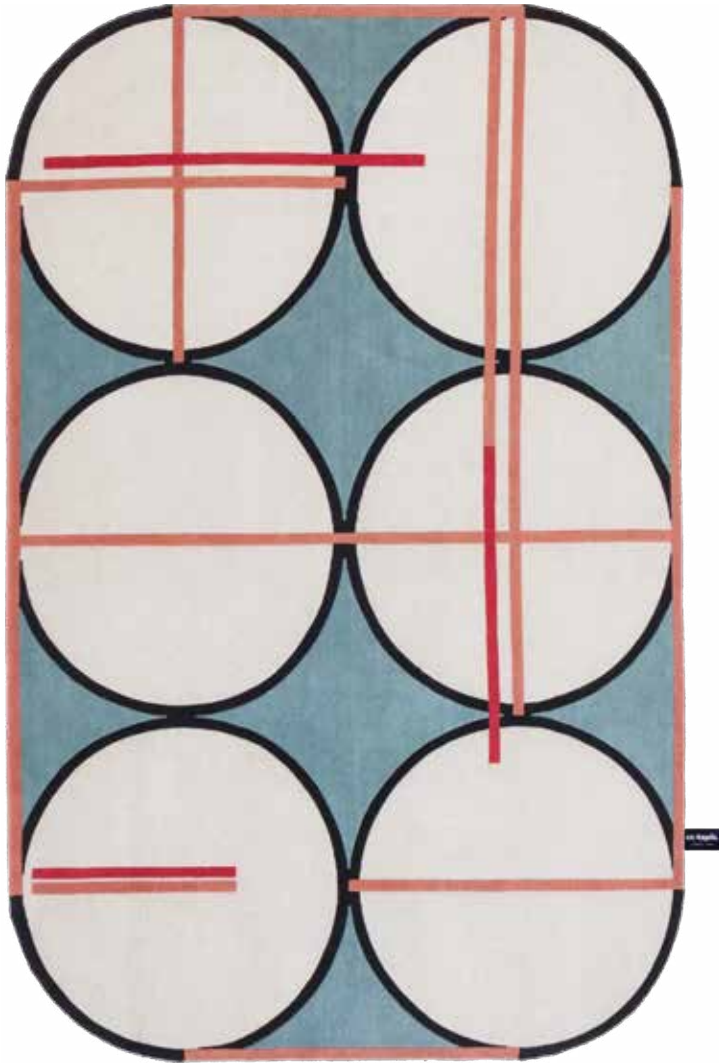


Two rugs that testify to the desire to give value to ancient production techniques adding a contemporary breath to them.

CREDENZA SOIE

SC.CRE19.100.-

designed by Patricia Urquiola and Federico Pepe



see more colors on pag. 185

weave: cotton
 knot: himalayan wool and silk
 quality: A+ (152.000 knots/sqm approx.)



PATRICIA URQUIOLA AND FEDERICO PEPE



CREDENZA

SIGNATURE COLLECTION

designed by Patricia Urquiola and Federico Pepe



Credenza is a project by Patricia Urquiola and Federico Pepe for cc-tapis and Spazio Pontaccio. The collection was inspired by traditional stained-glass windows of churches and it also means "belief" in Italian.

QUADRO CELESTE
SIGNATURE COLLECTION
designed by Studiopepe.



The use of the color becomes the contemporary
break for a geometry dominated by shades of wool
and natural shades.

QUADRO CELESTE #1

SC.QUB19.60.SC

designed by Studiopepe.

weave: cotton
knot: himalayan wool
quality: B (89.000 knots/sqm approx.)



QUADRO CELESTE #1



see more colors on pag. 188



QUADRO CELESTE #1105

SC.QUA19.OLDIE.OC

designed by Studiopepe.



weave: cotton
knot: himalayan wool
quality: OLDIE

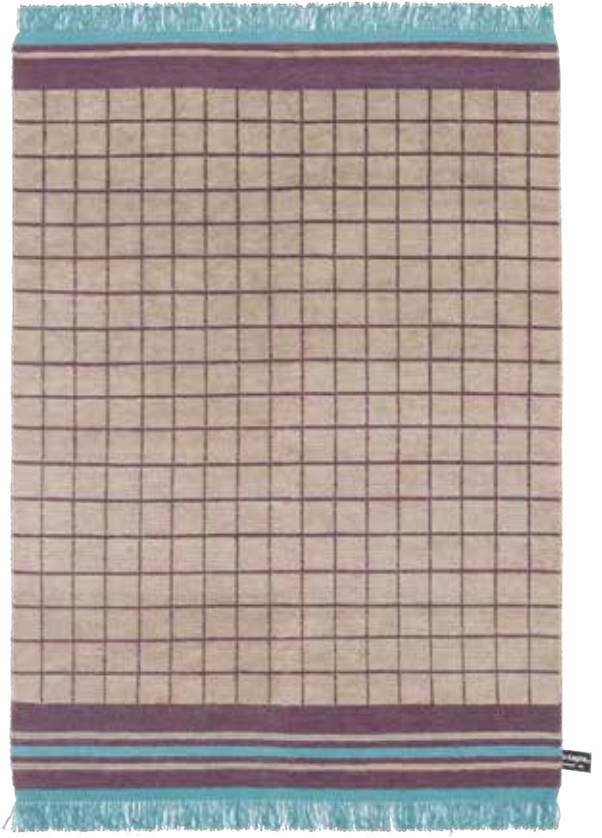


see more colors on pag. 188

QUADRO CELESTE #1105

SC.QUA21.OLDIE.OC

designed by Studiopepe.



weave: cotton
knot: himalayan wool
quality: OLDIE





QUADRO CELESTE #34

SC.QUC20.S80.SC

designed by Studiopepe.



weave: cotton
knot: himalayan wool
quality: A (125.000 knots/sqm approx.)

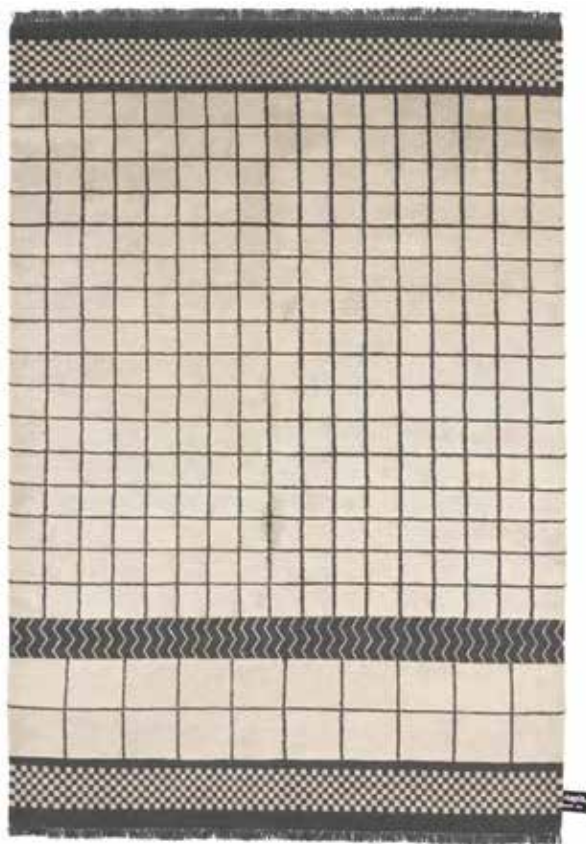


see more colors on pag. 188

QUADRO CELESTE #260

SC.QUD19.S80.SC

designed by Studiopepe.



weave: cotton
knot: himalayan wool
quality: A (125.000 knots/sqm approx.)



QUADRO CELESTE #65

SC.WAH.OLDIE.C

designed by Studiopepe.



weave: cotton
knot: himalayan wool
quality: OLDIE



QUADRO CELESTE #175

SC.WAH.OLDIE.C

designed by Studiopepe.



weave: cotton
knot: himalayan wool
quality: OLDIE



QUADRO CELESTE #671

SC.WAH.OLDIE.C

designed by Studiopepe.



weave: cotton
knot: himalayan wool
quality: OLDIE



QUADRO CELESTE #1372

SC.WAH.OLDIE.C

designed by Studiopepe.



weave: cotton
knot: himalayan wool
quality: OLDIE



CHECK 5

SIGNATURE COLLECTION

designed by Ludovica + Roberto Palomba



CHECK 05 is the digital implementation of traditional decor which is broken-down into pixels.

CHECK 5

SC.CHE19.DURRIES.-

designed by Ludovica + Roberto Palomba

weave: cotton
 knot: himalayan wool
 quality: DURRIES



CHECK 4



The initial design loses its form to become an abstract image. Developing this approach the result becomes more and more abstract.

GIUDECCA

SIGNATURE COLLECTION

designed by Zanellato/Bortotto



Giudecca is a part of the Acqua Alta collection for Rubelli.

Inspired by a venetian flight of stairs, the idea came to reinterpret the iconic design of the steps covered by the lagoon.

GIUDECCA

SC.GIU19.100.-

designed by Zanellato/Bortotto

weave: cotton
 knot: himalayan wool and silk
 quality: A+ (152.000 knots/sqm approx.)

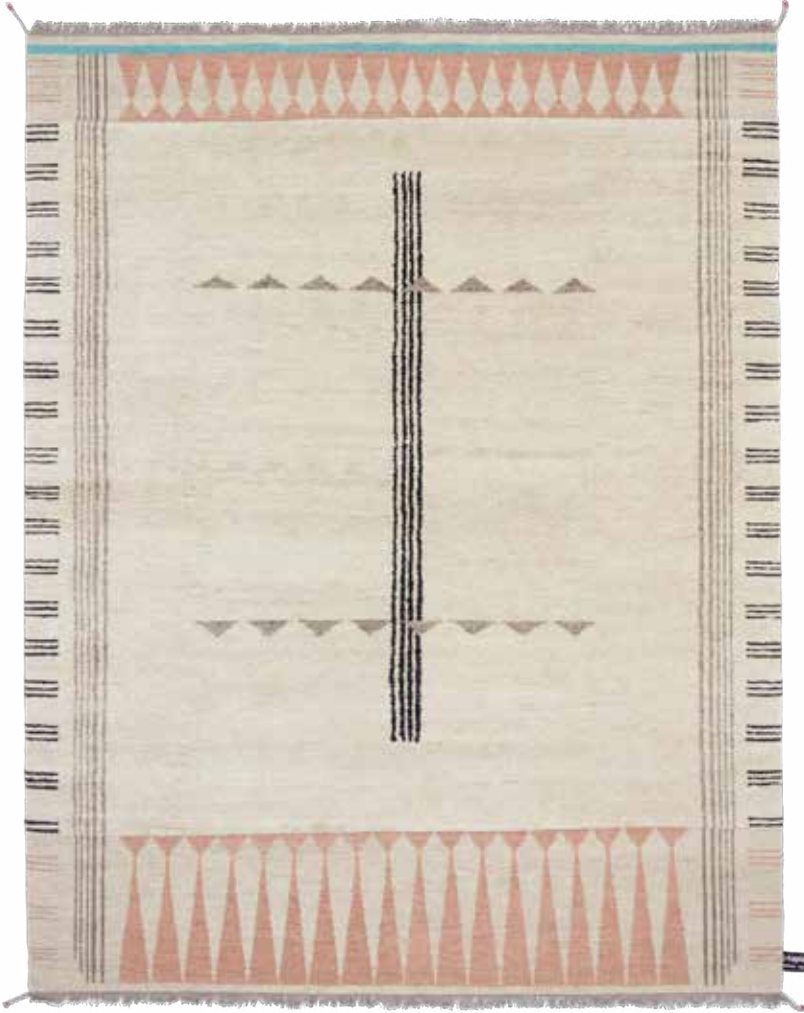


Different tones of grey which have been knotted in Himalayan wool create the stone steps, marked by salt and the effects of time. The sea and the vibrations of the waves are transformed into a shimmering silk surface where tones of blue and green radiate together. Venice and its magical atmosphere are transformed in a new contemporary vision through a rug completely knotted by hand.

PRIMITIVE WEAVE 1 CIPRIA

SC.PWA20.60.SC

designed by Chiara Andreatti



weave: cotton
knot: himalayan wool
quality: B (89.000 knots/sqm approx.)



see more colors on pag. 191



PRIMITIVE WEAVE 2 STANDARD

SC.PWB19.60.SC

designed by Chiara Andreatti

weave: cotton
knot: himalayan wool
quality: B (89.000 knots/sqm approx.)



see more colors on pag. 191





PRIMITIVE WEAVE 4 RUST

SC.PWD20.60.SC

designed by Chiara Andreatti



weave: cotton
knot: himalayan wool
quality: B (89.000 knots/sqm approx.)



see more colors on pag. 191

PRIMITIVE WEAVE 3 STANDARD

SC.PWC19.60.SC

designed by Chiara Andreatti



weave: cotton
knot: himalayan wool
quality: B (89.000 knots/sqm approx.)



see more colors on pag. 191

PRIMITIVE WEAVE
SIGNATURE COLLECTION
designed by Chiara Andreatti



A collection inspired by Moroccan Berber rugs, infused with Viennese geometric graphics from the 20th century. Rugs with a mixture of Nepalese flatweave and diverse pile heights, the effortless combination of cultures and knotting techniques make these rugs rich in texture and aesthetics.

SACHA
SIGNATURE COLLECTION
designed by Nelly Maye



Inspired by Rothko, overlays of color and contrast give depth and intensity to the rug. The choice of the line, which is sometimes clear or sometimes faded brings vibration and movement, utilising the energy of handknotting and the expertise of the artisan.



SACHA RUST

SACHA PURPLE

SC.NET32.100.-

designed by Nelly Maye

SACHA BLACK/WHITE

SC.NET19.100.-

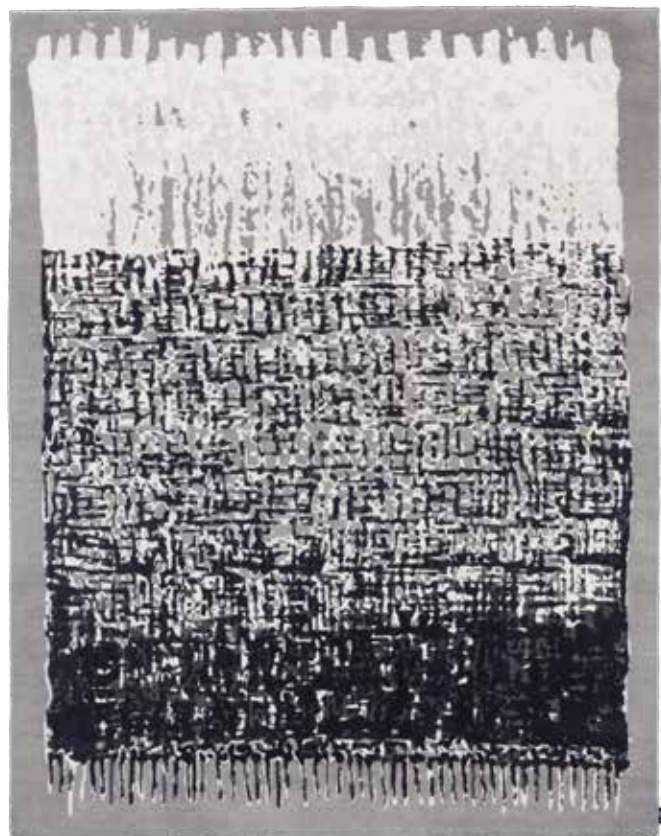
designed by Nelly Maye



weave: cotton
 knot: himalayan wool and silk
 quality: A+ (152.000 knots/sqm approx.)



see more colors on pag. 192



weave: cotton
 knot: himalayan wool and silk
 quality: A+ (152.000 knots/sqm approx.)



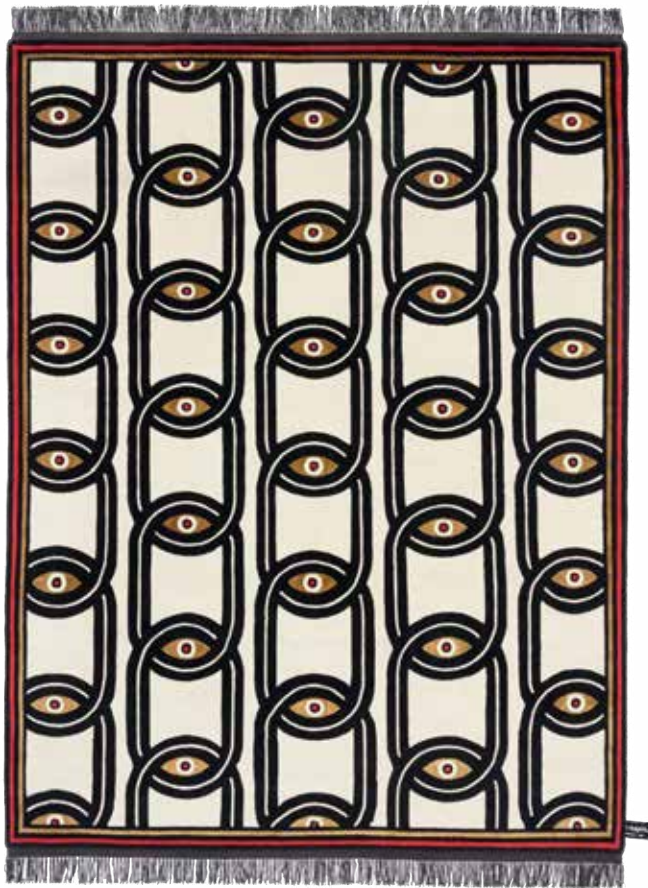


photo by Studio_Erick_Saillet

EYES IN CHAINS

SC.PEA19.100.KC

designed by Federico Pepe



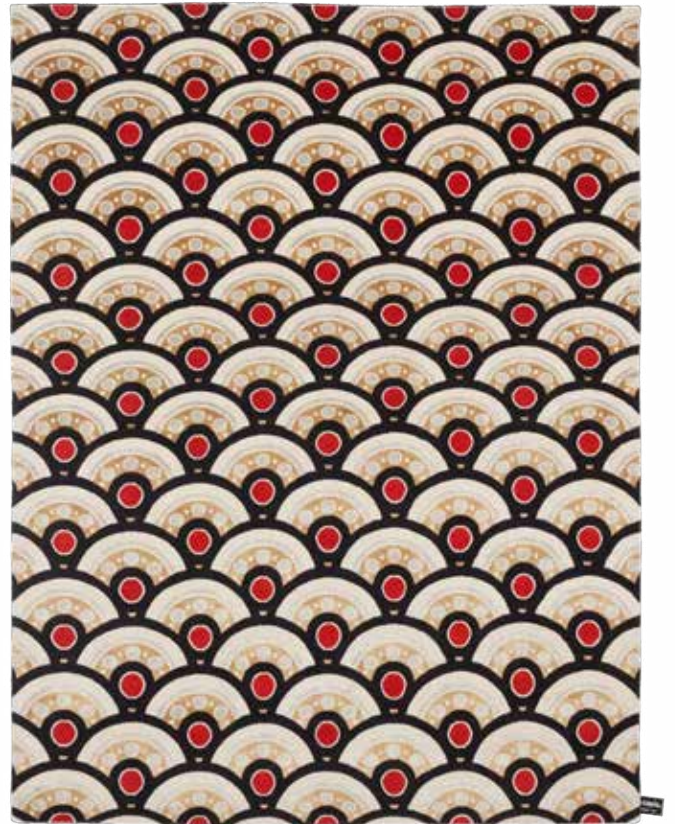
weave: cotton
 knot: himalayan wool and silk
 quality: A+ (152.000 knots/sqm approx.)



PILGRIMAGE IN TOKYO

SC.PEB19.100.-

designed by Federico Pepe



weave: cotton
 knot: himalayan wool and silk
 quality: A+ (152.000 knots/sqm approx.)



EYES IN CHAINS
SIGNATURE COLLECTION
designed by Federico Pepe



Part of the Spazio Pontaccio collection, these strong and contemporary rugs have been designed by Federico Pepe, *Le Dictateur*, who reinterprets classic subjects and have been reworked with new colours in Himalayan wool and pure silk.

IN THE WOODS
SIGNATURE COLLECTION
designed by Claudio Bonoldi



Inspired by nature, the 'In The Woods' rug uses only natural undyed materials such as Himalayan wool, silk, hemp and nettle fibres that all together create a mixture of soft, smooth and rough textures. Beautiful, natural and stimulating to the touch.

IN THE WOODS

SC.ITW19.100.-

designed by Claudio Bonoldi



weave: cotton
 knot: himalayan wool, silk and hemp
 quality: A+ (152.000 knots/sqm approx.)



IN THE WOODS 2.0

SC.ITT19.100.SC

designed by Claudio Bonoldi



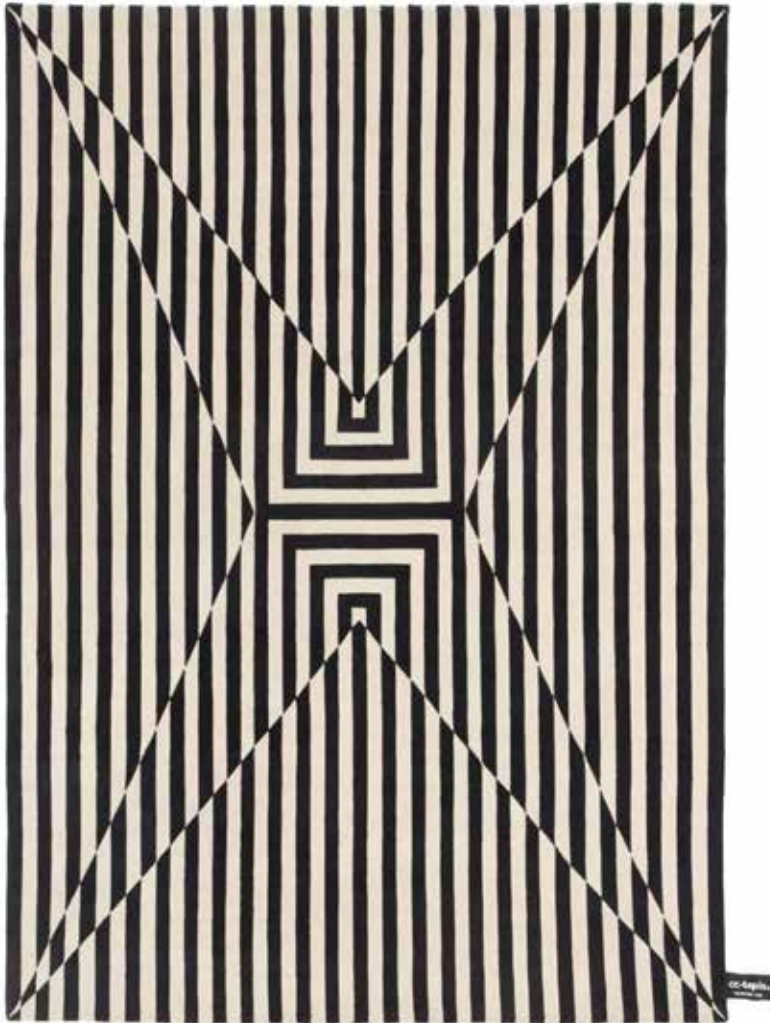
weave: cotton
 knot: himalayan wool, silk and hemp
 quality: A+ (152.000 knots/sqm approx.)



OPSTAR

SC.VMS20.S80.-

designed by Vincenzo Marsiglia



weave: cotton
knot: himalayan wool
quality: A (125.000 knots/sqm approx.)

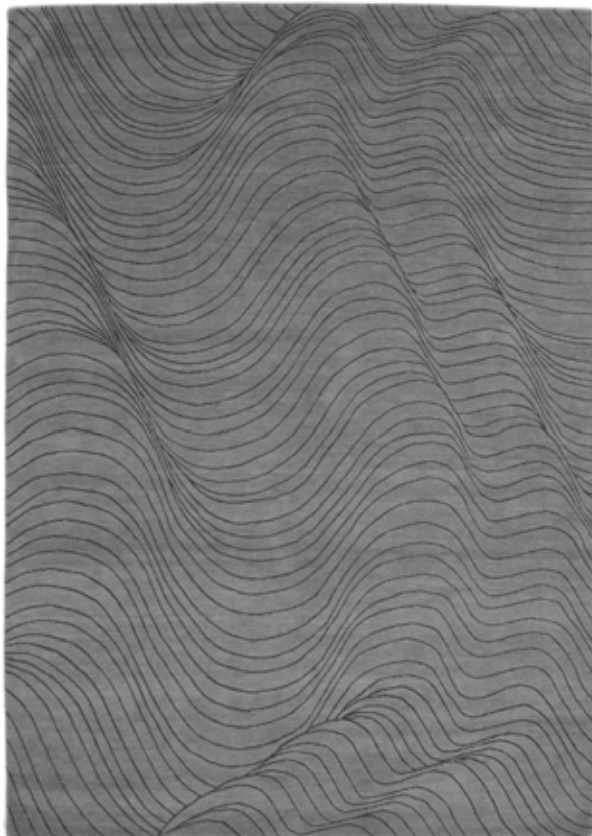




SKIN

SC.SKN19.100.-

designed by Kostantia Manthou



weave: cotton
 knot: himalayan wool
 quality: A+ (152.000 knots/sqm approx.)



see more colors on pag. 187

BAYOU

SC.BAY19.100.SC

designed by Serena Confalonieri



weave: cotton
 knot: himalayan wool
 quality: A+ (152.000 knots/sqm approx.)





CROSS (ME) KNOT "C"

CROSS (ME) KNOT "A"

SC.CKA19.150.-

designed by CTRLZAK



weave: cotton
 knot: himalayan wool and silk
 A++/A (232.000/125.000 knots/sqm approx.)



CROSS (ME) KNOT "B"

SC.CKB19.150.-

designed by CTRLZAK



weave: cotton
 knot: himalayan wool and silk
 A++/A (232.000/125.000 knots/sqm approx.)



CROSS (ME) KNOT
SIGNATURE COLLECTION
designed by CTRL ZAK



Cross(me)Knot combines traditional Tibetan and Nepalese designs with typical European motifs. After meticulous research into carpet weaving techniques in both European and Aisian cultures, CTRLZAK's collection of hybrid carpets unites traditions, both visually and technically, forming new and unique pieces.

BIRTH ON THE DANCEFLOOR
SC.MDR19.150.PS



DEATH ON THE DANCEFLOOR
SC.DTD19.150.PS



SOUL ON THE DANCEFLOOR
SC.HOD19.150.PS



designed by Marta Bagante

weave: cotton

knot: himalayan wool and silk

quality: A++ (232.000 knots/sqm approx.)



120 x 135 cm ~



LANOLIN

65 x 145 cm ~



65 x 145 cm ~



65 x 155 cm ~



designed by Daniele Lora

weave: cotton

knot: raw himalayan wool

quality: HANDWOVEN





CONTEMPORARY COLLECTION

Exploring patterns and geometry from the history of interior design,
timeless and bold rugs suitable for any space.

RAZOR
CONTEMPORARY COLLECTION



Inspired by the razzle dazzle camouflage of the English Navy and 80's primary chromatic color combinations. Utilizing a special twist-knot giving the rug soft and non-uniform colors.

RAZOR

CC.RAZ19.S80.SC

weave: cotton
knot: himalayan wool and silk
quality: A (125.000 knots/sqm approx.)



DIAMOND SOIE
CONTEMPORARY COLLECTION



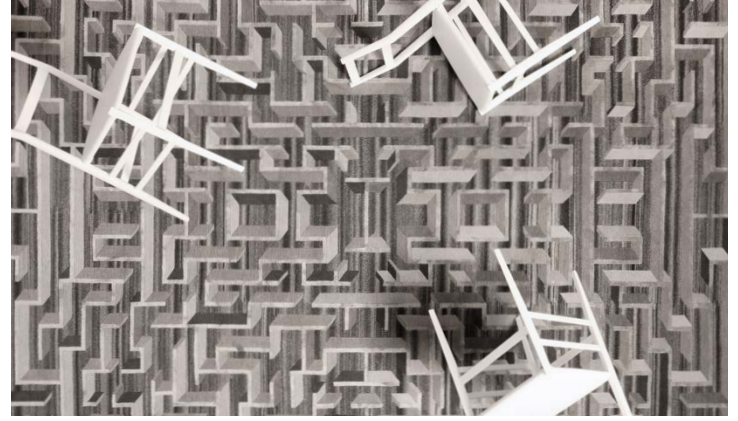
DIAMOND SOIE TUNDRA

CC.DMS23.100.SC

weave: cotton
knot: himalayan wool
quality: A+ (152.000 knots/sqm approx.)



see more colors on pag. 196



LOST IN THE FIFTIES SOIE FADED
CC.LAS20.100.-



weave: cotton
knot: himalayan wool and silk
quality: A+ (152.000 knots/sqm approx.)



see more colors on pag. 199

LOST IN THE FIFTIES SOIE LIGHT SLEEK
CC.LAS4.100.SC



weave: cotton
knot: himalayan wool and silk
quality: A+ (152.000 knots/sqm approx.)



INFINI TUNDRA

CC.INF23.S80.-

weave: cotton
knot: himalayan wool
quality: A (125.000 knots/sqm approx.)



see more colors on pag. 197



MESH ICE

CC.MSH21.100.SC



weave: cotton
 knot: himalayan wool and silk
 quality: A+ (152.000 knots/sqm approx.)



see more colors on pag. 200

INFINI STUCCO SOIE ICE

CC.ISS21.100.-



weave: cotton
 knot: himalayan wool and silk
 quality: A+ (152.000 knots/sqm approx.)

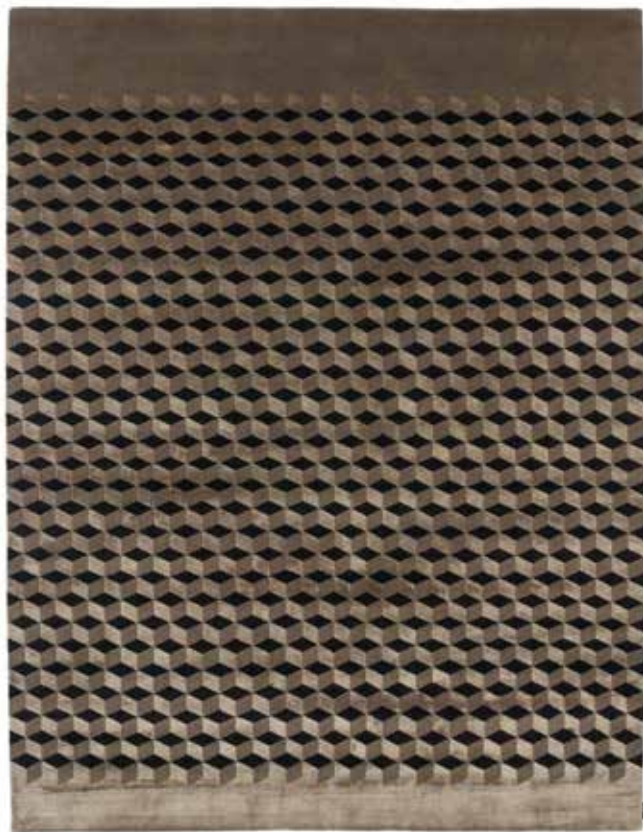


see more colors on pag. 198



MINI INFINI SOIE FULL ICE
CC. IMS21.S80.-

MINI INFINI SOIE FULL BRONZE
CC. IMS22.S80.-



weave: cotton
knot: himalayan wool and silk
quality: A (125.000 knots/sqm approx.)



see more colors on pag. 202

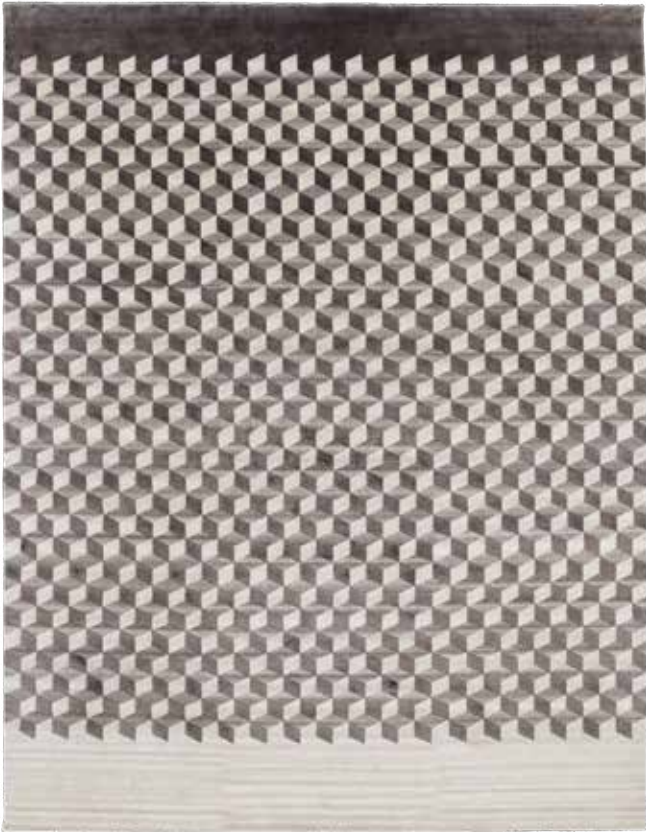
weave: cotton
knot: himalayan wool and silk
quality: A (125.000 knots/sqm approx.)





MINI INFINI SOIE SLEEK

CC.IMS3.S80.-



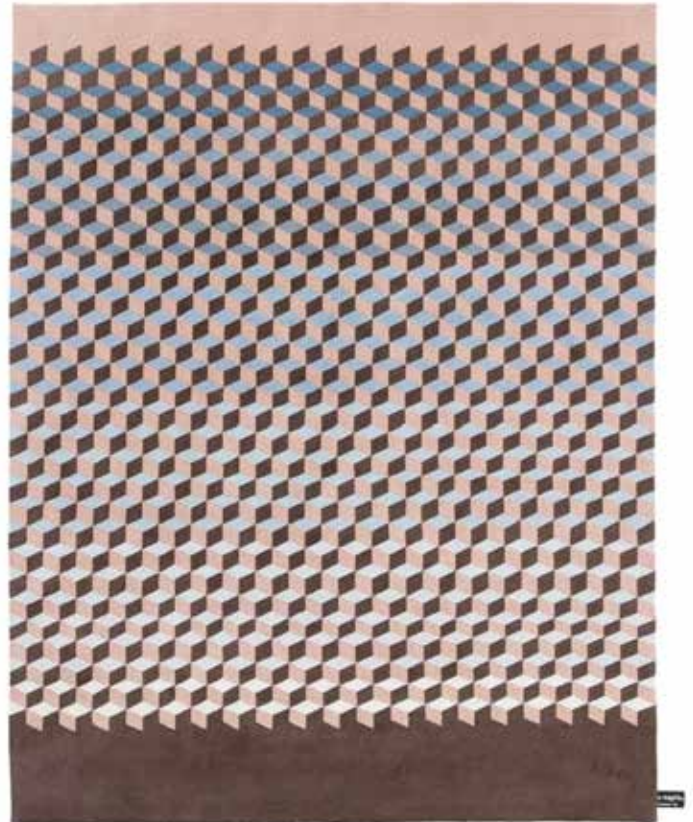
weave: cotton
knot: himalayan wool and silk
quality: A (125.000 knots/sqm approx.)



see more colors on pag. 202

MINI INFINI CIPRIA

CC.IMI20.S80.-



weave: cotton
knot: himalayan wool
quality: A (125.000 knots/sqm approx.)



see more colors on pag. 201

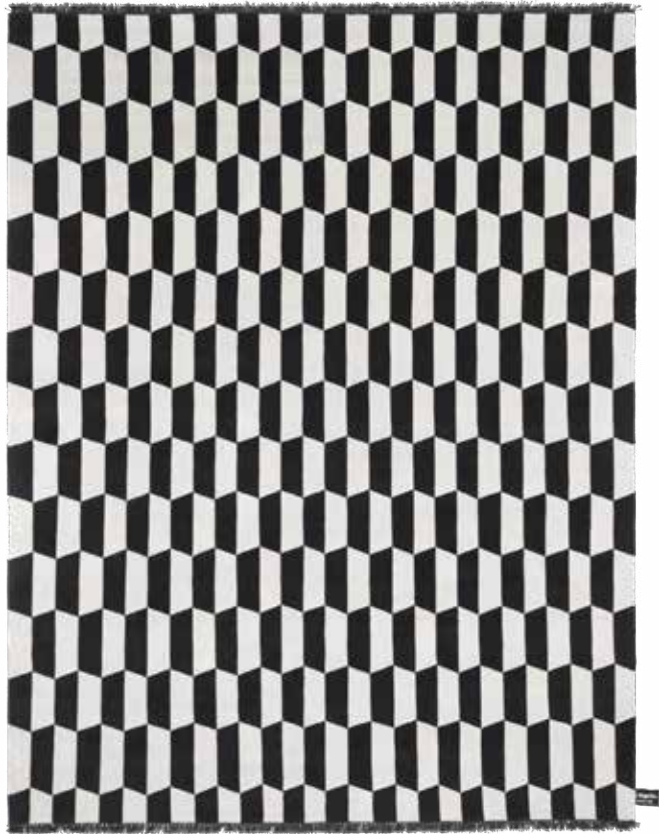
MINI INFINI
CONTEMPORARY COLLECTION



Inspired by paving stones in the historic city of Pompeii. The Mini Infini is a geometric texture which is strong and eclectic that has been continuously reinterpreted throughout the history of interior design and architecture. A timeless design with a strong personality.



P.A.N.E.
CC.ESA19.S80.SC



weave: cotton
knot: himalayan wool
quality: A (125.000 knots/sqm approx.)



P.A.N.E. SOIE BRONZE
CC.ESS22.S80.-



weave: cotton
knot: himalayan wool and silk
quality: A (125.000 knots/sqm approx.)





MAZE
CC.MAZ19.S80.-



weave: cotton
knot: himalayan wool
quality: A (125.000 knots/sqm approx.)



MAZE SOIE BRONZE
CC.MAS22.S80.SC

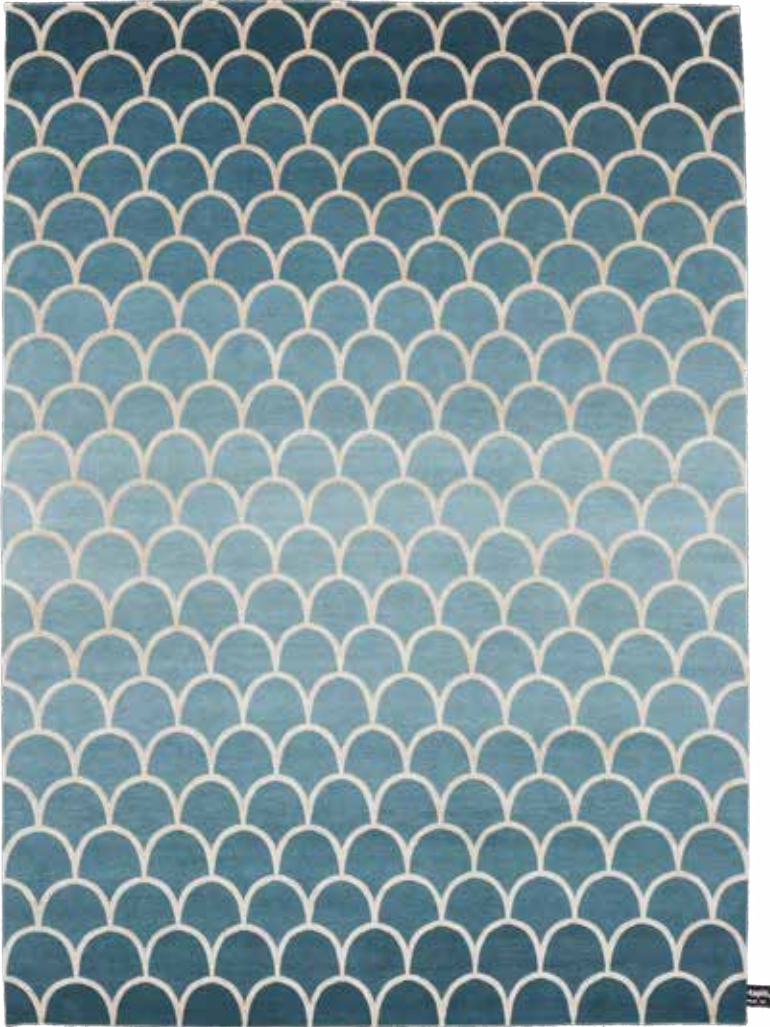


weave: cotton
knot: himalayan wool and silk
quality: A (125.000 knots/sqm approx.)



EAILLES DEGRADÉ 2.0 TEAL

CC.ECT19.S80.-



weave: cotton

knot: himalayan wool and silk

quality: A (125.000 knots/sqm approx.)



COATES PLACE

CC.TRG1.100.KC

weave: cotton
knot: himalayan wool, silk and aloe
quality: A+ (152.000 knots/sqm approx.)





DAMIER 2.0 DARK ICE
CC.DAT21.S80.-



weave: cotton
knot: dark undyed himalayan wool and silk
quality: A (125.000 knots/sqm approx.)



see more colors on pag. 195

DAMIER 2.0 LIGHT SLEEK
CC.DAT4.S80.-



weave: cotton
knot: dark undyed himalayan wool and silk
quality: A (125.000 knots/sqm approx.)



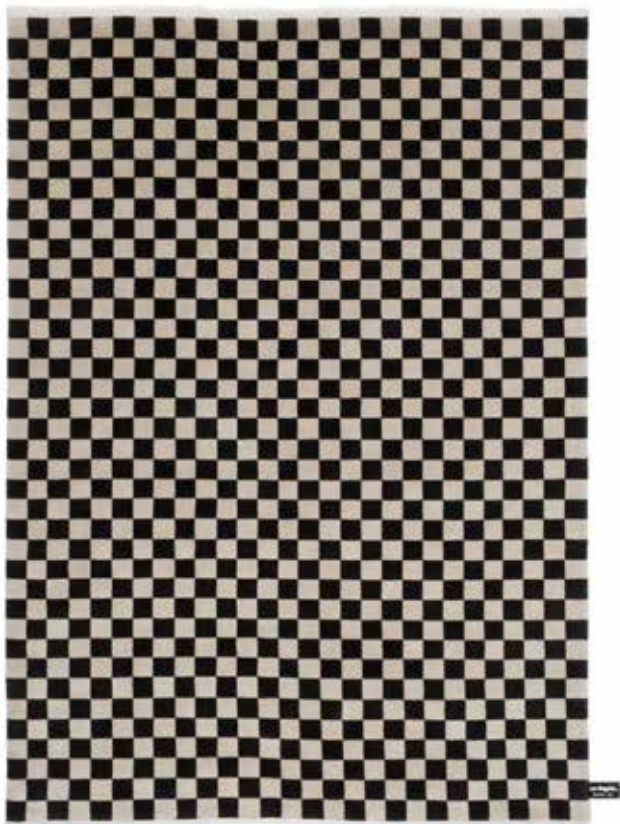


DAMIER

CC.DAM19.S80.SC

NCFC

CC.NCF19.S80.SC



weave: cotton
 knot: himalayan wool
 quality: A (125.000 knots/sqm approx.)



weave: cotton
 knot: himalayan wool
 quality: A (125.000 knots/sqm approx.)



MID-MOD BRONZE

CC.GI022.100.SC



weave: cotton
knot: himalayan wool and silk
quality: A+ (152.000 knots/sqm approx.)



Inspired by ancient geometric motifs, the mixture of Himalayan wool and silk gives new life to warm and luxurious bronze tones.

see more colors on pag. 201



STELLA PETROL

CC.ROM17.S80.-

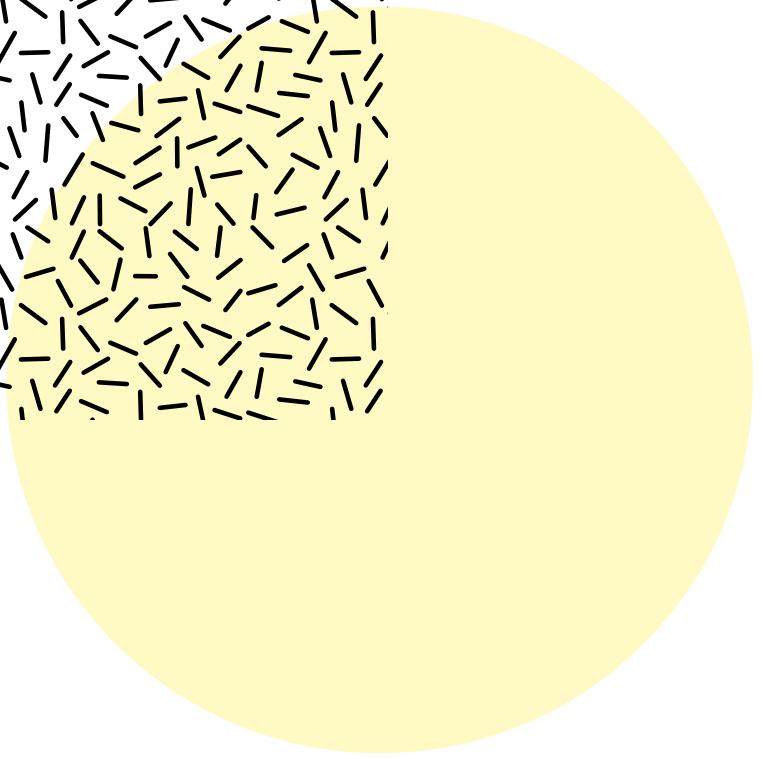
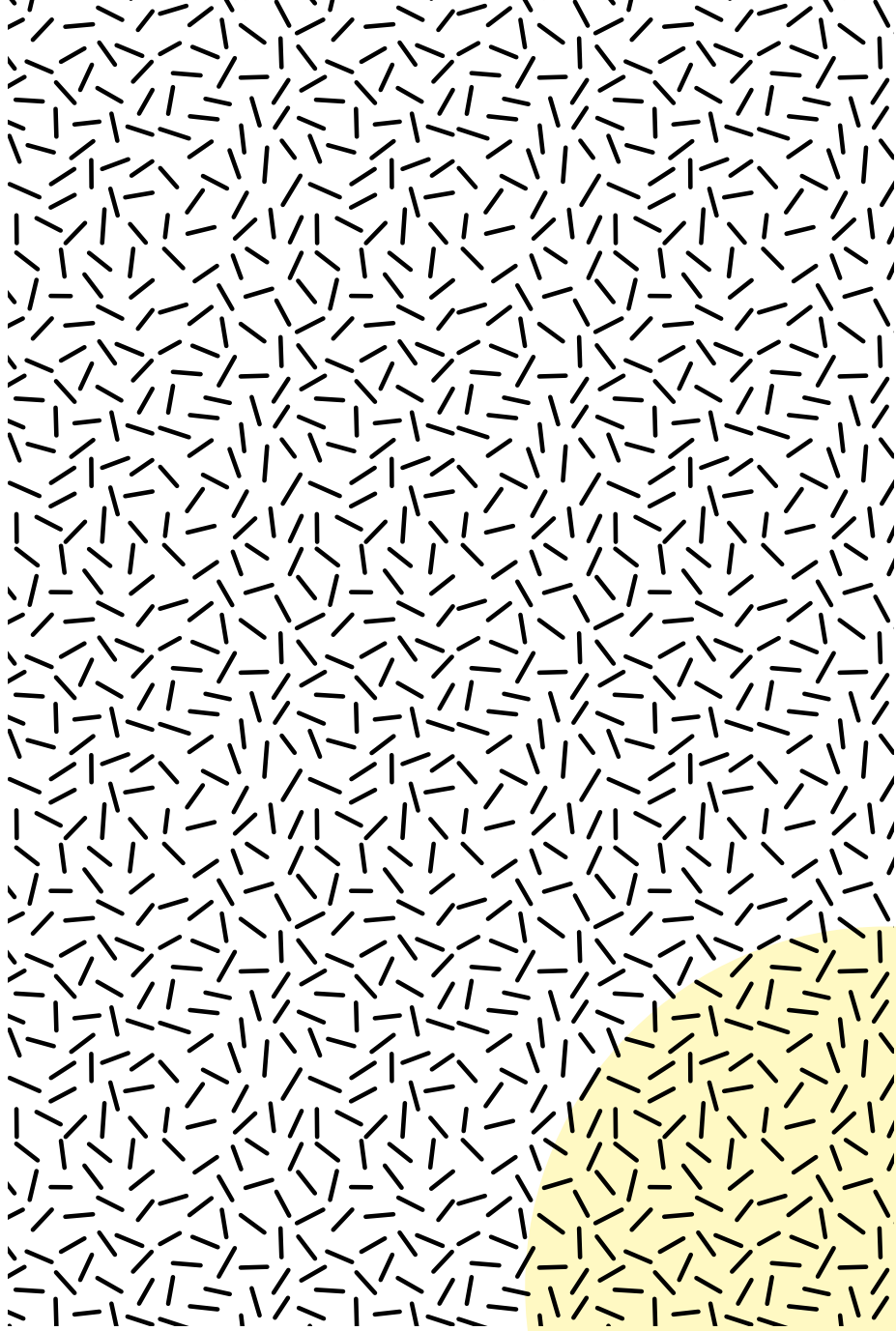
designed by Serena Confalonieri

weave: cotton
 knot: himalayan wool and aloe
 quality: A (125.000 knots/sqm approx.)



STELLA COPPER





OLDIE COLLECTION

Don't be fooled by the name, the Oldie rugs are anything but old.
A new knotting technique developed by cc-tapis creates the
collection's beautiful vintage feel without using any chemical or
acid washes.

OLDIE SOIE ICE (D-005)
OC.SS021.OLDIE.OC



weave: cotton
knot: himalayan wool and silk
quality: OLDIE



OLDIE SOIE SLEEK (AE-07, AE-09)
OC.SS04.OLDIE.OC



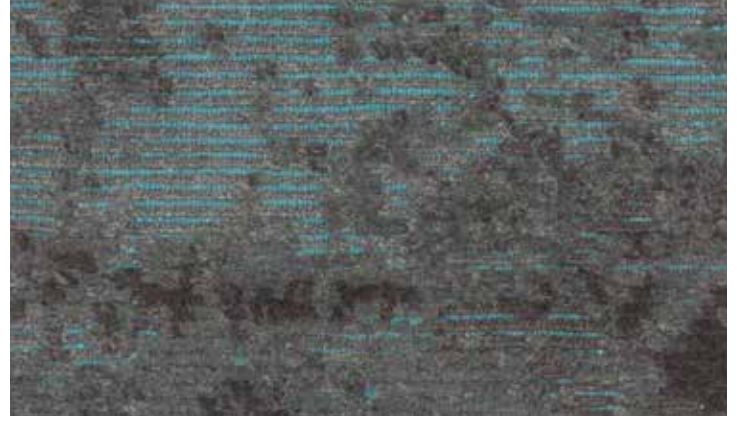
weave: cotton
knot: himalayan wool and silk
quality: OLDIE



OLDIE SOIE
OLDIE COLLECTION



Thick and textured strands of Himalayan wool and silk
are used to create the pile of the rug, creating a
luxurious and beautiful shine.



OLDIE FULL BLACK PETROL (CG-04)

OLDIE FULL BLACK CIPRIA (EJ-09)
OC.FUL19.OLDIE.OC



weave: cotton
knot: himalayan wool
quality: OLDIE



see more colors on pag. 211

OLDIE FULL BLACK TAUPE (AE-05)
OC.FUL19.OLDIE.OC



weave: cotton
knot: himalayan wool
quality: OLDIE



OLDIE FULL
OLDIE COLLECTION



The Oldie FULL uses completely dyed Himalayan wool and staying true to the collection the cotton weave of the rug is dyed creating the colorful and subtle highlight. We can dye the wool in any color of your choice.

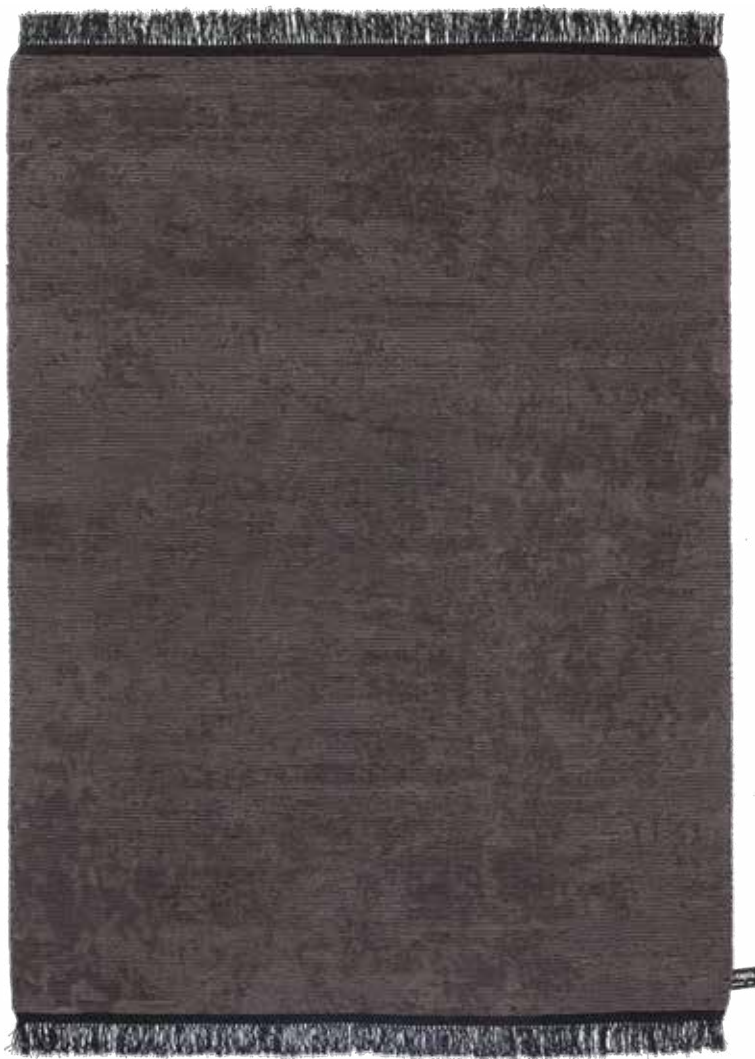
OLDIE FULL PIOMBO
OLDIE COLLECTION



Simple in design, effortless in
customization and rich in materials.

OLDIE FULL PIOMBO (BT-01)
OC.FUL20.OLDIE.OC

weave: cotton
knot: himalayan wool
quality: OLDIE



OLDIE FULL PIOMBO (AJ-01, EJ-03)



see more colors on pag. 212

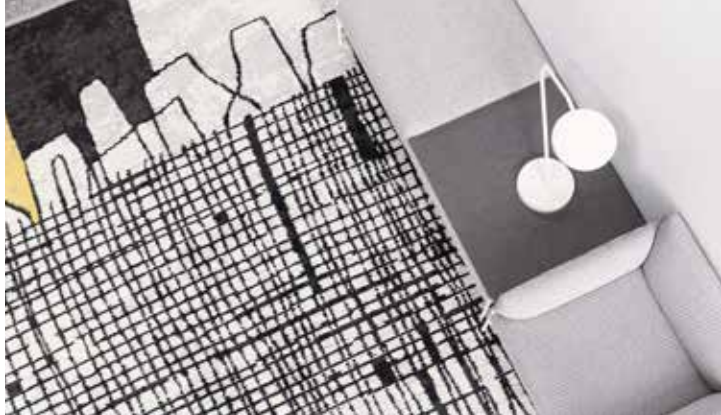
SEGNI MINIMI

OLDIE COLLECTION

designed by Giuseppe Di Costanzo

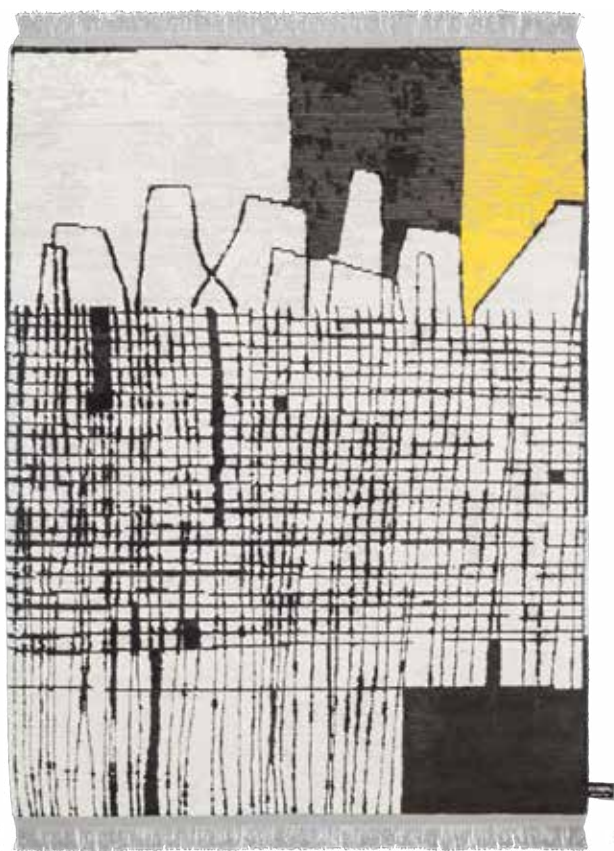


Segni Minimi, which translated means "simple marks", is a collection of drawings on paper. Essential, abstract and geometric designs where lines, figures and fields of color overlay each other.



SEGNI MINIMI YELLOW
OC.SEM20.OLDIE.OC

designed by Giuseppe Di Costanzo



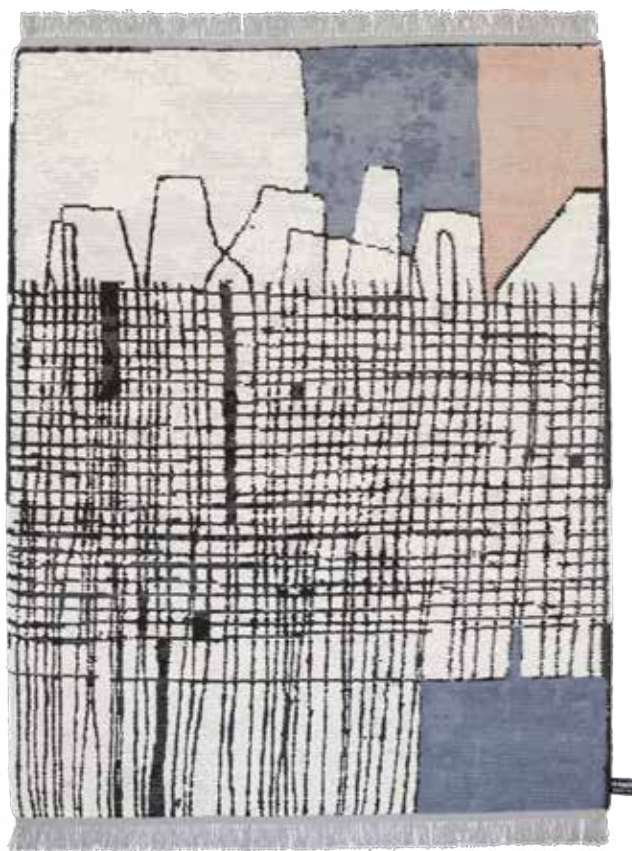
weave: cotton
knot: himalayan wool
quality: OLDIE



see more colors on pag. 213

SEGNI MINIMI CIPRIA
OC.SEM28.OLDIE.OC

designed by Giuseppe Di Costanzo



weave: cotton
knot: himalayan wool
quality: OLDIE



OLDIE DARK
OLDIE COLLECTION



The color of the dyed cotton weave creates the colorful fringes whilst giving a subtle highlight of color in the rug which is difused by the undyed Himalayan wool. Absolutely no chemical or acid washes are used to create the Oldie vintage feel.

OLDIE DARK ORANGE (DK-01)
OC.STD2.OLDIE.OC

weave: cotton
knot: himalayan wool
quality: OLDIE



OLDIE DARK MINT (CH-09)



see more colors on pag. 210



OLDIE LIGHT VIOLET (ES-05)
OC.STD1.OLDIE.OC



weave: cotton
knot: himalayan wool
quality: OLDIE



see more colors on pag. 208

OLDIE LIGHT BLACK (BT-01)
OC.STD1.OLDIE.OC



weave: cotton
knot: himalayan wool
quality: OLDIE



NOMAD 2.0 LIGHT

OC.NOM20.OLDIE.OC



weave: cotton
knot: himalayan wool
quality: OLDIE



see more colors on pag. 206



OLDIE ELEMENT CUBO SAGE

OLDIE ELEMENT CUBO BLUE SKY
OC.ELC21.OLDIE.OC



weave: cotton
knot: himalayan wool
quality: OLDIE



see more colors on pag. 208

OLDIE ELEMENT CUBO CIPRIA
OC.ELC28.OLDIE.OC



weave: cotton
knot: himalayan wool
quality: OLDIE





OLDIE ELEMENT YELLOW (DI-08)
OC.ELE1.OLDIE.OC



weave: cotton
knot: himalayan wool
quality: OLDIE



see more colors on pag. 207

OLDIE ELEMENT MINT (CH-09)
OC.ELE1.OLDIE.OC



weave: cotton
knot: himalayan wool
quality: OLDIE



OLDIE BERBER TV STANDARD
OC.BER20.OLDIE.OC

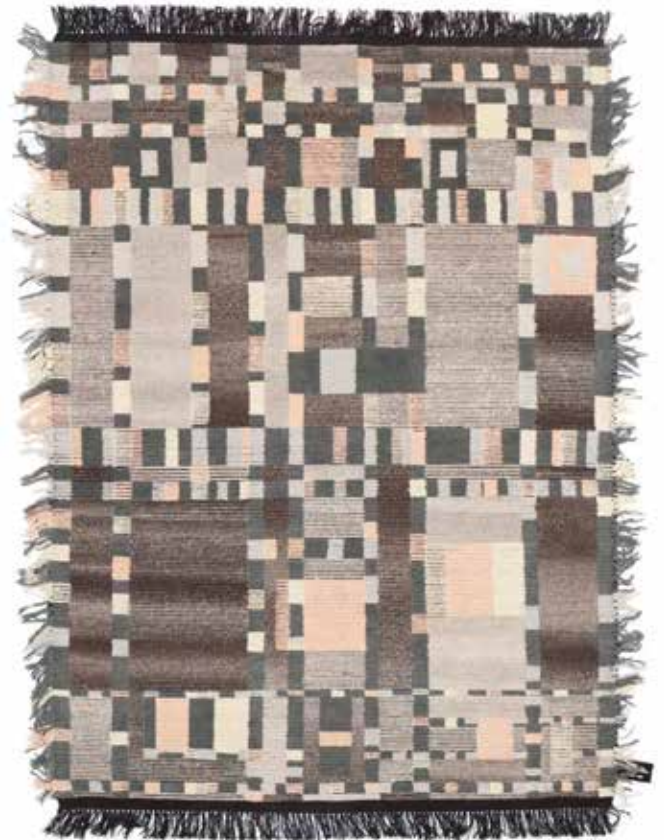


weave: cotton
knot: himalayan wool
quality: OLDIE



see more colors on pag. 206

OLDIE BERBER TV PEACH
OC.BERX1.OLDIE.OC



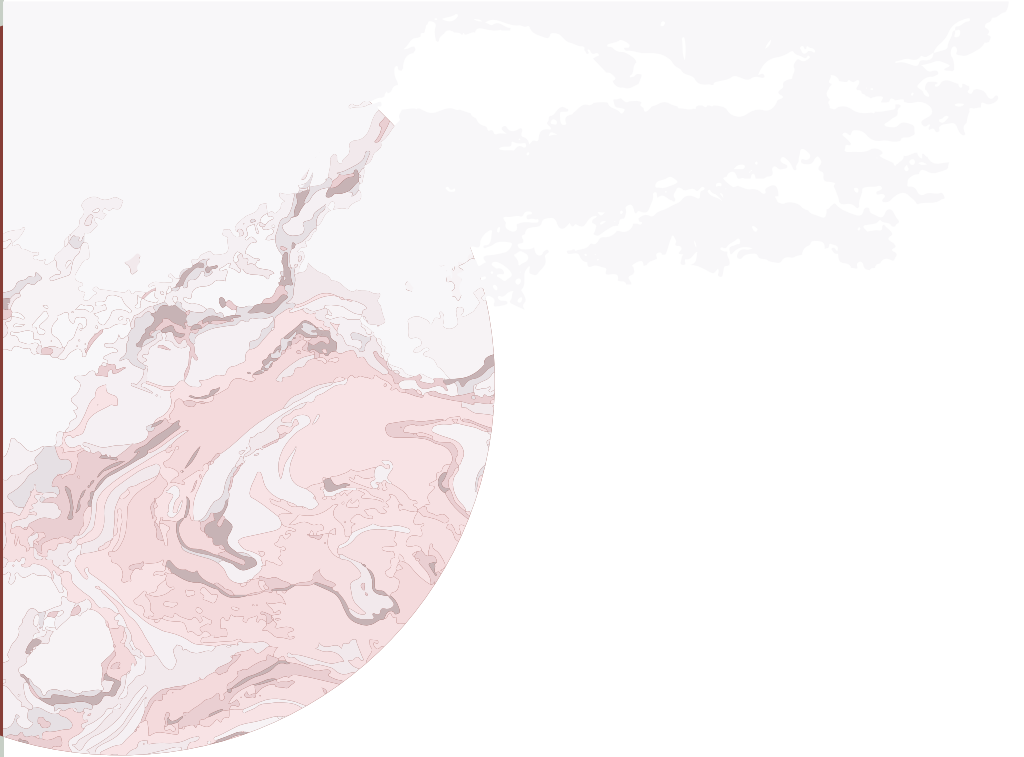
weave: cotton
knot: himalayan wool
quality: OLDIE



OLDIE BERBER TV
OLDIE COLLECTION



The oldie berber TV is a fresh addition to the collection, with a combination of light, medium and dark undyed himalayan wool with soft pastel colors which soften the rigorous geometric design.



TRACES DE MEMOIRE COLLECTION

A contemporary touch is given to traditional motifs that play on the contrast between soft and bold, clear and faded.

TRACES D'ORIENT

TC.ORI19.100.-



weave: cotton

knot: himalayan wool and silk

quality: A+ (152.000 knots/sqm approx.)



TRACES D'ORIENT
TRACES DE MEMOIRE COLLECTION



TRACES D'AUBUSSON FULL
TRACES DE MEMOIRE COLLECTION



The Traces D'Aubusson in a fully dyed version. Roles are reversed as the classic design which is knotted in a blend of Himalayan wool and silk is highlighted by the light blue blackground.

TRACES D'AUBUSSON FULL BRONZE
TC.AUF22.100.KC



weave: cotton
knot: himalayan wool and silk
quality: A+ (152.000 knots/sqm approx.)



see more colors on pag. 216

TRACES D'AUBUSSON FULL ICE
TC.AUF21.100.SC



weave: cotton
knot: himalayan wool and silk
quality: A+ (152.000 knots/sqm approx.)



TRACES D'AUBUSSON LIGHT PETROL (CG-02)
TC.AUB18.100.PS



weave: cotton
knot: himalayan wool and silk
quality: A+ (152.000 knots/sqm approx.)



see more colors on pag. 214

TRACES D'AUBUSSON DARK BLACK (BT-01)
TC.AUB20.100.PS



weave: cotton
knot: himalayan wool and silk
quality: A+ (152.000 knots/sqm approx.)



TRACES D'AUBUSSON
TRACES DE MEMOIRE COLLECTION



Undyed himalayan wool is used as a background for the vibrant silk design.



TRACES DE KAZAK LIGHT PETROL (CG-02)
TC.EKZ18.100.PS

TRACES DE KAZAK DARK NAVY (BC-02)
TC.EKZ15.100.PS



weave: cotton
knot: himalayan wool and silk
quality: A+ (152.000 knots/sqm approx.)

weave: cotton
knot: himalayan wool and silk
quality: A+ (152.000 knots/sqm approx.)



see more colors on pag. 219



TRACES DE DAMASK LIGHT SLEEK (A-015)
TC.NDM4.100.PS

TRACES DE DAMASK DARK CAMO (B-021)
TC.NDM9.100.PS



weave: cotton
knot: himalayan wool and silk
quality: A+ (152.000 knots/sqm approx.)



see more colors on pag. 217

weave: cotton
knot: himalayan wool and silk
quality: A+ (152.000 knots/sqm approx.)



TRACES DE SAVONNERIE LIGHT CARAMEL (AH-02)
TC.SAV27.100.PS



weave: cotton
knot: himalayan wool and silk
quality: A+ (152.000 knots/sqm approx.)



see more colors on pag. 220

TRACES DE SAVONNERIE DARK SLEEK (AE-07)
TC.SAV3.100.PS



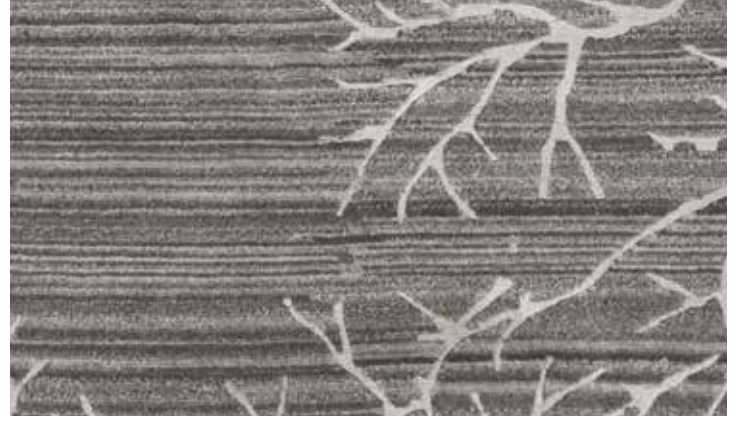
weave: cotton
knot: himalayan wool and silk
quality: A+ (152.000 knots/sqm approx.)



TRACES DE SAVONNERIE
TRACES DE MEMOIRE COLLECTION



The Traces De Savonnerie in rich and elegant caramel tones.
Fresh colors for contemporary interiors.



T.DOUBLE ARBRE DE VIE DARK COPPER (A-028)
TC.DAV7.S80.PS



weave: cotton
knot: himalayan wool and silk
quality: A (125.000 knots/sqm approx.)



TRACES DE FORÊT DARK SLEEK (AE-07)
TC.FOR3.S80.KC



weave: cotton
knot: himalayan wool and silk
quality: A (125.000 knots/sqm approx.)





TRACES DE JARDIN LIGHT SLEEK (AE-07)
TC.NJA4.100.PS



weave: cotton
knot: himalayan wool and silk
quality: A+ (152.000 knots/sqm approx.)



see more colors on pag. 218

TRACES DE JARDIN DARK COPPER (A-028)
TC.NJA7.100.PS



weave: cotton
knot: himalayan wool and silk
quality: A+ (152.000 knots/sqm approx.)





DIPPED COLLECTION

A collection based on research into material combinations, textures and color. Simple, minimal and yet highly complex.

DIPPED RIBBON CIPRIA
DC.DF019.100.SC



see more colors on pag. 225

weave: cotton
knot: himalayan wool, silk and aloe
quality: A+ (152.000 knots/sqm approx.)



DIPPED RIBBON
DIPPED COLLECTION



A collection which plays with the natural hues of undyed materials.
By mixing aloe, silk and himalayan wool together in different combinations and quantities, the rugs gain incredible textures, some soft and silky others rough and tactile. The natural material combinations absorb and reflect light differently creating rich natural tones giving depth to a minimal and contemporary design.

DIPPED FRAME
DIPPED COLLECTION



DIPPED FRAME FULL PETROL (D-117)

CC.DFR18.100.-

weave: cotton
knot: himalayan wool, silk and aloe
quality: A+ (152.000 knots/sqm approx.)



see more colors on pag. 223

DIPPED CUT FULL IVORY (A-060)

DC.DCU30.100.-



weave: cotton

knot: himalayan wool, silk and aloe

quality: A+ (152.000 knots/sqm approx.)



Through experimentation and research the dipped cut ivory was born. A rug which is completely monochromatic and whose color is given through the way its materials react under the same light.

see more colors on pag. 222

DIPPED CUT FULL (A-071)



DIPPED ORIGAMI CIPRIA
DC.DOR19.100.-



weave: cotton
knot: himalayan wool, silk and aloe
quality: A+ (152.000 knots/sqm approx.)



see more colors on pag. 224

DIPPED ORIGAMI ICE
DC.DOR21.100.-



weave: cotton
knot: himalayan wool, silk and aloe
quality: A+ (152.000 knots/sqm approx.)



DIPPED ANGLE
DIPPED COLLECTION



Subtle geometric shards of natural materials are juxtaposed with soft pastel colors creating movement and balance. Simple in aesthetic but complex in touch.

DIPPED ANGLE

DC.DAN19.100.-

weave: cotton
knot: himalayan wool, silk and aloe
quality: A+ (152.000 knots/sqm approx.)



DIPPED DAMASK ROCK (BA-06)

DC.DDM11.100.PS



see more colors on pag. 223

weave: cotton

knot: himalayan wool, silk and aloe

quality: A+ (152.000 knots/sqm approx.)



DIPPED SCRATCH UNDYED
DC.SCR1.100.SC

weave: cotton
knot: himalayan wool, silk and aloe
quality: A+ (152.000 knots/sqm approx.)

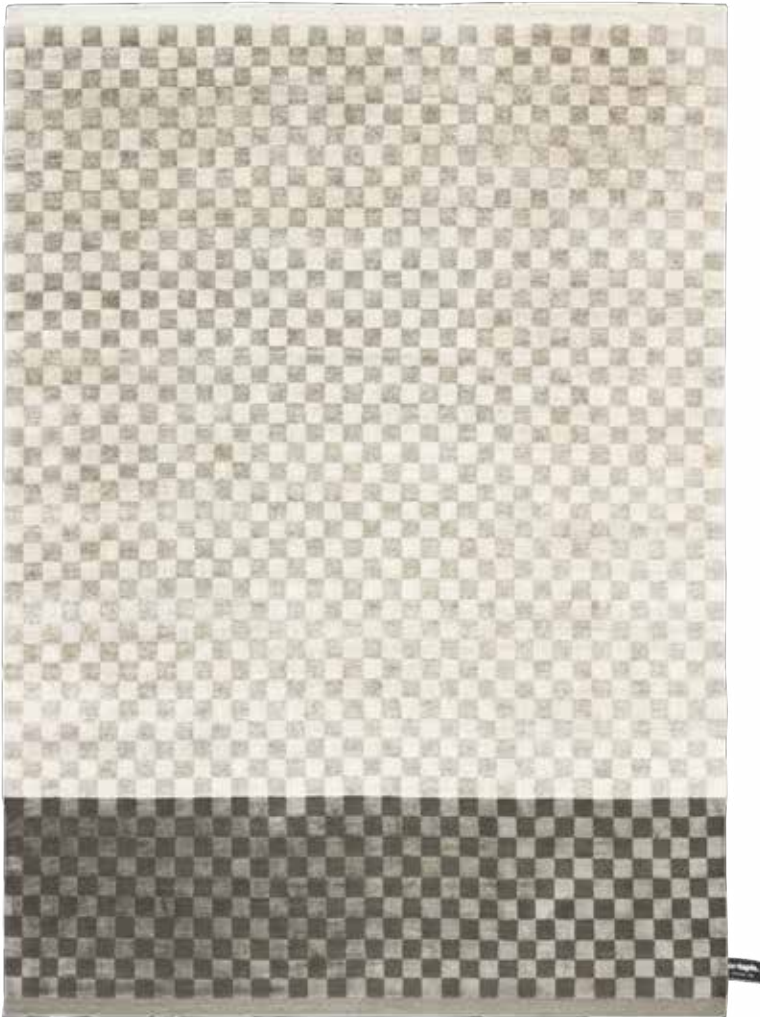


see more colors on pag. 225



DIPPED DAMIER SLEEK (A-015)

DC.DDA3.100.-



weave: cotton
knot: himalayan wool, silk and aloe
quality: A+ (152.000 knots/sqm approx.)



see more colors on pag. 223

DIPPED LOTTO COPPER (A-028)
DC.LOT7.100.PS



weave: cotton
knot: himalayan wool, silk and aloe
quality: A+ (152.000 knots/sqm approx.)



see more colors on pag. 224

DOUBLE DIPPED LOTTO
DC.DDL20.100.PS



weave: cotton
knot: himalayan wool, silk and aloe
quality: A+ (152.000 knots/sqm approx.)





ARCHITECTURAL COLLECTION

Rugs that aim to be part of the project, more than just decoration.

BEHIND SURFACES
ARCHITECTURAL COLLECTION
designed by Federico Delrosso



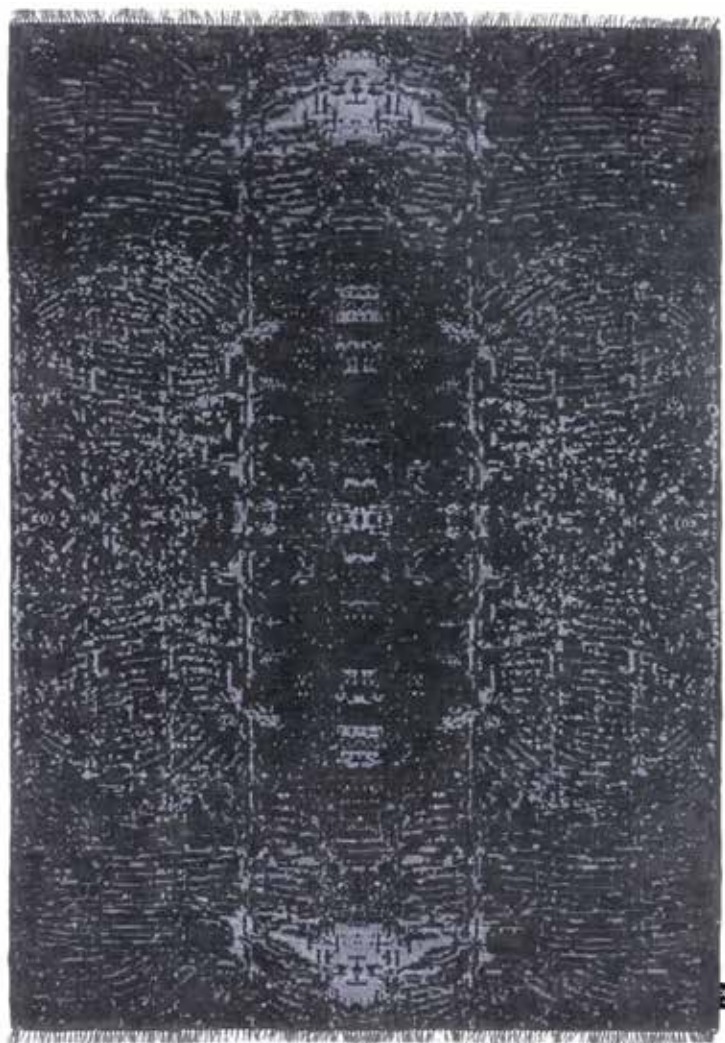
Behind Surfaces is a study by Federico Delrosso into what lies behind a surface, a material, a culture and even architecture itself.

BEHIND SURFACES

AC.BEH19.100.SC

designed by Federico Delrosso

weave: cotton
 knot: himalayan wool, silk and aloe
 quality: A+ (152.000 knots/sqm approx.)



Behind Surfaces is a rug that is stripped of its decorative function, exploring the depth of its materials, but also of a territory and a culture.

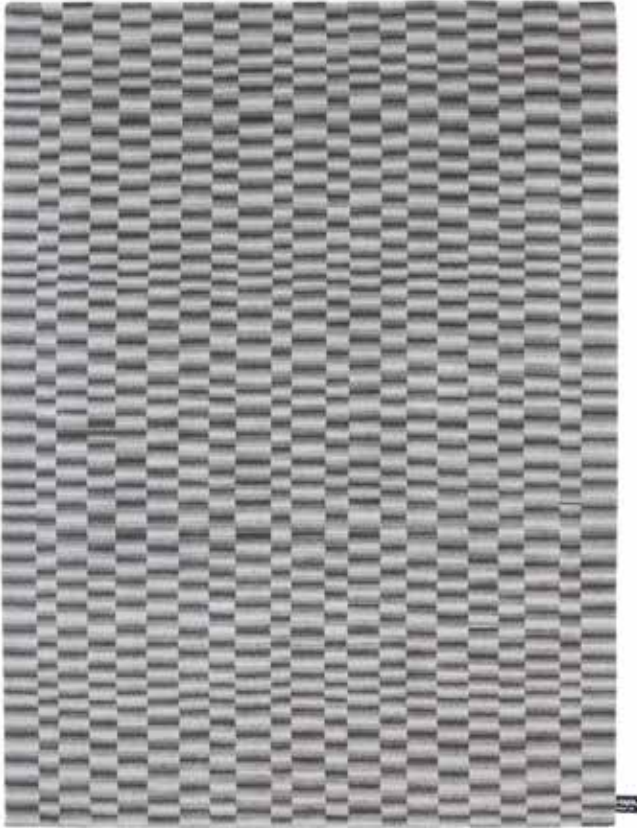




CHECK 2 COLD GREY

AC.CHB19.\$80.-

designed by Ludovica + Roberto Palomba



weave: cotton
knot: himalayan wool
quality: A (125.000 knots/sqm approx.)



CHECK 2 SLEEK

AC.CHB3.\$80.-

designed by Ludovica + Roberto Palomba



weave: cotton
knot: himalayan wool
quality: A (125.000 knots/sqm approx.)

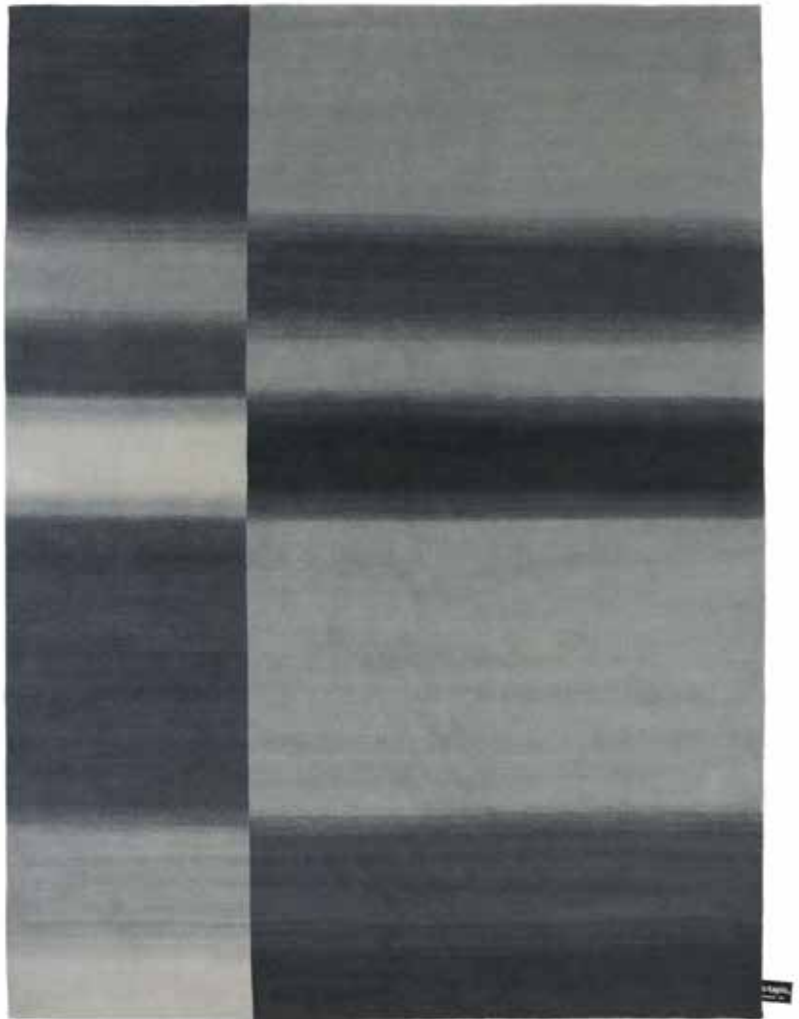


CHECK 3 COLD GREY

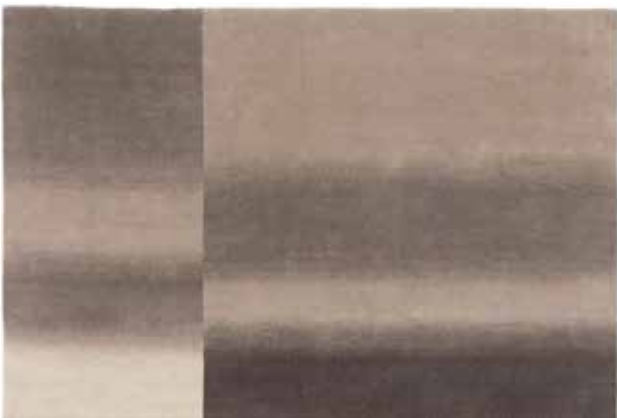
AC.CHC19.S80.-

designed by Ludovica + Roberto Palomba

weave: cotton
knot: himalayan wool
quality: A (125.000 knots/sqm approx.)



CHECK 3 SLEEK





CASELLARIO MONOCROMO COCO (A-011)

AC.CMC26.100.-

designed by Aldo Parisotto + Massimo Formenton



weave: cotton
knot: himalayan wool and silk
quality: A+ (152.000 knots/sqm approx.)



see more colors on pag. 227

CASELLARIO MONOCROMO GOLD (c-006)

AC.CMC25.100.-

designed by Aldo Parisotto + Massimo Formenton



weave: cotton
knot: himalayan wool and silk
quality: A+ (152.000 knots/sqm approx.)



CASELLARIO MONOCROMO

ARCHITECTURAL COLLECTION

designed by Aldo Parisotto + Massimo Formenton



Simple and delicate tonal variations are created by a combination of materials and knotting techniques. Far from patchwork, nothing on this rug is haphazard, the architect designers stay true to their trade and have created a rug where every knot has its place. Panels of pure silk are counter-balanced by panels of thick himalayan wool made from 2 different knotting techniques and the spaces between the panels show the exposed dyed cotton warp.

CUT OUT MONOCROMO ICE (D-064)

AC.CM021.100.-

designed by Aldo Parisotto + Massimo Formenton



see more colors on pag. 228

weave: cotton

knot: himalayan wool and bamboo silk

quality: B (89.000 knots/sqm approx.)



CUT OUT MONOCROMO PETROL (D-117)



CUT OUT MONOCROMO

ARCHITECTURAL COLLECTION

designed by Aldo Parisotto + Massimo Formenton



Fascinated by the sculptures of Isamu Noguchi, Parisotto + Formenton investigate the geometry and the joints between fluid forms. A rug that plays with the juxtaposition of different materials in the same chromatic tones. Glossy and opaque effects are given-off from the mixture of Himalayan wool and silk. Each reacting differently under the same light. A reaction that makes the perception of monochromatic contrast possible.



TYE 'N DYE PETROL (CG)
AC.TYW17.S80.-

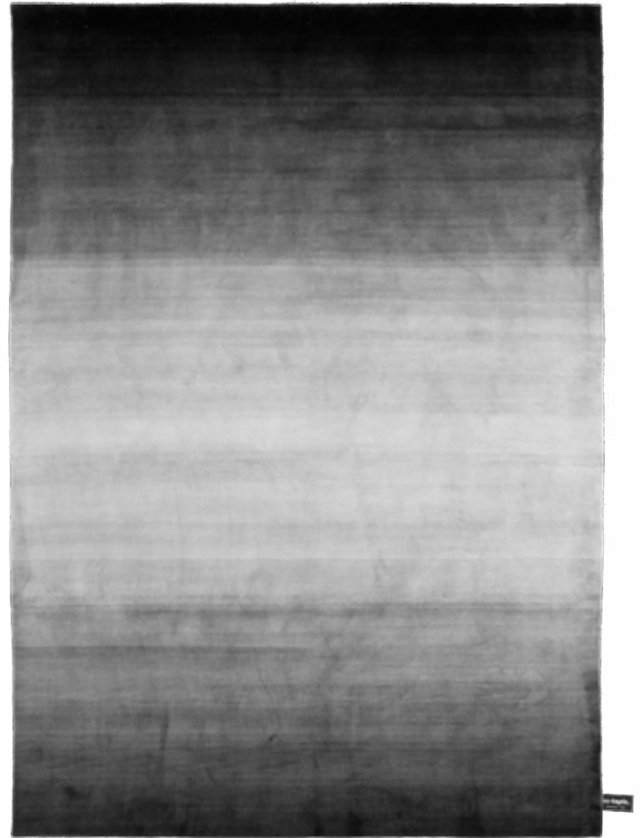


weave: cotton
knot: himalayan wool
quality: A (125.000 knots/sqm approx.)



see more colors on pag. 229

TYE 'N DYE SOIE GREY (BM)
AC.TYS19.S80.-



weave: cotton
knot: silk
quality: A (125.000 knots/sqm approx.)



TYE 'N DYE BICOLOR RUST/IRON

AC.TWB20.S80.-

weave: cotton
 knot: himalayan wool
 quality: A (125.000 knots/sqm approx.)



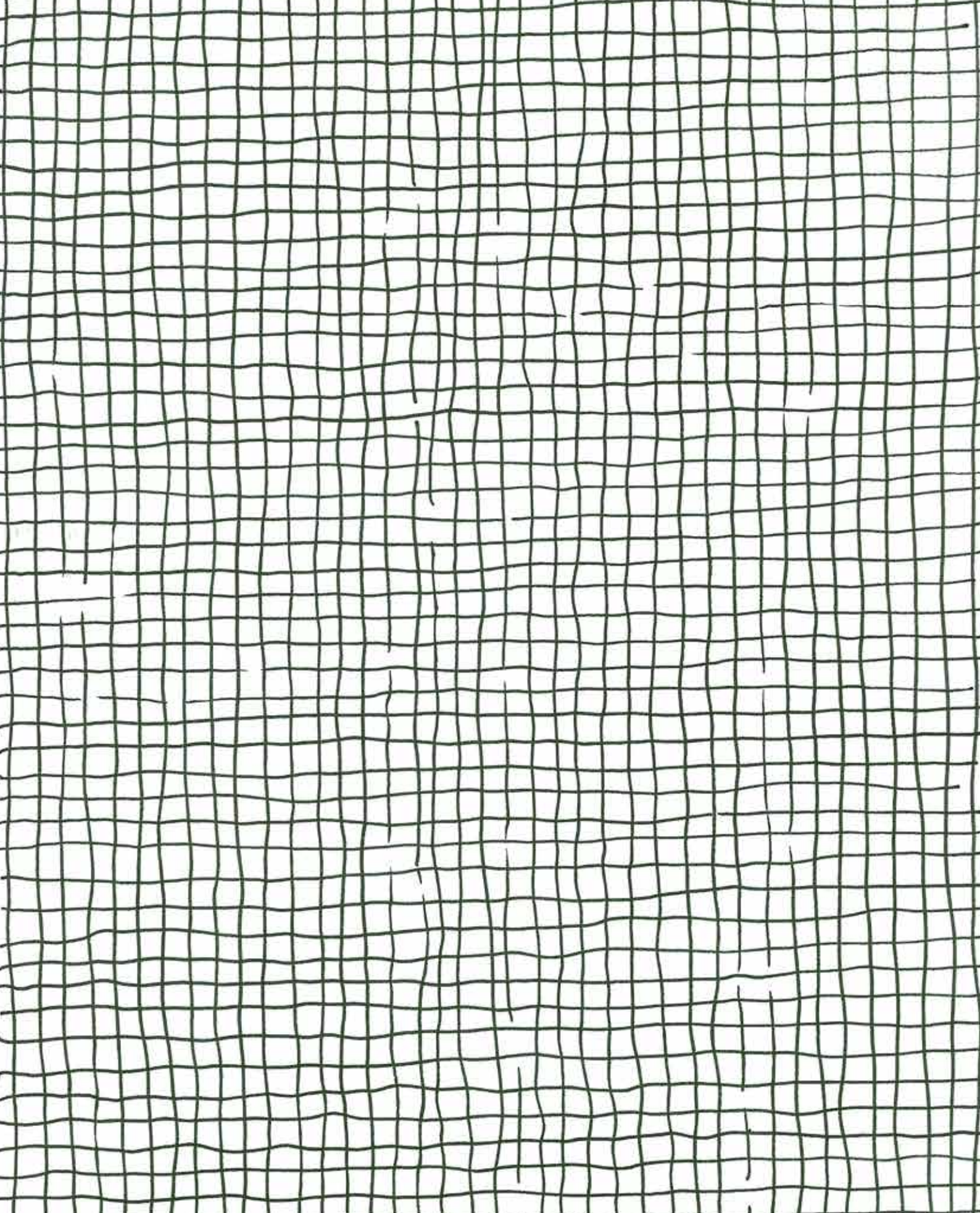
TYE 'N DYE BICOLOR BLUE/BEIGE



The tye 'n dye rugs make a bold statement and are easily customized. Just give us one color and we will create the soft degradè effect or give us two colors and we will create the bicolour blend.

see more colors on pag. 229

cc-tapis®





#1372

The Magic square is a grid where the total of every row and column including the diagonal lines always adds-up to the same number. This number is called the magic constant or the magic sum of the square. In the collection it is this number which gives the name to every rug.

**For the “Quadro Celeste”
collection Studiopepe
takes its inspiration from
archetypal graphics.**

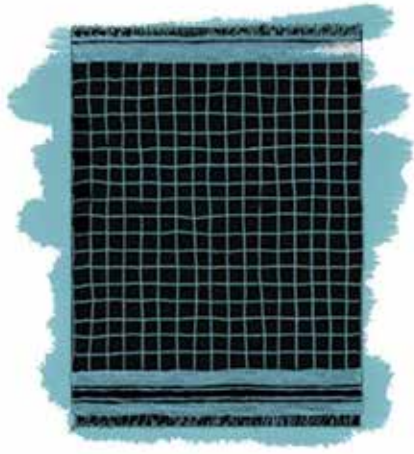
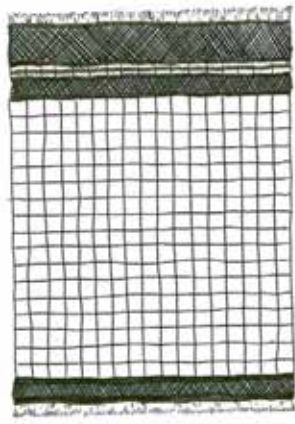
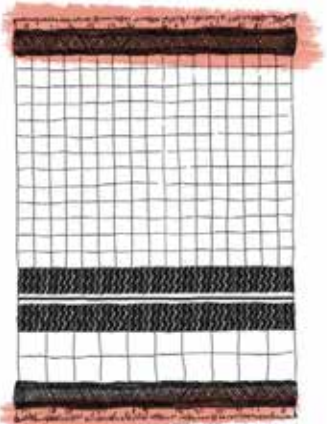
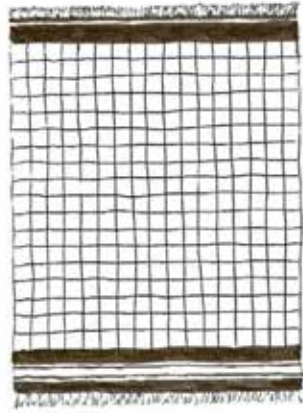
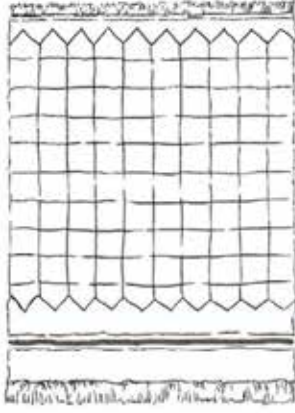
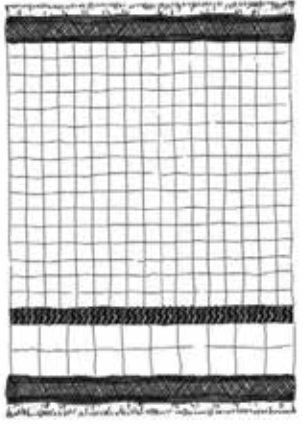
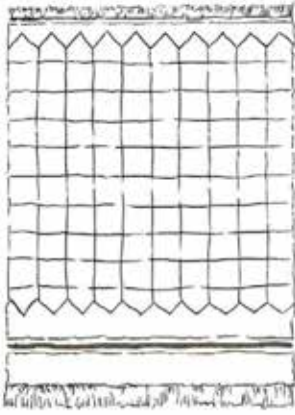


Collection by Studiopepe

1105



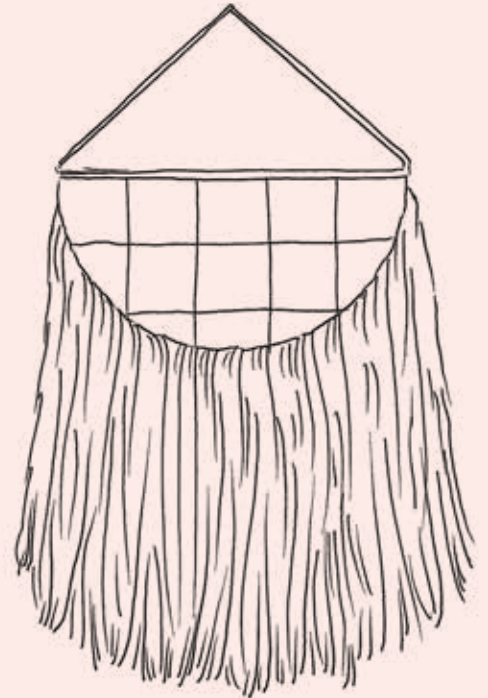
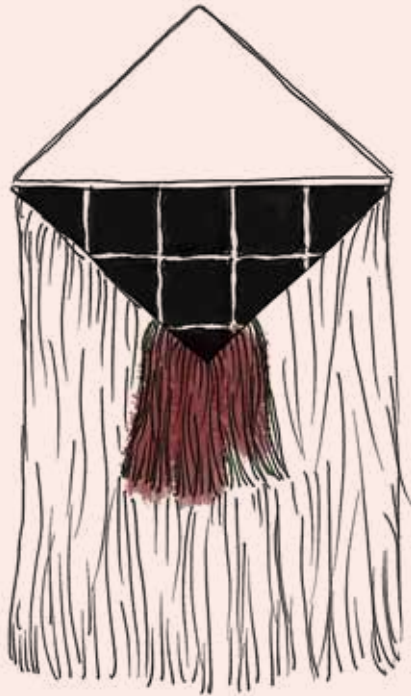
Quadro Celeste



Rug Collection



Quadro Celeste



65
175

**“ The magic constant
is the number which
becomes the name
for every rug and
wall hanging ”**

**For Salone del Mobile 2016,
Studioepepe interpreted
the fascinating balance
between materiality
and craftsmanship with
“The Soft Poetry
of Randomness”**



The Soft Poetry of Randomness synaesthetically explores Himalayan wool, a raw and dynamic material from the Tibetan highlands which through the expert knowledge and craftsmanship of cc-tapis artisans, is transformed into a refined and precious object. Wool is the main element in the installation and in Quadro Celeste, the new collection of rugs and wall hangings by Studiopepe.



The Soft Poetry Of Randomness



**“Wool
becomes
the main
element”**



1



The Soft Poetry Of Randomness

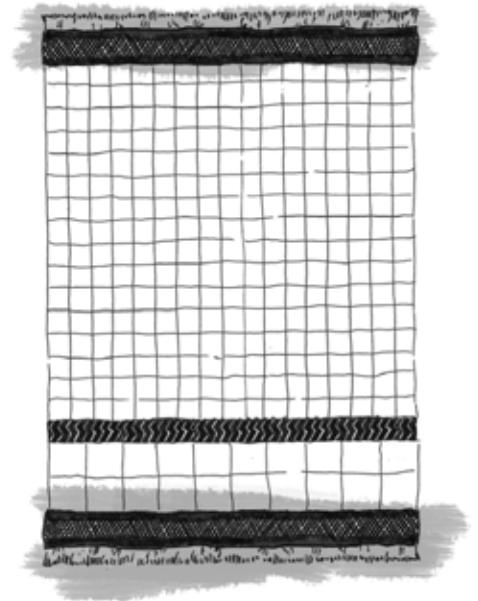


**Studiopepe
interprets the
fascinating balance
between materiality
and craftsmanship**





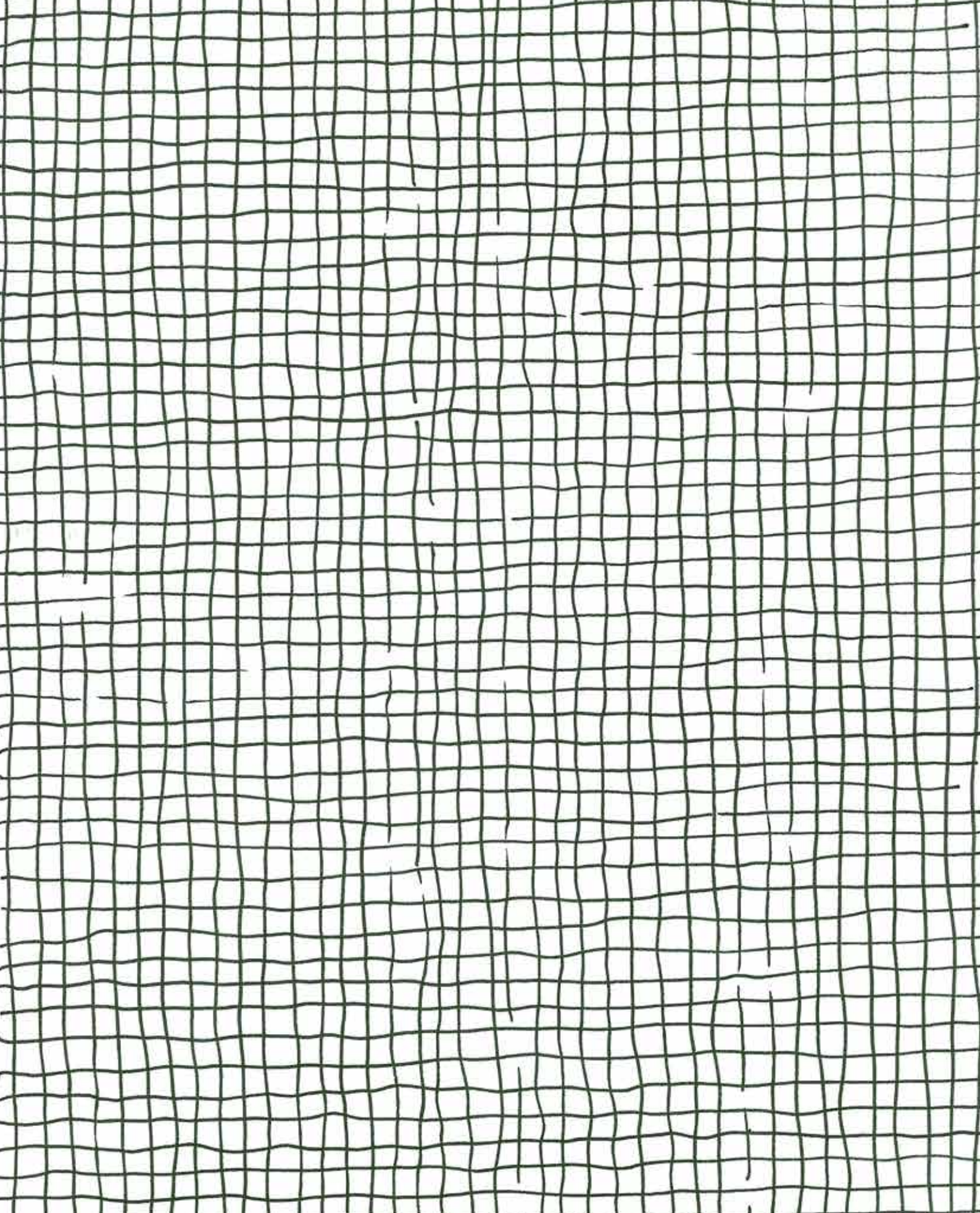
260



The Soft Poetry Of Randomness

The installation featured the new short-film by Lorenzo Gironi "The Fisrt", a film showing the magic of carpet production in Nepal.





CREATIVE MINDS



Chiara Andreatti



Marta Bagante



Baldessari e Baldessari



Claudio Bonoldi



Serena Confalonieri



CTRL ZAK



Federico Delrosso



Giuseppe Di Costanzo



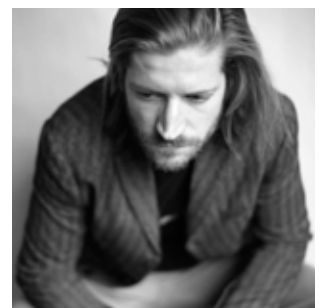
Nelly Maye



Ludovica + Roberto
Palomba



Aldo Parisotto +
Massimo Formenton



Federico Pepe



Sam Buckley



Clino Trini Castelli

CHIARA ANDREATTI
 MARTA BAGANTE
 BALDESSARI E BALDESSARI
 CLAUDIO BONOLDI
 SAM BUCKLEY
 CLINO TRINI CASTELLI
 SERENA CONFALONIERI
 CTRL ZAK
 FEDERICO DELROSSO
 GIUSEPPE DI COSTANZO
 KOSTANTIA MANTHOU
 VINCENZO MARSIGLIA
 NELLY MAYE
 LUDOVICA + ROBERTO PALOMBA
 A.PARISOTTO + M.FORMENTON
 FEDERICO PEPE
 ERIC SCHROEDER
 STUDIOPEPE.
 PATRICIA URQUIOLA
 ZANELLATO/BORTOTTO



Kostantia Manthou



Vincenzo Marsiglia



Eric Schroeder



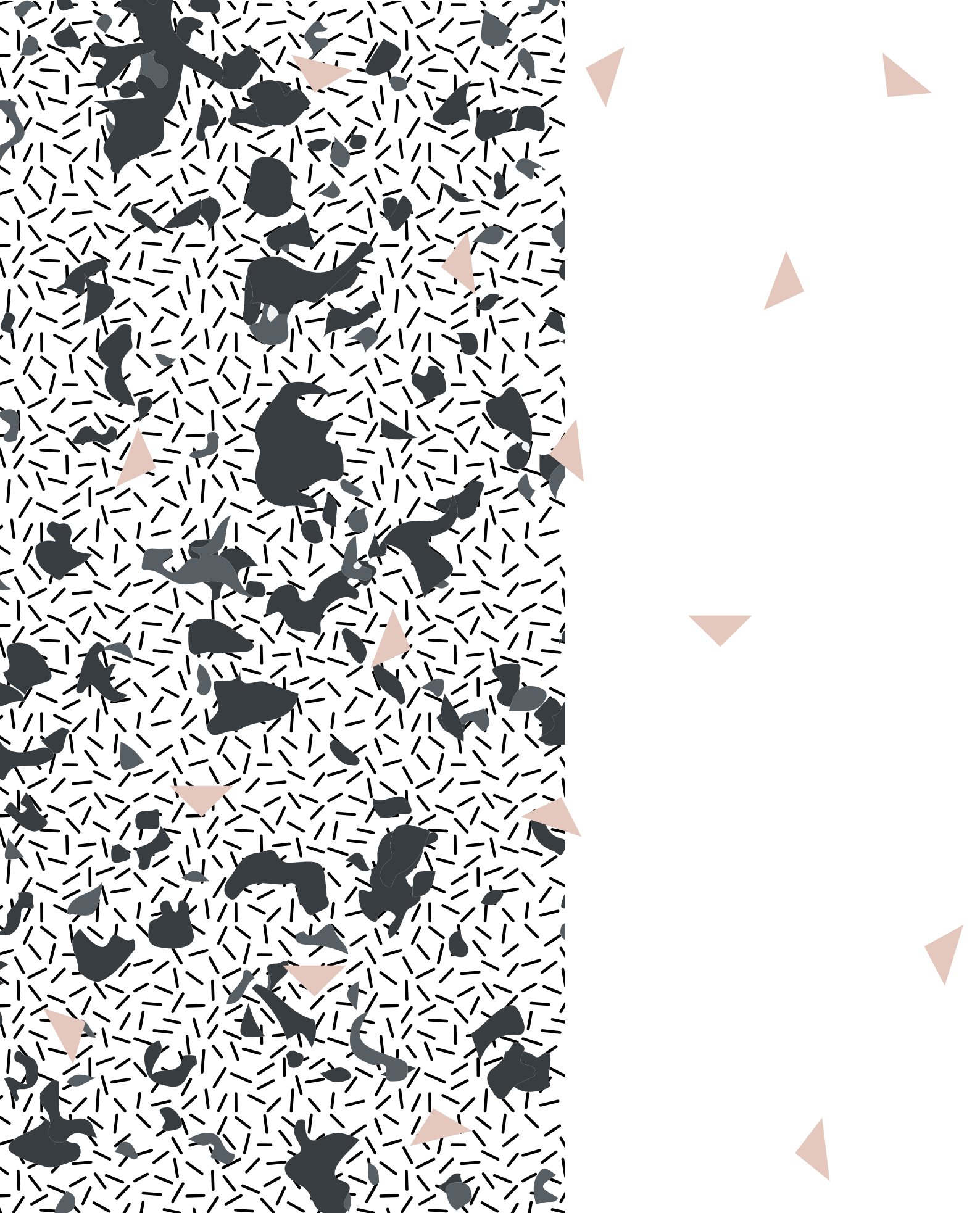
Studiopepe.



Patricia Urquiola



Zanellato/Bortotto



SUMMARY

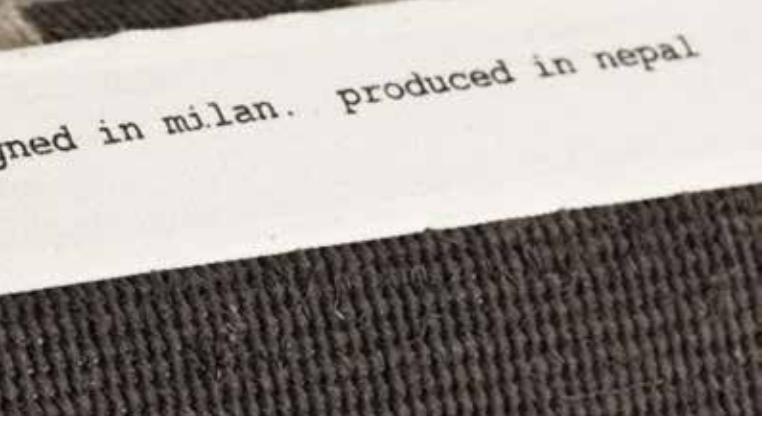


SIGNATURE

bayou	184
break	184
birth on the dancefloor	184
death on the dancefloor	184
soul on the dancefloor	184
caribe hilton	185
check (4/5)	185
credenza/credenza soie	185
cross(me)knot	186
giudecca	186
in the woods/in the woods 2.0	186
opstar	187
opstar soie	187
skin	187
quadro celeste #1105	188
quadro celeste #1	188
quadro celeste #34	188
quadro celeste #260	189
quadro celeste #870	189
quadro celeste - wallhanging #65 #175	189
quadro celeste - wallhanging #671 #1372	189
tweed	190
watch my sidewalk	190
eyes in chains	190
pilgrimage in tokyo	190
boyaketekka	190
primitive weave 1, 2, 3, 4	191
sacha	192
tectonica	192
visioni	193
visioni soie	193

CONTEMPORARY

coates place	194
damier	194
damier soie	194
damier 2.0	195
diamond	195
diamond soie	196
ecailles dégradé	197
ecailles dégradé 2.0	197
infini	197
infini stucco soie	198
lignes soie	198
lost in the fifties	199
lost in the fifties soie	199
maze	200
maze soie	200
mesh	200
mid-mod	201
mini infini	201
mini infini soie	202
ncfc	203
p.a.n.e.	203
p.a.n.e. soie	203
razor	203
siena	204
stella	204
stencil	204
stencil stucco	205



OLDIE

berber TV	206
nomad 2.0	206
oldie damier	207
oldie element	207
oldie element cubo	208
oldie	208
oldie full color	211
oldie soie	212
oldie spot	213
signi minimi	213

TRACES DE MEMOIRE

traces d'aubusson	214
traces d'orient	217
traces de arbre de vie	217
traces de damask	217
traces de damier	218
traces de double arbre de vie	218
traces de forêt	218
traces de jardin	218
traces de kazak	219
traces de savonnerie	220

DIPPED

dipped angle	222
dipped cut	222
dipped damask	223
dipped damier	223
dipped frame	223
dipped lotto	224
dipped origami	224
dipped ribbon	225
dipped scratch	225
double dipped lotto	225

ARCHITECTURAL

behind surfaces	226
check 2	226
check 3	226
casellario monocromo	227
colossal	228
cut out monocromo	228
tye 'n dye	229
tye 'n dye soie	229
tye 'n dye bicolor	229

NEW CLASSIC

arbre de vie	230
double arbre de vie	230
forêt	230
lotto	230
néoclassique	231
woodwedge	231

BAYOU

designed by Serena Confalonieri

weave: cotton
 knot: himalayan wool
 quality: A+ (152.000 knots/sqm approx.)



STANDARD color version
 SC.BAY19.100.SC



CUSTOM SILK color version
 SC.BAYX.100.-

BREAK

designed by Vincenzo Marsiglia

weave: cotton
 knot: himalayan wool
 quality: A (125.000 knots/sqm approx.)



STANDARD color version
 SC.VMS19.S80.-

DEATH ON THE DANCEFLOOR, BIRTH ON THE DANCEFLOOR, SOUL ON THE DANCEFLOOR

designed by Marta Bagante

weave: cotton
 knot: himalayan wool and silk
 quality: A++ (232.000 knots/sqm approx.)



STANDARD color version
 SC.MDR19.150.PS



STANDARD color version
 SC.DTD19.150.PS



STANDARD color version
 SC.HOD19.150.PS

CARIBE HILTON

designed by Eric Schroeder

weave: cotton
 knot: himalayan wool
 quality: A (125.000 knots/sqm approx.)



STANDARD color version
 SC.CAH19.S80.-

CHECK 4/5

designed by Ludovica + Roberto Palomba

weave: cotton
 knot: himalayan wool
 quality: DURRIES



STANDARD color version
 SC.CHD19.DURRIES.-

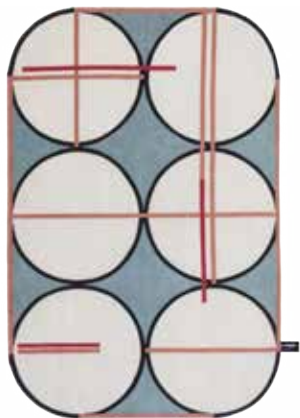


STANDARD color version
 SC.CHE19.DURRIES.-

CREDENZA/CREDENZA SOIE

designed by Patricia Urquiola e Federico Pepe

weave: cotton
 knot: himalayan wool/himalayan wool and silk
 quality: A+ (152.000 knots/sqm approx.)



BLUE color version
 SC.CRE19.100.-



RED color version
 SC.CRS20.100.-

CROSS (ME) KNOT "A", "B", "C"

designed by CTRL ZAK

weave: cotton

knot: himalayan wool and silk

quality: A++/A (232.000/125.000 knots/sqm approx.)



version A
SC.CKA19.150.-



version B
SC.CKB19.150.-



version C
SC.CKC19.150.-

GIUDECCA

designed by Zanellato/Bortotto

weave: cotton

knot: himalayan wool and silk

quality: A+ (152.000 knots/sqm approx.)



STANDARD color version
SC.GIU19.100.-

IN THE WOODS/IN THE WOODS 2.0

designed by Claudio Bonoldi

weave: cotton

knot: himalayan wool, silk and aloe

quality: A+ (152.000 knots/sqm approx.)



UNDYED color version
SC.ITW19.100.-



UNDYED color version
SC.ITT19.100.SC

OPSTAR

designed by Vincenzo Marsiglia

weave: cotton
 knot: himalayan wool
 quality: A (125.000 knots/sqm approx.)



STANDARD color version
 SC.VMS20.S80.-

OPSTAR SOIE

weave: cotton
 knot: himalayan wool and silk
 quality: A (125.000 knots/sqm approx.)



ICE (D-064, D-005) color
 version
 SC.VMSX1.S80.SC



GOLD (A-017) color
 version
 SC.VMSX2.S80.-

SKIN

designed by Kostantia Manthou

weave: cotton
 knot: himalayan wool
 quality: A+ (152.000 knots/sqm approx.)



PETROL (CE-02) color
 version
 SC.SKN17.100.-



STANDARD (BM-02) color
 version
 SC.SKN19.100.-

QUADRO CELESTE

designed by Studiopepe.

weave: cotton
knot: himalayan wool
quality: OLDIE



#1105
SC.QUA19.OLDIE.OC



#1105
SC.QUA20.OLDIE.OC



#1105
SC.QUA21.OLDIE.OC



#1105
SC.QUAX.OLDIE.OC

QUADRO CELESTE

designed by Studiopepe.

weave: cotton
knot: himalayan wool
quality: B (89.000 knots/sqm approx.)



#1
SC.QUB19.60.SC



#1
SC.QUB20.60.SC



#34
SC.QUC19.S80.SC



#34
SC.QUC20.S80.SC

QUADRO CELESTE

designed by Studiopepe.

weave: cotton
knot: himalayan wool
quality: A (125.000 knots/sqm approx.)



QUADRO CELESTE

designed by Studiopepe.

weave: cotton

knot: himalayan wool

quality: A (125.000 knots/sqm approx.)



#260
SC. QUD19.S80.SC



#870
SC. QUE19.S80.SC

QUADRO CELESTE

designed by Studiopepe.

weave: cotton

knot: himalayan wool

quality: A+ (152.000 knots/sqm approx.)



#65



#175



#671



#1372

TWEED

designed by Sam Buckley

weave: cotton

knot: himalayan wool

quality: A (125.000 knots/sqm approx.)



PETROL color version
SC.TWD17.S80.-



RED color version
SC.TWD19.S80.-

WATCH MY SIDEWALK

designed by Sam Buckley

weave: cotton

knot: himalayan wool and silk

quality: A (125.000 knots/sqm approx.)



STANDARD color version
SC.WMS19.S80.-



STANDARD color version
SC.WMS20.S80.-

EYES IN CHAINS, PILGRIMAGE IN TOKYO, BOYAKETEKKA,

designed by Federico Pepe

weave: cotton

knot: himalayan wool and silk

quality: A+ (152.000 knots/sqm approx.)



STANDARD color version
SC.PEA19.100.KC



STANDARD color version
SC.PEB19.100.-



STANDARD color version
SC.PEC19.100.-

PRIMITIVE WEAVE 1

designed by Chiara Andreatti

weave: cotton
 knot: himalayan wool
 quality: B (89.000 knots/sqm approx.)



STANDARD color version
 SC.PWA19.60.SC



CIPRIA color version
 SC.PWA20.60.SC

PRIMITIVE WEAVE 2

designed by Chiara Andreatti

weave: cotton
 knot: himalayan wool
 quality: B (89.000 knots/sqm approx.)



STANDARD color version
 SC.PWB19.60.SC



PURPLE color version
 SC.PWB20.60.SC

PRIMITIVE WEAVE 3

designed by Chiara Andreatti

weave: cotton
 knot: himalayan wool
 quality: B (89.000 knots/sqm approx.)



STANDARD color version
 SC.PWC19.60.SC



NAVY color version
 SC.PWC15.60.SC

PRIMITIVE WEAVE 4

designed by Chiara Andreatti

weave: cotton
 knot: himalayan wool
 quality: B (89.000 knots/sqm approx.)



RUST color version
 SC.PWD20.60.SC



NAVY color version
 SC.PWD15.60.SC

SACHA

designed by Nelly Maye

weave: cotton

knot: himalayan wool and silk

quality: A+ (152.000 knots/sqm approx.)



BLACK&WHITE color
version
SC.NET19.100.-



CIPRIA color version
SC.NET20.100.-



ICE color version
SC.NET21.100.-



RUST color version
SC.NET31.100.-

TECTONICA

designed by Clino Trini Castelli

weave: cotton

knot: himalayan wool

quality: A (125.000 knots/sqm approx.)



RED-VIOLET color version
SC.NET32.100.-



COBALTO color version
SC.TEC19.S80.-



NATURAL color version
SC.TEC20.S80.-

VISIONI

designed by Patricia Urquiola

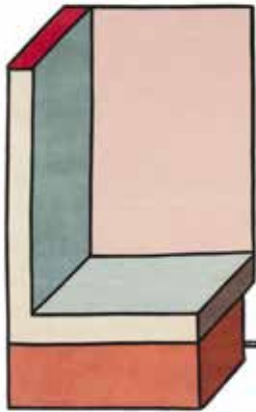
weave: cotton
knot: himalayan wool
quality: A (125.000 knots/sqm approx.)



VISIONI SOIE

designed by Patricia Urquiola

weave: cotton
knot: himalayan wool and silk blended
quality: A (125.000 knots/sqm approx.)



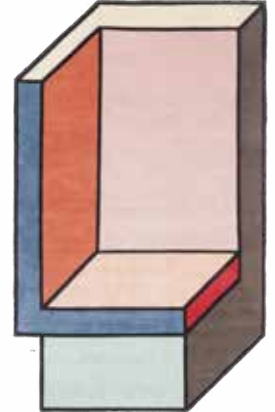
STANDARD color version
SC.VIA19.S80.-



STANDARD color version
SC.VIB19.S80.-



STANDARD color version
SC.VAS19.S80.-



STANDARD color version
SC.VBS19.S80.-

COATES PLACE

weave: cotton

knot: himalayan wool, silk and aloe

quality: A+ (152.000 knots/sqm approx.)



STANDARD color version
YELLOW binding
CC.TRG1.100.-



STANDARD color version
BLACK (BT-01) fringes
CC.TRG1.100.KC

DAMIER

weave: cotton

knot: himalayan wool

quality: A (125.000 knots/sqm approx.)



STANDARD color version
CC.DAM19.S80.SC

DAMIER SOIE

weave: cotton

knot: himalayan wool and silk

quality: A (125.000 knots/sqm approx.)



SLEEK color version
CC.DAS3.S80.PS

DAMIER 2.0

weave: cotton
 knot: himalayan wool and silk
 quality: A (125.000 knots/sqm approx.)



DARK SLEEK color version
 CC.DAT3.S80.-



DARK ICE color version
 CC.DAT21.S80.-



DARK COPPER color version
 CC.DAT7.S80.-



DARK BLUE color version
 CC.DATX.S80.-

DIAMOND

weave: cotton
 knot: himalayan wool
 quality: A+ (152.000 knots/sqm approx.)



LIGHT SLEEK color version
 CC.DAT4.S80.-



STANDARD color version
 CC.DMD19.100.SC

DIAMOND SOIE

weave: cotton

knot: himalayan wool and silk

quality: A+ (152.000 knots/sqm approx.)



SLEEK color version
CC.DMS3.100.SC



NAVY color version
CC.DMS15.100.SC



PETROL-TAUPE color version
CC.DMS18.100.SC



PETROL-RUST color version
CC.DMSX.100.SC



ICE color version
CC.DMS21.100.SC



TUNDRA color version
CC.DMS23.100.SC



CIPRIA color version
CC.DMS28.100.SC



SAGE color version
CC.DMS29.100.SC

ECAILLES DEGRADÉ

weave: cotton
 knot: himalayan wool and silk
 quality: A (125.000 knots/sqm approx.)



SLEEK (AE) color version
 CC.ECD3.S80.SC



NAVY (BA) color version
 CC.ECD15.S80.SC



PETROL (CG) color version
 CC.ECD17.S80.SC

ECAILLES DEGRADÉ 2.0

weave: cotton
 knot: himalayan wool and silk
 quality: A (125.000 knots/sqm approx.)



TEAL (CF) color version
 CC.ECT19.S80.-

INFINI

weave: cotton
 knot: himalayan wool
 quality: A (125.000 knots/sqm approx.)



STANDARD color version
 mint (CH-09) fringes
 CC.INF19.S80.KC



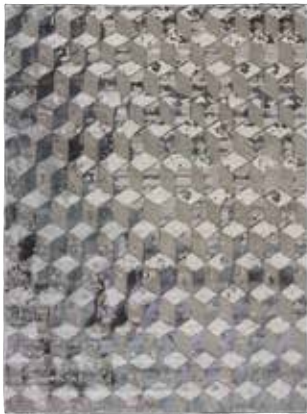
TUNDRA color version
 CC.INF23.S80.-

INFINI STUCCO SOIE

weave: cotton

knot: himalayan wool and silk

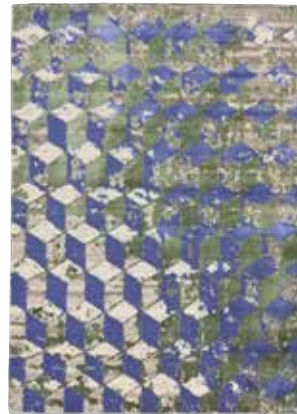
quality: A+ (152.000 knots/sqm approx.)



SLEEK color version
CC.ISS3.100.-



CHIC color version
CC.ISS5.100.PS



ROCK color version
CC.ISS15.100.-



PETROL color version
CC.ISS17.100.-

LIGNES SOIE

weave: cotton

knot: himalayan wool and silk

quality: A (125.000 knots/sqm approx.)



ICE color version
CC.ISS21.100.-



STANDARD color version
CC.LIS19.S80.SC

LOST IN THE FIFTIES

weave: cotton
 knot: himalayan wool
 quality: A+ (152.000 knots/sqm approx.)



STANDARD color version
 CC.LAB19.100.-

LOST IN THE FIFTIES SOIE

weave: cotton
 knot: himalayan wool and silk
 quality: A+ (152.000 knots/sqm approx.)



ALL SILK color version
 CC.LASX.100.-



DARK SLEEK color version
 CC.LAS3.100.-



LIGHT SLEEK color version
 CC.LAS4.100.SC



FADED color version
 CC.LAS20.100.-

MAZE

weave: cotton
 knot: himalayan wool
 quality: A (125.000 knots/sqm approx.)



STANDARD color version
 CC.MAZ19.S80.-

MAZE SOIE

weave: cotton
 knot: himalayan wool and silk
 quality: A (125.000 knots/sqm approx.)



BRONZE color version
 CC.MAS22.S80.SC

MESH

weave: cotton
 knot: himalayan wool and silk
 quality: A+ (152.000 knots/sqm approx.)



SLEEK color version
 CC.MSH3.100.-



NAVY color version
 CC.MSH15.100.-



ICE color version
 CC.MSH21.100.SC

MID-MOD

weave: cotton
 knot: himalayan wool and silk
 quality: A+ (152.000 knots/sqm approx.)



SLEEK color version
 CC.GIO3.100.SC



STANDARD color version
 CC.GIO19.100.SC



CIPRIA color version
 CC.GIO20.100.-



PETROL-RUST color version
 CC.GIOX.100.-

MINI INFINI

weave: cotton
 knot: himalayan wool
 quality: A (125.000 knots/sqm approx.)



BRONZE color version
 CC.GIO22.100.SC



STANDARD color version
 CC.IMI19.S80.SC



CIPRIA color version
 CC.IMI20.S80.-

MINI INFINI SOIE

weave: cotton

knot: himalayan wool and silk

quality: A (125.000 knots/sqm approx.)



UNDYED color version
CC.IMS1.S80.-



SLEEK color version
CC.IMS3.S80.-



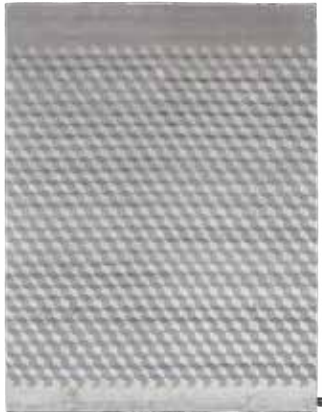
COPPER color version
CC.IMS7.S80.-



COCO color version
CC.IMS26.S80.-



ICE color version
CC.IMSX.S80.-



FULL ICE color version
CC.IMS21.S80.-



FULL BRONZE color version
CC.IMS22.S80.-



FULL GOLD color version
CC.IMS25.S80.-

NCFC

weave: cotton
knot: himalayan wool
quality: A (125.000 knots/sqm approx.)



STANDARD color version
CC.NCF19.S80.SC

P.A.N.E.

weave: cotton
knot: himalayan wool
quality: A (125.000 knots/sqm approx.)



STANDARD color version
CC.ESA19.S80.SC

P.A.N.E. SOIE

weave: cotton
knot: himalayan wool and silk
quality: A (125.000 knots/sqm approx.)



BRONZE color version
CC.ESS22.S80.-

RAZOR

weave: cotton
knot: himalayan wool and silk
quality: A (125.000 knots/sqm approx.)



STANDARD color version
CC.RAZ19.S80.SC

SIENA

weave: cotton
 knot: himalayan wool, silk and aloe
 quality: A+ (152.000 knots/sqm approx.)



CIPRIA color version
 CC.SIE19.100.-



BROWN color version
 CC.SIE20.100.-

STELLA

weave: cotton
 knot: himalayan wool, silk and aloe
 quality: A (125.000 knots/sqm approx.)



COPPER color version
 CC.ROM7.S80.-



PETROL color version
 CC.ROM17.S80.-

STENCIL

weave: cotton
 knot: himalayan wool and silk
 quality: A+ (152.000 knots/sqm approx.)



STANDARD color version
 CC.STE19.100.SC



CIPRIA color version
 CC.STE20.100.SC



ICE color version
 CC.STE21.100.-

STENCIL STUCCO

weave: cotton

knot: himalayan wool and silk

quality: A+ (152.000 knots/sqm approx.)



ICE color version
CC.STS21.100.SC

BERBER TV

weave: cotton
 knot: himalayan wool
 quality: OLDIE



SLEEK color version
 OC.BER3.OLDIE.OC



STANDARD color version
 OC.BER20.OLDIE.OC



CIPRIA color version
 OC.BER28.OLDIE.OC



PEACH color version
 OC.BERX1.OLDIE.OC

NOMAD 2.0

weave: cotton
 knot: himalayan wool
 quality: OLDIE



STANDARD DARK color
 version
 OC.NOM19.OLDIE.OC



STANDARD LIGHT color
 version
 OC.NOM20.OLDIE.OC

OLDIE DAMIER

weave: cotton
 knot: undyed himalayan wool
 quality: OLDIE



RED (AQ-01) color version
 OC.DAM1.OLDIE.OC



WHITE color version
 OC.DAM1.OLDIE.OC



PETROL (CG-02) color version
 OC.DAM1.OLDIE.OC



TOBACCO (DO-03) color version
 OC.DAM1.OLDIE.OC

OLDIE ELEMENT

weave: cotton
 knot: undyed himalayan wool
 quality: OLDIE



MINT (CH-09) color version
 OC.ELE1.OLDIE.OC



YELLOW (DI-08) color version
 OC.ELE1.OLDIE.OC



AVIO (BG-06) color version
 OC.ELE1.OLDIE.OC



BLACK (BT-01) color version
 OC.ELE1.OLDIE.OC

OLDIE ELEMENT CUBO

weave: cotton
 knot: himalayan wool
 quality: OLDIE



SAGE (CP-12) color
 version
 OC.ELC29.OLDIE.OC



CIPRIA (EJ-09) color
 version
 OC.ELC28.OLDIE.OC



BLUE SKY (BI-12) color
 version
 OC.ELC21.OLDIE.OC

OLDIE LIGHT

weave: cotton
 knot: dark and light undyed himalayan wool
 quality: OLDIE



LIGHT BLACK (BT-01) color
 version
 OC.STD1.OLDIE.OC



LIGHT CAMO (CP-02) color
 version
 OC.STD1.OLDIE.OC



LIGHT TURQUOISE (CJ-04)
 color version
 OC.STD1.OLDIE.OC



LIGHT (CE-01) color
 version
 OC.STD1.OLDIE.OC



LIGHT YELLOW (DJ-02)
color version
OC.STD1.OLDIE.OC



LIGHT PEACH (DN-11)
color version
OC.STD1.OLDIE.OC



LIGHT CIPRIA (EJ-09)
color version
OC.STD1.OLDIE.OC



LIGHT BORDEAUX (EG-04)
color version
OC.STD1.OLDIE.OC



LIGHT LIME (CK-04) color
version
OC.STD1.OLDIE.OC



LIGHT VIOLET (ES-05)
color version
OC.STD1.OLDIE.OC



LIGHT CHOC (AK-01) color
version
OC.STD1.OLDIE.OC

OLDIE DARK

weave: cotton

knot: dark and light undyed himalayan wool

quality: OLDIE



DARK LIME (CK-04) color
version
OC.STD2.OLDIE.OC



DARK CIPRIA (EJ-09) color
version
OC.STD2.OLDIE.OC



DARK CHOC (AK-01) color
version
OC.STD2.OLDIE.OC



DARK AVIO (BG-04) color
version
OC.STD2.OLDIE.OC



DARK GREY (BA-11) color
version
OC.STD2.OLDIE.OC



DARK MINT (CH-09) color
version
OC.STD2.OLDIE.OC



DARK BLUE SKY (CB-07)
color version
OC.STD2.OLDIE.OC



DARK PETROL (CE-03)
color version
OC.STD2.OLDIE.OC



DARK YELLOW (DJ-02)
color version
OC.STD2.OLDIE.OC



DARK PUMPKIN (DI-03)
color version
OC.STD2.OLDIE.OC



DARK ORANGE (DK-01)
color version
OC.STD2.OLDIE.OC

OLDIE FULL BLACK (BM-01, BM-02)

weave: cotton
knot: himalayan wool
quality: OLDIE



BLACK TOBACCO (EH-03)
color version
OC.FUL19.OLDIE.OC



BLACK TAUPE (AE-05)
color version
OC.FUL19.OLDIE.OC



BLACK (BT-01) color
version
OC.FUL19.OLDIE.OC



BLACK ROCK (BA-06) color
version
OC.FUL19.OLDIE.OC

OLDIE FULL PIOMBO (AJ-01)

weave: cotton
 knot: himalayan wool
 quality: OLDIE



BLACK CIPRIA (EJ-09)
 color version
 OC.FUL19.OLDIE.OC



PIOMBO BLACK (BT-01)
 color version
 OC.FUL20.OLDIE.OC



PIOMBO RUST (EJ-03)
 color version
 OC.FUL20.OLDIE.OC

OLDIE FULL IRON (BL-05)

weave: cotton
 knot: himalayan wool
 quality: OLDIE



BLUE (BL-02) color
 version
 OC.FUL21.OLDIE.OC

OLDIE SOIE

weave: cotton
 knot: himalayan wool and silk
 quality: OLDIE



SLEEK (AE-07, AE-09)
 color version
 OC.SS04.OLDIE.OC



ICE (D-005) color
 version
 OC.SS021.OLDIE.OC

OLDIE SPOT

weave: cotton
 knot: undyed himalayan wool
 quality: OLDIE



BLACK (BT-01) color
 version
 OC.STD20.OLDIE.OC

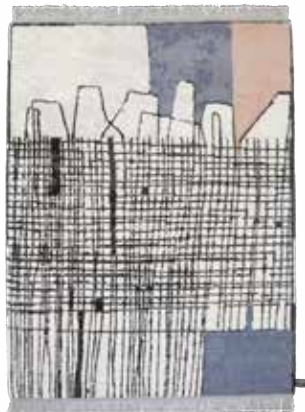
SEGNU MINIMI

designed by Giuseppe Di Costanzo

weave: cotton
 knot: himalayan wool
 quality: OLDIE



UNDYED color version
 green (CP-05) fringes
 OC.SEM1.OLDIE.OC



CIPRIA (EJ-09) color
 version
 grey (BM-08) fringes
 OC.SEM28.OLDIE.OC



YELLOW (DJ-02) color
 version
 grey (BM-05) fringes
 OC.SEM20.OLDIE.OC

TRACES D'AUBUSSON

weave: cotton

knot: himalayan wool and silk

quality: A+ (152.000 knots/sqm approx.)



LIGHT UNDYED color
version
NAT fringes
TC.AUB2.100.PS



LIGHT SLEEK (AE-07)
color version
A-015 fringes
TC.AUB4.100.PS



LIGHT CHIC (AQ-01) color
version
red (AQ-01) fringes
TC.AUB6.100.PS



LIGHT COPPER (A-028)
color version
copper (A-028) fringes
TC.AUB8.100.PS



LIGHT CHOC (AK-01, EM-01)
color version
NAT fringes
TC.AUB14.100.PS



LIGHT PETROL (CG-02)
color version
NAT fringes
TC.AUB18.100.PS



LIGHT CARAMEL (AH-02)
color version
caramel (AH-02) fringes
TC.AUB27.100.PS



LIGHT CIPRIA (EJ-09)
color version
cipria (EJ-09) fringes
TC.AUB28.100.PS



LIGHT SAGE (B-068) color
version
sage (B-068) fringes
TC.AUB29.100.PS



DARK UNDYED color
version
NAT fringes
TC.AUB1.100.PS



DARK SLEEK (AE-07) color
version
A-015 fringes
TC.AUB3.100.PS



DARK CHIC (AQ-01) color
version
A-017 fringes
TC.AUB5.100.PS



DARK COPPER (A-028)
color version
copper (A-028) fringes
TC.AUB7.100.PS



DARK CAMO (AH-12, B-021)
color version
B-021 fringes
TC.AUB9.100.PS



DARK ROCK (CK-04, BA-06)
color version
BA-06 fringes
TC.AUB11.100.PS



DARK NAVY (BC-02) color
version
navy (BC-02) fringes
TC.AUB15.100.PS



DARK PETROL (CG-02)
color version
petrol (CG-02) fringes
TC.AUB17.100.PS



DARK ICE (D-064) color
version
ice (D-064) fringes
TC.AUB21.100.PS



DARK BLACK (BT-01) color
version
black (BT-01) fringes
TC.AUB20.100.PS

TRACES D'AUBUSSON FULL

weave: cotton
knot: himalayan wool and silk
quality: A+ (152.000 knots/sqm approx.)



FULL ICE (BG-04
background, D-005 design)
color version
TC.AUF21.100.SC



FULL BRONZE (AJ-01
background, A-060 design)
color version
TC.AUF22.100.KC



FULL BLACK&WHITE (BT-01
background, WHITE design)
color version
TC.AUF20.100.PS

TRACES D'ORIENT

weave: cotton
 knot: himalayan wool and silk
 quality: A+ (152.000 knots/sqm approx.)



STANDARD color version
 TC.ORI19.100.-

TRACES DE ARBRE DE VIE

weave: cotton
 knot: undyed himalayan wool and silk
 quality: A (125.000 knots/sqm approx.)



DARK SLEEK (AE-07) color
 version
 AE-07 fringes
 TC.ADV3.S80.KC

TRACES DE DAMASK

weave: cotton
 knot: himalayan wool and silk
 quality: A+ (152.000 knots/sqm approx.)



LIGHT SLEEK (AE-07) color
 version
 A-015, AE-07 fringes
 TC.NDM4.100.PS



DARK UNDYED color
 version
 NAT fringes
 TC.NDM1.100.PS



DARK CAMO (B-021) color
 version
 A-013 fringes
 TC.NDM9.100.PS

TRACES DE DAMIER

weave: cotton
 knot: undyed himalayan wool
 quality: B (89.000 knots/sqm approx.)



STANDARD color version
 AK-01 fringes
 TC.DAM1.60.KC

TRACES DE DOUBLE ARBRE DE VIE

weave: cotton
 knot: undyed himalayan wool and silk
 quality: A (125.000 knots/sqm approx.)



DARK COPPER (A-028,
 A-052) color version
 copper (A-028) fringes
 TC.DAV7.S80.PS

TRACES DE FORÊT

weave: cotton
 knot: undyed himalayan wool and silk
 quality: A (125.000 knots/sqm approx.)



DARK SLEEK (AE-07) color
 version
 AE-07 fringes
 TC.FOR3.S80.KC

TRACES DE JARDIN

weave: cotton
 knot: himalayan wool and silk
 quality: A+ (152.000 knots/sqm approx.)



LIGHT SLEEK (AE-07) color
 version
 A-015 fringes
 TC.NJA4.100.PS



DARK UNDYED color
 version
 NAT fringes
 TC.NJA1.100.PS



DARK COPPER (A-028)
color version
copper (A-028) fringes
TC.NJA7.100.PS



DARK CAMO (B-021, AH-12)
color version
B-021 fringes
TC.NJA9.100.PS



DARK ROCK (BA-06, CK-04)
color version
blue (BA-06) fringes
TC.NJA11.100.PS



FULL SLEEK (AE-07, AE-06)
color version
sleek (AE-07) fringes
TC.NJA20.100.PS

TRACES DE KAZAK

weave: cotton
knot: himalayan wool and silk
quality: A+ (152.000 knots/sqm approx.)



LIGHT SLEEK (A-015)
color version
A-015 fringes
TC.EKZ4.100.PS



LIGHT COPPER (A-028)
color version
copper (A-028) fringes
TC.EKZ8.100.PS



LIGHT ROCK (BA-06, CK-04)
color version
blue (BA-06) fringes
TC.EKZ12.100.PS



LIGHT PETROL (CG-02, A-020)
color version
A-020 fringes
TC.EKZ18.100.PS



DARK UNDYED color
version
NAT fringes
TC.EKZ1.100.PS



DARK NAVY (BC-02) color
version
D-048 fringes
TC.EKZ15.100.PS

TRACES DE SAVONNERIE

weave: cotton
knot: himalayan wool and silk
quality: A+ (152.000 knots/sqm approx.)



LIGHT SLEEK (AE-07)
color version
AE-07 fringes
TC.SAV4.100.PS



LIGHT CHOC (AK-01) color
version
orange (DM-05) fringes
TC.SAV14.100.KC



LIGHT CAMEL (AH-02)
color version
AH-02 fringes
TC.SAV27.100.PS



DARK UNDYED color
version
NAT fringes
TC.SAV1.100.PS



DARK SLEEK (AE-07) color
version
A-015 fringes
TC.SAV3.100.PS



DARK CHIC (AQ-01) color
version
A-017 fringes
TC.SAV5.100.PS

DIPPED ANGLE

weave: cotton
 knot: himalayan wool, silk and aloe
 quality: A+ (152.000 knots/sqm approx.)



STANDARD color version
 DC.DAN19.100.-

DIPPED CUT

weave: cotton
 knot: himalayan wool, silk and aloe
 quality: A+ (152.000 knots/sqm approx.)



STANDARD color version
 DC.DCU19.100.-



FULL IVORY (A-060) color version
 DC.DCU30.100.-



FULL A-071 color version
 DC.DCUX.100.-

DIPPED DAMASK

weave: cotton
 knot: himalayan wool, silk and aloe
 quality: A+ (152.000 knots/sqm approx.)



SLEEK (A-015) color
 version
 DC.DDM3.100.PS



ROCK (BA-06) color
 version
 DC.DDM11.100.PS

DIPPED DAMIER

weave: cotton
 knot: himalayan wool, silk and aloe
 quality: A+ (152.000 knots/sqm approx.)



SLEEK (A-015) color
 version
 DC.DDA3.100.-



CAMO (B-021) color
 version
 DC.DDA9.100.-

DIPPED FRAME

weave: cotton
 knot: himalayan wool, silk and aloe
 quality: A+ (152.000 knots/sqm approx.)



STANDARD color version
 DC.DFR17.100.-



BRONZE (A-013) color
 version
 DC.DFR22.100.-



PETROL (D-117) color
 version
 DC.DFR18.100.-



BLACK (BT-01) color
 version
 DC.DFR20.100.-

DIPPED LOTTO

weave: cotton

knot: himalayan wool, silk and aloe

quality: A+ (152.000 knots/sqm approx.)



COPPER (A-028) color
version
DC.LOT7.100.PS



CUSTOM (EG-05) color
version
DC.LOTX.100.PS



BLACK (BT-01) color
version
DC.LOT19.100.PS



PETROL (CG-04) color
version
DC.LOT17.100.PS

DIPPED ORIGAMI

weave: cotton

knot: himalayan wool, silk and aloe

quality: A+ (152.000 knots/sqm approx.)



STANDARD color version
DC.DOR19.100.-



ICE color version
DC.DOR21.100.-



SAGE color version
DC.DOR29.100.-

DIPPED RIBBON

weave: cotton
 knot: himalayan wool, silk and aloe
 quality: A+ (152.000 knots/sqm approx.)



DIPPED SCRATCH

weave: cotton
 knot: himalayan wool, silk and aloe
 quality: A+ (152.000 knots/sqm approx.)



STANDARD color version
 DC.DFO19.100.SC



BLUE color version
 DC.DFO20.100.-



UNDYED color version
 DC.SCR1.100.SC



ROCK (CK-02) color
 version
 DC.SCR11.100.-

DOUBLE DIPPED LOTTO

weave: cotton
 knot: himalayan wool, silk and aloe
 quality: A+ (152.000 knots/sqm approx.)



STANDARD color version
 DC.DDL20.100.PS

BEHIND SURFACES

designed by Federico Delrosso

weave: cotton
 knot: himalayan wool, silk and aloe
 quality: A+ (152.000 knots/sqm approx.)



STANDARD color version
 AC.BEH19.100.SC

CHECK 2

designed by Ludovica + Roberto Palomba

weave: cotton
 knot: himalayan wool
 quality: A (125.000 knots/sqm approx.)



SLEEK (AE-07, AE-12)
 color version
 AC.CHB3.S80.-

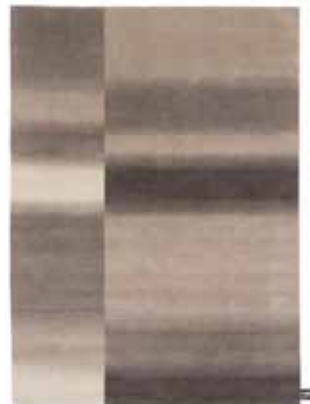


COLD GREY (BM-01, BM-08)
 color version
 AC.CHB19.S80.-

CHECK 3

designed by Ludovica + Roberto Palomba

weave: cotton
 knot: himalayan wool
 quality: A (125.000 knots/sqm approx.)



SLEEK color version
 AC.CHC3.S80.-



COLD GREY color version
 AC.CHC19.S80.-

CASELLARIO MONOCROMO

designed by Also Parisotto + Massimo Formenton

weave: cotton

knot: himalayan wool and silk

quality: A+ (152.000 knots/sqm approx.)



IVORY (A-060) color
version
AC.CMC30.100.-



BRONZE (A-013) color
version
AC.CMC22.100.-



COCO (A-011) color
version
AC.CMC26.100.-



BLACK (BT-01) color
version
AC.CMC19.100.-



ICE (D-064) color version
AC.CMC21.100.-



PETROL (D-117) color
version
AC.CMC17.100.-



TEAL (CE-01) color
version
AC.CMCX.100.-



GOLD (C-006) color
version
AC.CMC25.100.-

COLOSSAL

designed by Baldessari e Baldessari

weave: cotton

knot: himalayan wool

quality: A (125.000 knots/sqm approx.)



STANDARD BLACK (BT-01)
color version
AC.COL19.S80.KC



STANDARD BLACK&WHITE
(BT-01) color version
AC.COL20.S80.KC



LICHENE color version
AC.COLX.S80.KC

CUT OUT MONOCROMO

designed by Aldo Parisotto + Massimo Formenton

weave: cotton

knot: himalayan wool and bamboo silk

quality: B (89.000 knots/sqm approx.)



STANDARD (ED-01) color
version
AC.CMO20.60.-



COCO (A-011) color
version
AC.CMO26.60.-



PETROL (D-117) color
version
AC.CMO17.60.-



ICE (D-064) color
version
AC.CMO21.60.-

TYE 'N DYE

weave: cotton
 knot: himalayan wool
 quality: A (125.000 knots/sqm approx.)



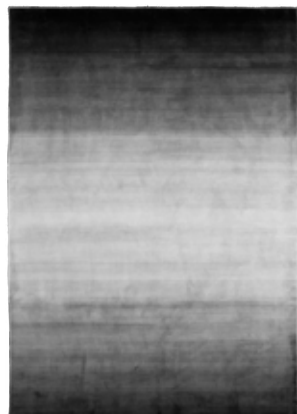
TAUPE (AE) color version
 AC.TYW23.S80.SC



PETROL (CG) color version
 AC.TYW17.S80.-

TYE 'N DYE SOIE

weave: cotton
 knot: silk
 quality: A (125.000 knots/sqm approx.)



GREY (EM) color version
 AC.TYS19.S80.-



NAVY (BC) color version
 AC.TYS15.S80.-

TYE 'N DYE BICOLOR

weave: cotton
 knot: himalayan wool
 quality: A (125.000 knots/sqm approx.)



BLUE/BEIGE (BG, AC) color version
 AC.TWB19.S80.-



RED/INDIGO (AO, BD) color version
 AC.TWB21.S80.-



RUST/IRON (EH, AJ) color version
 AC.TWB20.S80.-

ARBRE DE VIE

weave: cotton
 knot: himalayan wool and silk
 quality: A (125.000 knots/sqm approx.)



BROWN (AB-01 background,
 D-004 design) color
 version
 NC.ADV19.S80.SC



STANDARD (BM-03
 background, D-110 design)
 color version
 NC.ADV20.S80.SC

DOUBLE ARBRE DE VIE

weave: cotton
 knot: himalayan wool and silk
 quality: A (125.000 knots/sqm approx.)



PETROL (CG-04 background,
 D-005, D-048 design) color
 version
 NC.DAV17.S80.-



RED-GOLD (E-013
 background, A-077, A-011
 design) color version
 NC.DAV19.S80.-

FORÊT

weave: cotton
 knot: himalayan wool and silk
 quality: A (125.000 knots/sqm approx.)



STANDARD (AD-10
 background, BT-01 design)
 color version
 NC.FOR19.S80.-

LOTTO

weave: cotton
 knot: himalayan wool, silk and aloe
 quality: A+ (152.000 knots/sqm approx.)



UNDYED color version
 NC.LOT1.100.PS

NÉOCLASSIQUE

weave: cotton

knot: himalayan wool and silk

quality: A (125.000 knots/sqm approx.)



SLEEK color version
NC.NEO3.S80.-



STANDARD color version
NC.NEO19.S80.-

WOODWEDGE

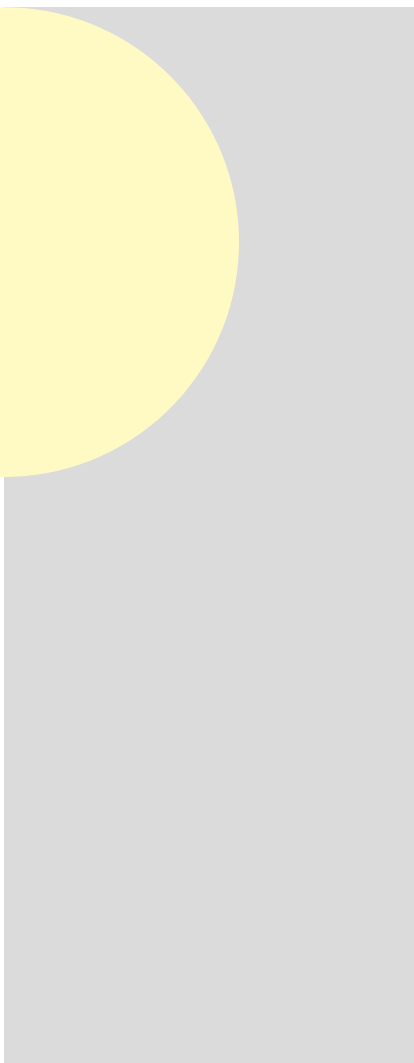
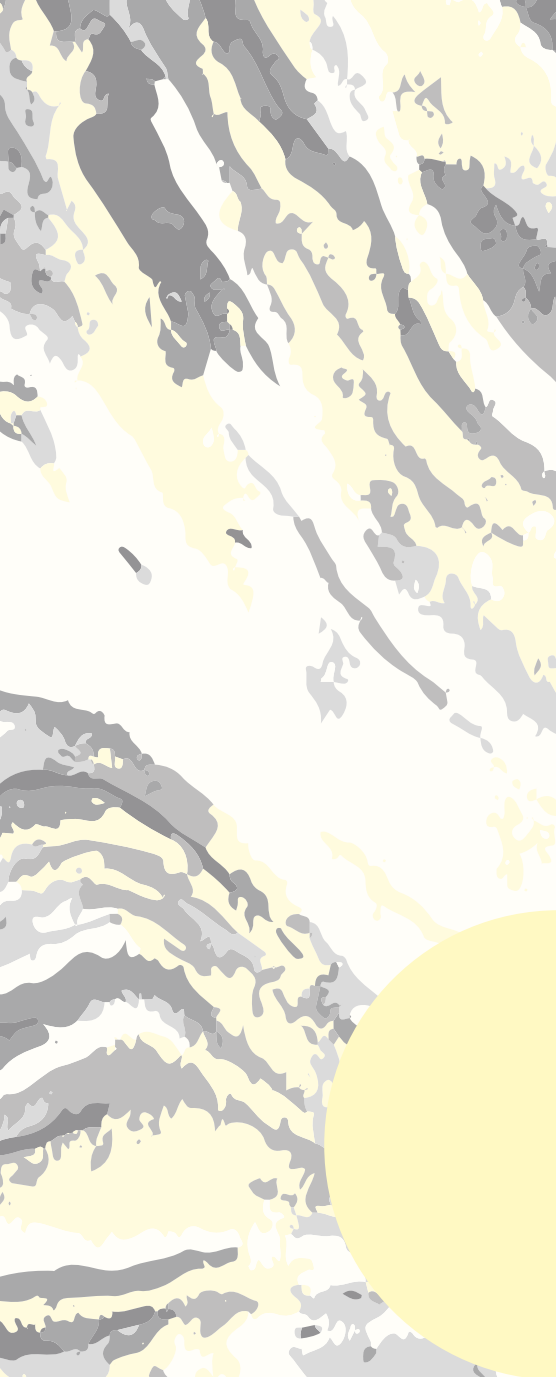
weave: cotton

knot: himalayan wool and silk

quality: A (125.000 knots/sqm approx.)



STANDARD (BG-04
background, AH-12 design)
color version
NC.WDW19.S80.-



COLLABORATIONS



Arflex



Arflex



Arflex



Arflex



Foscarini



Foscarini



Foscarini



Foscarini



Gervasoni



Gervasoni



Giorgetti



Giorgetti



Flou



Flou



Gervasoni



Gervasoni

ARFLEX
 DESALTO
 FLOU
 FOSCARINI
 GERVASONI
 GIORGETTI
 LEMA
 MANERBA
 MERIDIANI
 PEDRALI
 POLIFORM
 TACCHINI
 THONET
 VITRA
 ZANOTTA



Lema



Lema



Lema



Lema



Manerba



Manerba



Meridiani



Meridiani



Poliform



Poliform



Poliform



Poliform



Tacchini



Tacchini



Vitra



Vitra



Meridiani



Meridiani



Tacchini



Tacchini

ARFLEX
 DESALTO
 FLOU
 FOSCARINI
 GERVASONI
 GIORGETTI
 LEMA
 MANERBA
 MERIDIANI
 PEDRALI
 POLIFORM
 TACCHINI
 THONET
 VITRA
 ZANOTTA



Zanotta



Zanotta



Zanotta



Zanotta

OPSTAR
SIGNATURE COLLECTION
designed by Vincenzo Marsiglia



Vincenzo Marsiglia. Dopo-Logica/o
Palazzo Ducale, Sabbioneta

photo by Dario Lasagni

BREAK

SIGNATURE COLLECTION

designed by Vincenzo Marsiglia



photo by Dario Lasagni

Vincenzo Marsiglia. Dopo-Logica/o
Palazzo Ducale, Sabbioneta

cc-tapis®

via San Simpliciano, 6
20121 MILANO I
tel. 0039-0289093884

mail: info@cc-tapis.com
website: www.cc-tapis.com

photography by

.Lorenzo Gironi

art direction and styling by

.Studio MILO & Motel 409

graphic project by

.cc-tapis creative team

special thanks to:

Adele-C
Arflex
Azucena
Bredaquaranta
Daal Gallery
Eponimo
Giorgetti
Hagit - Pincovici
Henry Timi
Martinelli
Meridiani
Mogg
Nahoor
Neon Tecno Lux
Poliform
Poltrona Frau
Riva 1920
Spazio Pontaccio
Spazio 65
Tacchini
Tato
Tuttinstoffa Srl
Zanotta
Zeus

cc-tapis® reserves the rights at all time to apply modifications for the functional or qualitative improvement of its products.
The color and material samples have an indicative value.

printed by:

ANCORA
ARTIGRAFICHE
WWW.ANCORAARTIGRAFICHE.COM
Via Broletto 10/A - 20121 MILANO